

-UNFCCC COP11

Climate Change Kiosk

1st December Montreal

Action to Restore Peatlands for biodiversity and Climate Change

Faizal Parish and Chee Tong Yiew
Global Environment Centre
Yus Rusila Noor
Wetlands International
Liana Bratasida
Ministry of Environment Indonesia
Hans Joosten, *IMCG*
Ed Wiken, *Wildlife Habitat Canada*



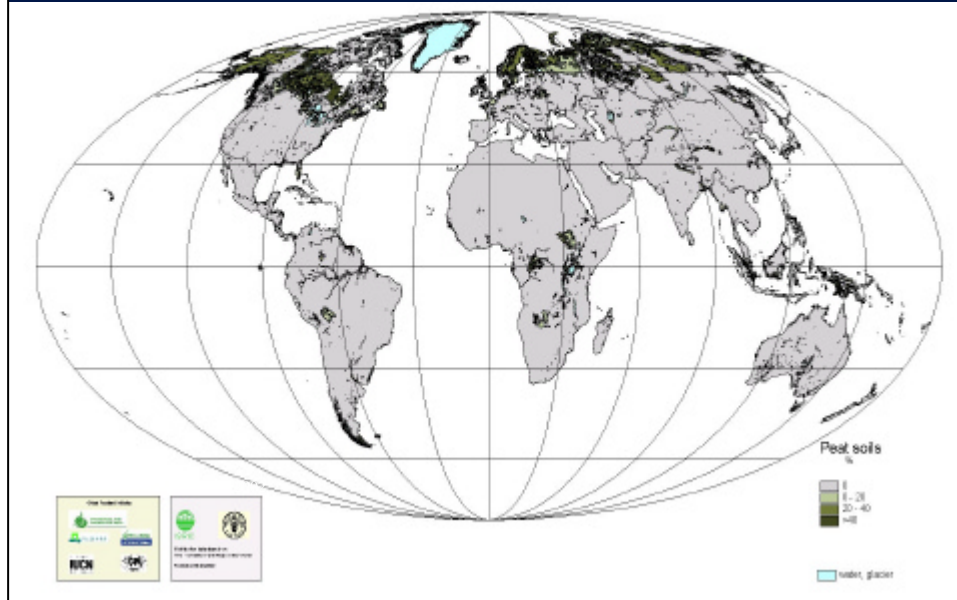
Integrated Management of Peatlands for Biodiversity and Climate Change



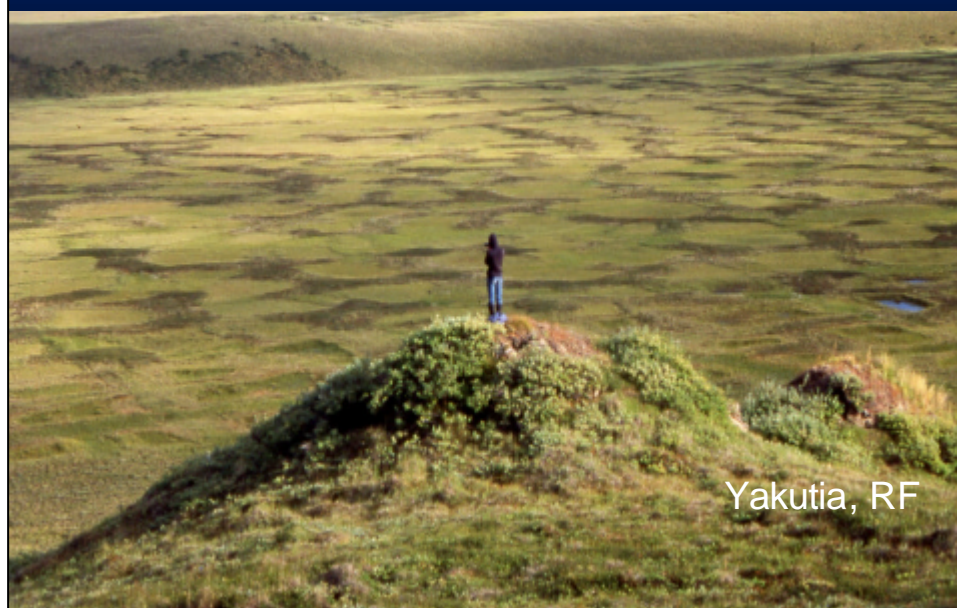
Presentation

- Peatlands
- Peatland Fires and carbon emissions
- Community action ofr restoration in Indonesia
- Regional and international actions

Peatlands are everywhere...



... from the tundra ...



... to the tropics and ...



Borneo

...to the end of the Earth...



Tierra del Fuego
Argentina

... from the mountains ...



... along the rivers ...



... to the sea ...



Values

Key role for :

- carbon storage and sequestration,
- Biological Diversity
- sustainable forestry, non-timber forest products,
- flood control and water supply,
- tourism and recreation
- Livelihood support for local communities

Peatlands have biodiversity



Peatlands are biodiverse



Peatlands support communities



Peatlands store Carbon

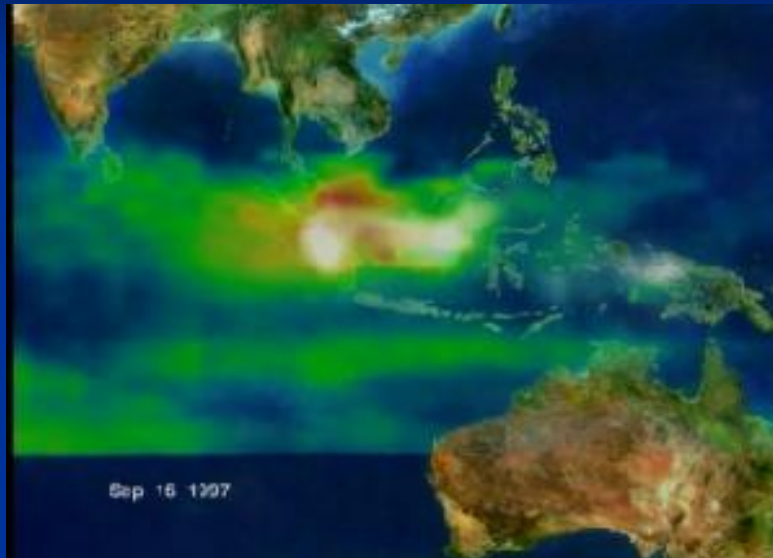
- Estimated 30% of all terrestrial carbon is in peatlands –
 - 550-650 billion tonnes
 - equivalent to 75% of all carbon in the atmosphere.
- 70% of stored carbon in arctic, boreal, temperate regions
- 30% stored in the tropics
- Storage much higher than other ecosystems – eg Indonesian peat may store 5800 tonnes/ha compared to 300-500 for tropical dryland forest.
- Long term carbon store. Peatlands become coal deposits.
- Carbon store vulnerable to loss by drainage and fire.

Peatlands release carbon

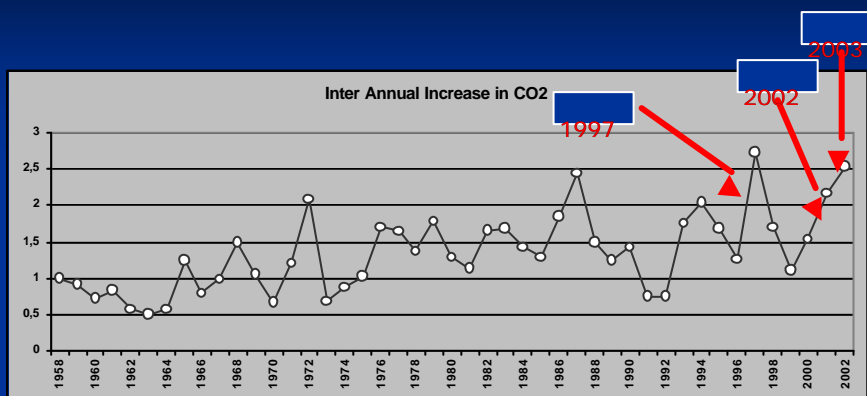


"Smoke from the peatland and forest fires covers much of SE Asia - Sept. 1997

(NASA satellite image)



Sharp CO₂ rise



■ 1997, 2002 and 2003: Largest CO₂ increase since 1957 !

Linkage between Drainage and Fires



South East Asia - Local Impacts



Fire prevention and control

- Establishment of and training for local fire brigades
- Link firefighting with Livelihood support
- Protect restored areas



Alternative Livelihoods

- Non-timber forest products
added-value and marketing
- Agriculture – appropriate species
- Fisheries
- Animal Husbandry



Reducing Fire risk

- Blocking of ditches used to extract illegal logs done by community through incentive system
- Accompanied by re-planting
- On-going monitoring





Thailand – Peat Reforestation

- Manual on Peat Forest replanting, Thailand
- Based on 15 year research programme to restore forest on burnt peatland areas by Thai Government and research groups



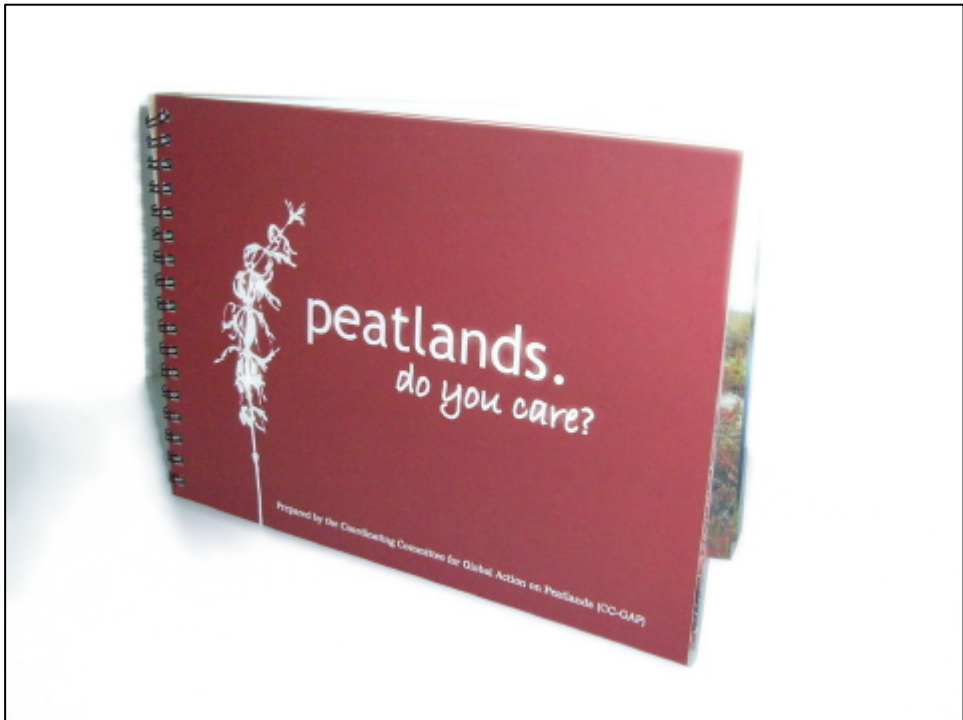
Regional Action – ASEAN Government response

- Multi-stakeholder partnerships established to address peatland management issues in SE Asia
- ASEAN Peatland Management Initiative established by 10 ASEAN countries February 2003
- ASEAN peatland management Strategy endorsed November 2005
- National Action Plans in preparation
- Funds being raised to support action US\$ 20 million target for 2006-2010

Action in other regions

- Paramos Group, Andes
- Central Asia Mountain peatland project
- Southern Africa peatland programme
- Russia peatland programme
- Central Europe Peatland Action Plan
- Ramsar Coordinating Committee on Global Action on peatlands





Please help!

- Give more recognition to peatlands under UNFCCC
- Include peatlands in national mitigation and adaptation plans
- Incorporate peat issues into initiative on deforestation
- Make peatland management a key point of the post 2012 regime
- Joint action with CBD and Ramsar convention
- Enhance assessment and monitoring of peatlands
- Support activities by governments, NGOs and local communities to address peatland management issues
- Provide resources for action.

Thank you

A photograph of a dirt road leading towards a sunset over a field. The sun is low on the horizon, casting a warm glow over the scene. The sky is filled with soft, golden light and some clouds. The road is dark and leads the eye towards the horizon.