



GLOBAL ENVIRONMENT FACILITY
INVESTING IN OUR PLANET

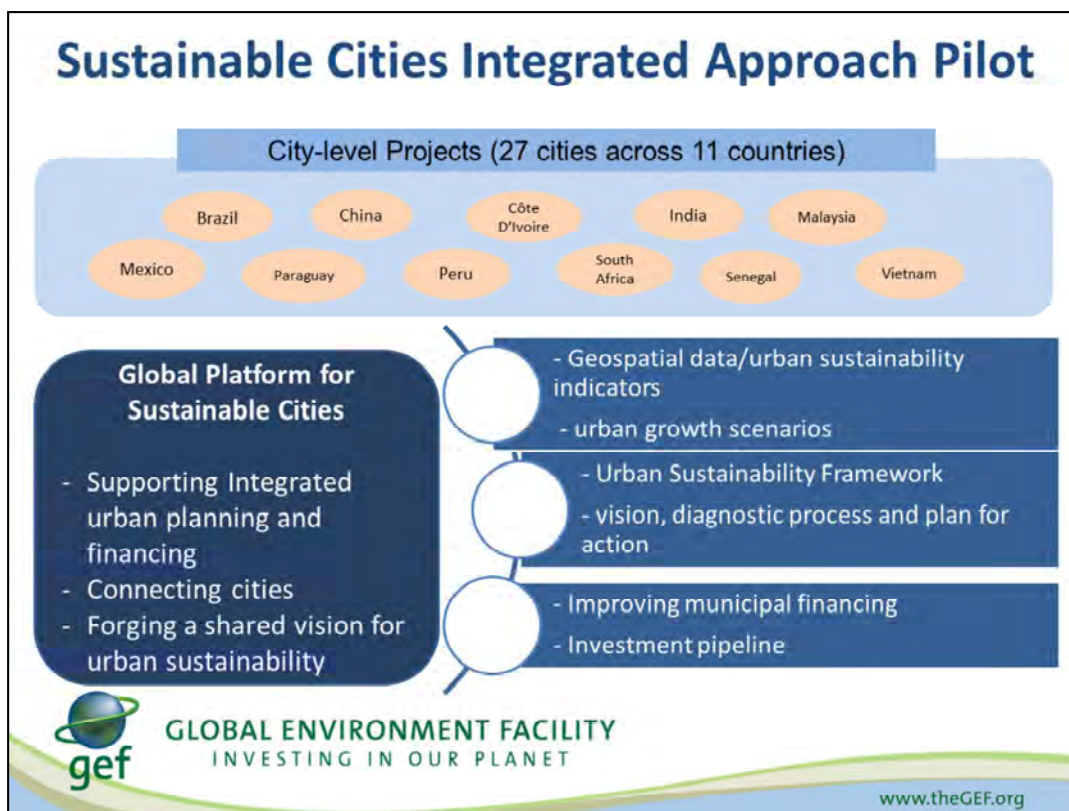
www.theGEF.org

Partnerships for Sustainable Cities

- The GEF experiences -

Bonn, 11 May 2017

Masako Ogawa
Global Environment Facility



The Sustainable Cities Integrated Approach Pilot represents a timely and robust response to addressing three mega-trends that drive global environmental degradation: urbanization, a rising middle class, and population growth.

Cities are a natural place for integrated solutions for ecosystem management.

Working with partners, the GEF seeks to promote sustainable urban development through better integrated models of urban design, planning, and implementation.

The program is organized around two major priorities:

- (i) to help participating cities promote an integrated approach through actual investment of their priority; and
- (ii) to create a global platform for knowledge sharing among cities, primarily focusing on participating cities, but others as well.

27 cities across 11 countries.

This framework will ensure that participating cities can harness state of the art thinking/methods of integrated urban planning, and at the same time share their experiences globally through networks of mayors and city experts.

This knowledge sharing platform is therefore a unique feature of the program with huge potential of scaling-up of transformation.

Participating Cities

Participating Cities

Total GEF Program Financing: \$150m
Total Co-Financing: \$1.5 bn

Mexico GEF Funding: \$15m; Co-Financing: \$110m
 Toluca
 La Paz
 Campeche

Brazil GEF Funding: \$7.5m; Co-Financing: \$193m
 Recife
 Brasilia

Peru GEF Funding: \$6.3m; Co-Financing: \$183m
 Lima

Paraguay GEF Funding: \$7.4m; Co-Financing: \$241m
 Asuncion

India GEF Funding: \$13.5m; Co-Financing: \$80.100m
 Mysore
 Buntur
 Vijayawada
 Bhopal
 Jaipur

Senegal GEF Funding: \$8.7m; Co-Financing: \$51m
 Greater Dakar
 Saint Louis

Cote D'Ivoire GEF Funding: \$8m; Co-Financing: \$21.3m
 Abidjan
 San Pedro
 Bouake

GEF Funding: \$8m; Co-Financing: \$118m **South Africa**
 Johannesburg

GEF Funding: \$36m **China**
 Beijing
 Nanjing
 Shijiazhuang
 Tianjin
 Guiyang
 Shenzhen
 Ningbo

GEF Funding: \$12.7m; Co-Financing: \$170m **Viet Nam**
 Hue - Da Nang Corridor

GEF Funding: \$2.7m; Co-Financing: \$16m **Malaysia**
 Malaka City



GLOBAL ENVIRONMENT FACILITY
 INVESTING IN OUR PLANET

www.theGEF.org



This knowledge sharing platform is therefore a unique feature of the program with huge potential of scaling-up of transformation.

The IAP program development is a process of intensive outreach to and consultation with a wide range of stakeholders. In addition to GEF agencies and countries, the IAP team has developed strong relationships with ICLEI, C-40, WRI, WCCD, UN-Habitat, Rockefeller Foundation, Philips Lighting, Siemens Infrastructure and Cities, and others.

Cities interested in participating in the program and accessing GEF support under the IAP Cities program would first access the platform to receive the following services and support:

Access to the knowledge continuously accumulated by the GPSC on sustainable urban development – this would include tools, training materials, knowledge products and lessons of implementation from cities that have implemented investment and policy programs under the auspices of the GPSC

Advice on the preparation of GEF city proposals, beginning with a strong focus on integrated sustainable city planning

Access to practical lessons of experience from earlier cities supported by the GPSC in the implementation of sustainable sectoral programs embedded in an integrated sustainable plan for the city

Identification of cities with relevant experience in the specific areas of interest

of the proponent city, and initial exchanges for city-to-city advice in the preparation of the proponent city proposal to GEF funds (or other sources of financing linked to the GPSC)

Access to global knowledge by various networks and institutions in areas related to urban sustainability and sectors of interest to the proponent city

Invitation to periodic workshops and training sessions organized by the GPSC in the areas of interest of the proponent city.

GPSC- Connecting Cities to Promote Urban Sustainability

Planning Cities

Spatial
Data

Indicators

Integrated
Planning

Financing Cities

Municipal
Financing

Investment
Options

Project
Preparation

Connecting Cities

City to city
learning

Partnership
with networks

Connecting
financial
institutions



GLOBAL ENVIRONMENT FACILITY
INVESTING IN OUR PLANET

www.theGEF.org

Thank you!

The Global Environment Facility

1818 H Street, NW, Mail Stop N8-800, Washington, DC 20433 USA
www.thegef.org / secretariat@thegef.org



GLOBAL ENVIRONMENT FACILITY
INVESTING IN OUR PLANET

www.theGEF.org