

 @ClimateMundial



**ClimateMundial**

Paris Climate Bond Concept  
SB44 In-Session Workshop on financing the CDM – Bonn, 16 May 2016

Email: [info@climatemundial.com](mailto:info@climatemundial.com)

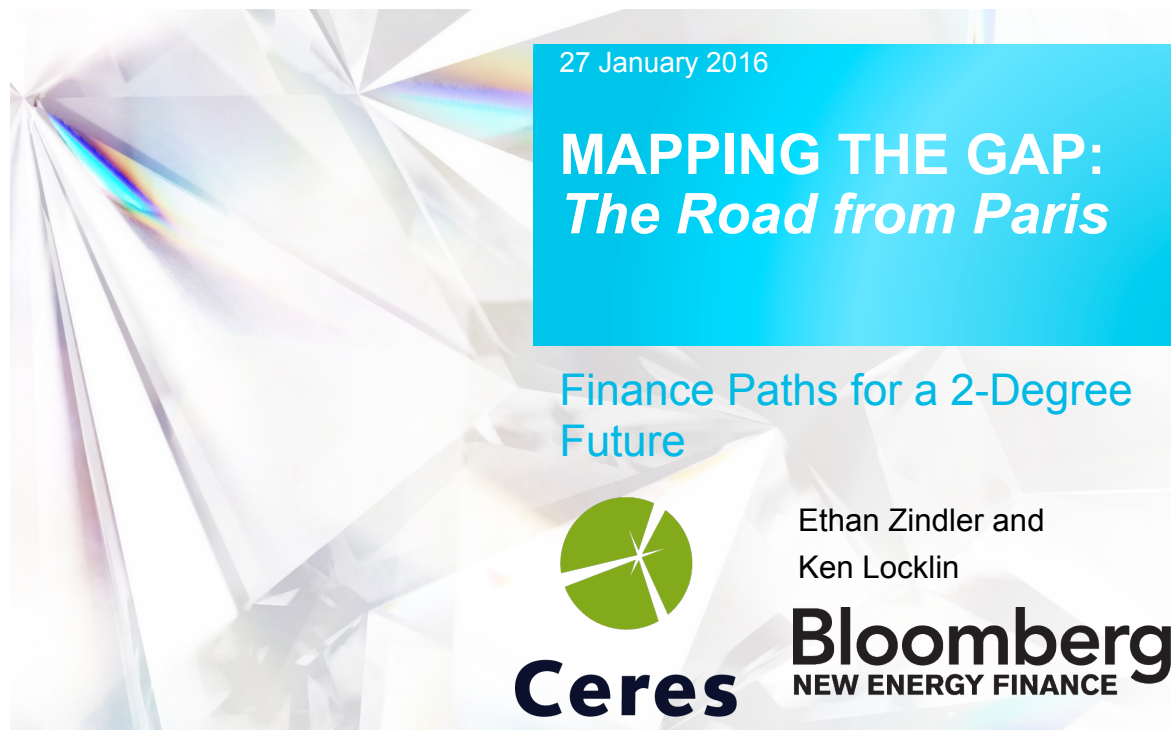
Website: [www.climatemundial.com](http://www.climatemundial.com)

# Typical Project Finance

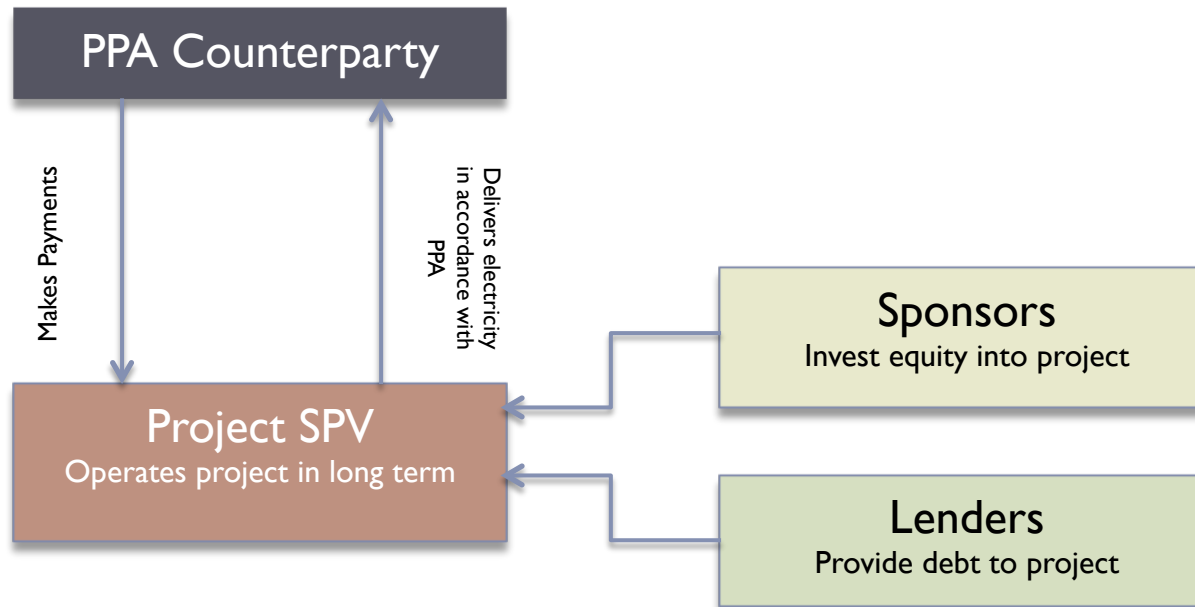
---

2 Degree pathway – implications for renewable energy:

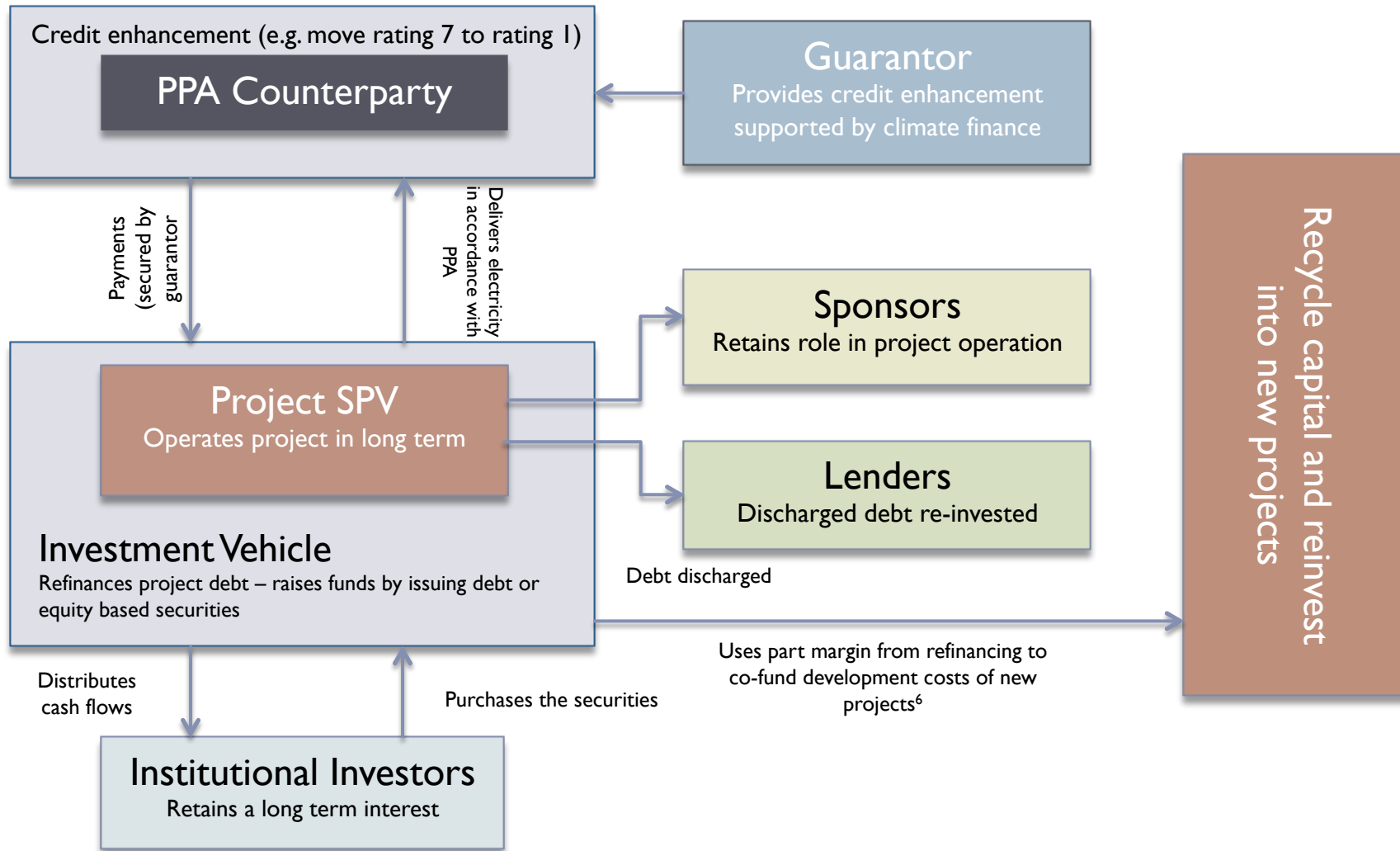
- Innovation in how renewable energy is financed & refinanced in emerging markets
- Greater involvement of major pension funds through direct investment
- Likely innovation in aggregation to form asset-backed and project-back securities



# Typical Project Finance



# Paris Climate Bond Concept



 @ClimateMundial



**ClimateMundial**

Paris Climate Bond Concept  
SB44 In-Session Workshop on financing the CDM – Bonn, 16 May 2016

Email: [info@climatemundial.com](mailto:info@climatemundial.com)

Website: [www.climatemundial.com](http://www.climatemundial.com)