

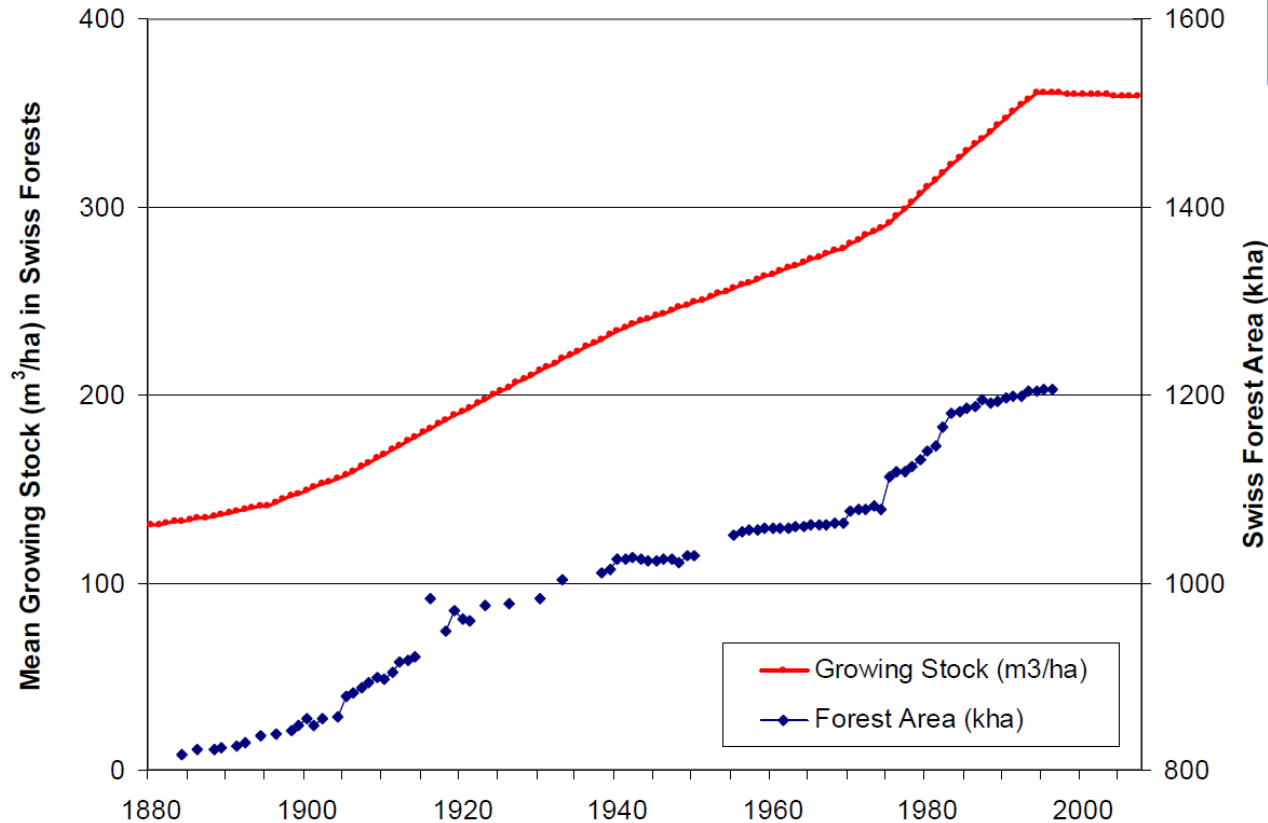


Switzerland



Swiss Forest Act - 1876

- Prescribes sust. FM
- Prohibits clearing
- Bans Deforestation



High C Stocks 360 m³/ha

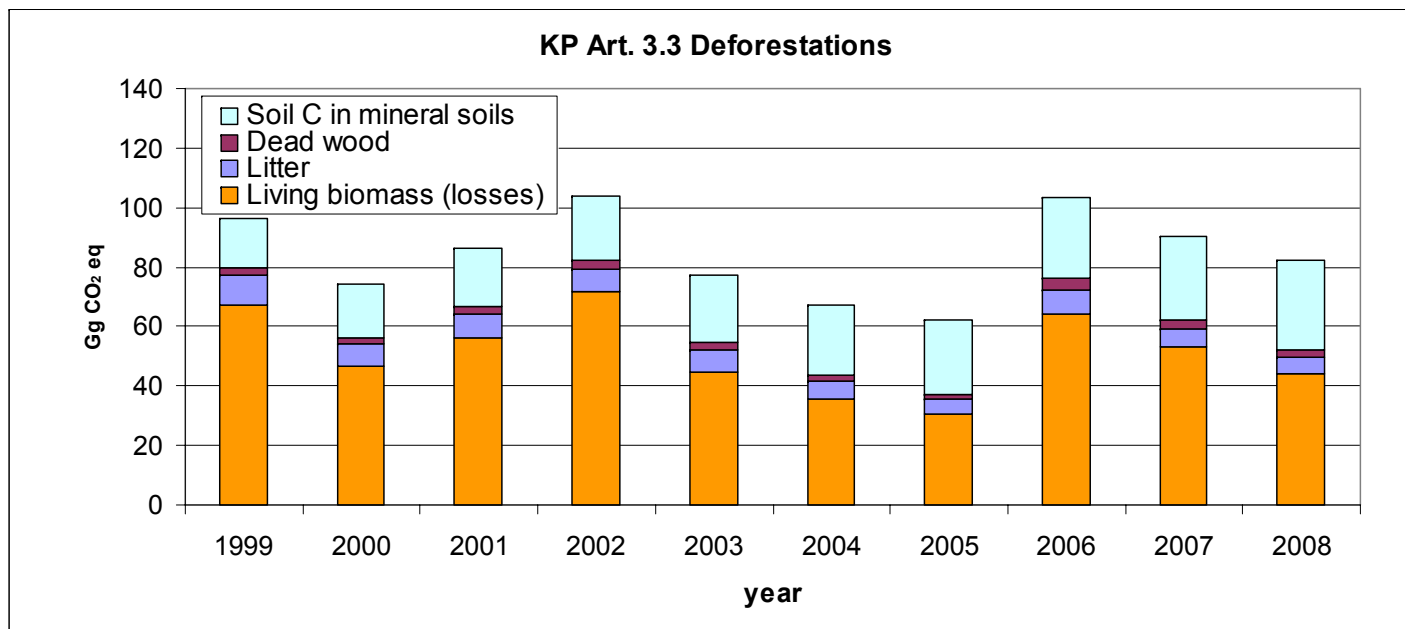
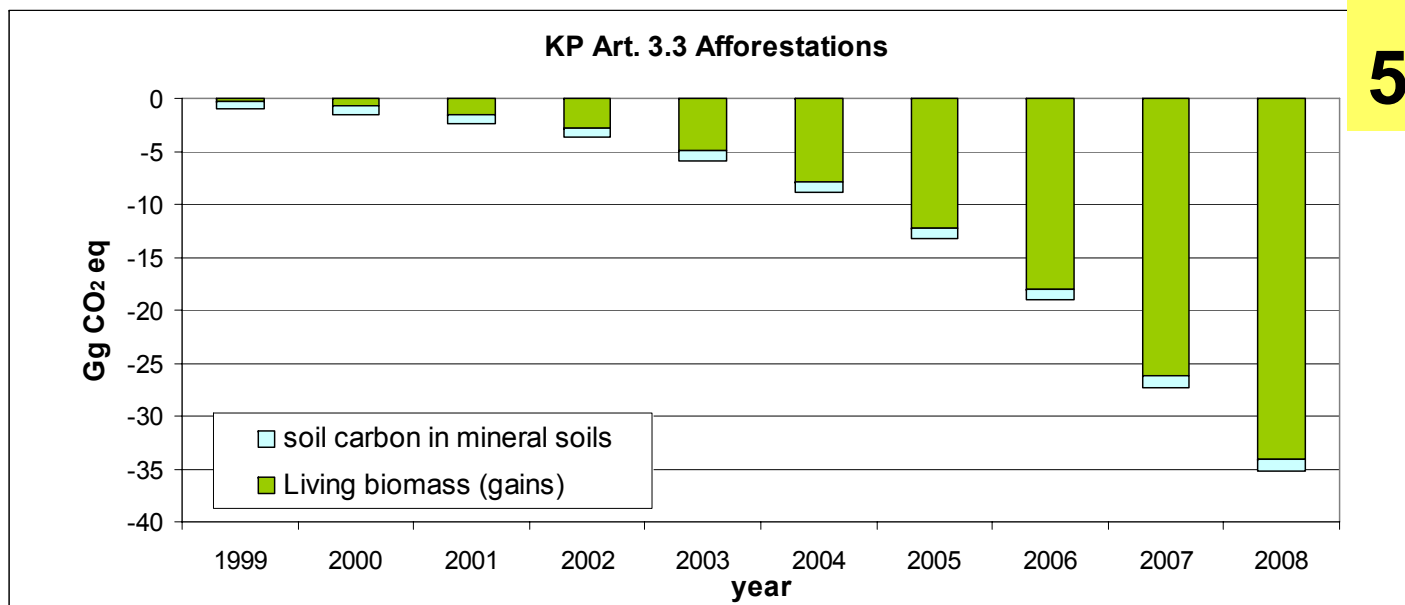
High risks -> Adaptation

- Mitigate emissions nat. disturb.
- Secure wood supply

LULUCF - Data Swiss NIR

1990 excl. LULUCF

52 954 Gg CO₂



LULUCF-Data Swiss NIR

1990 excl. LULUCF

52 954 Gg CO₂

- 1 212 kha FM Area
- 0.01 Gg CH₄ + 0.01 Gg N₂O
- Data source: NFI
- Time series

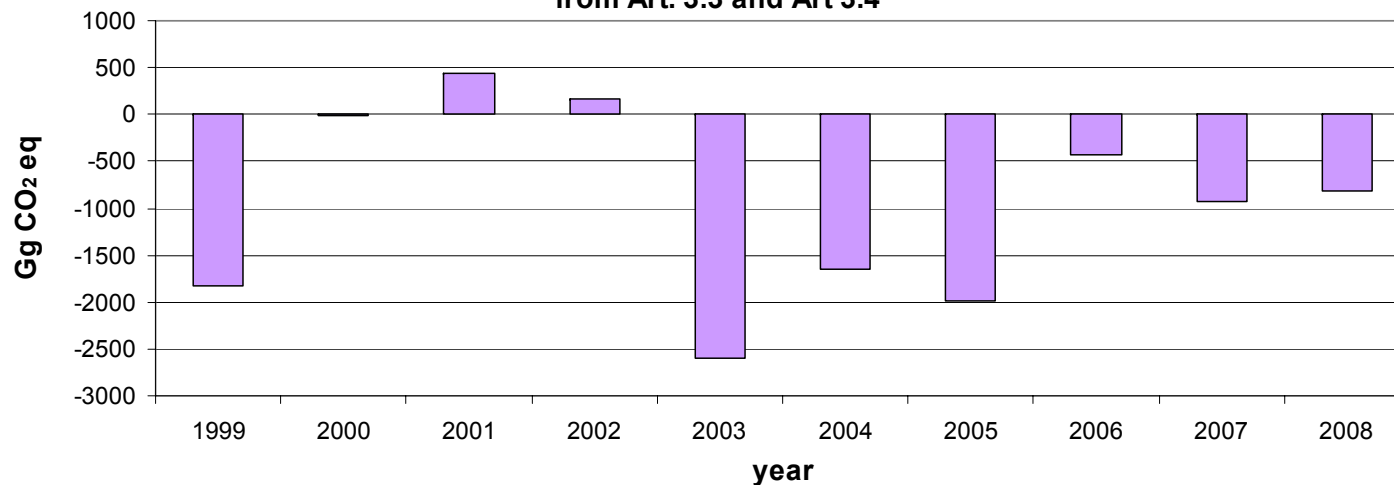
LULUCF 1990-2008

KP 1999-2008

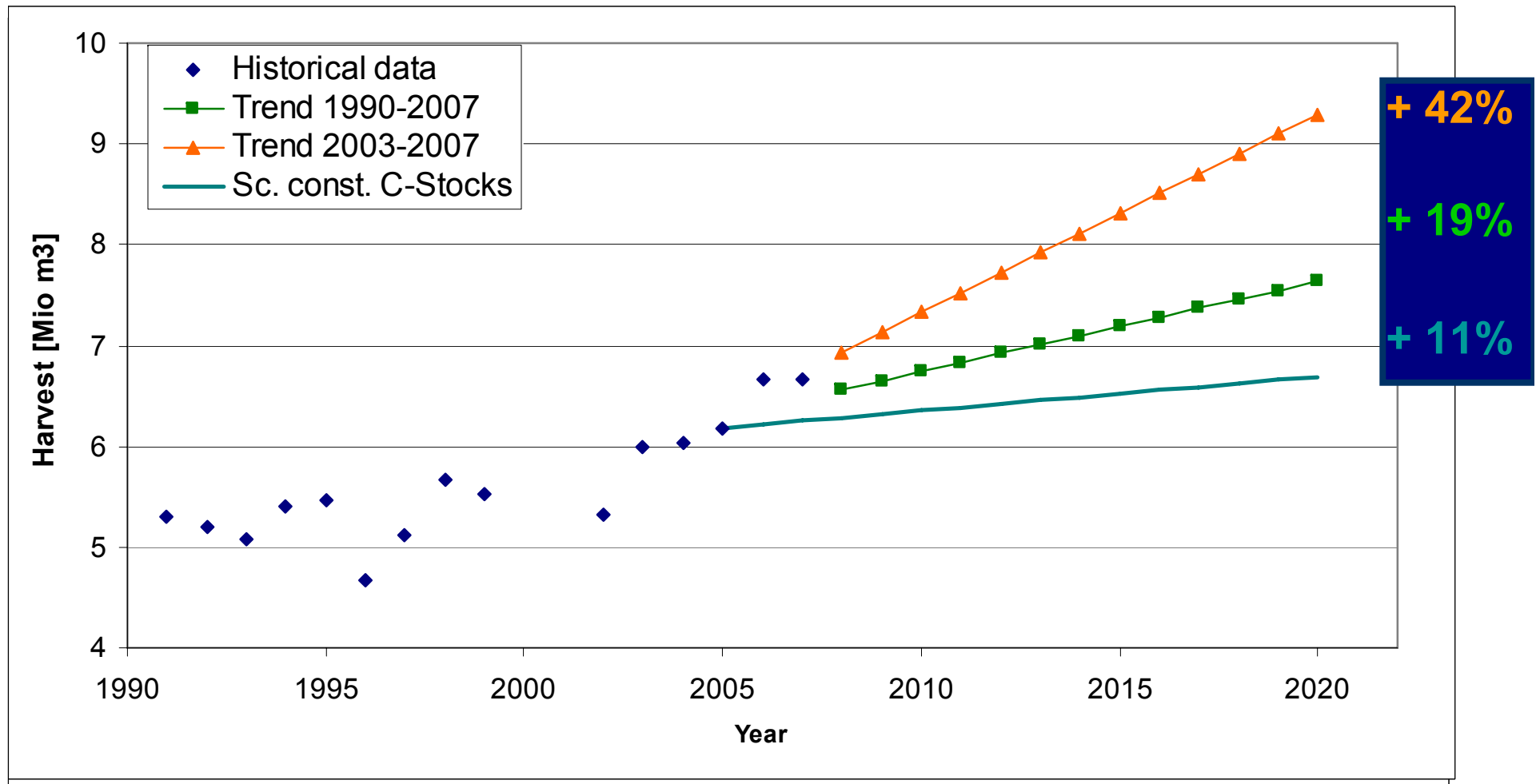
Gg CO₂ eq



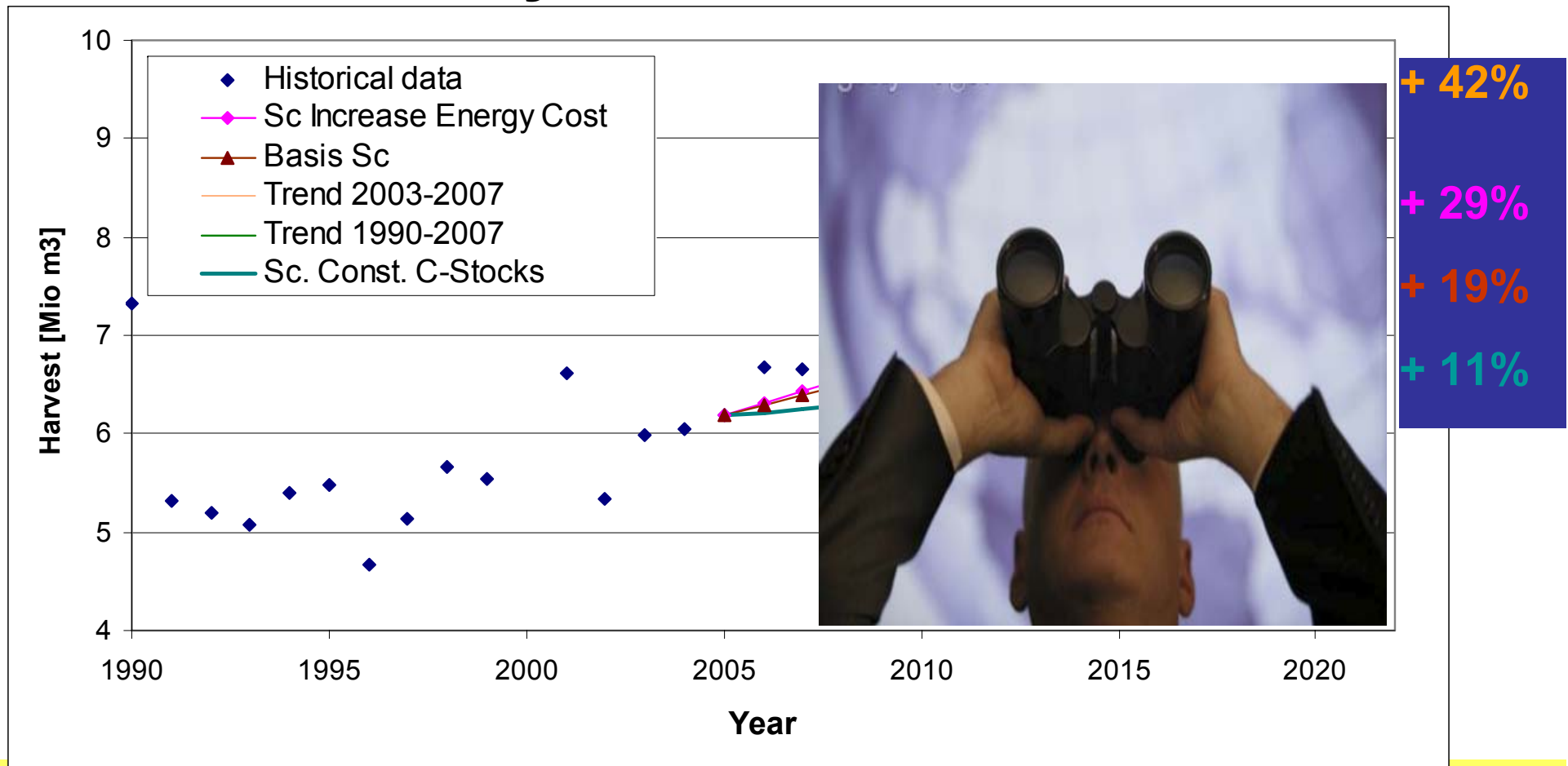
Net CO₂ eq emissions / removals
from Art. 3.3 and Art 3.4



Future Harvesting rates Trend Historical Data



Future Harvesting rates **Swiss Policy - scientific studies**



**Wood Resource Policy – „Potential Sustainable Wood Supply“
 ecologically & economically effective use +25%**

Dynamical Wood Market Model (Pauli et al. 2009) +19-29%

Swiss Forward Looking Baseline

MASSIMO Modell

- Empirical stochastic model; 3 NFI
- Ind. tree-based forest growth model
- Harvesting rates (BAU +19%) & Growth
 - Age class structure, Stand growth, stand structure, Ingrowth rates, Regeneration Techniques
- Mortality rate
 - ~ constant; from period without storms
- Natural Disturbances
 - Storms not included; e.g. Lothar 1999: 23.8 Mt CO₂



Preliminary results

Swiss FLB 2013-2020	[+0.4 to +0.9 Mt CO ₂]
LULUCF contribution	removals [0.8 to 1.7%] of 1990 emissions
Cap FM 3% AAU	[0.5 to 0.8 Mt CO ₂] 20% to 30% reduct.



Switzerland