

Projections of Emissions/Reductions of Forest Management in Japan

FOREST CARBON SINK STRATEGY OFFICE, FORESTRY AGENCY



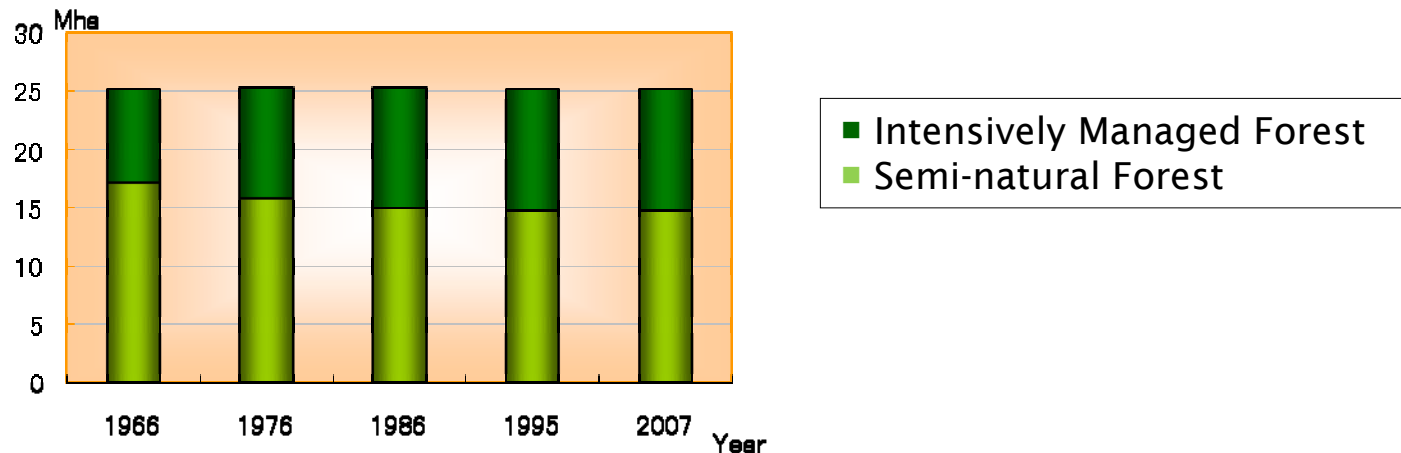
Forestry Agency, Japan

Nov 5, 2009

Overview of Forest Land in Japan

- High forest cover ratio; land use change is comparatively rare
 - ◆ Forest area: 25.1million ha → 67% of total land area
 - ◆ Total land use change between Forest Land and Non-Forest Land is less than 0.2Mha during last 40 years

■ Forest Area



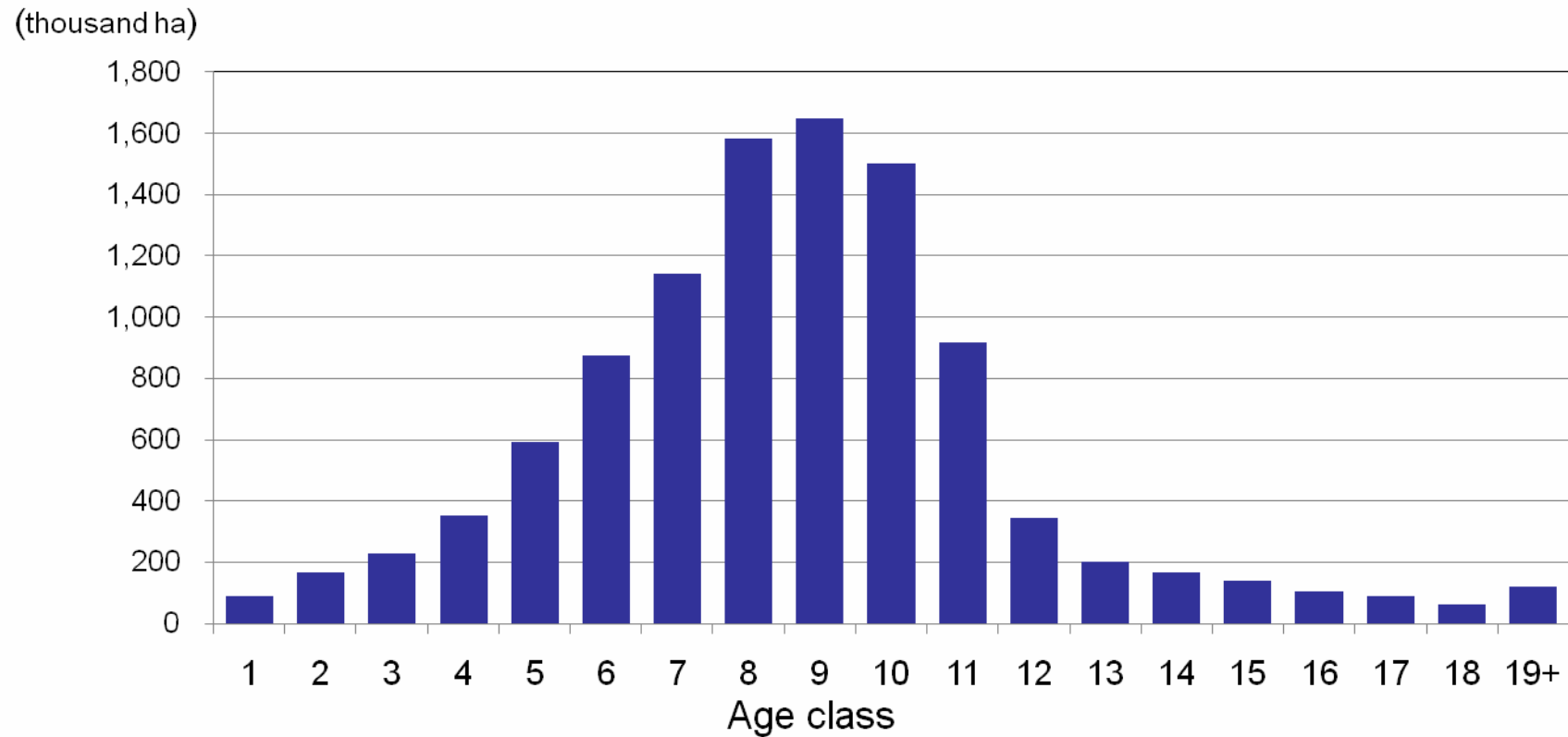
- Considerable parts of forests have been planted since 1950s (10Mha) and classified into Intensively Managed Forest

FOREST C ■ 80% of Intensively Managed Forest area requires adequate care (tending, weeding, thinning etc.)



Age-Class Structure of Japan

- Age class structure of intensively-managed forest in 2007



(Note: 1 Age class = 5 years)

FOREST CARBON SINK STRATEGY OFFICE, FORESTRY AGENCY



The historical data and preliminary projections of net CO2 emissions/removals on each accounting option of “Forest Management”

(Mt CO2)

Year	Base Year Total GHG emissions under the Kyoto Protocol	Net CO2 emissions/removals from forest land under the UNFCCC	Net CO2 emissions/removals on each accounting option of “forest management”				
			Gross-net with cap	Gross-net (no cap)	Gross-net (Discount rate(85%))	Net-net (Base year 1990)	Reference Level (Bar)
1990	1,261 (base year)	81					
2007	(Percent of BY Total GHG emissions under KP)	83	42	42	12	2	42
			3.3%	3.3%	1.0%	0.2%	3.3%
2020	(Percent of BY Total GHG emissions under KP)	~62	~37	~37	~9	~△19	~37
			(~ 2.9%)	(~ 2.9%)	(~ 0.7%)	(~ △1.5%)	(~2.9%)

Note: Positive sign = Removal, Negative sign(△) = Emission

FOREST CARBON SINK STRATEGY OFFICE, FORESTRY AGENCY

On each option, Net emissions/removals will decrease toward 2020 because Japan’s forest is in the maturing stage.

The historical data and preliminary projections of net CO2 emissions/removals on each accounting option of “Forest Management” (Assumption)

- Gross-net with cap
 - “Narrow approach” will be used as the 1 CP.
 - The cap under the 1CP applied. For Japan:13 Mt C (=47.67Mt CO2)/year.
- Gross-net without cap
 - “narrow approach” will be used as the 1 CP.
- Gross-net (discount rate)
 - 85% discount rate to emissions/ removals from all forests under Gross-net.
- Net-net
 - The base year :1990
 - Emissions and removals: all forests.
- Reference level
 - The reference level = 0

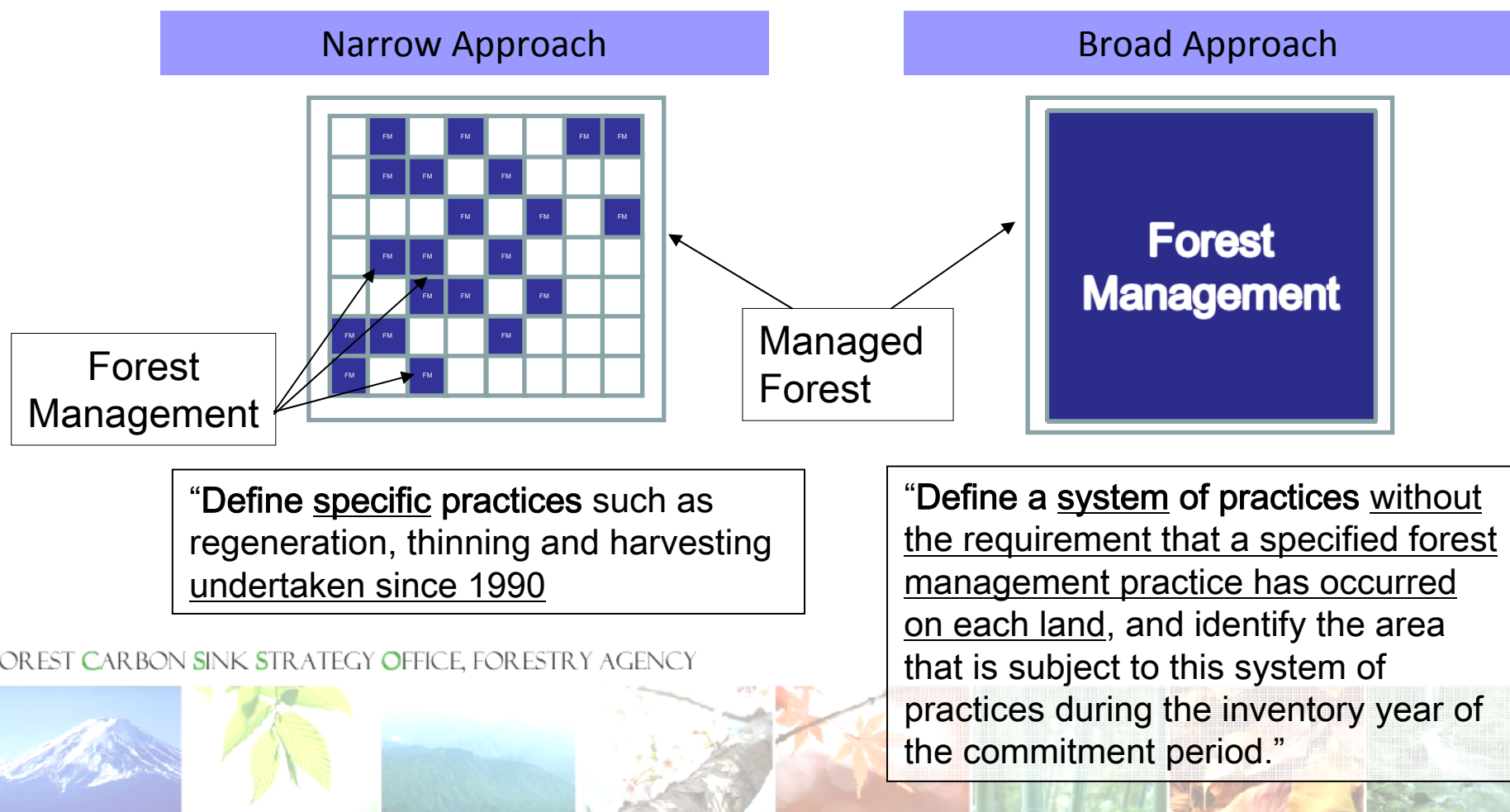


What is Narrow Approach?

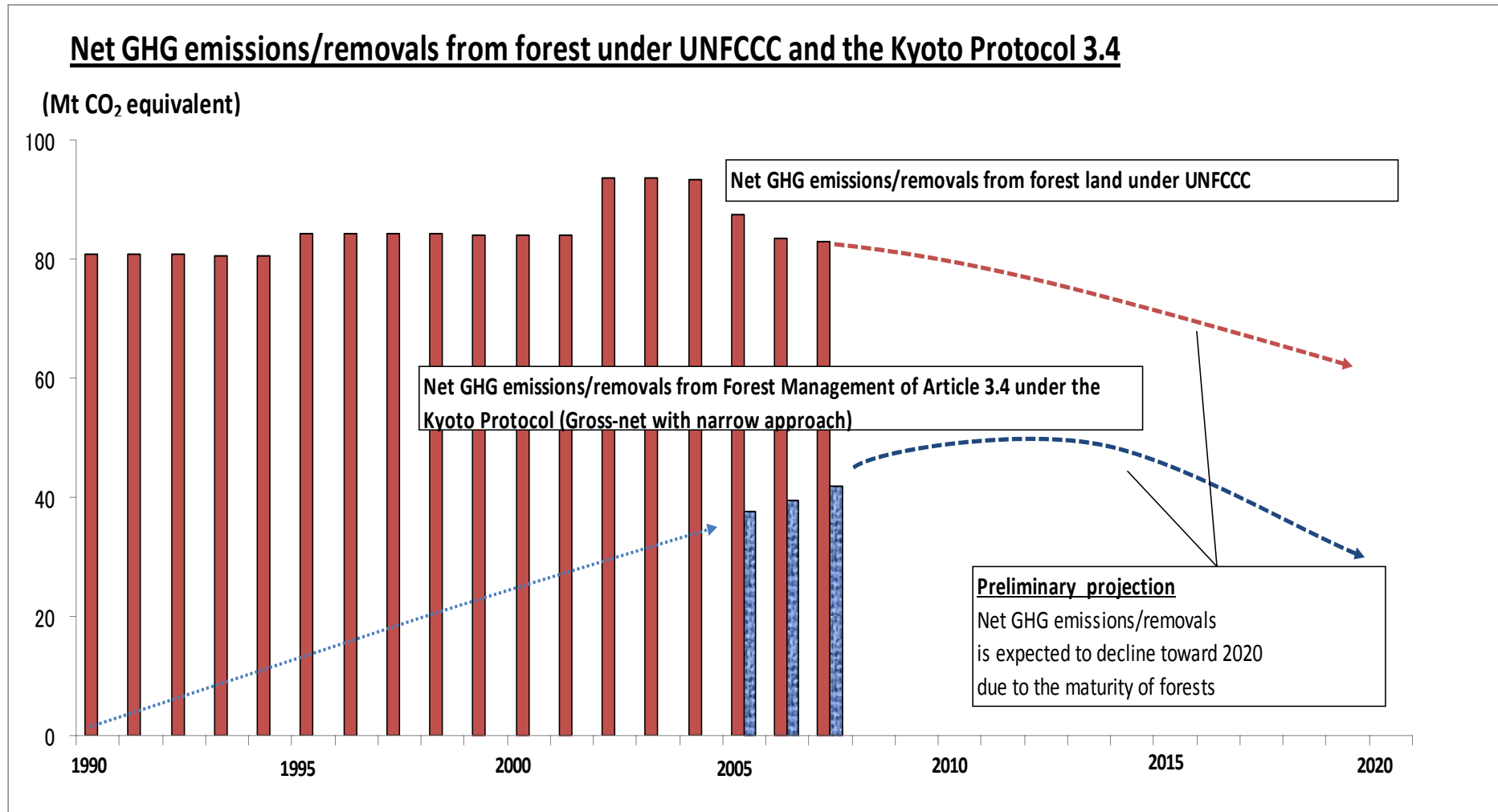
– Narrow Approach and Broad Approach –

- GPG-LULUCF presents two different approaches on the identification of areas subject to forest management:

- Narrow Approach & Broad Approach (GPG-LULUCF 4.2.7.1)



Historical Data and Preliminary Projections (MF/FM)



FOREST CARBON SINK STRATEGY OFFICE, FORESTRY AGENCY

Note: Positive sign = Removal, Negative sign = Emission

