



## Summary of GHG Emissions for Romania

Base year (Convention) = 1989

	Emissions, in Gg CO <sub>2</sub> equivalent		
	1989	2000	2012
CO <sub>2</sub> emissions without LULUCF	207,007.5	92,856.9	83,860.6
CO <sub>2</sub> net emissions/removals by LULUCF	-15,292.3	-25,691.7	-20,570.6
CO <sub>2</sub> net emissions/removals with LULUCF	191,715.2	67,165.2	63,289.9
GHG emissions without LULUCF	285,072.6	134,098.6	118,789.0
GHG net emissions/removals by LULUCF	-15,264.0	-25,649.5	-20,516.2
GHG net emissions/removals with LULUCF	269,808.6	108,449.1	98,272.8

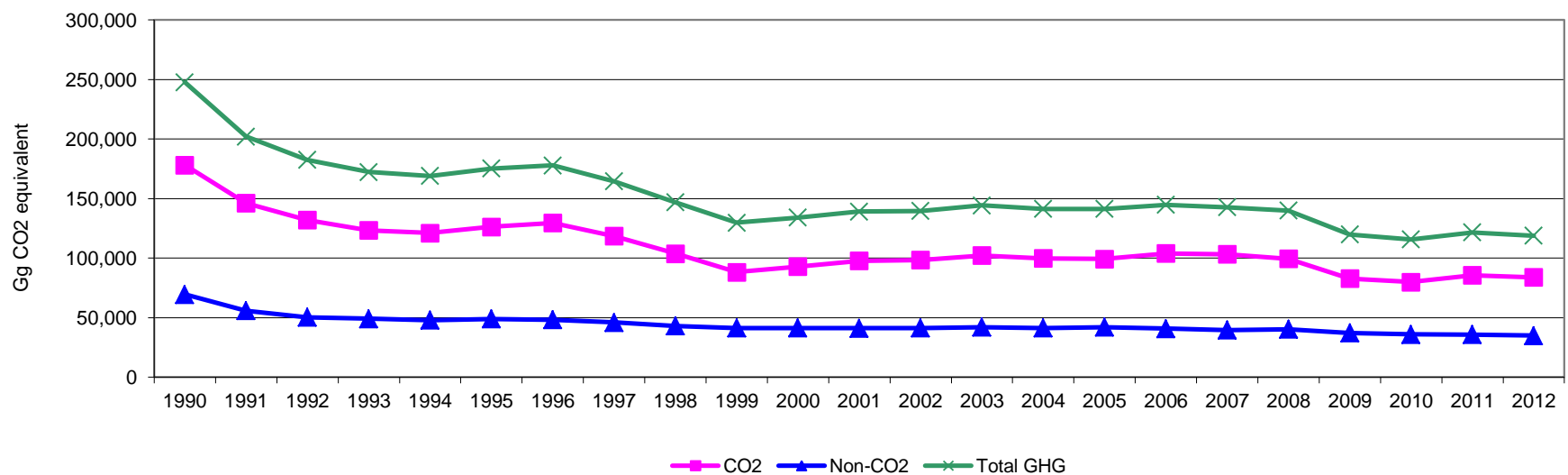
	Changes in emissions, in per cent		
	From 1989 to 2000	From 2000 to 2012	From 1989 to 2012
CO <sub>2</sub> emissions without LULUCF	-55.1	-9.7	-59.5
CO <sub>2</sub> net emissions/removals by LULUCF	68.0	-19.9	34.5
CO <sub>2</sub> net emissions/removals with LULUCF	-65.0	-5.8	-67.0
GHG emissions without LULUCF	-53.0	-11.4	-58.3
GHG net emissions/removals by LULUCF	68.0	-20.0	34.4
GHG net emissions/removals with LULUCF	-59.8	-9.4	-63.6

	Average annual growth rates, in per cent per year		
	From 1989 to 2000	From 2000 to 2012	From 1989 to 2012
CO <sub>2</sub> emissions without LULUCF	-7.0	-0.8	-3.9
CO <sub>2</sub> net emissions/removals by LULUCF	4.8	-1.8	1.3
CO <sub>2</sub> net emissions/removals with LULUCF	-9.1	-0.5	-4.7
GHG emissions without LULUCF	-6.6	-1.0	-3.7
GHG net emissions/removals by LULUCF	4.8	-1.8	1.3
GHG net emissions/removals with LULUCF	-8.0	-0.8	-4.3

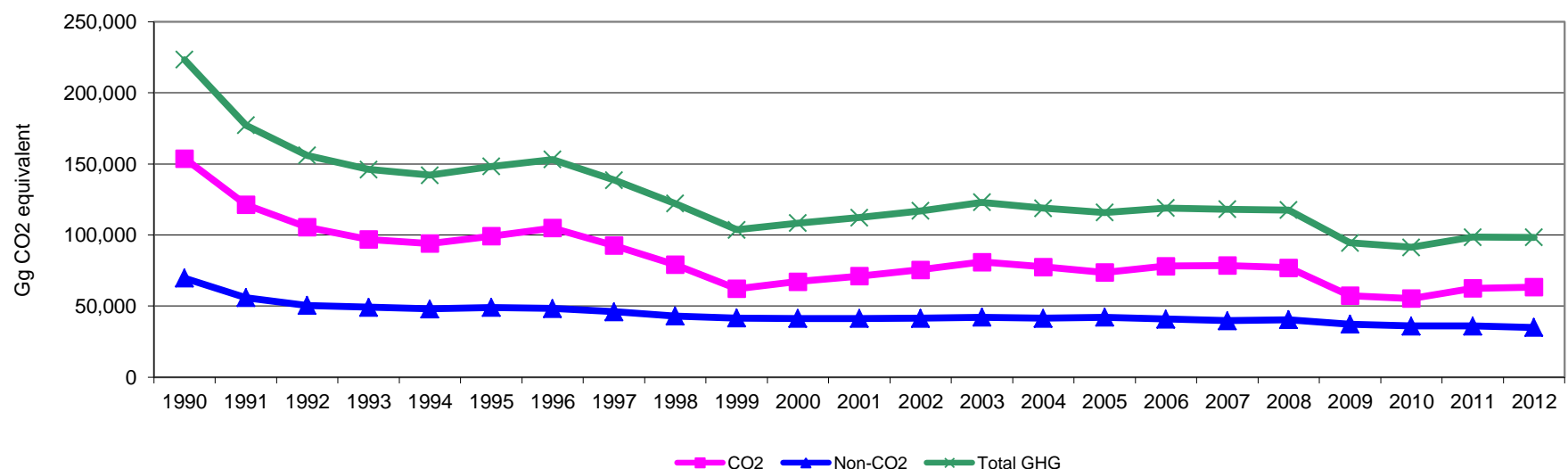
The base year under the Climate Change Convention is 1990 except for Bulgaria (1988), Hungary (average of 1985 to 1987), Poland (1988), Romania (1989) and Slovenia (1986), as defined by decisions 9/CP.2 and 11/CP.4.

### Total GHG emissions, without and with LULUCF

#### GHG emissions (without LULUCF)

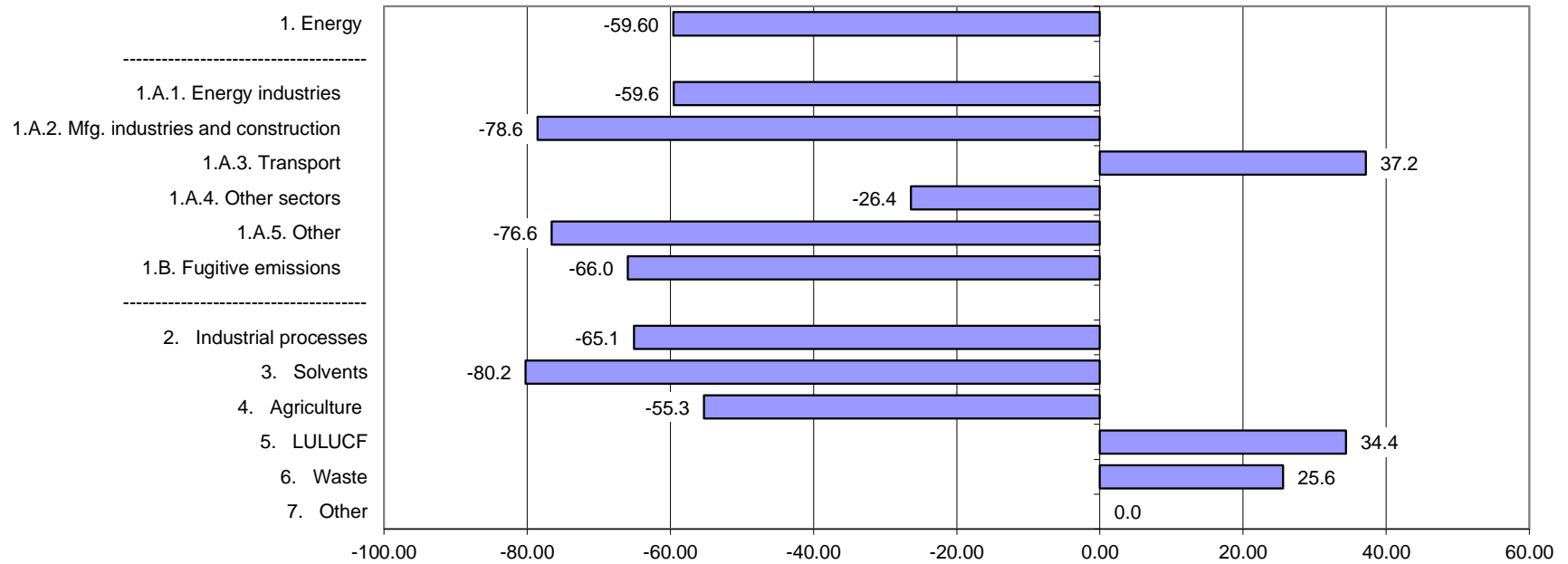


#### GHG emissions (with LULUCF)



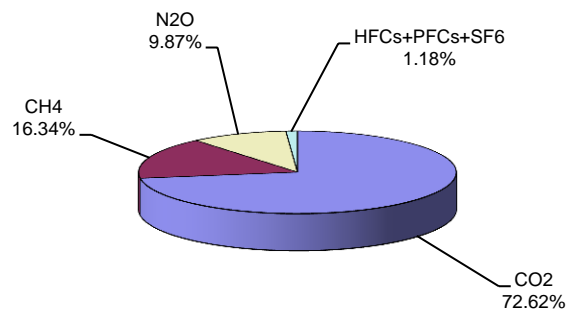


Change in GHG emissions/removals from 1989 to 2012, %

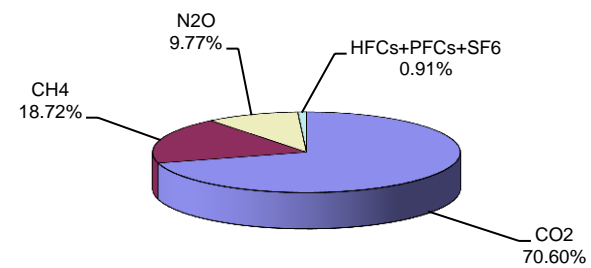


GHG emissions by gas

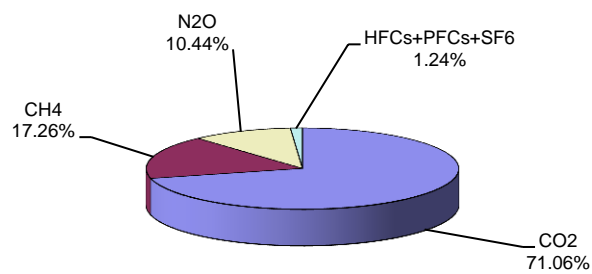
1989 (without LULUCF)



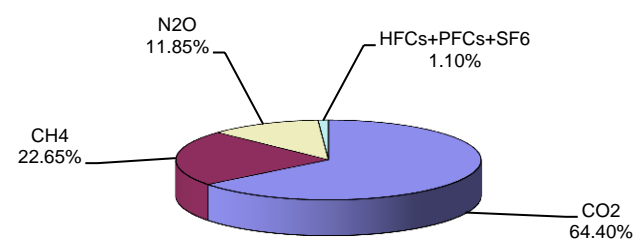
2012 (without LULUCF)



1989 (with LULUCF)

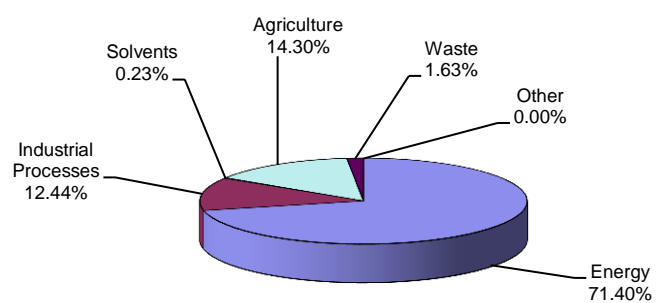


2012 (with LULUCF)

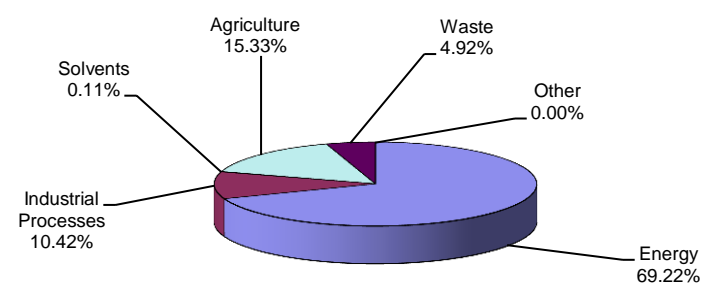


GHG emissions by sector (without LULUCF)

1989

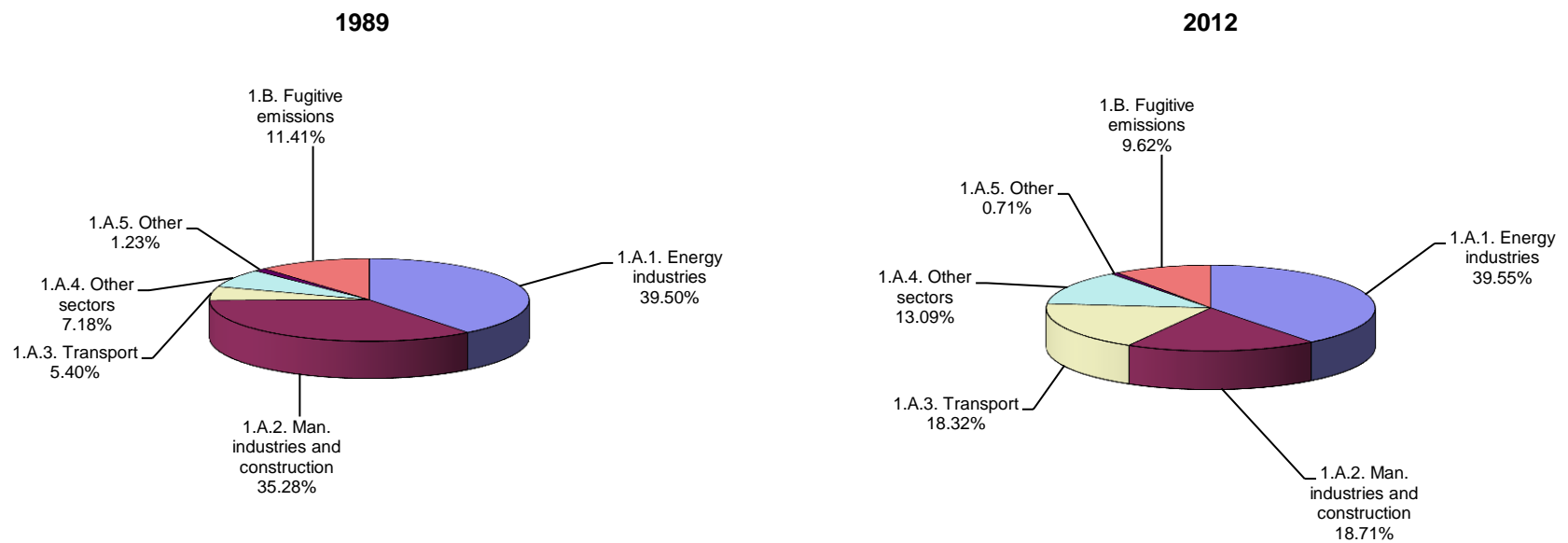


2012

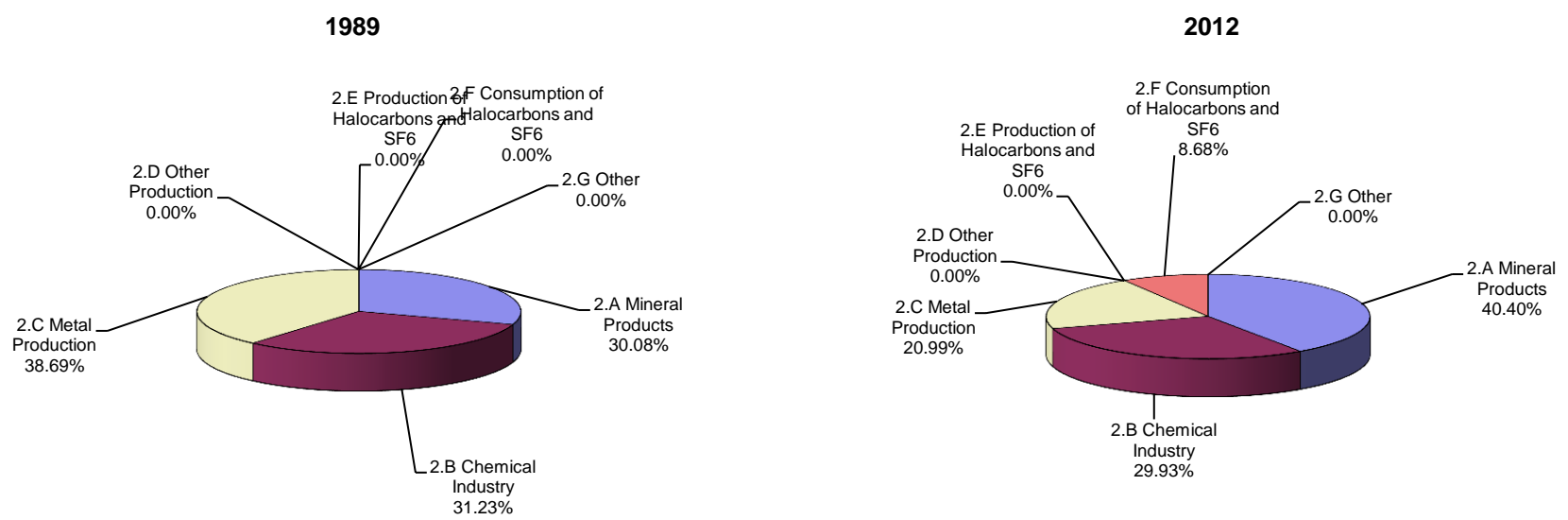




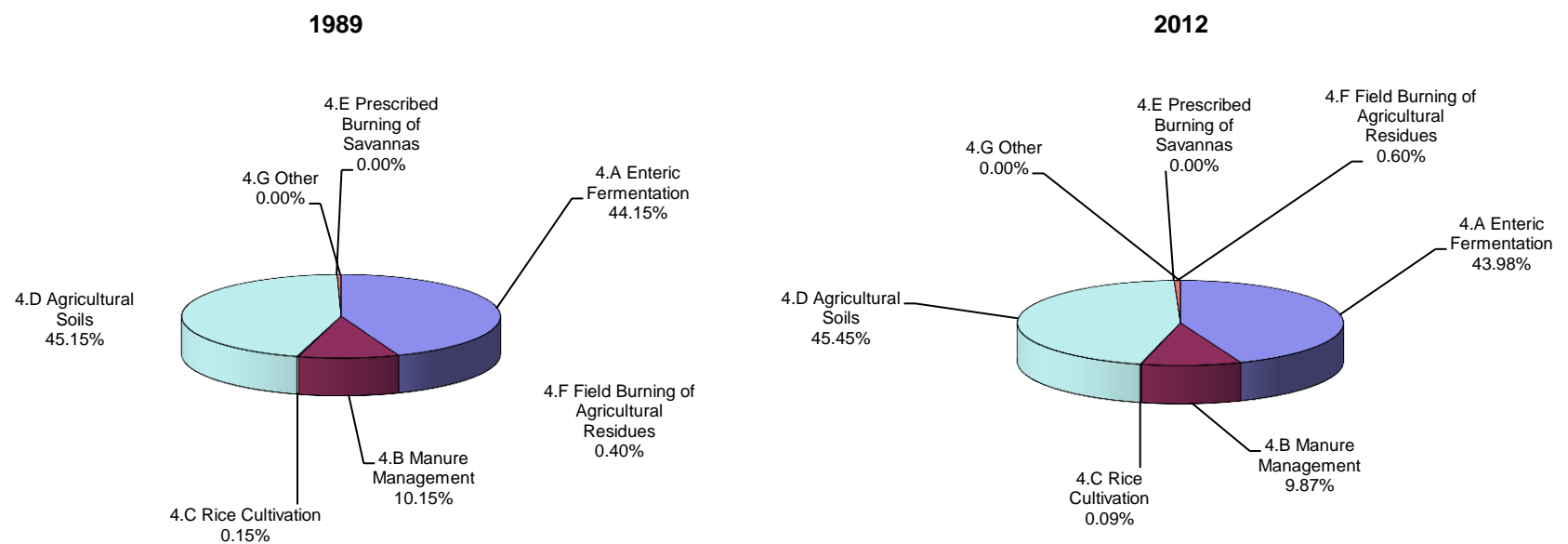
### Breakdown of GHG emissions within the energy sector



### Breakdown of GHG emissions within the industrial processes sector

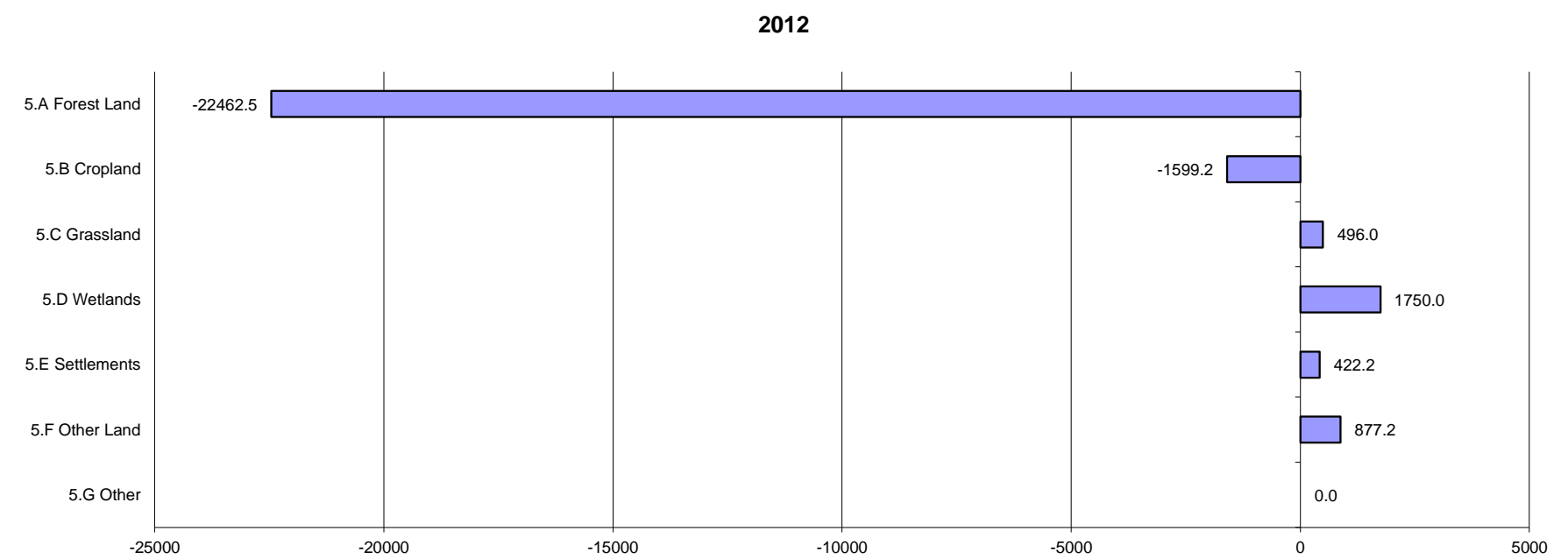
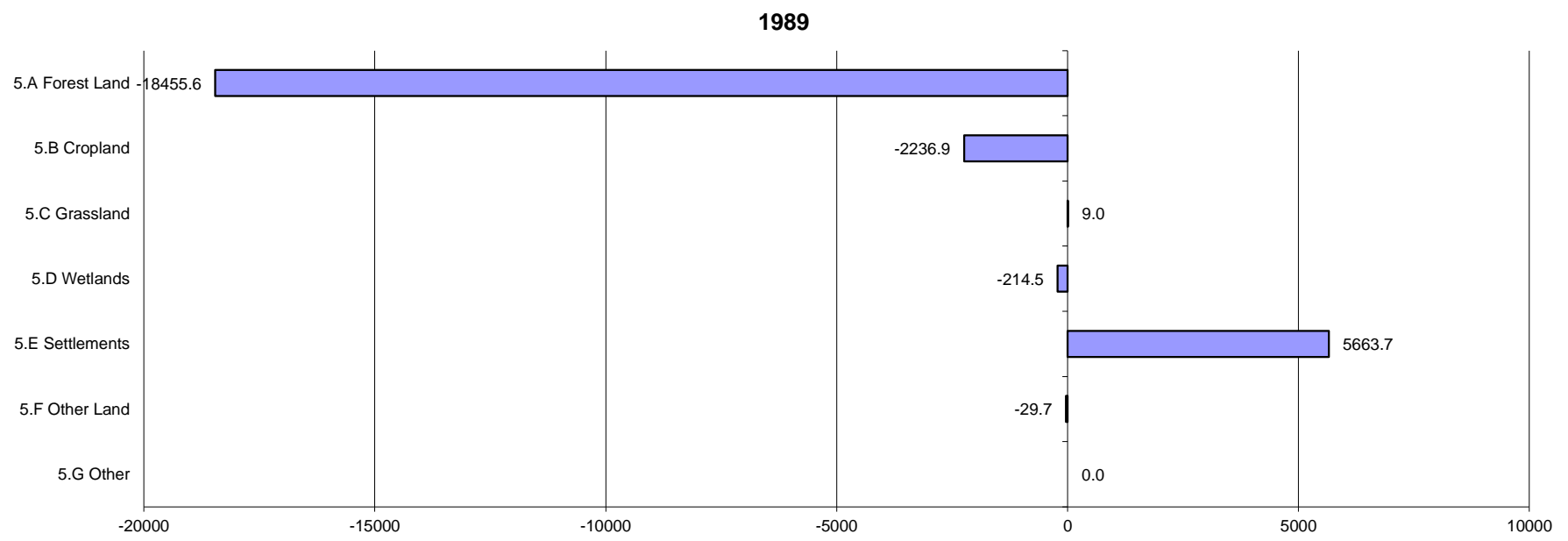


### Breakdown of GHG emissions within the agriculture sector





### Breakdown of GHG emissions/removals within the LULUCF sector, (Gg CO<sub>2</sub> equivalent)



### Breakdown of GHG emissions within the waste sector

