



Summary of GHG Emissions for Belgium

Base year (Convention) = 1990

| | Emissions, in Gg CO ₂ equivalent | | |
|--|---|-----------|-----------|
| | 1990 | 2000 | 2012 |
| CO ₂ emissions without LULUCF | 118 988.8 | 125 151.7 | 100 659.4 |
| CO ₂ net emissions/removals by LULUCF | -848.1 | -640.7 | -1 487.8 |
| CO ₂ net emissions/removals with LULUCF | 118 140.7 | 124 511.0 | 99 171.6 |
| GHG emissions without LULUCF | 142 952.1 | 145 857.2 | 116 520.3 |
| GHG net emissions/removals by LULUCF | -834.4 | -592.8 | -1 381.3 |
| GHG net emissions/removals with LULUCF | 142 117.7 | 145 264.4 | 115 139.1 |

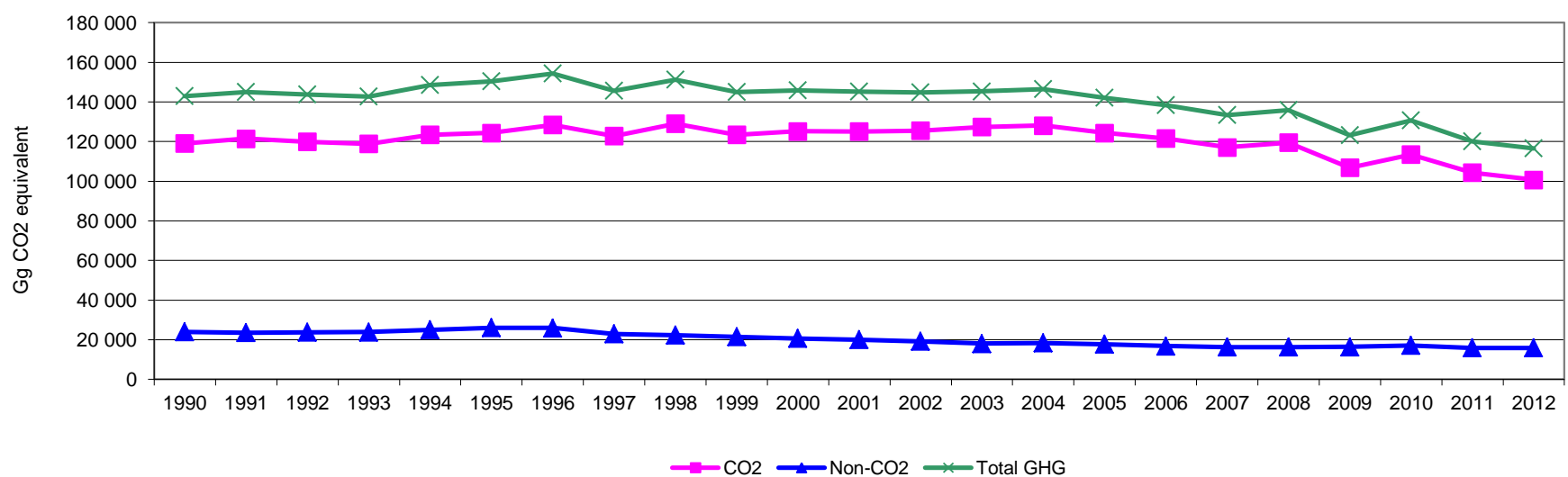
| | Changes in emissions, in per cent | | |
|--|-----------------------------------|-------------------|-------------------|
| | From 1990 to 2000 | From 2000 to 2012 | From 1990 to 2012 |
| CO ₂ emissions without LULUCF | 5.2 | -19.6 | -15.4 |
| CO ₂ net emissions/removals by LULUCF | -24.5 | 132.2 | 75.4 |
| CO ₂ net emissions/removals with LULUCF | 5.4 | -20.4 | -16.1 |
| GHG emissions without LULUCF | 2.0 | -20.1 | -18.5 |
| GHG net emissions/removals by LULUCF | -29.0 | 133.0 | 65.5 |
| GHG net emissions/removals with LULUCF | 2.2 | -20.7 | -19.0 |

| | Average annual growth rates, in per cent per year | | |
|--|---|-------------------|-------------------|
| | From 1990 to 2000 | From 2000 to 2012 | From 1990 to 2012 |
| CO ₂ emissions without LULUCF | 0.5 | -1.8 | -0.8 |
| CO ₂ net emissions/removals by LULUCF | -2.8 | 7.3 | 2.6 |
| CO ₂ net emissions/removals with LULUCF | 0.5 | -1.9 | -0.8 |
| GHG emissions without LULUCF | 0.2 | -1.9 | -0.9 |
| GHG net emissions/removals by LULUCF | -3.4 | 7.3 | 2.3 |
| GHG net emissions/removals with LULUCF | 0.2 | -1.9 | -1.0 |

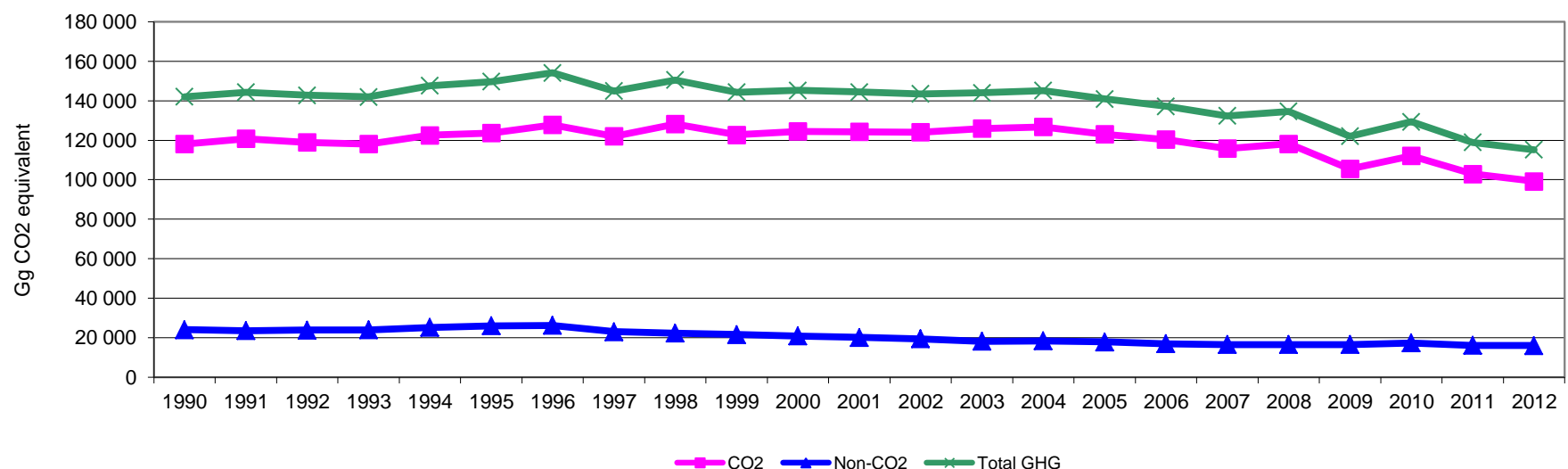
The base year under the Climate Change Convention is 1990 except for Bulgaria (1988), Hungary (average of 1985 to 1987), Poland (1988), Romania (1989) and Slovenia (1986), as defined by decisions 9/CP.2 and 11/CP.4.

Total GHG emissions, without and with LULUCF

GHG emissions (without LULUCF)

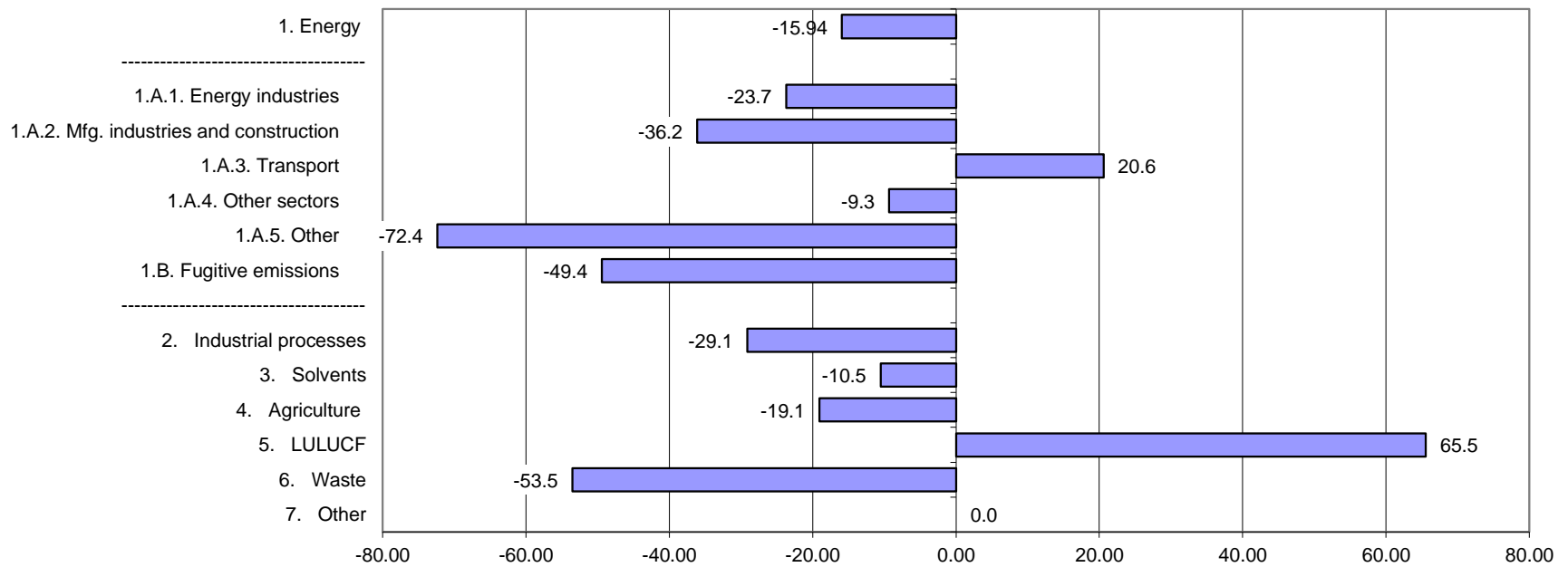


GHG emissions (with LULUCF)



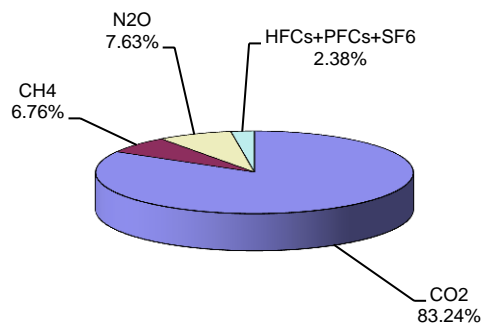


Change in GHG emissions/removals from 1990 to 2012, %

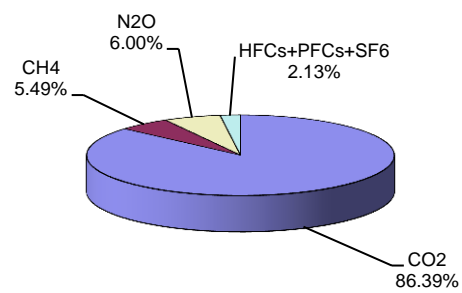


GHG emissions by gas

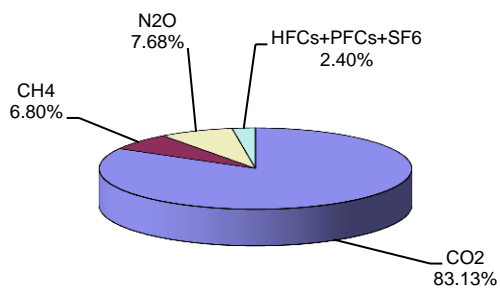
1990 (without LULUCF)



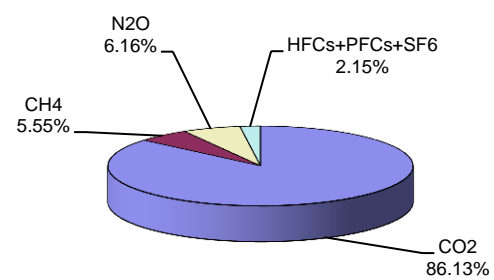
2012 (without LULUCF)



1990 (with LULUCF)

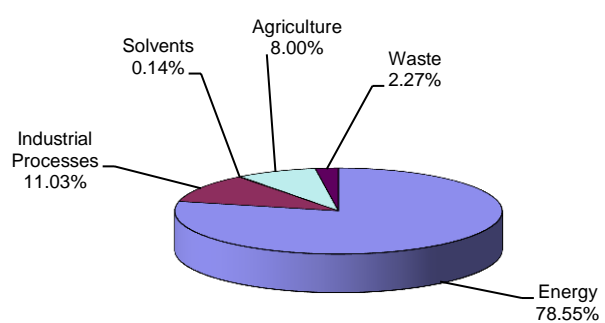


2012 (with LULUCF)

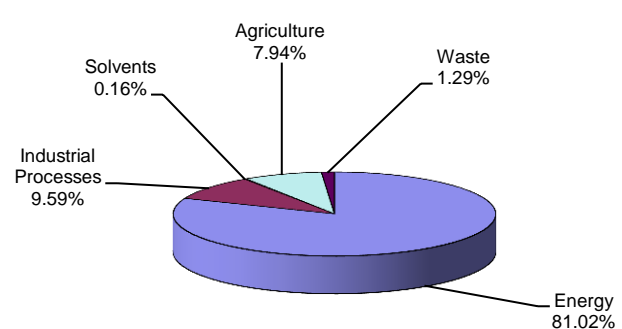


GHG emissions by sector (without LULUCF)

1990

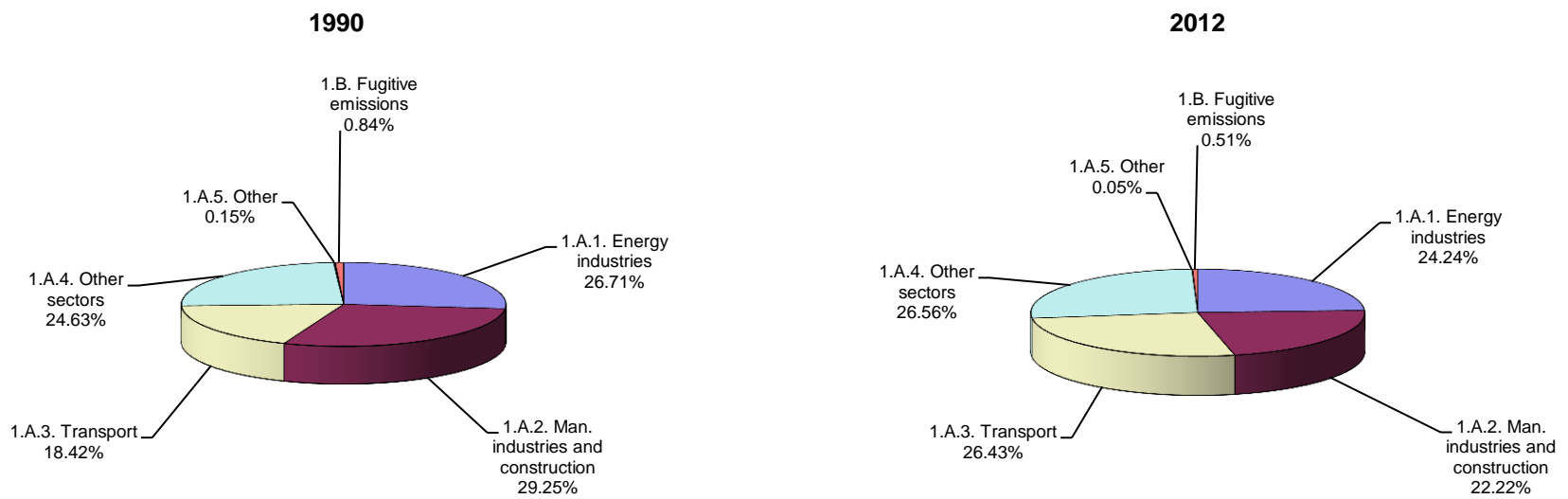


2012

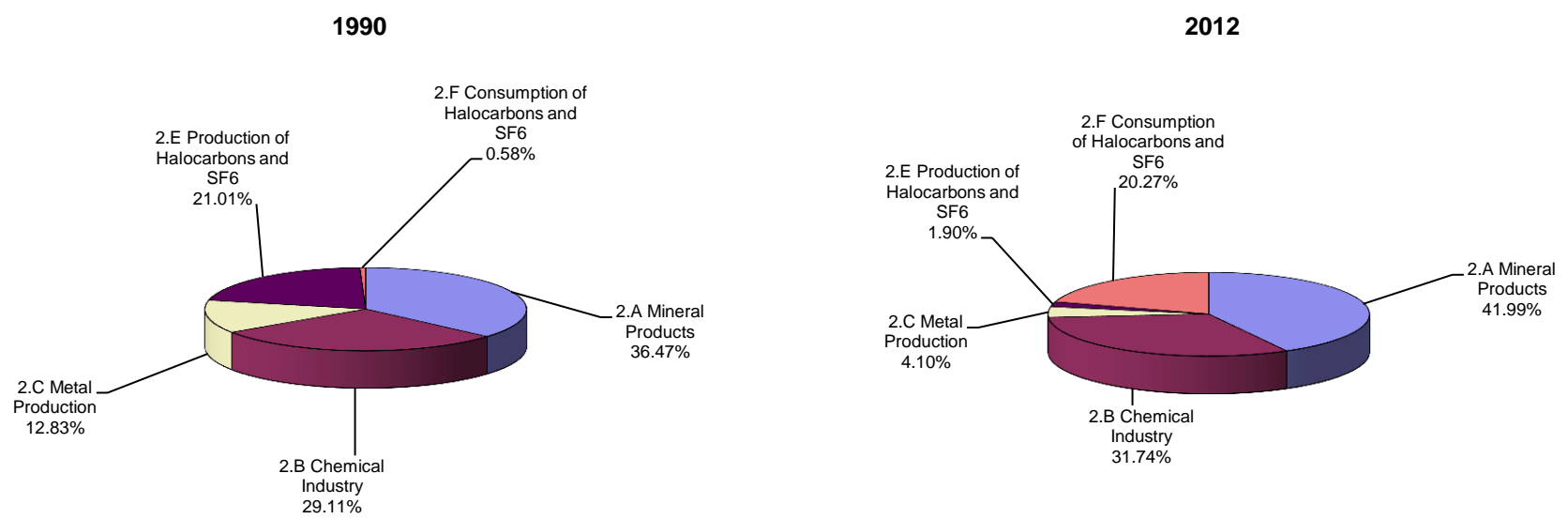




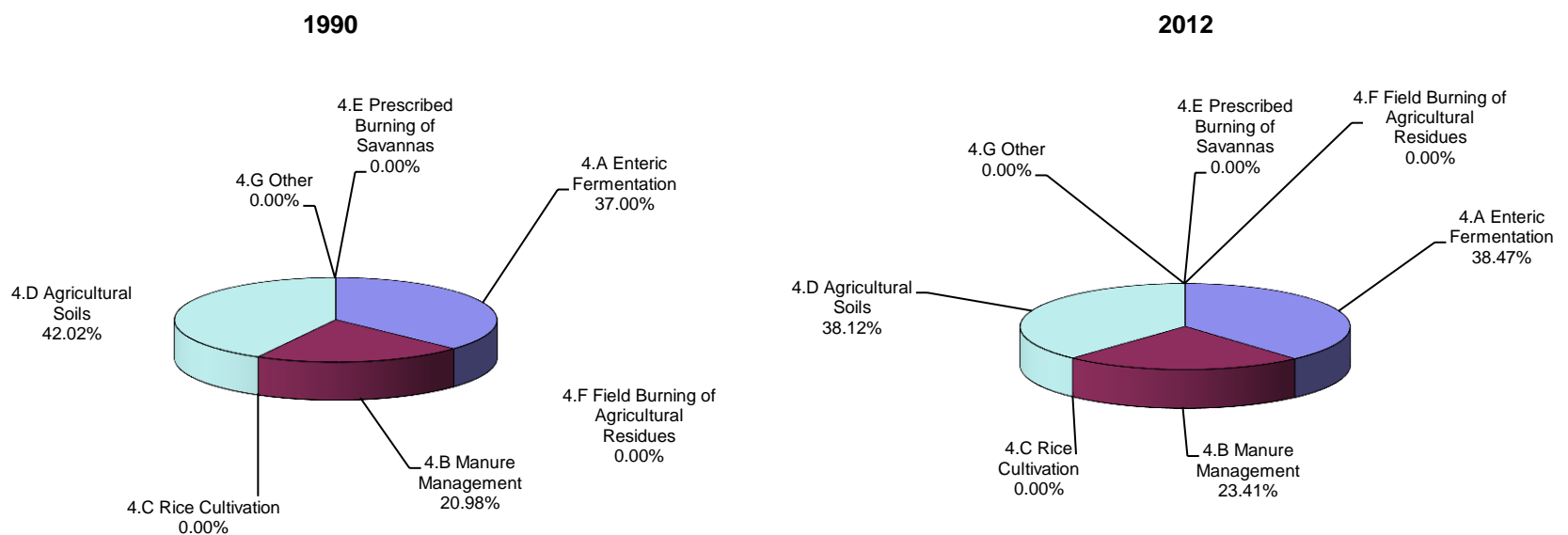
Breakdown of GHG emissions within the energy sector



Breakdown of GHG emissions within the industrial processes sector

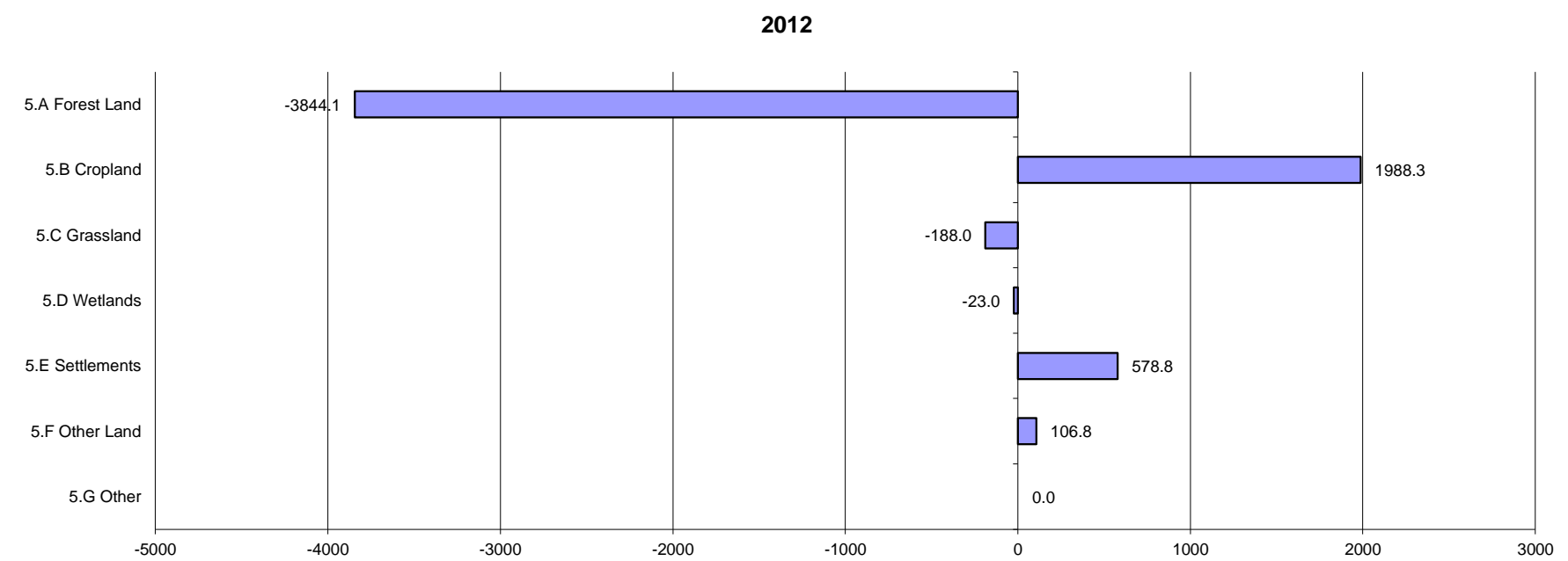
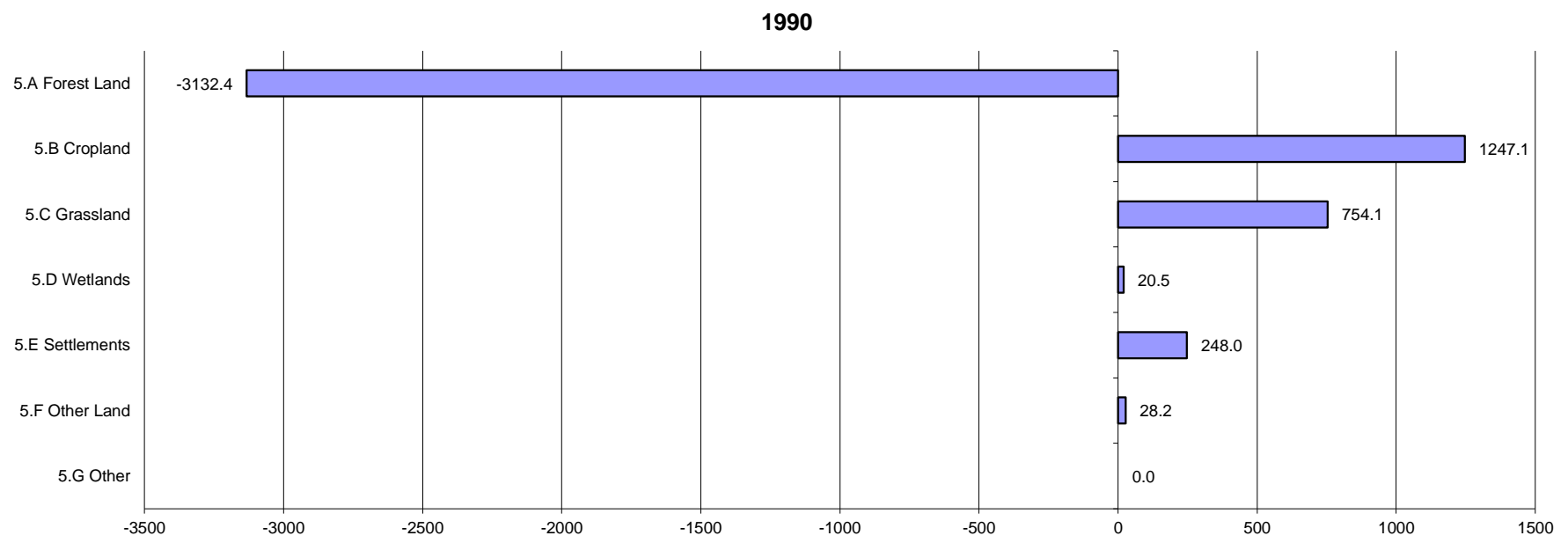


Breakdown of GHG emissions within the agriculture sector





Breakdown of GHG emissions/removals within the LULUCF sector, (Gg CO₂ equivalent)



Breakdown of GHG emissions within the waste sector

