

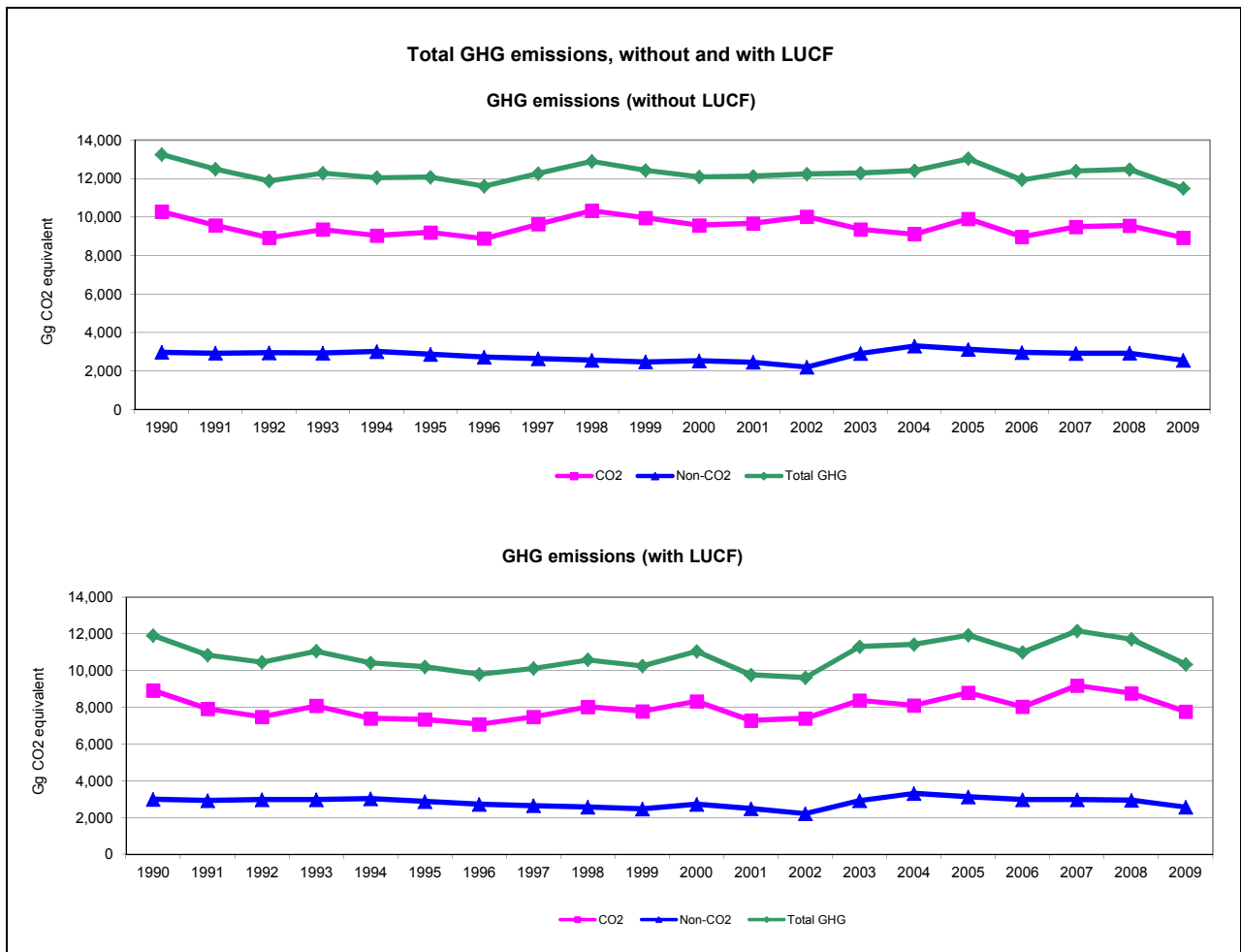


Emissions Summary for The former Yugoslav Republic of Macedonia

| | Emissions, in Gg CO ₂ equivalent | | |
|--|---|----------|------------------------------|
| | 1990 | 2000 | Latest available year (2009) |
| CO ₂ emissions without LUCF | 10,287.6 | 9,571.6 | 8,929.5 |
| CO ₂ net emissions/removals by LUCF | -1,362.3 | -1,236.2 | -1,160.1 |
| CO ₂ net emissions/removals with LUCF | 8,925.2 | 8,335.4 | 7,769.4 |
| GHG emissions without LUCF | 13,257.3 | 12,092.1 | 11,491.3 |
| GHG net emissions/removals by LUCF | -1,346.1 | -1,038.7 | -1,151.1 |
| GHG net emissions/removals with LUCF | 11,911.3 | 11,053.4 | 10,340.2 |

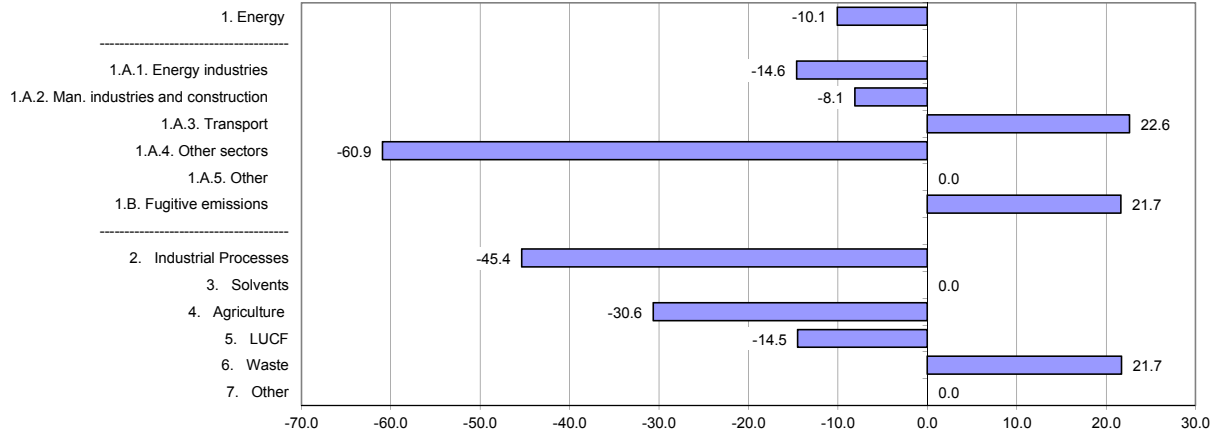
| | Changes in emissions, in per cent | | |
|--|-----------------------------------|---|---|
| | From 1990 to 2000 | From 2000 to latest available year (2009) | From 1990 to latest available year (2009) |
| CO ₂ emissions without LUCF | -7.0 | -6.7 | -13.2 |
| CO ₂ net emissions/removals by LUCF | -9.3 | -6.2 | -14.8 |
| CO ₂ net emissions/removals with LUCF | -6.6 | -6.8 | -13.0 |
| GHG emissions without LUCF | -8.8 | -5.0 | -13.3 |
| GHG net emissions/removals by LUCF | -22.8 | 10.8 | -14.5 |
| GHG net emissions/removals with LUCF | -7.2 | -6.5 | -13.2 |

| | Average annual growth rates, in per cent per year | | |
|--|---|---|---|
| | From 1990 to 2000 | From 2000 to latest available year (2009) | From 1990 to latest available year (2009) |
| CO ₂ emissions without LUCF | -0.7 | -0.8 | -0.7 |
| CO ₂ net emissions/removals by LUCF | -1.0 | -0.7 | -0.8 |
| CO ₂ net emissions/removals with LUCF | -0.7 | -0.8 | -0.7 |
| GHG emissions without LUCF | -0.9 | -0.6 | -0.7 |
| GHG net emissions/removals by LUCF | -2.6 | 1.1 | -0.8 |
| GHG net emissions/removals with LUCF | -0.7 | -0.7 | -0.7 |



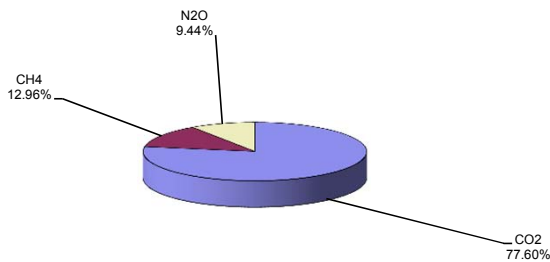


Change in GHG emissions/removals from 1990 to 2009, %

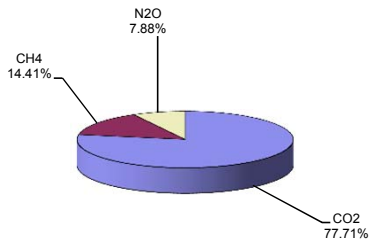


GHG emissions by gas

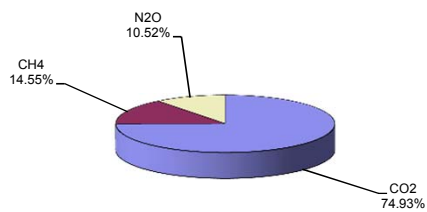
1990 (without LUCF)



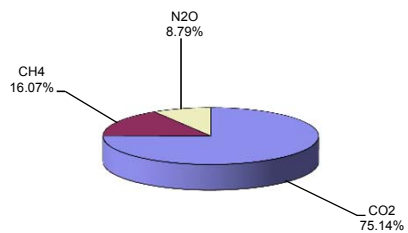
2009 (without LUCF)



1990 (with LUCF)

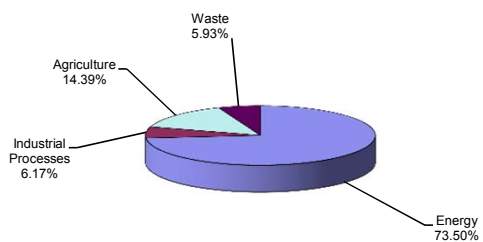


2009 (with LUCF)

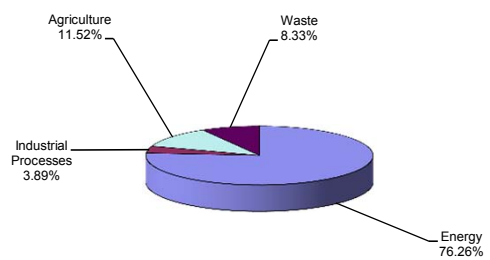


GHG emissions by sector (without LUCF)

1990

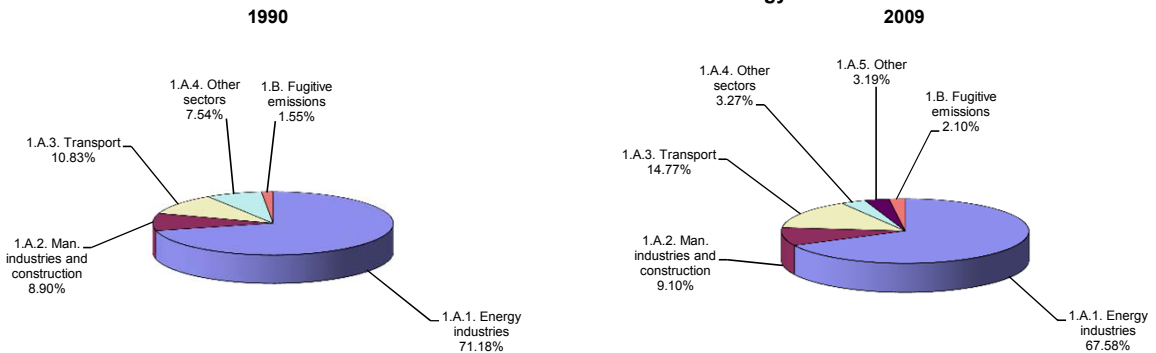


2009

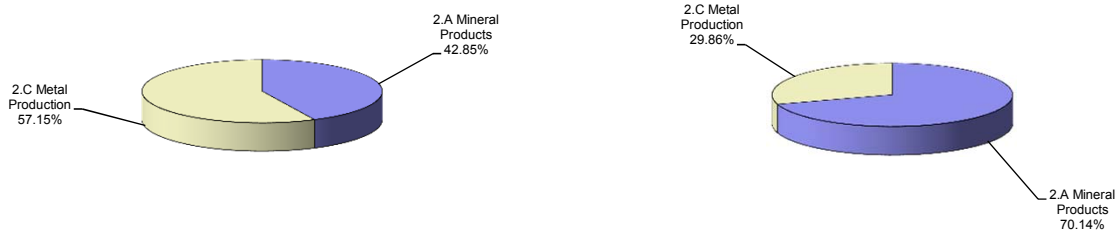




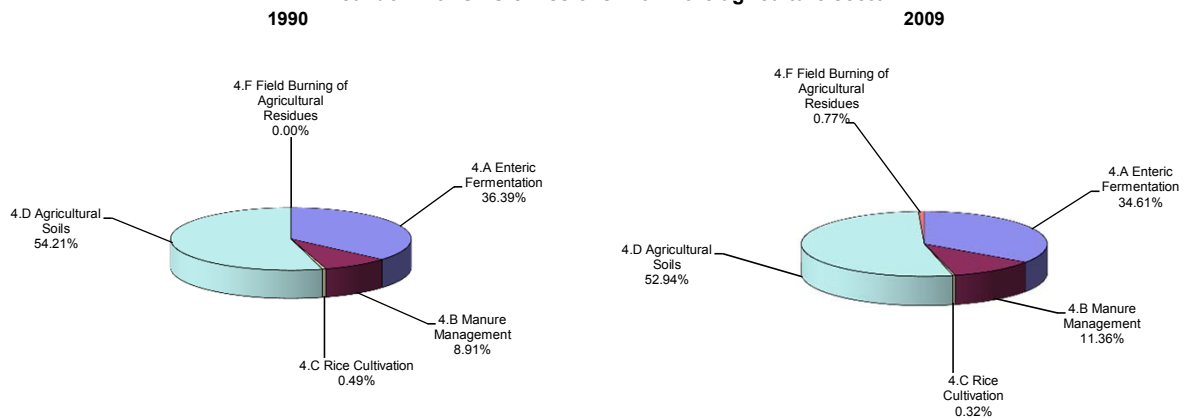
Breakdown of GHG emissions within the energy sector



Breakdown of GHG emissions within the industrial processes sector

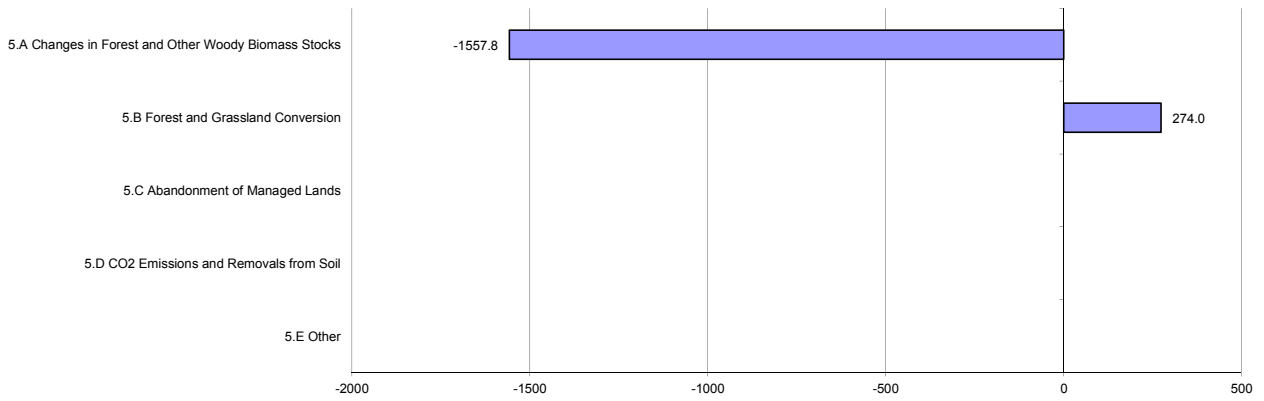


Breakdown of GHG emissions within the agriculture sector

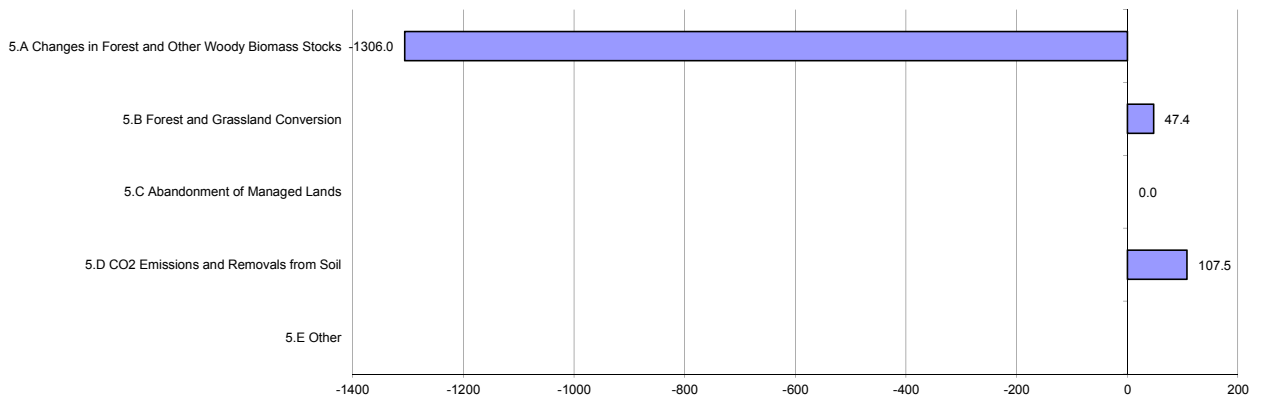




Breakdown of GHG emissions/removals within the LUCF sector, (Gg CO₂ equivalent) 1990

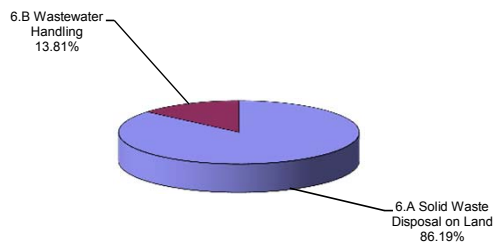


2009



Breakdown of GHG emissions within the waste sector

1990



2009

