



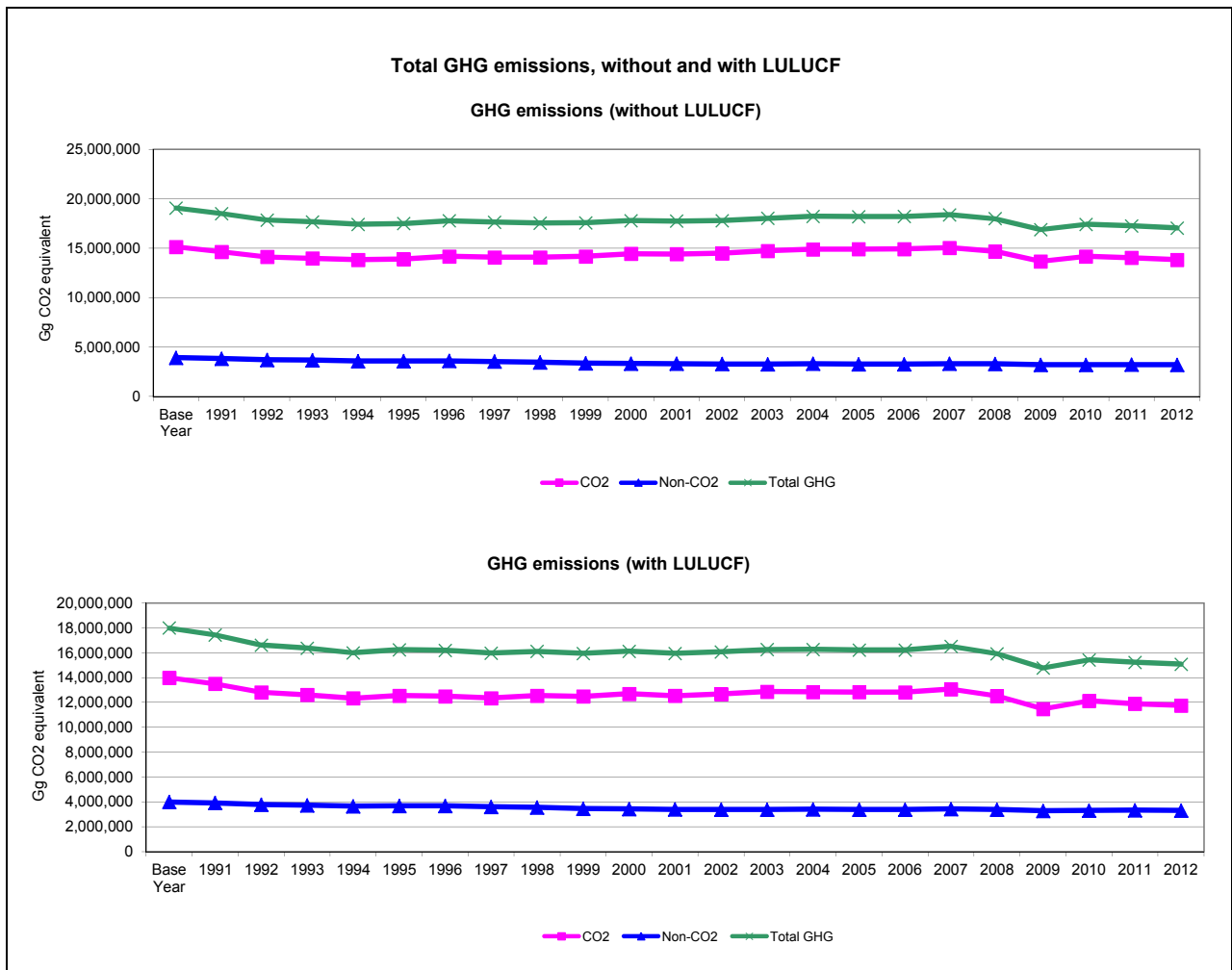
Summary of GHG Emissions for Annex I

	Emissions, in Gg CO ₂ equivalent		
	Base Year	2000	2012
CO ₂ emissions without LULUCF	15,152,415.3	14,445,911.2	13,829,736.8
CO ₂ net emissions/removals by LULUCF	-1,153,283.4	-1,745,782.7	-2,073,155.5
CO ₂ net emissions/removals with LULUCF	13,999,131.9	12,700,128.5	11,756,581.3
GHG emissions without LULUCF	19,079,634.3	17,797,100.4	17,046,747.1
GHG net emissions/removals by LULUCF	-1,086,564.4	-1,666,871.5	-1,970,154.6
GHG net emissions/removals with LULUCF	17,993,069.9	16,130,228.9	15,076,592.5

	Changes in emissions, in per cent		
	From Base Year to 2000	From 2000 to 2012	From Base Year to 2012
CO ₂ emissions without LULUCF	-4.7	-4.3	-8.7
CO ₂ net emissions/removals by LULUCF	51.4	18.8	79.8
CO ₂ net emissions/removals with LULUCF	-9.3	-7.4	-16.0
GHG emissions without LULUCF	-6.7	-4.2	-10.7
GHG net emissions/removals by LULUCF	53.4	18.2	81.3
GHG net emissions/removals with LULUCF	-10.4	-6.5	-16.2

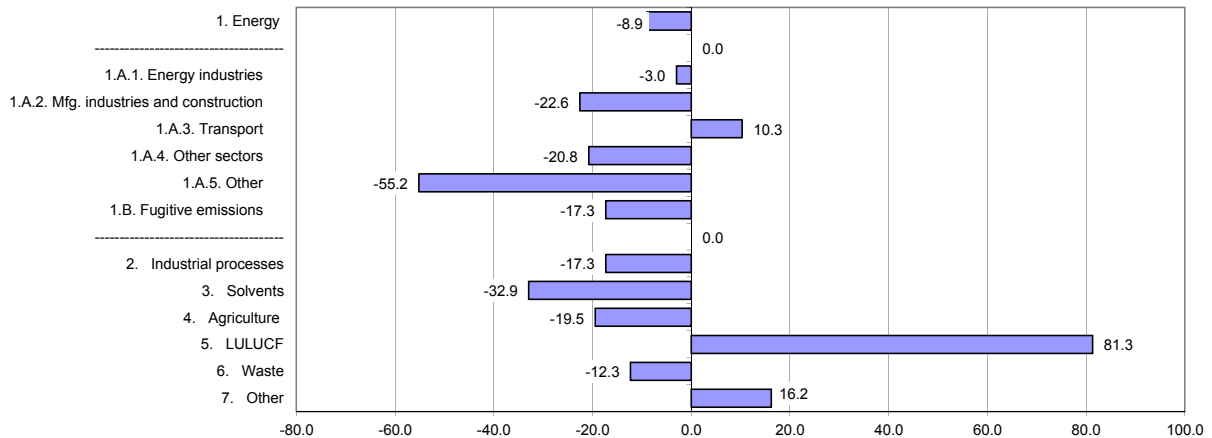
	Average annual growth rates, in per cent per year		
	From Base Year to 2000	From 2000 to 2012	From Base Year to 2012
CO ₂ emissions without LULUCF	-0.5	-0.4	-0.4
CO ₂ net emissions/removals by LULUCF	4.2	1.4	2.7
CO ₂ net emissions/removals with LULUCF	-1.0	-0.6	-0.8
GHG emissions without LULUCF	-0.7	-0.4	-0.5
GHG net emissions/removals by LULUCF	4.4	1.4	2.7
GHG net emissions/removals with LULUCF	-1.1	-0.6	-0.8

The base year under the Climate Change Convention is 1990 except for Bulgaria (1988), Hungary (average of 1985 to 1987), Poland (1988), Romania (1989) and Slovenia (1986), as defined by decisions 9/CP.2 and 11/CP.4.



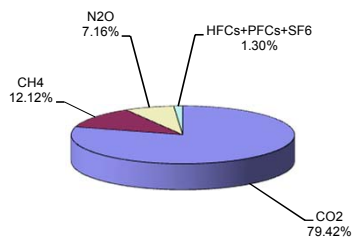


Change in GHG emissions/removals from Base Year to 2012, %

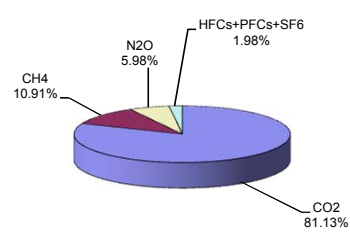


GHG emissions by gas

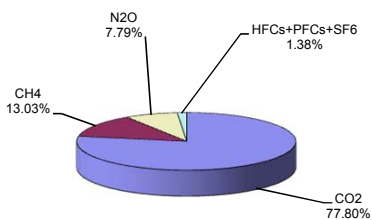
Base Year (without LULUCF)



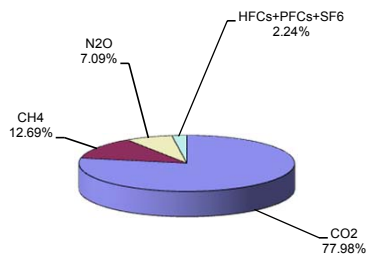
2012 (without LULUCF)



Base Year (with LULUCF)

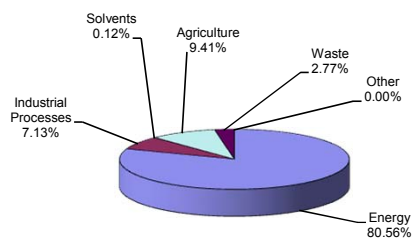


2012 (with LULUCF)

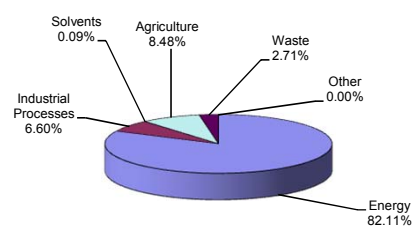


GHG emissions by sector (without LULUCF)

Base Year

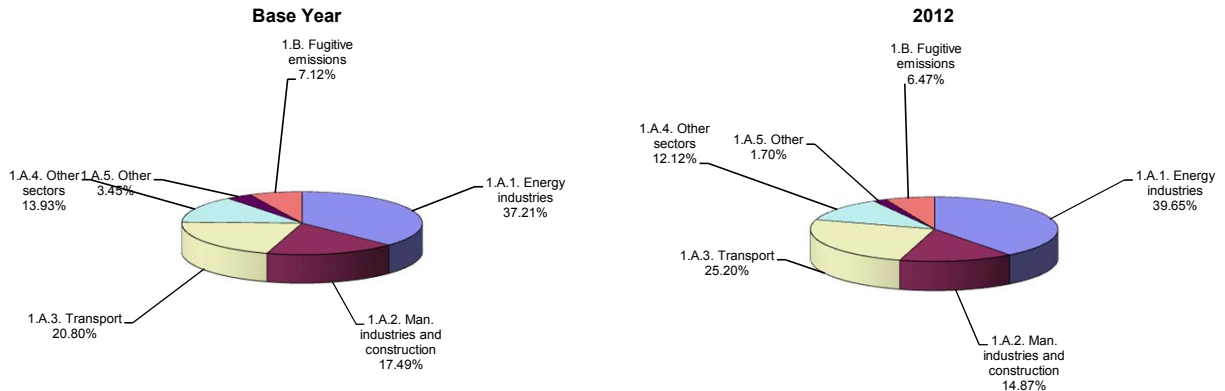


2012

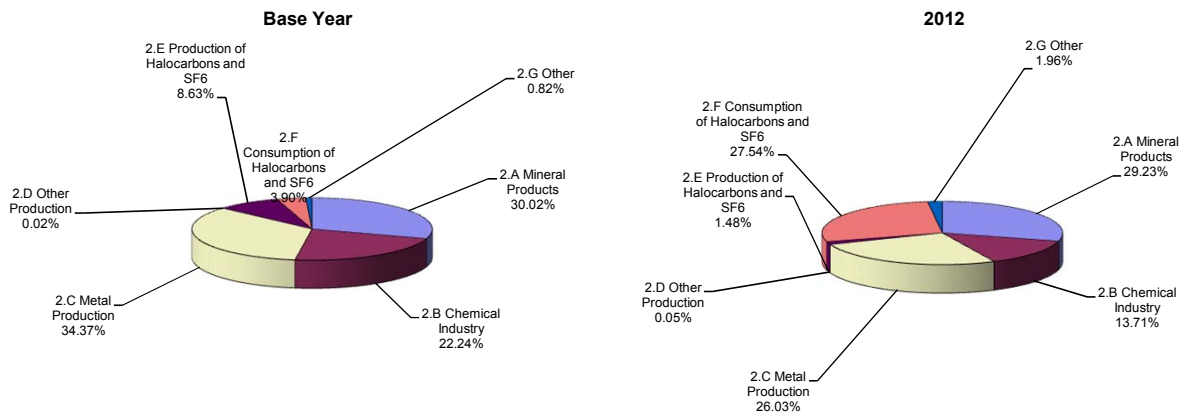




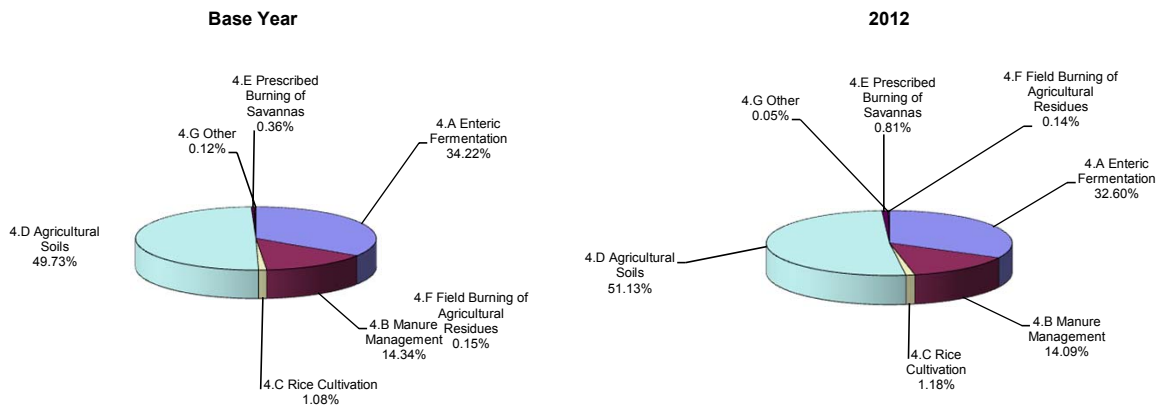
Breakdown of GHG emissions within the energy sector



Breakdown of GHG emissions within the industrial processes sector



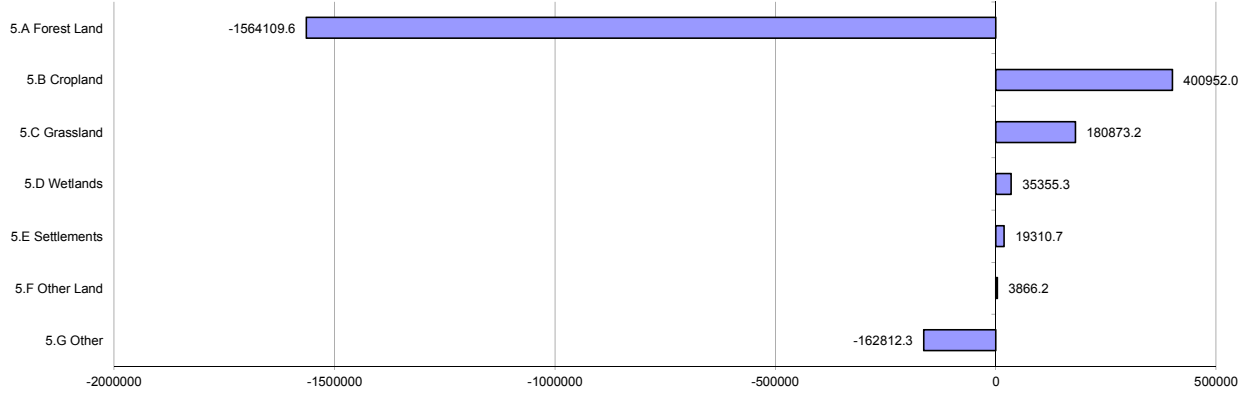
Breakdown of GHG emissions within the agriculture sector



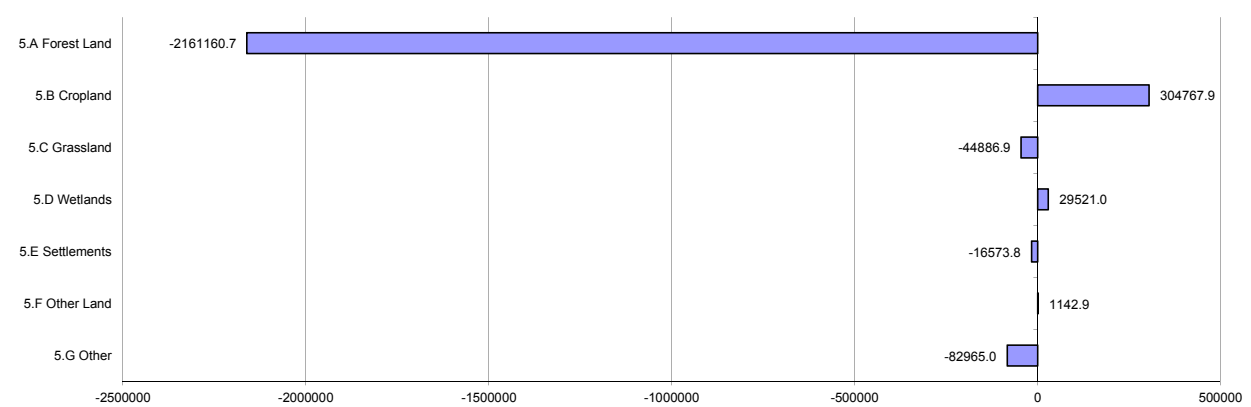


Breakdown of GHG emissions/removals within the LULUCF sector, (Gg CO₂ equivalent)

Base Year

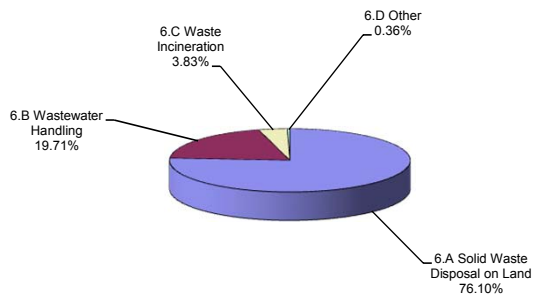


2012



Breakdown of GHG emissions within the waste sector

Base Year



2012

