



# PHILIPPINES



**ARNOLD GRANT S. BELVER**  
**[arnold.belver@climate.gov.ph](mailto:arnold.belver@climate.gov.ph)**

# Philippines Response to Climate Change: Institutions, Policies and Programs/Strategies

## 1990-1995

- IACC established (1991)
- PHL signs UNFCCC (1994)
- PHL GHG Inventory (1994)

## 1996-2000

- 1<sup>st</sup> PHL National Communication (1999)

## 2001-2005

- PHL Government signs Kyoto Protocol (2003)

## 2006-2010

- Biofuels Act (2006)
- Presidential Task Force on CC (2007)
- Renewable Energy Act (2009)
- Climate Change Act (2009)

## 2011-2015

- Guidelines in Tagging/Tracking Government Expenditures for Climate Change in the Budget Process (2013)
- National Framework Strategy on Climate Change (2010)
- PHL Disaster Risk Reduction and Management Act (2010)
- The PHL Strategy on Climate Change Adaptation (2010)
- National Climate Change Action Plan (2011)
- Cabinet Cluster on Integrity of the environment and climate change adaptation and mitigation (2011)
- People's Survival Fund Act (2012)
- Mainstreaming Climate Change in the DA Programs, Plans, & Budget (2013)
- Integrating DRR and CCA concerns in PHL EIS System

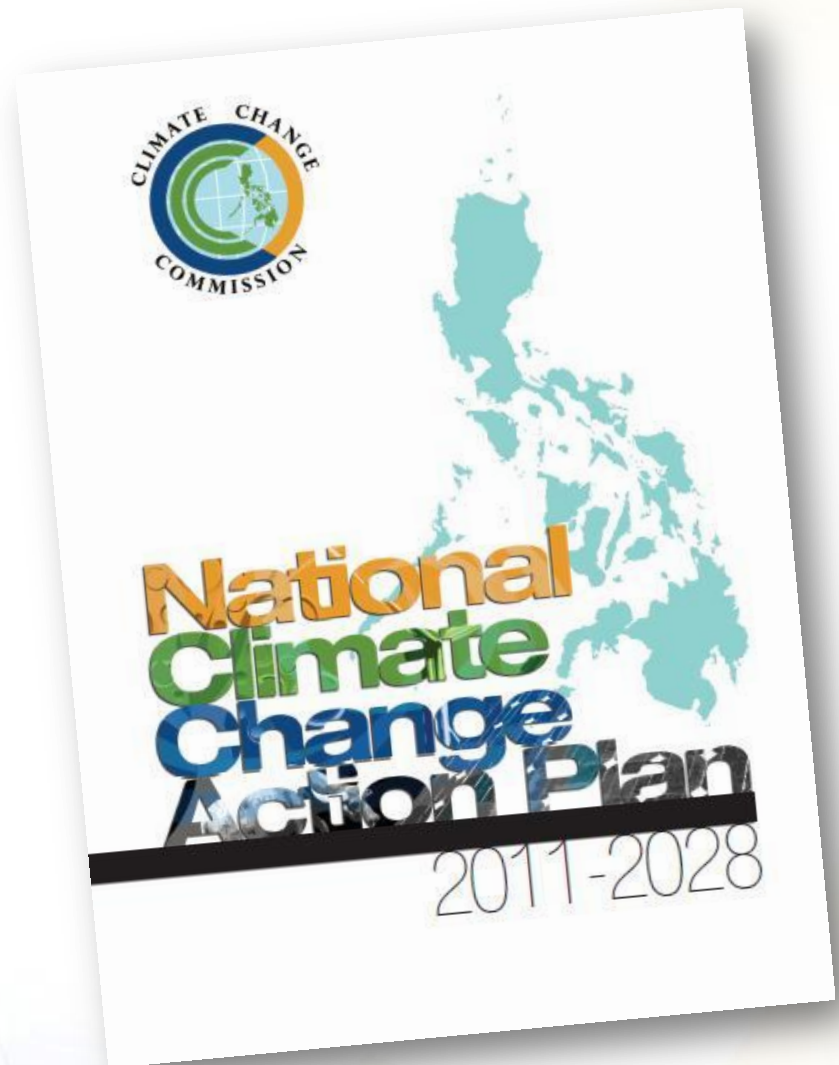
# Philippine Climate Policy on Mitigation

## Long-term objective:

Facilitate the transition towards low greenhouse gas emissions for sustainable development

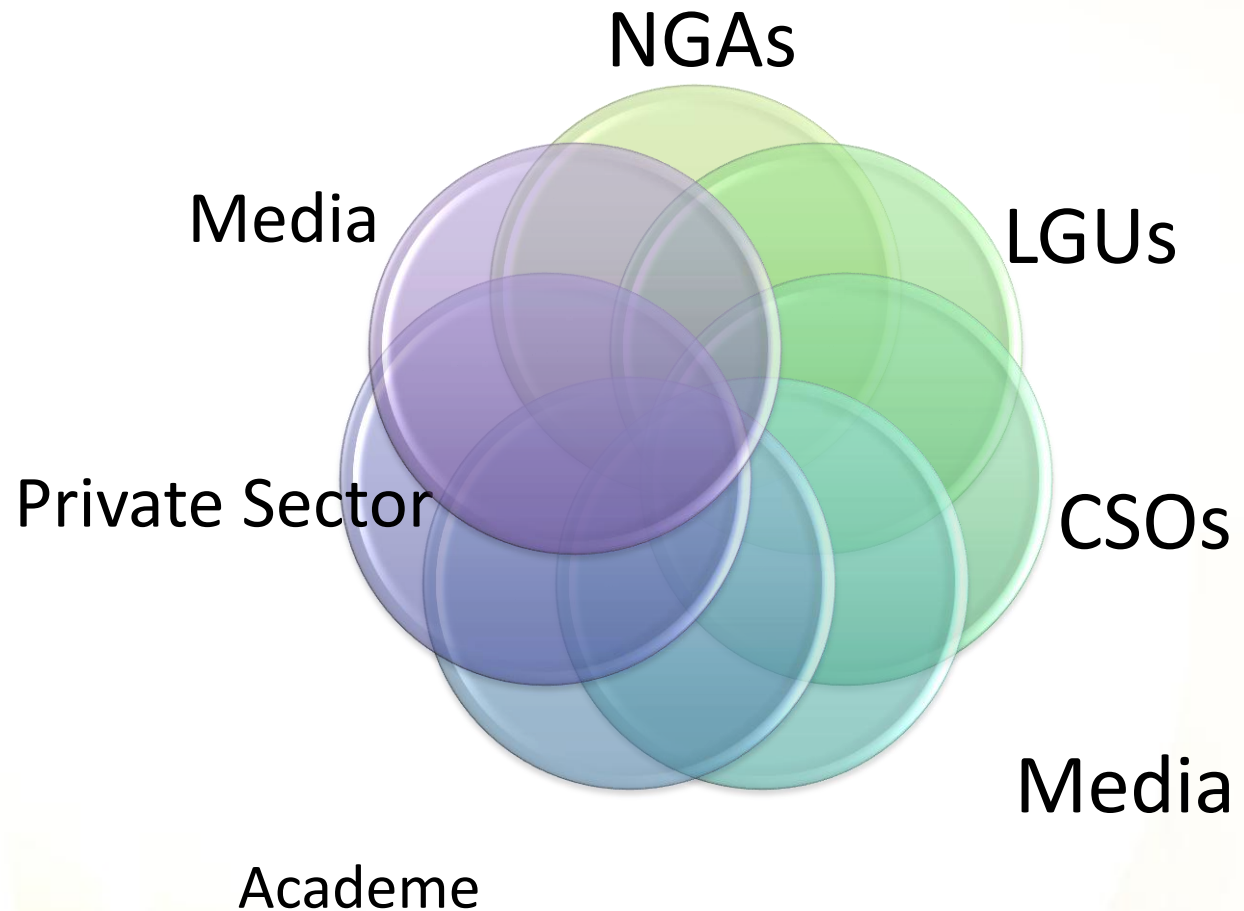
## Key Result Areas (Objectives and strategic priorities per KRA are outlined in the NFSCC)

- Energy Efficiency and Conservation
- Renewable Energy
- Environmentally Sustainable Transport
- Sustainable Infrastructure
- National REDD+ Strategy
- Waste Management



# How the CCC works

- Coordinative in driving the process in addressing CC
- Enhance existing mandates to include CC in their Plans and Programs
- Engaging stakeholders in the different plans and activities of the CCC
- Consultative approach to CC Activities

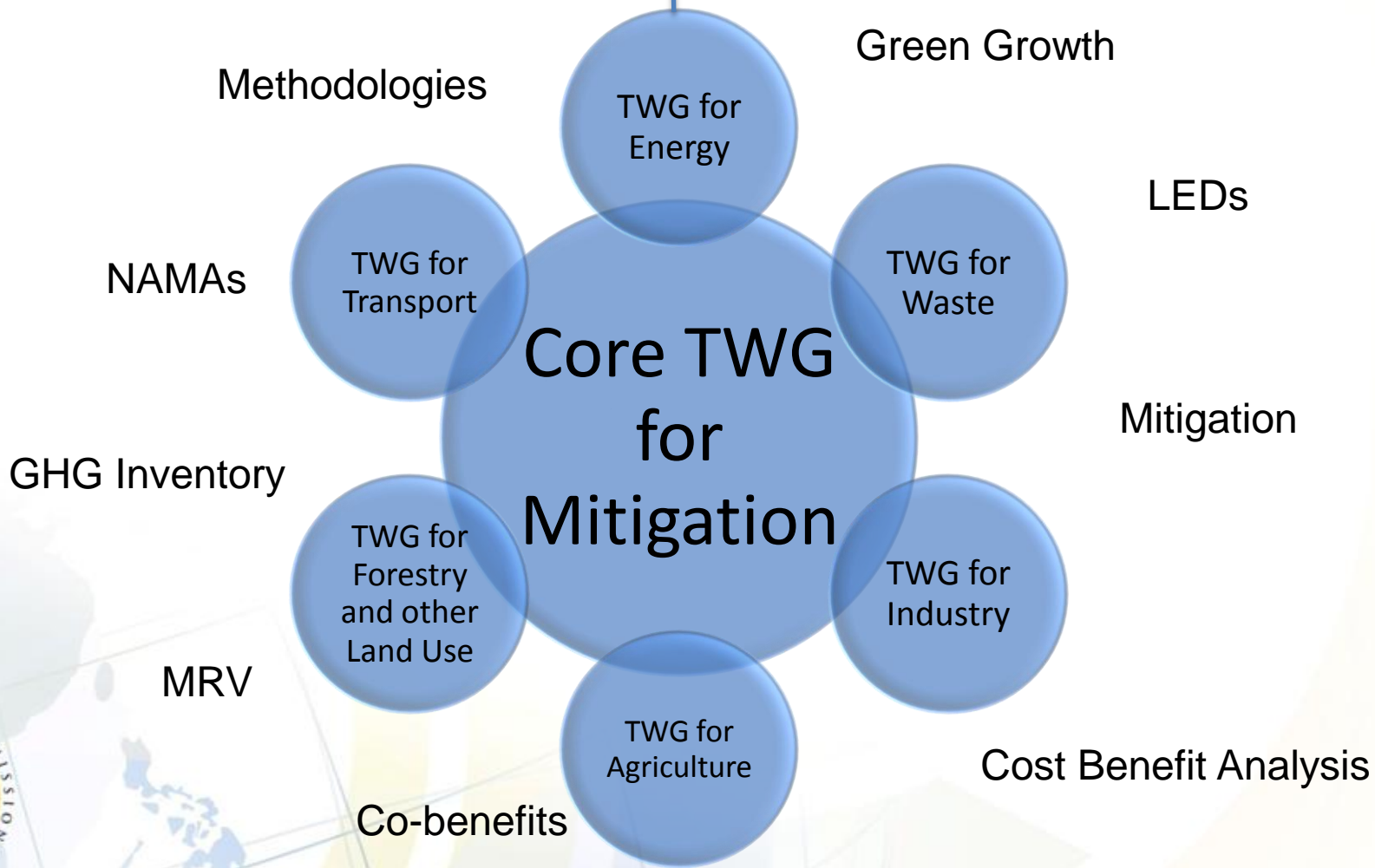


# Cabinet Cluster

- Assess the degree of accomplishment in partnership with the private sector and civil society
- Evaluate the milestones relative to the intended outcomes
- Undertake the necessary measures to fast track program.



# CLIMATE CHANGE COMMISSION



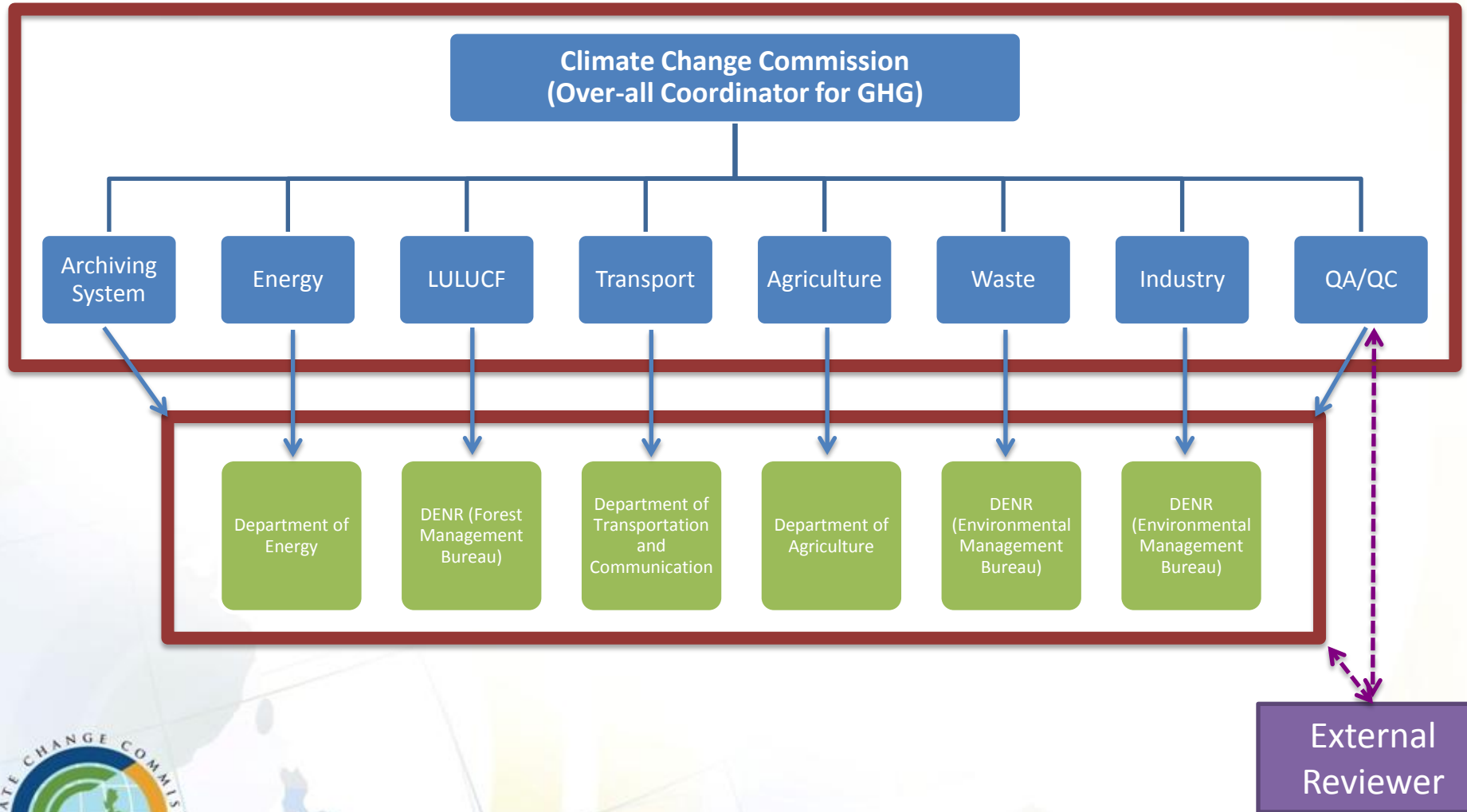
# CCM Initiatives

## Greenhouse Gas Inventory

- Levels
  - National
  - Community-level
  - Entity-level
  - Project Level
- Strategies
  - Capacity Building
  - Policy Instruments and Institutional Arrangements
  - Research and Data Assessment
  - Consultations



# National GHG Inventory Plan





# Activities towards the Formulation of the NAMA Roadmap

Activity	Sector	Lead Agency	Funding Source
Institutional Arrangements & Framework - Core TWG - Sectoral TWG (AWIT-FE)	Waste, Industry, Agriculture Energy, Forestry, Transport	CCC	CCC Regular funds and LECB
Study on Sectoral NAMA Options	Waste, Industry, Agriculture Energy, Forestry, Transport	CCC	LECB and CCC Regular Funds
Mitigation Potential / NAMA devt (?)	Waste Energy Efficiency	NSWMC CCC and DOE	GIZ – BIFA UNEP
Multi-criteria Analysis for NAMA	multi-sectoral	CCC	SEAN-CC (UNEP); LECB

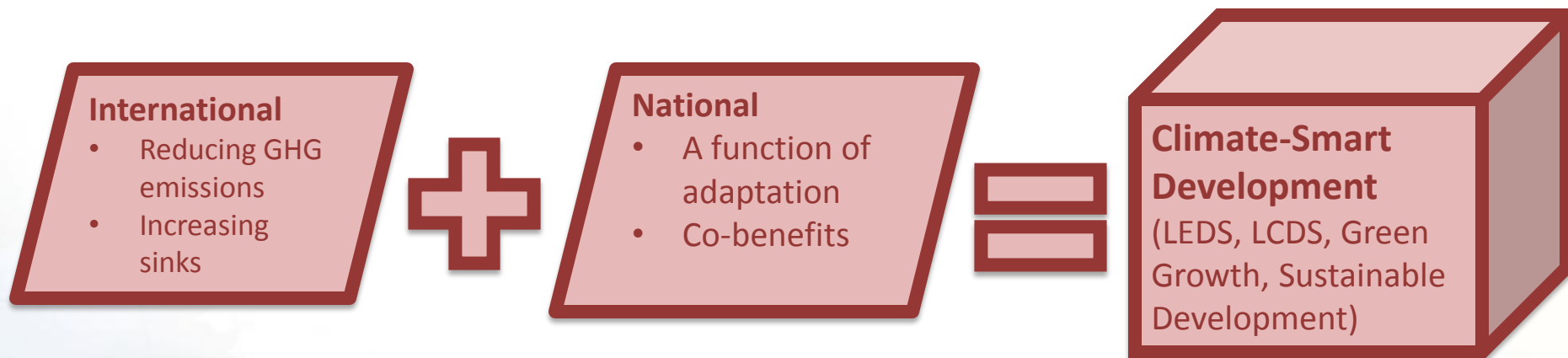


# Activities towards the Formulation of the NAMA Roadmap (cont.)

Activity	Sector	Lead Agency	Funding Source
Proposal for the NAMA Facility of UK-Germany	Waste	NSWMC (assisted by GIZ)	Germany and UK
	RE	DOE (assisted by CCAP)	
Tools and Methodologies for Mitigation analysis	Energy	DOE – LEAP	USAID (EC LEDS)
		Transport tools	USAID (EC LEDS)
Capacity Building - NAMA		CCC	GIZ LECB (webinars)
Mitigation models	Multi-sectoral Multi-sectoral	WWF NEDA	BMU ADB



# Mitigation as we see it



# Conclusion

- Mitigation as a function of adaptation
  - Co-benefits
  - Climate-resiliency with LEDS
- Consistent with national position to international negotiations
- Sensitization of senior officials and technical training for technical staff
- Stakeholder participation critical
- Look at complementation of activities and support received on mitigation



# Conclusion

\*Formulation of the Mitigation Framework for the Philippines consistent with CC Act, NFSCC and NCCAP

**GHG Accounting Inventory System**

**Domestic MRV system**  
*(Measurable, Reportable, Verifiable)*

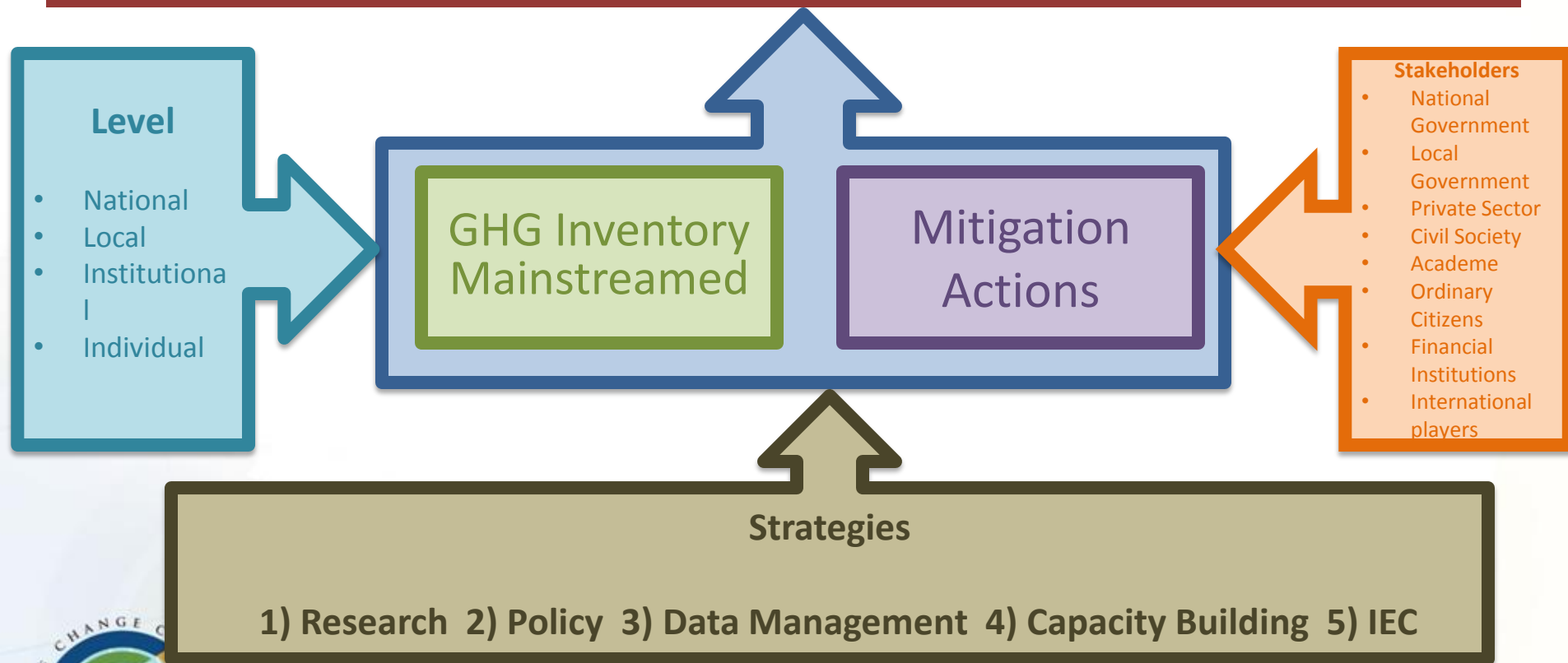
**NAMAs roadmap**  
*(Nationally Appropriate Mitigation Actions)*

**LEDS/LCDS Framework**  
*(Low Emission Development Strategies/ Low Carbon Development Strategies)*



# Conclusion

## Transition towards Climate-Smart Development





**CLIMATE CHANGE COMMISSION**  
**Little Presidents' Learning Palace**  
**1558 JP Laurel Street**  
**Malacañang Complex, San Miguel**  
**MANILA, PHILIPPINES**

[www.climate.gov.ph](http://www.climate.gov.ph)

[info@climate.gov.ph](mailto:info@climate.gov.ph)

