



## The NAMA Facility – Support for the Implementation of NAMAs



**UNFCCC Regional Workshops on  
NAMAs**

**1 – October 2014**

**Windhoek, Namibia**

# Purpose and Facts of the NAMA Facility

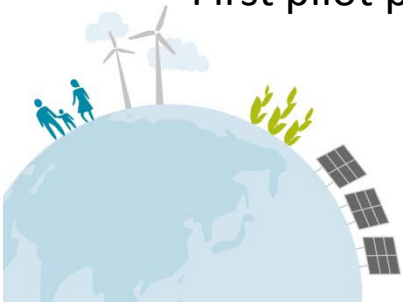
---

## Purpose:

- Demonstrating a framework for providing tailor-made climate finance for developing countries in the field of mitigation.
- Building on existing support by funding the implementation of transformational NAMAs seeking international support, thus delivering concrete results on the ground.
- Raising ambition to close the global emissions gap and address the lack of NAMA climate finance.

## Facts :

- Officially announced by Germany and the UK at COP-18 in Doha
- Germany and the UK jointly provided € 120m of funding
- First pilot programme is the Mexico Housing NAMA: EcoCasa programme



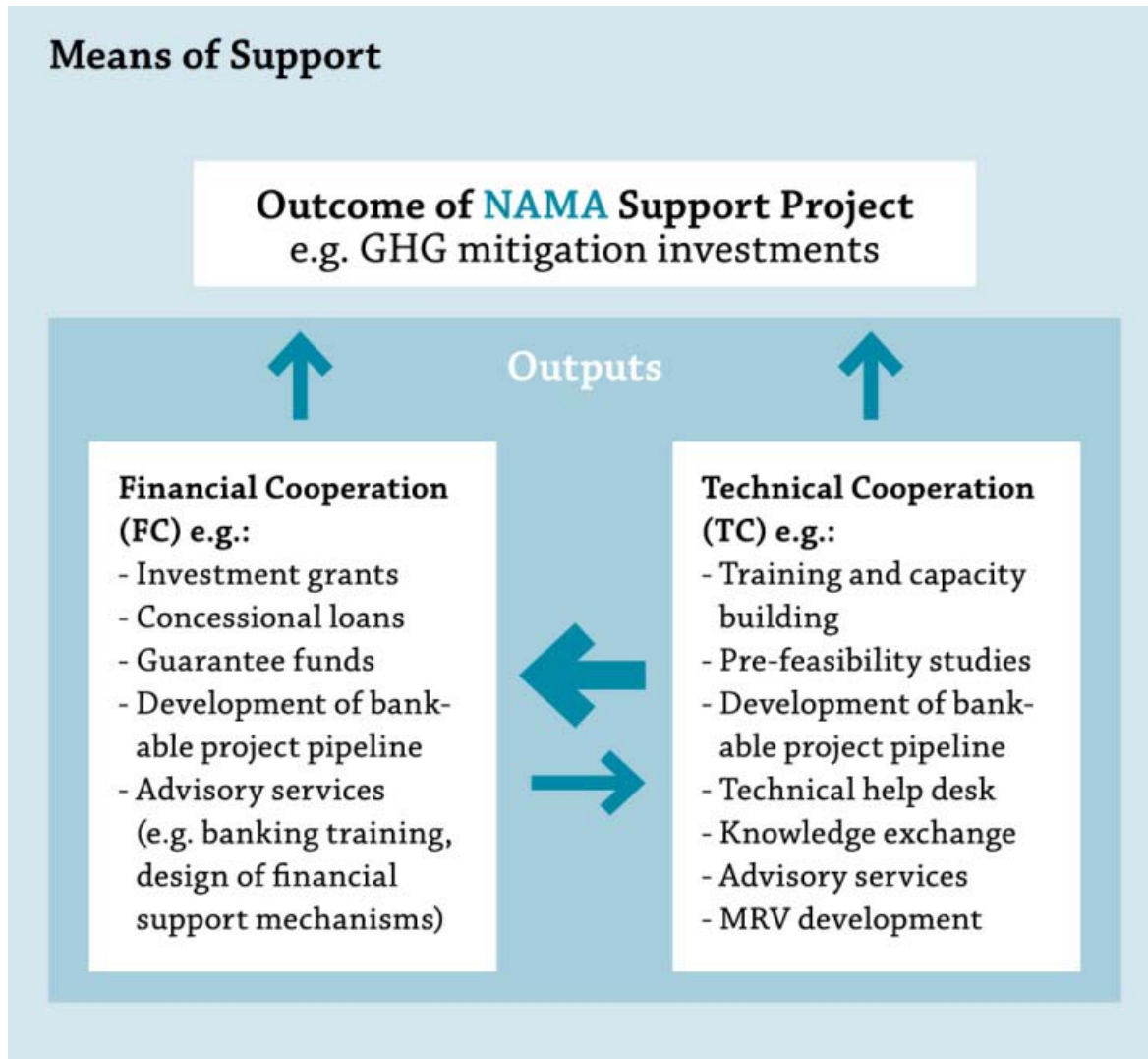
# Means of Support

---

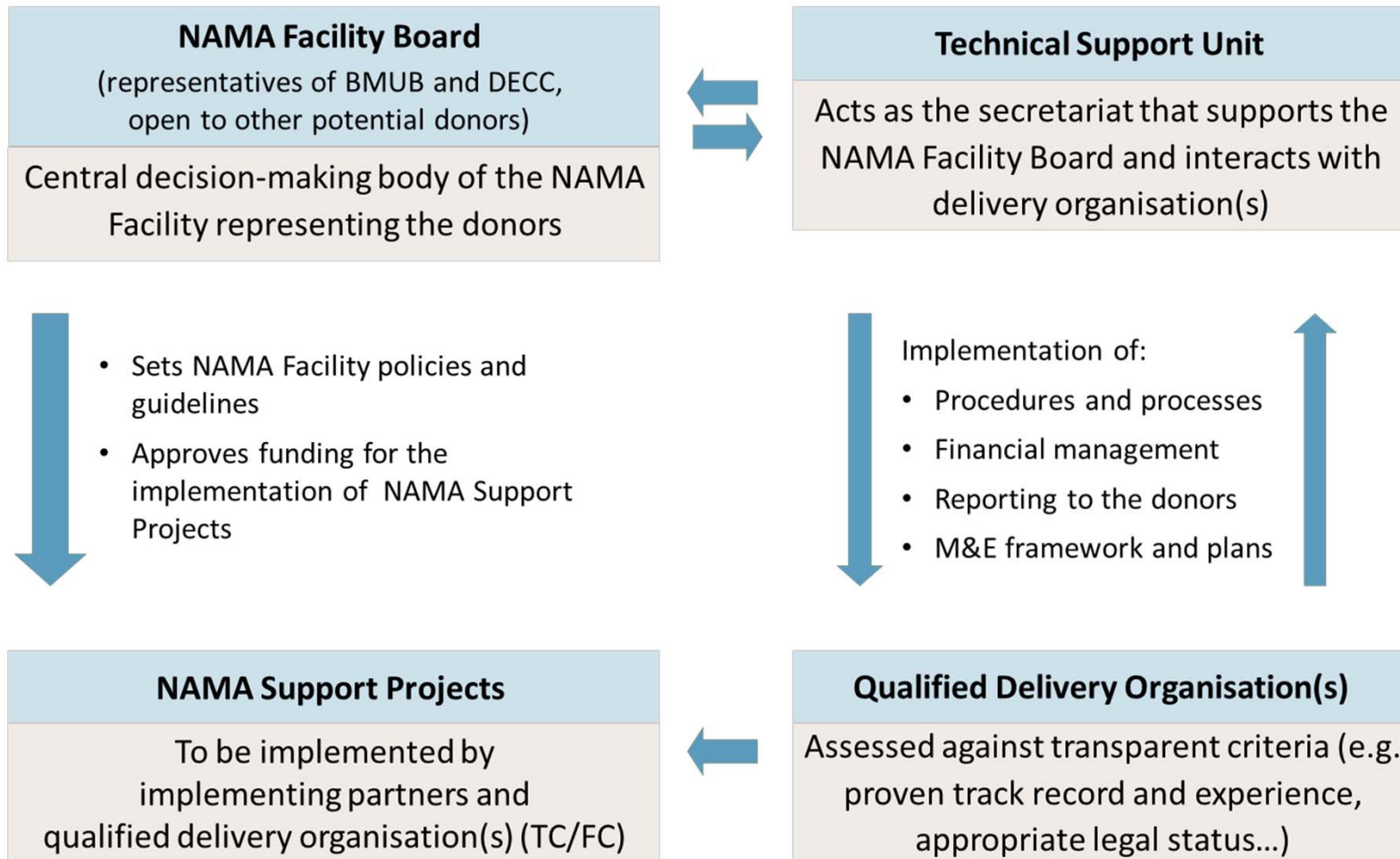


- Provides support for the **implementation** of parts of a NAMA = NAMA Support Project
- Uses full range of development cooperation instruments
- Builds on existing channels of delivery

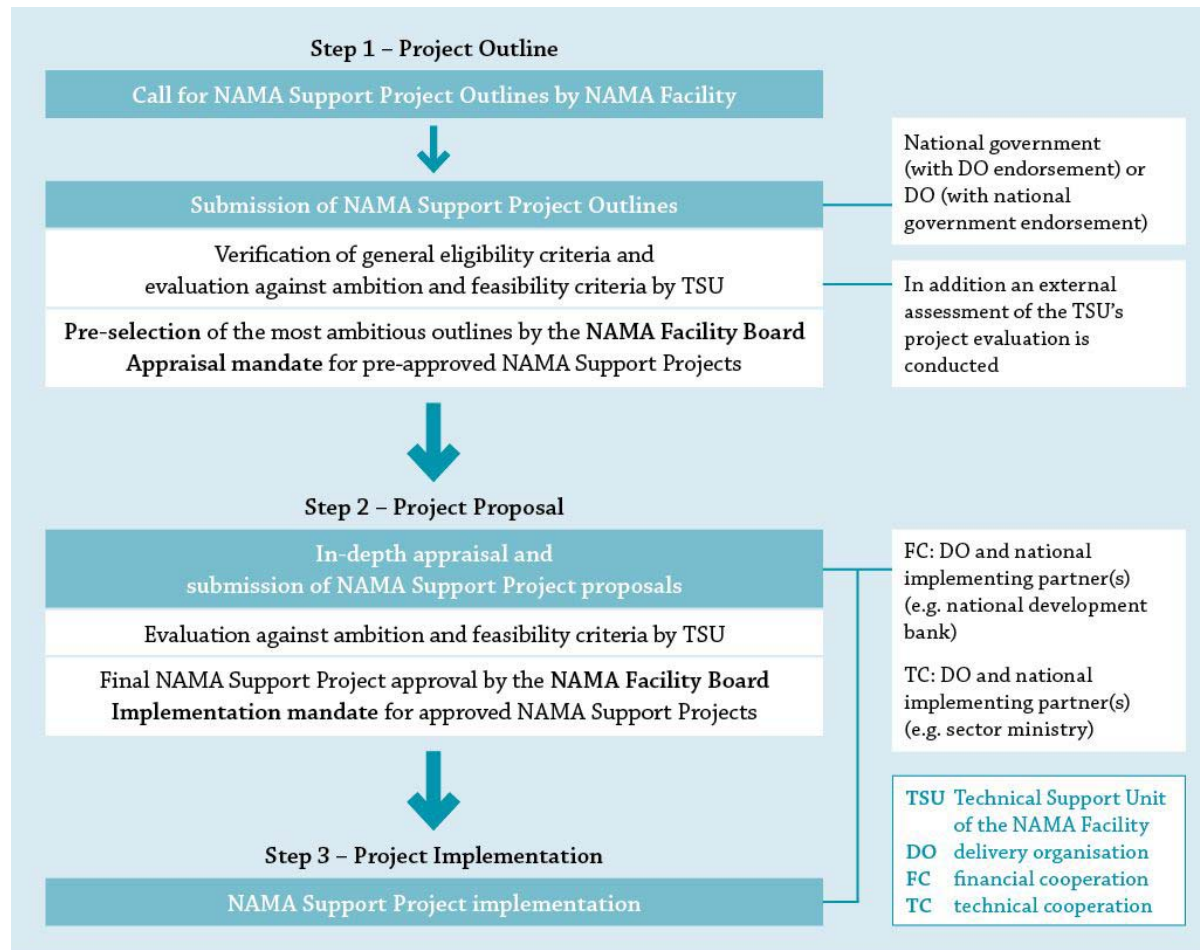
# Means of Support



# Governance of the NAMA Facility



# Project Cycle of the NAMA Facility



# Selection Criteria of the NAMA Facility

---

The selection of NAMA Support Projects is based on three sets of criteria:

- General eligibility
- Ambition
- Feasibility/readiness

**Focus:**

## Ambition Criteria of the NAMA Facility

Potential for  
transformational  
change

Mitigation  
ambition

Financial  
ambition

Sustainable  
development  
co-benefits



# Transformational change potential

---

projects are considered as conducive to transformational change if they:

- contribute to enabling either a significant evolution in terms of scope (e.g. scaling-up or replication), or enabling a faster and/or a significant shift from one state to another;
- have a catalytic effect and include mechanisms to ensure the sustainability of the impacts,
- local ownership and political will, the involvement of the private sector and the use of innovative technologies and approaches, and;
- allow for systematic learning processes.

Guiding questions are provided in the submission template.

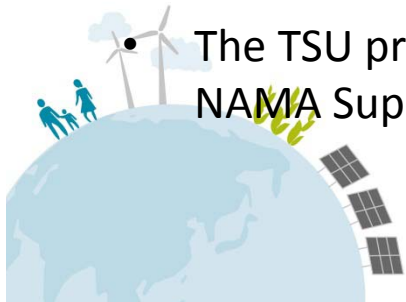




# The First Call for NAMA Support Projects

---

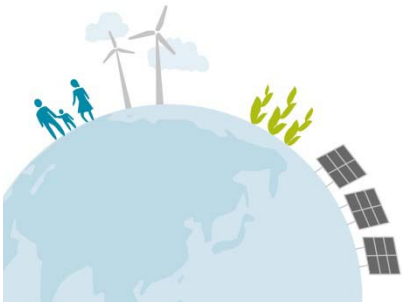
- The NAMA Facility received lots of international attention.
- During the first call, a total of 47 NAMA Support Project Outlines were received. (14 submissions from African countries)
- The bids submitted had a wide geographical and sectoral coverage.
- The following NAMA Support Project Outlines have been pre-selected for funding from the NAMA Facility.
  - Chile - Self-Supply Renewable Energy in Chile (SSRE)
  - Colombia - Transport Oriented Development NAMA
  - Costa Rica - Low Carbon Coffee NAMA
  - Indonesia - Sustainable Urban Transport Program (SUTRI NAMA)
- Pre-selected projects are currently undergoing an in-depth appraisal.
- The TSU provided feedback to all countries and delivery organisations, whose NAMA Support Project Outlines were not selected during the 1st Call



# Lessons Learned from the First Call

---

- Availability of support has encouraged the development of a significant project pipeline across different sectors and regions
- Complex sectors like transport and agriculture, which were not well suited to being tackled by CDM/JI, are now effectively addressed through the concept of NAMAs
- Project outlines generally rated higher on ambition than on feasibility criteria
- More emphasis on the elaboration of a solid project structure as well as to set up financial mechanisms to leverage additional public and private finance needed



# Lessons Learned from the First Call

---

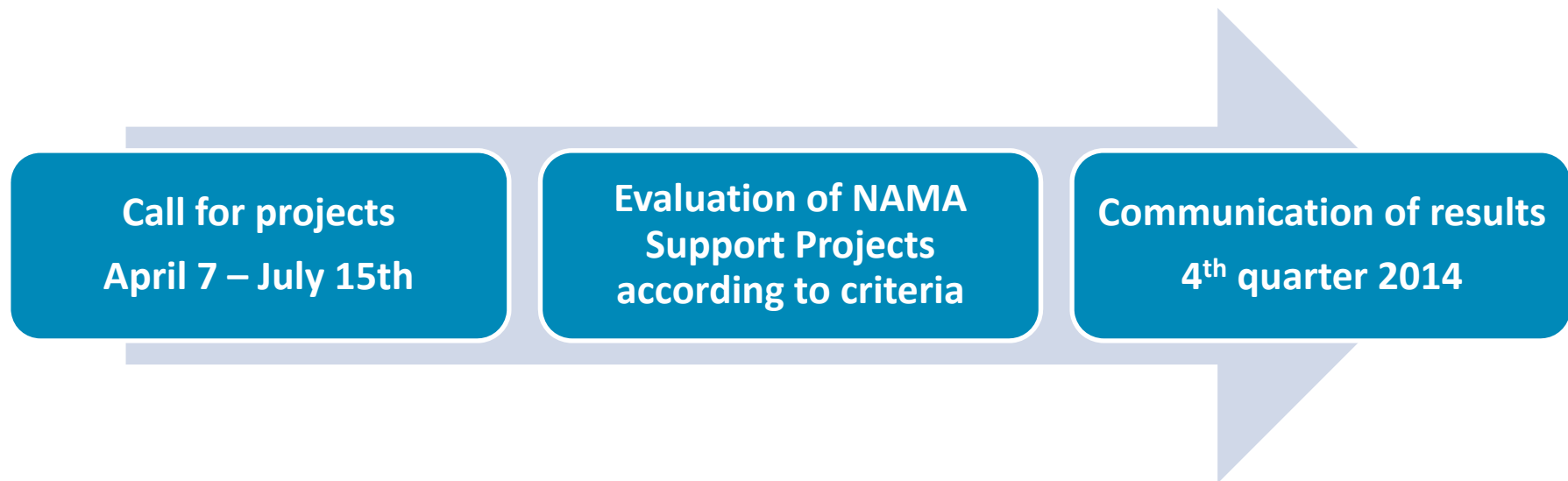
- In preparation of the second call, the processes and documents were revised based on the lessons learned:
  - General Information Document (more detailed information)
  - Outline Template (restructured, more sub-questions)
  - Additional provision of information on the website
- Learning lessons will be one of the constant areas of work of the NAMA Facility
- It is one of the objectives of the NAMA Facility to analyse the project pipeline and to provide lessons learned, allowing the development and improvement of a pipeline of ambitious, transformational NAMA Support Projects.



# Second Call for NAMA Support Projects

---

- The € 70m from the initial replenishment has been fully committed
- BMUB and DECC have committed additional funds of € 50 million in 2014
- The second call ended on July 15th 2014
- Information on the second call is available at [www.nama-facility.org](http://www.nama-facility.org) or write to [contact@nama-facility.org](mailto:contact@nama-facility.org)



## Second Call: First results

---

- 49 outlines were received
- A large variety of sectors and all geographic regions is represented
- 20 submissions from African countries
- Evaluation of submissions ongoing
  - Eligibility
  - Ambition
  - Feasibility
- The results of the second call will be communicated to the submitters of the NAMA Support Project Outlines after the conclusion of the evaluation process towards the end of the year



# Concluding remarks

---

- Better quality of submissions compared to first call
- Need to bridge gap between readiness and implementation
- Barrier and risk analysis are key
- Need for an early involvement of financial actors to insure good set-up of financial instruments



