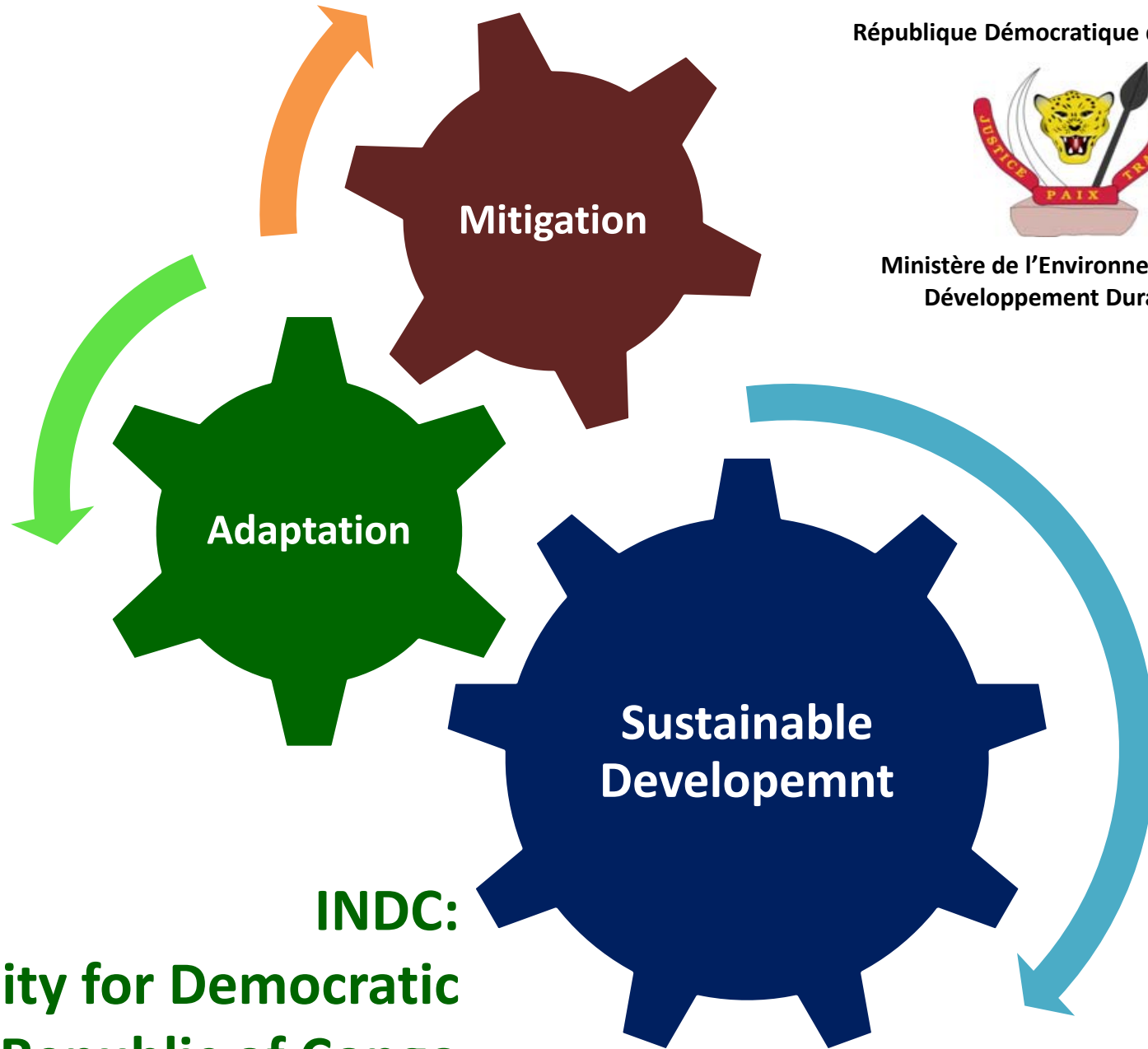


République Démocratique du Congo

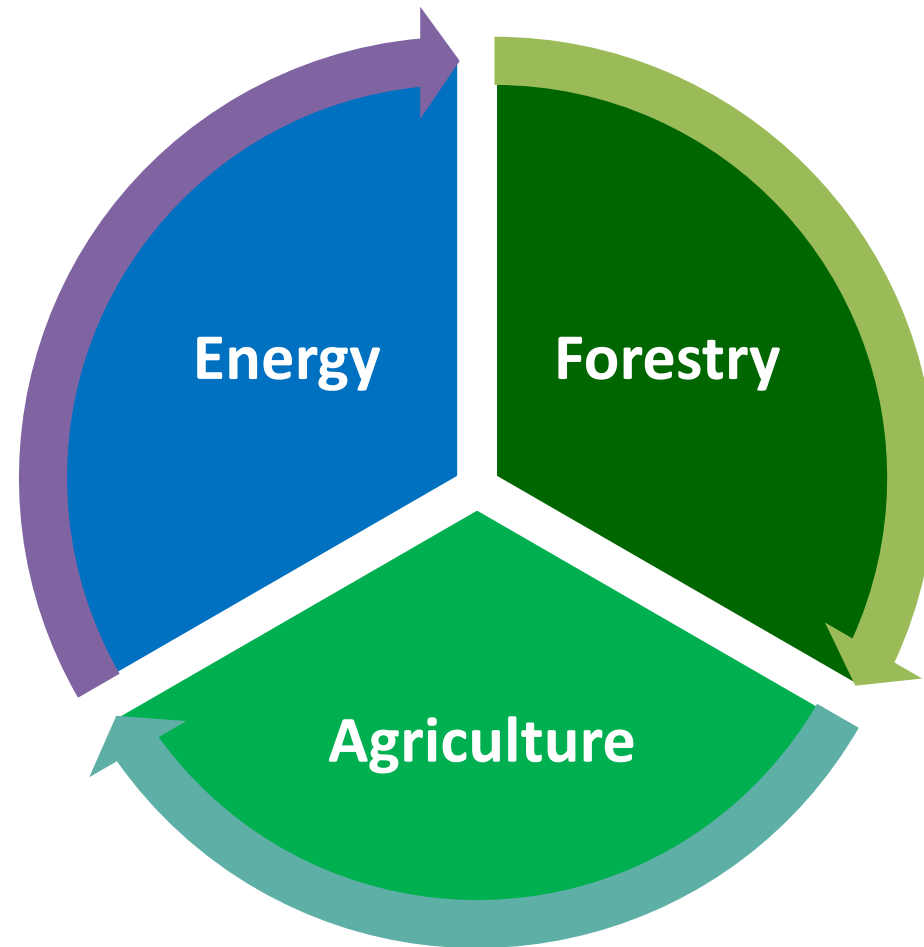


Ministère de l'Environnement et  
Développement Durable

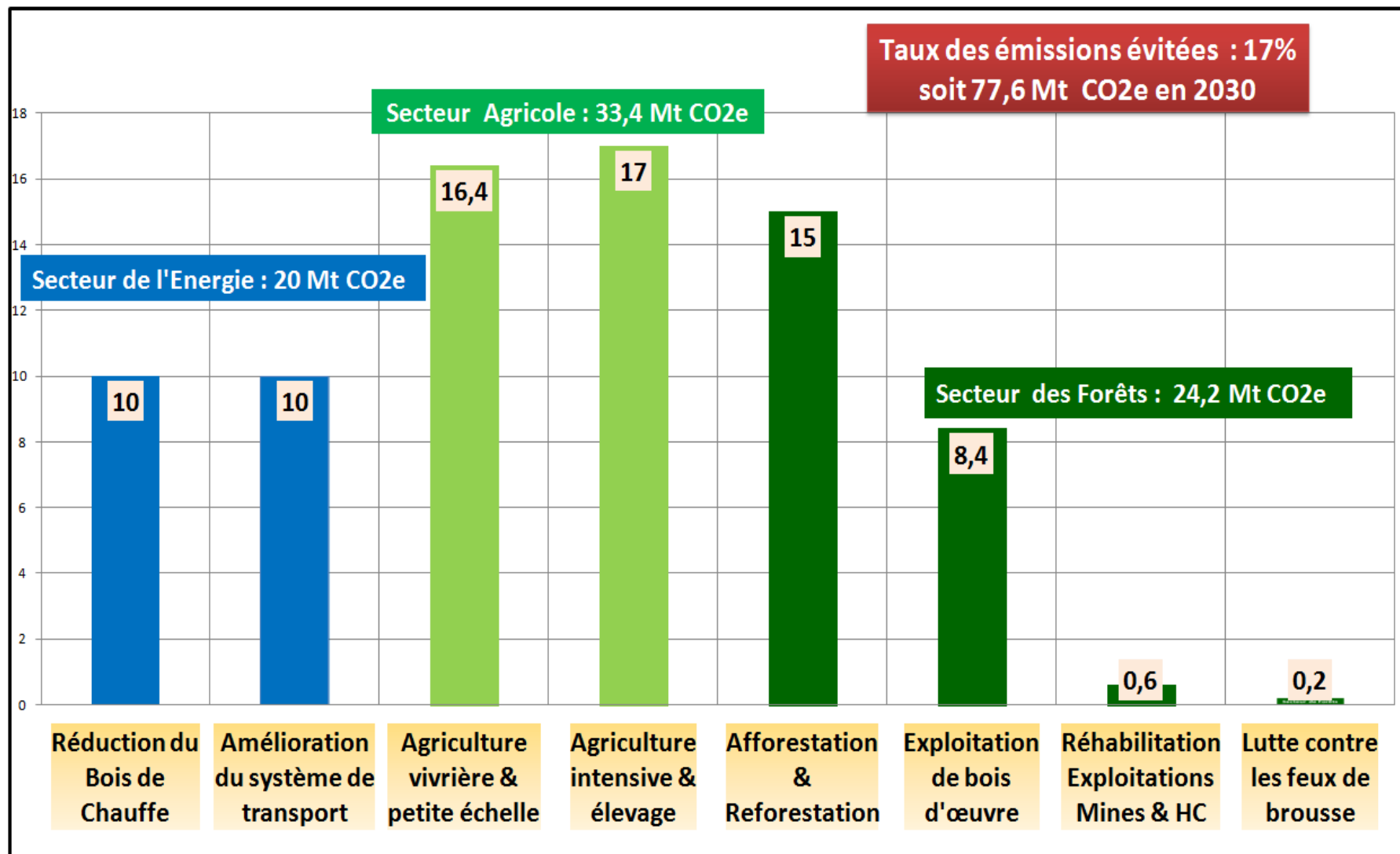


**INDC:**  
**Opportunity for Democratic  
Republic of Congo**

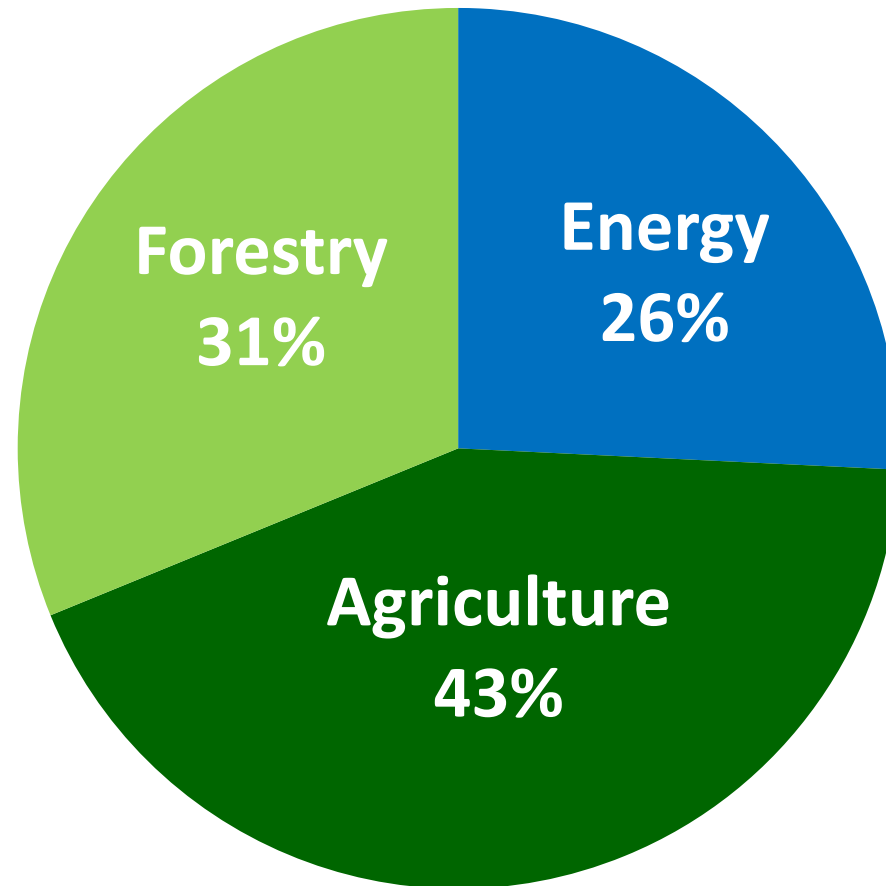
# Targeted sectors for mitigation



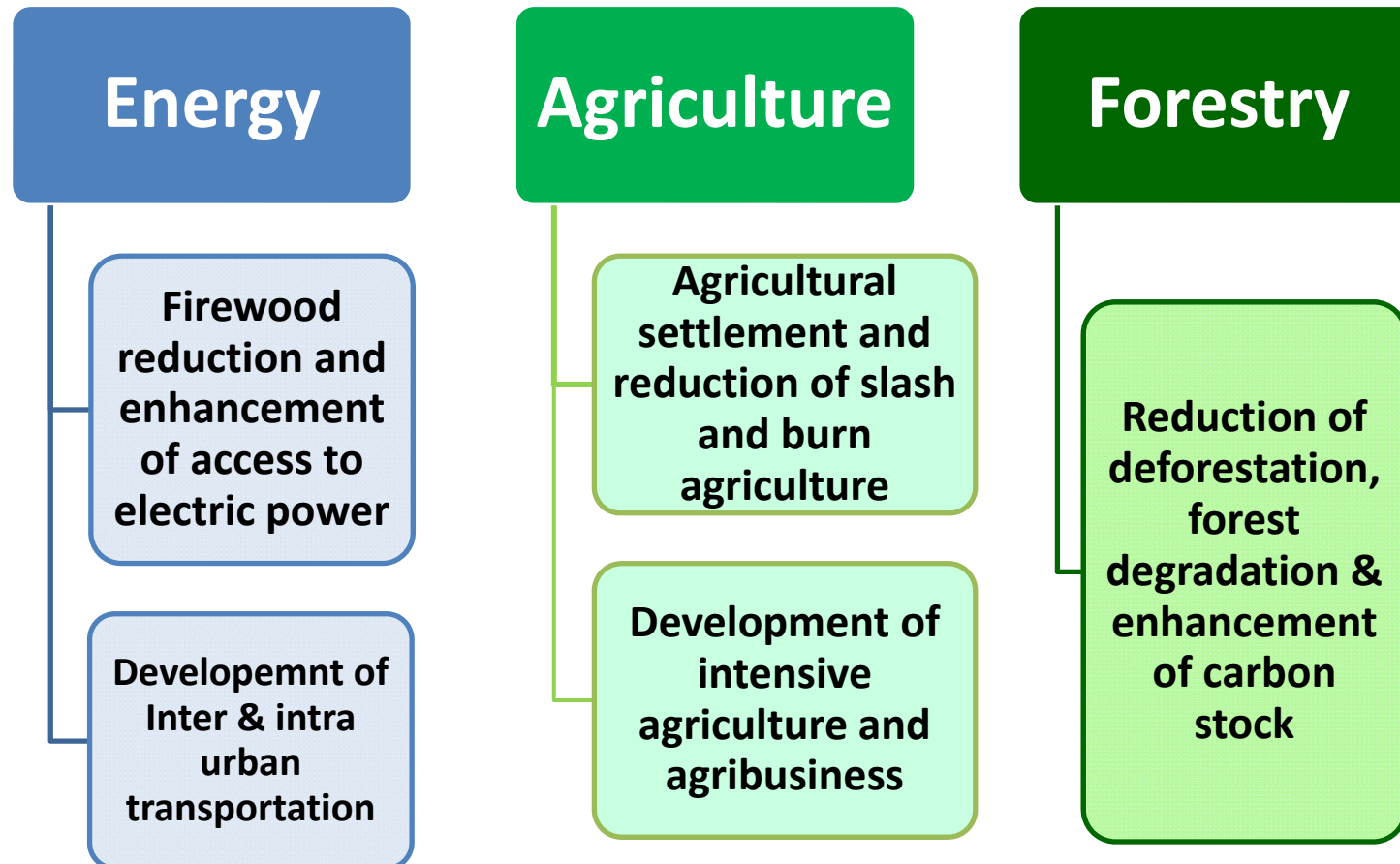
# GHGs Emission reductions of 17% below Business-as-Usual by 2030



# Sectoral distribution of GHGs reductions by 2030



# Specific objectives by Sector



Mitigation: Specific actions			GHGs Reduced (Mt CO2e)	Cost (US\$ Millions)
Energy	Fuel Wood	Rural and urban Hydro-electrification	10	2,000
		Promotion of efficient cookstoves & improvement of carbonization techniques		70
		Large-scale afforestation to cover fuelwood needs		240
	Transports	Improvement of urban and intercity transportation	10	1,600

*Production of 650 MW through small and medium scale hydroelectricity plants (8 to 10 sites with a total cost of US \$ 1 million/MW & US \$ 1.35 million for electricity distribution grids)*

- Encourage the use of improved cookstoves in 3 million households (US \$ 20 each)
- Improve current carbonization yields from 12 - 15% to 25 -30% (Training, technical and financial support)

Carry out large-scale plantations on 130,000 ha (1,800 US \$ / ha) to meet the demand for fuelwood

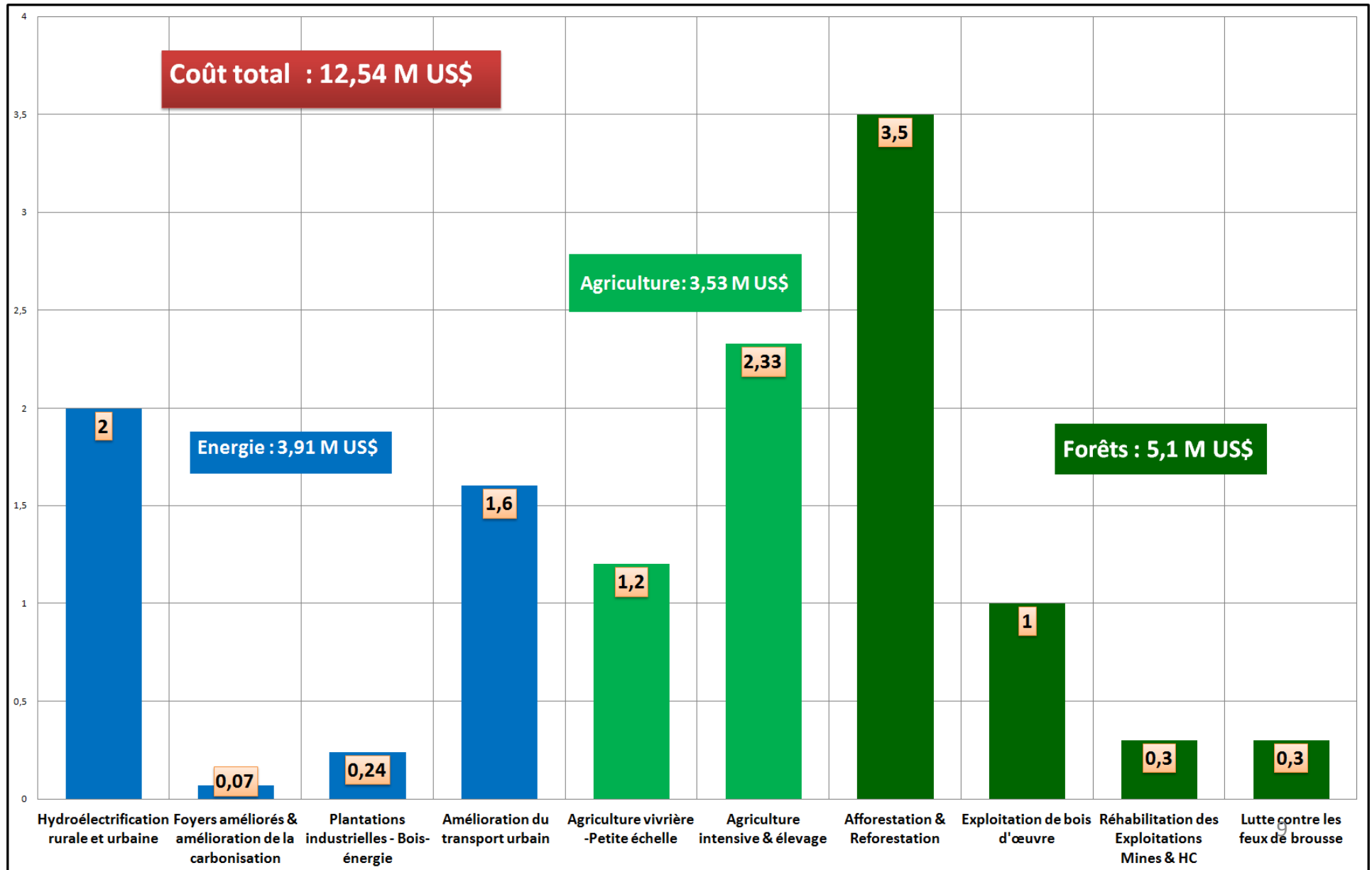
- Provide the three major urban centers (Kinshasa, Lubumbashi, Matadi) with roadways masterplans and implement these plans (US \$ 0.2 Billion)
- Improve and equip the public transportation system (bus, rail, etc.) (US \$ 0.6 Billion)
- Rehabilitate and promote multimodal transportation for goods and people (US \$ 0.8

		Mitigation: Specific actions	GHGs Avoided (Mt CO2e)	Cost (US\$ Millions)
Agriculture	Subsistence Agr. & small farms	<ul style="list-style-type: none"> <li>▪ Layout and equipment of agricultural areas (irrigation) at a rate of 1 million ha (800 US \$ / ha)</li> <li>▪ Monitoring, technical and financial support (US\$ 0.4 Million) to:               <ul style="list-style-type: none"> <li>✓ Professional organization of farmers (cooperatives), support and integrated monitoring of value chain (production, processing, marketing)</li> <li>✓ Promotion of agro-forestry and agro-sylvo-pastoral systems, plantations of vegetables and orchards (in eroded areas)</li> <li>✓ Introduction of good agricultural practices (natural fertilizers and crop protection, irrigation, soil sustainable management, etc ..)</li> <li>✓ Awareness raising/information on agriculture &amp; improved access to agriculture finance mechanisms (micro credits, banks, etc.).</li> </ul> </li> </ul>	16,4	1,200
	Intensive Agr.	<ul style="list-style-type: none"> <li>▪ Planning and equipment of 1.6 million ha of land for intensive agricultural use (1200 US \$ / ha)</li> <li>▪ Promoting the integration of livestock to agriculture for the production of fertilizer</li> <li>▪ Recovery of waste and by-products from livestock farming in the form of biogas and natural fertilizers</li> </ul>	17	2,330

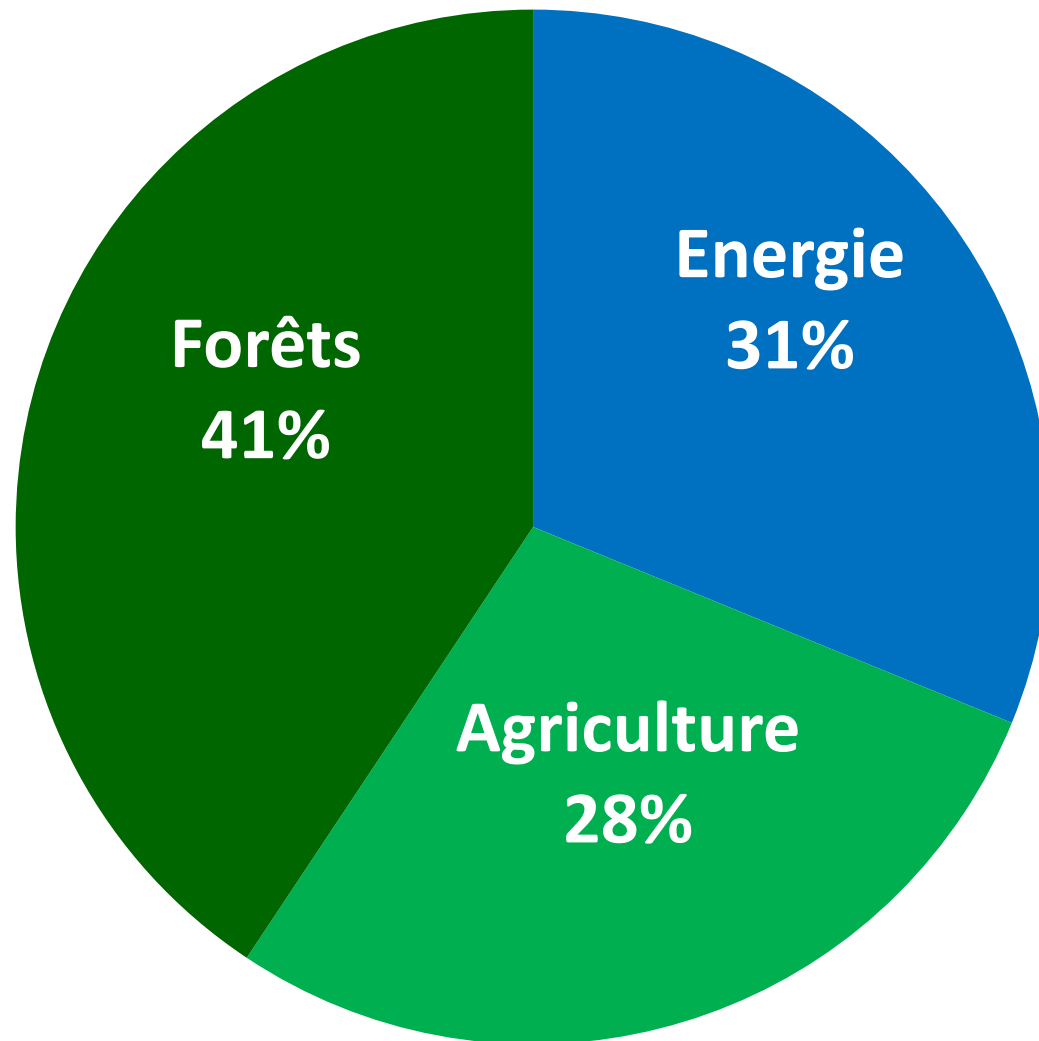
		<b>Mitigation: Specific Actions</b>	<b>GHGs Avoided (Mt CO2e)</b>	<b>Cost (US\$ Millions)</b>
<b>Forest</b>	<b>Afforestation reforestation</b>	<ul style="list-style-type: none"> <li>- Reforestation of 19 % of 4 millions ha of degraded forests or deforested land (1800 US\$/ha, that is US\$ 1.37 Billion)</li> <li>- Afforestation of 15% of 7 millions ha of marginal areas (1800 US\$/ha that is US\$ 1.9 Billion)</li> <li>- Financial incentives for reforestation and reduction of rates of deforestation and forest degradation</li> <li>- Improved management of protected areas</li> </ul>	<b>15</b>	<b>3,500</b>
	<b>Lumber</b>	<ul style="list-style-type: none"> <li>- Diversify the use of forest species and increase the volume cut per ha to ensure economic viability and environmental sustainability</li> <li>- Implement forest technical management of lower impact through training, awareness and financial incentives</li> <li>- Support the control and repression of fraud</li> </ul>	<b>8,4</b>	<b>1,000</b>
	<b>Mine &amp; oil sites rehabilitation</b>	<ul style="list-style-type: none"> <li>- Set up an information and monitoring system of mining and oil in DRC</li> <li>- Ensure monitoring and mandatory implementation of the Environmental Management Plans (EMP)</li> </ul>	<b>0,6</b>	<b>300</b>
	<b>Bush fires</b>	<ul style="list-style-type: none"> <li>- Sensitize and educate the population to the fight against bush fires</li> <li>- Establish monitoring systems and bushfire management plans</li> </ul>	<b>0,2</b>	<b>300</b>



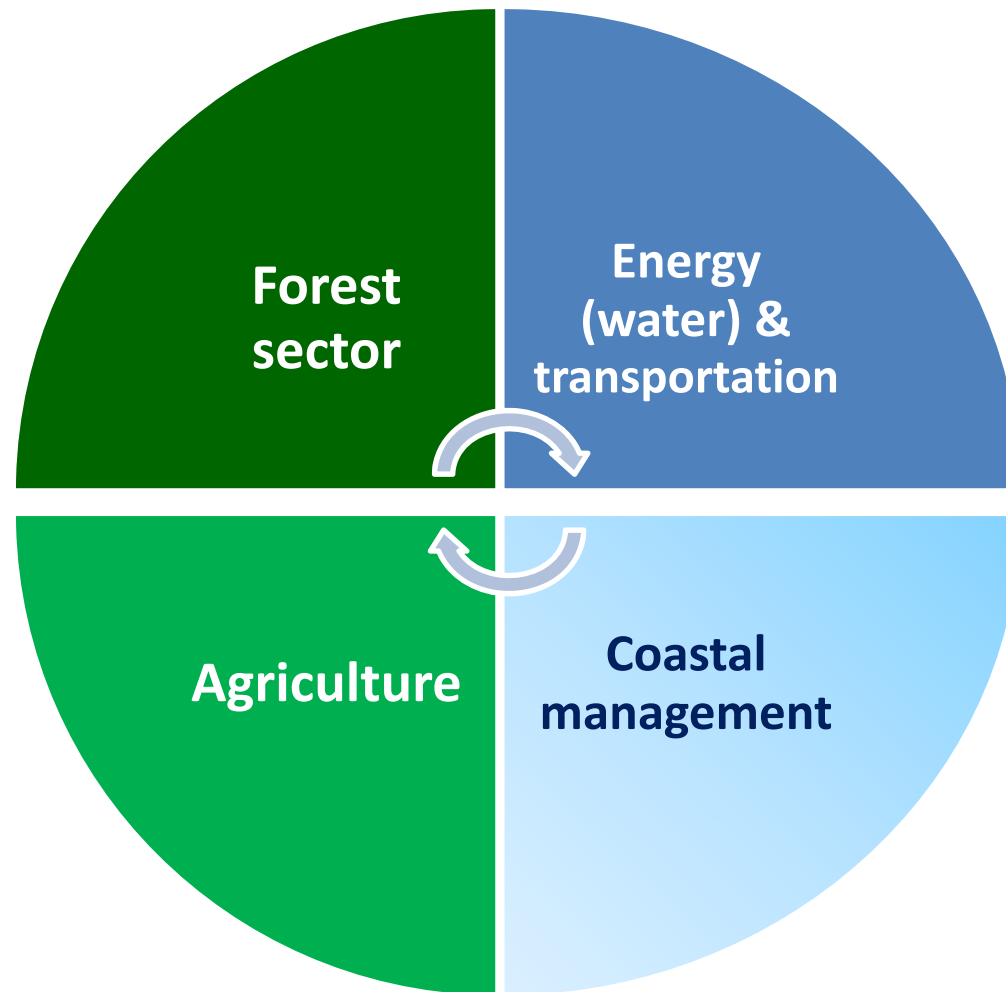
# Costs of mitigation measures



# Mitigation measures cost distribution by sector



# Adaptation : Targeted sectors



## Adaptation measures in agricultural sector : US\$ 1.56 billions

Action	Cost (US\$ Million)
▪ Resilient economic growth in the agricultural sector	392
▪ Implementation of the Adaptation component of the National Agricultural Investment Plan of the DRC	346
▪ Integration of climate change resilience into development strategies and climate risk planning	640
▪ Investment in research and innovation to strength DRC's climate resilience	135
▪ Strategic coordination of programs, plans, adaptation initiatives and knowledge management	51
▪ Integration of early warning systems in agriculture	10

**Adaptation measures in energy sector (water) & transportation : US\$ 7.35  
billions**

<b>Action</b>	<b>Cost (US\$ Million)</b>
<ul style="list-style-type: none"> <li>▪ <b>Improving access to drinking water</b></li> </ul>	<b>2,400</b>
<ul style="list-style-type: none"> <li>▪ <b>Improving access to sanitation of used water and of sustainable waste management</b></li> </ul>	<b>2,800</b>
<ul style="list-style-type: none"> <li>▪ <b>Improved access to communication (roads) and improved access to areas vulnerable to climate change</b></li> </ul>	<b>2,000</b>
<ul style="list-style-type: none"> <li>▪ <b>Improving access of poor people to health services</b></li> </ul>	<b>100</b>
<ul style="list-style-type: none"> <li>▪ <b>Strengthening of government and non-governmental institutional capacity</b></li> </ul>	<b>50</b>

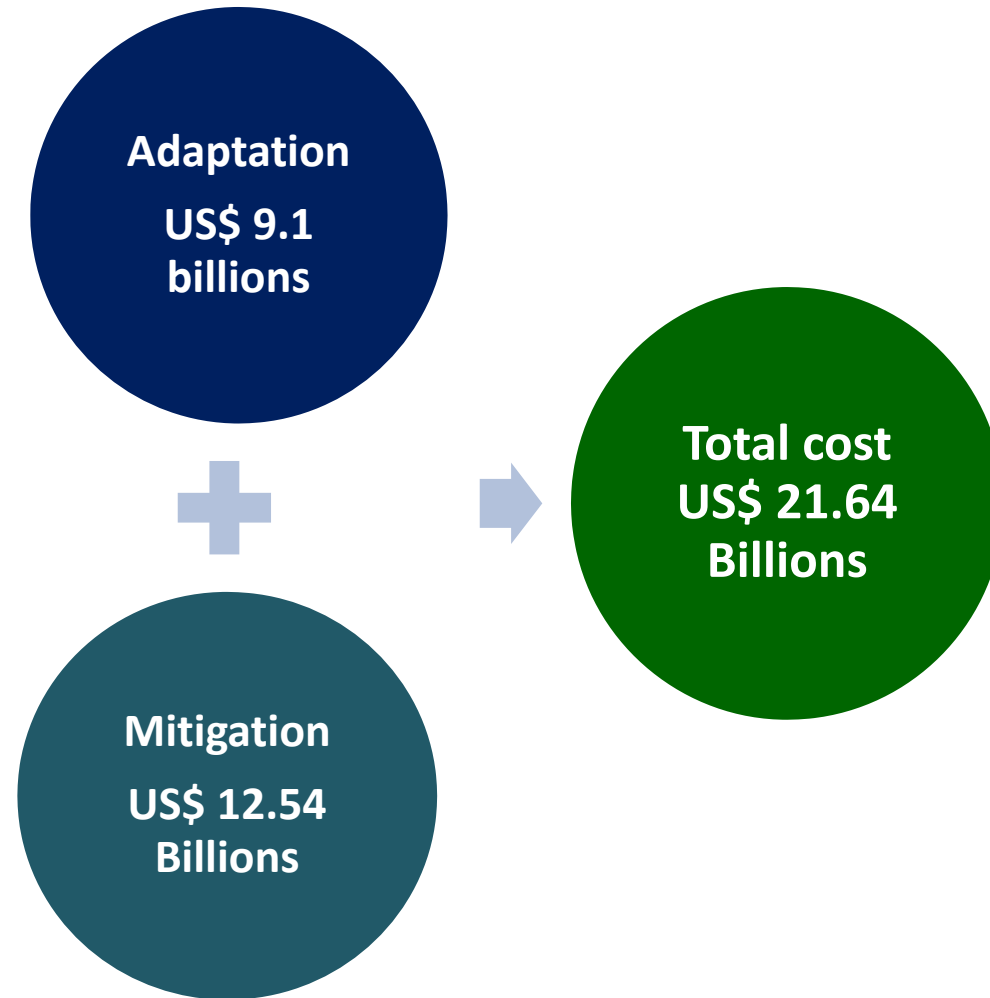
**Adaptation measures in forestry sector: US\$ 0.05 billion**

**Conservation of Biological Diversity (CBD) of  
forest ecosystems and sustainable land  
management (SLM)  
Cost : US\$ 0.05 billion**

## **Adaptation measures to protect the coastline : US\$ 0.118 Billion**

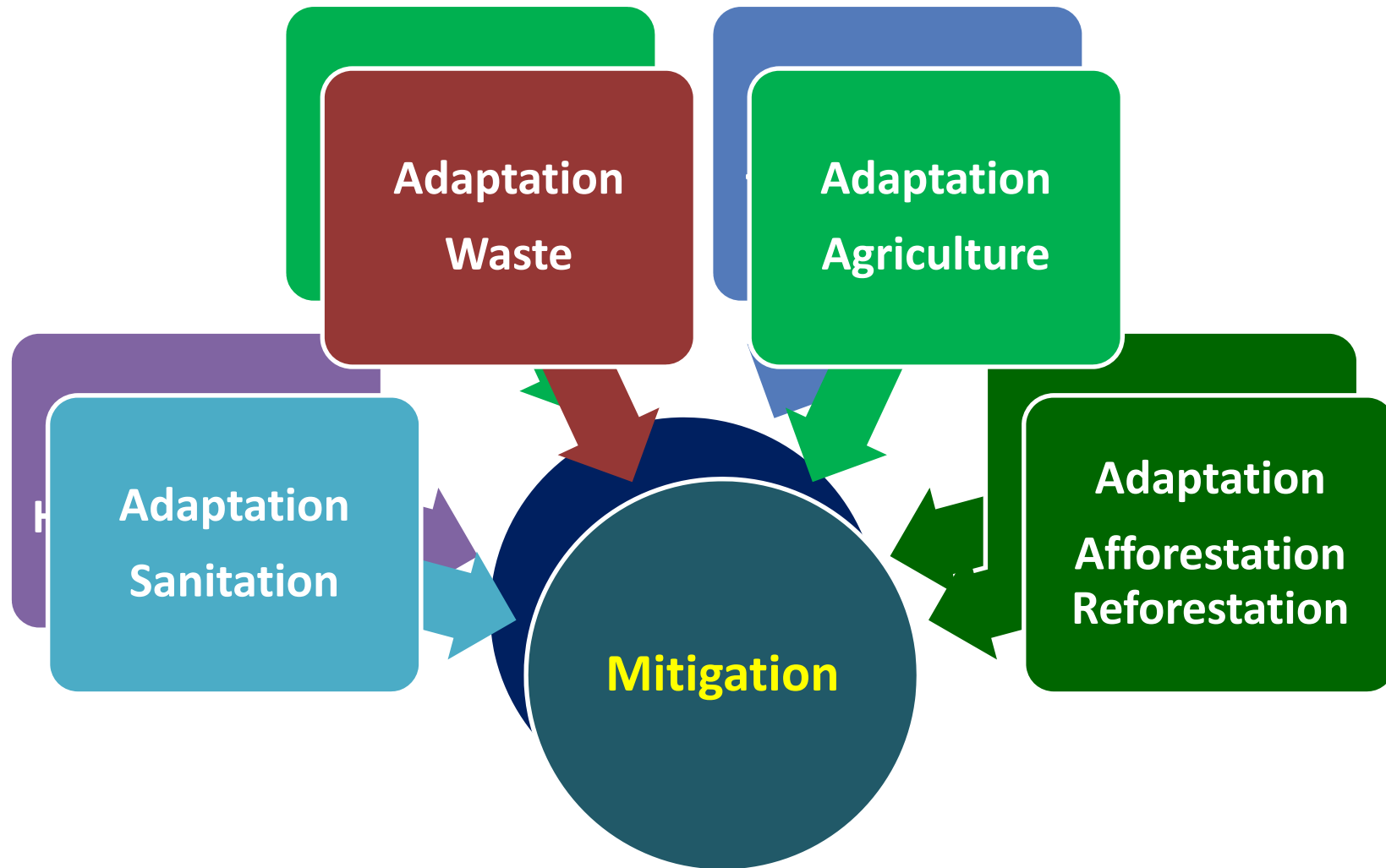
<b>Action</b>	<b>Cost (US\$ Million )</b>
▪ <b>Fight against coastal erosion: Rehabilitation and coastal management</b>	<b>58</b>
▪ <b>Support to income generating activities</b>	<b>50</b>
▪ <b>Strengthening of early warning system and capacity building in coastal areas</b>	<b>10</b>

# DRC's INDC Costs





# Co-benefits Adaptation / Mitigation



# **Thank you for your attention**

**Contact : Benjamin Toirambe  
Directeur Chef de Service  
Direction de Développement Durable  
Ministère de l'Environnement et du  
Développement Durable  
République Démocratique du Congo  
Email: [toirambe2014@gmail.com](mailto:toirambe2014@gmail.com)  
Ph.: +243999954148 / +243813079651  
Skype: bamoninga**