

# Colombia's Intended Nationally Determined Contribution (iNDC)

October 23rd, 2015



# NATIONAL CIRCUMSTANCES

## Top 40

- Contribution to GHG emissions (since 1990)
- Bigger economies



**Adaptation is a national priority**  
Considerable economic impacts

→ El Niño & La Niña

**0,46%** of global emissions



**Peace-building process**

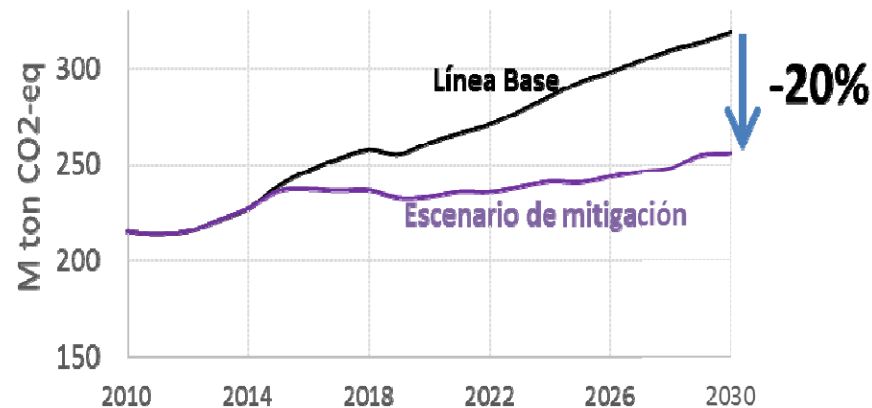


**Emerging economy,** but still important challenges in development and poverty eradication



## COLOMBIA'S iNDC (Sept.7/2015)

### MITIGATION



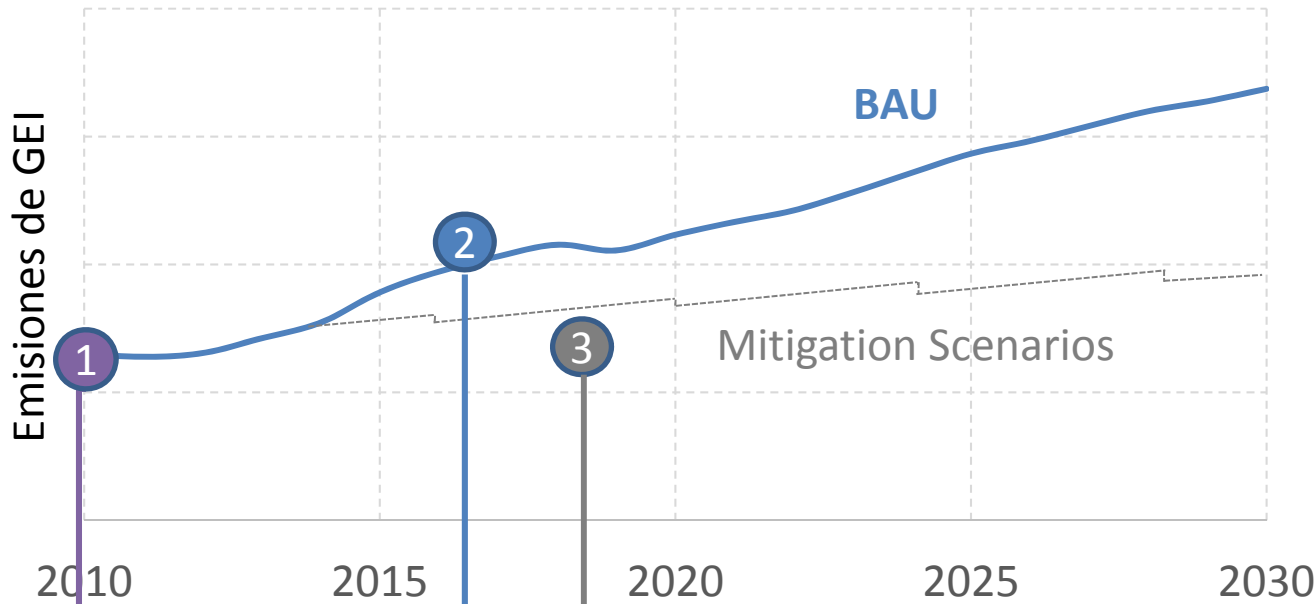
### ADAPTATION: 10 ACTIONS

- **Regional planning** (100% country)
- **National Indicators System** for Adaptation
- **Education, Training and Public Awareness** Strategy
- Focus on **River Basins, "Páramos", Protected Areas** (EbA)
- Introduce Climate Change in **sectoral planning** (emphasis on agriculture) and in Strategic National Projects

### MEANS OF IMPLEMENTATION

- **Climate Change National Policy**
- **Technology** Development and Innovation
- Capacity building
- South-South Cooperation
- **National Climate Finance**, "Green Protocol" agreement
- Coordination with local governments

# PROCESS TO CONSOLIDATE THE MITIGATION INDC



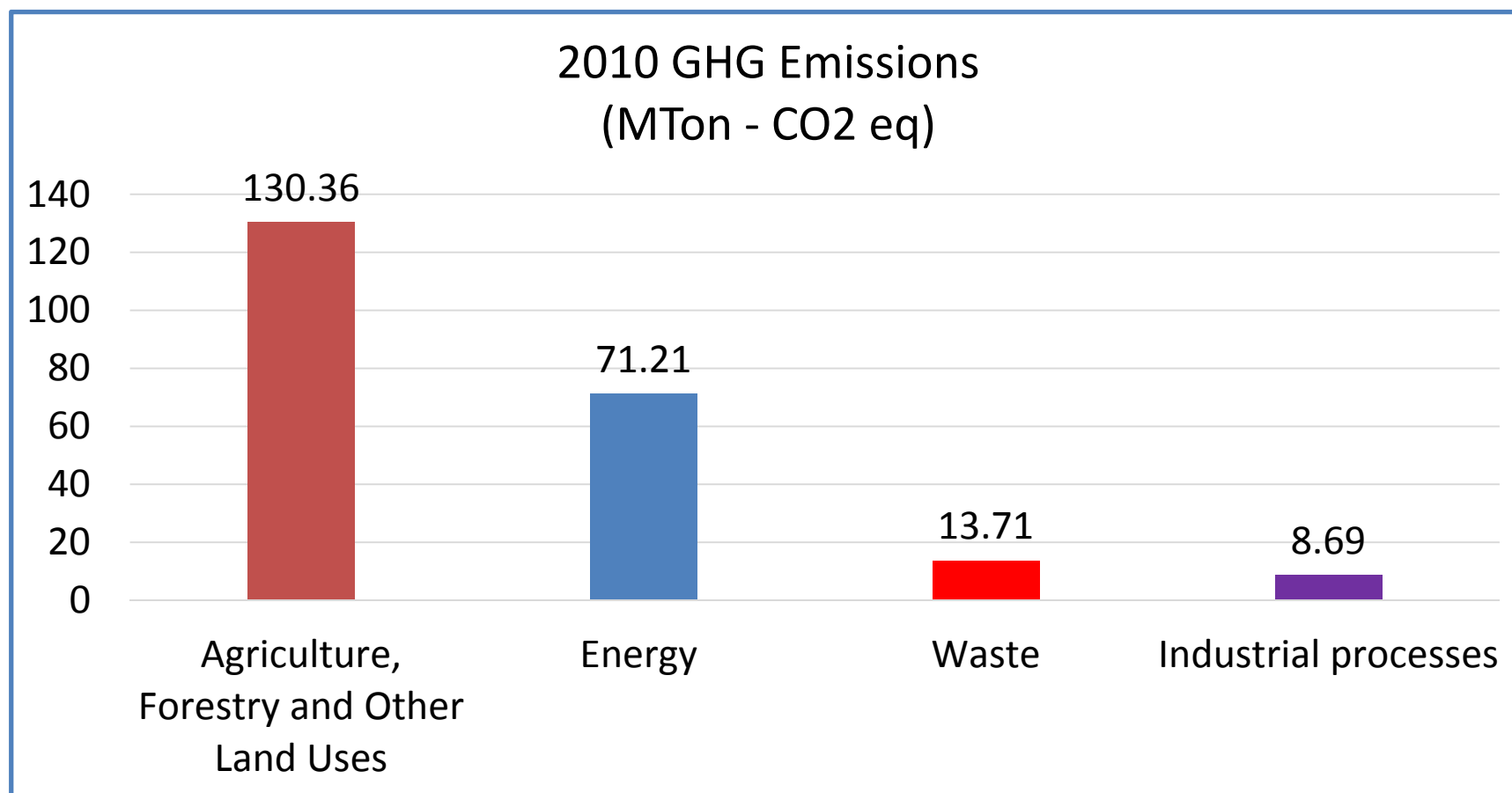
Reference point (latest GHG inventory – prepared for 1st BUR)

Emissions projections

Building mitigation scenarios



## GHG INVENTORY (Reference Point)

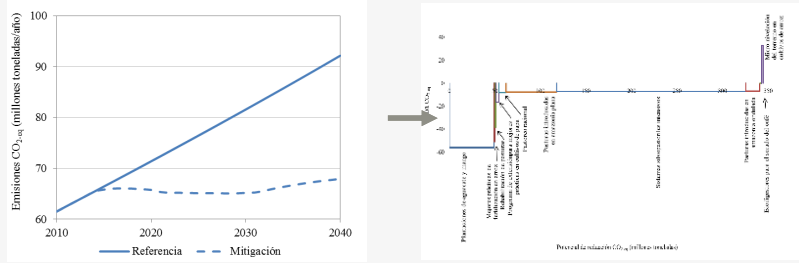


Source: Colombian Biennial Update Report, IDEAM 2015

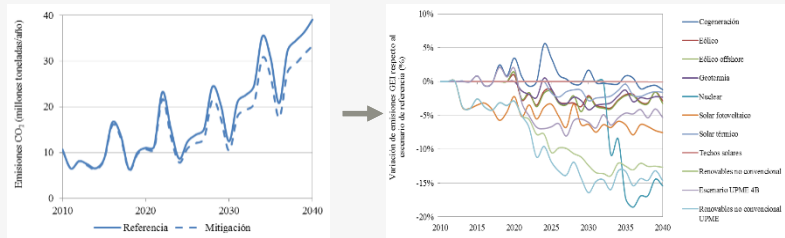


# SCENARIOS AND MACC

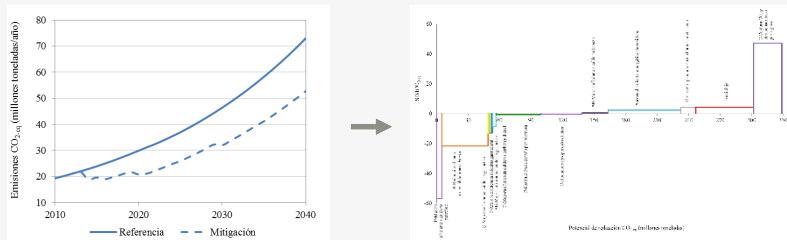
## Agriculture



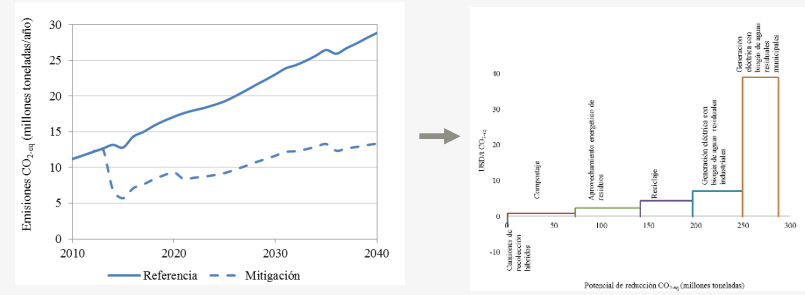
## Electricity



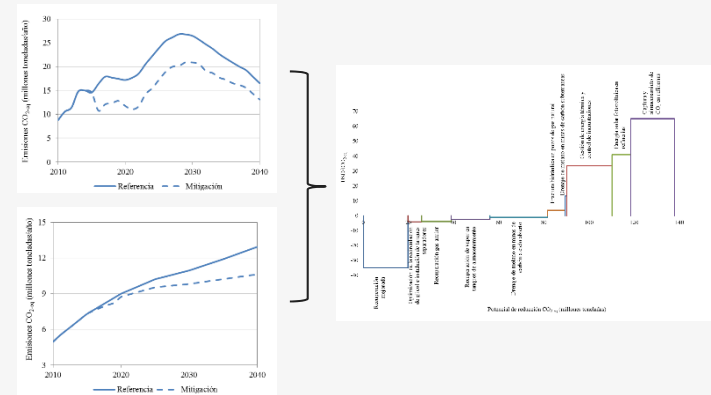
## Industry



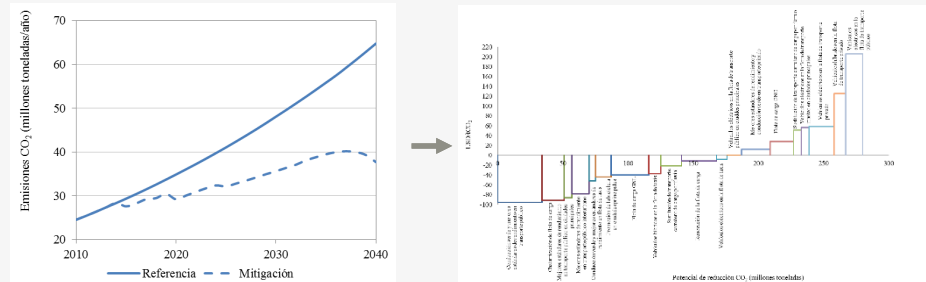
## Waste



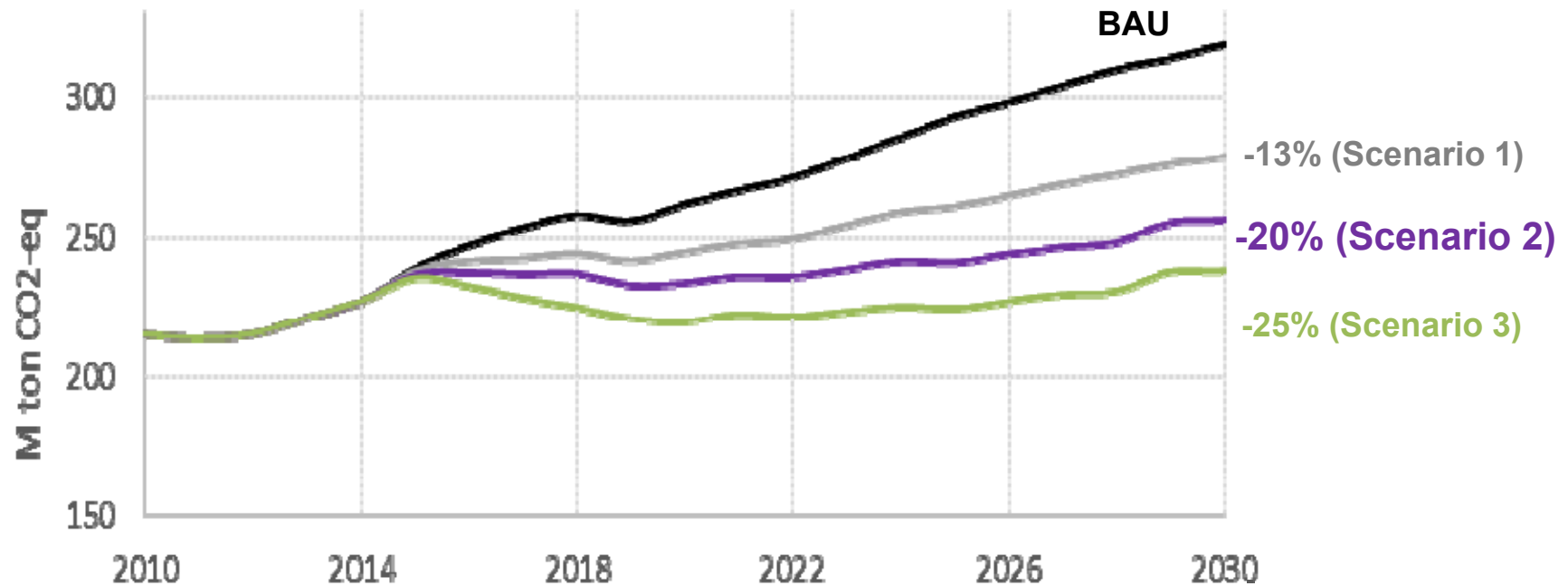
## Hydrocarbons - Coal



## Transportation



# SCENARIOS PREPARED FOR HIGH-LEVEL DECISION



## Scenario 1

- Costs: < 20USD/tonCO<sub>2</sub>eq
- Mostly in line with on going processes
- No big transformations

## Scenario 2

- Costs: < 20USD/tonCO<sub>2</sub>eq
- Implies important transformations
- Articulation and enhancing climate agenda will be required

## Scenario 3

- Includes measures with costs > 100USD/tonCO<sub>2</sub>eq
- Will require a big economic effort to overcome barriers and trade-offs

THANKS

[jsandoval@minambiente.gov.co](mailto:jsandoval@minambiente.gov.co)

