

INTRODUCING THE CTCN

THE CLIMATE TECHNOLOGY CENTRE & NETWORK

Photo © Adam Mørk / 3XN



UN City, Copenhagen, Denmark



CTCN

CLIMATE TECHNOLOGY CENTRE & NETWORK

In the face of increasing climate change, moving to low-carbon and climate-resilient development is critical. Access to new and existing technologies, for both adaptation and mitigation, must be at the very centre of this transformation.

About the CTCN

The Climate Technology Centre and Network (CTCN) is the operational arm of the UNFCCC Technology Mechanism and it is hosted and managed by UNEP in collaboration with UNIDO and with the support of 11 Centres of Excellence located in developing and developed countries. Arrangements were agreed by the UNFCCC and UNEP's Governing Council in early 2013 to make the CTCN operational by the end of the year. The CTCN is located in Copenhagen, Denmark.

CTCN Mission

- To build or strengthen the capacity of developing countries to identify technology needs
- To facilitate the preparation and implementation of technology projects and strategies to support action on mitigation and adaptation
- To enhance low-emission and climate-resilient development

CTCN work

The CTCN will work to reduce the risks and costs of technology transfer by helping developing countries make informed decisions about mitigation and adaptation technologies that suit their needs. It will promote accelerated, diversified and scaled-up transfer of environmentally sound technologies (EST) for climate change mitigation and adaptation, consistent with the national socio-economic and sustainable development priorities of the requesting countries.

CTCN functions

The CTCN has three core functions. It will:

- Manage and respond to requests from developing countries
- Foster collaboration and access to information and knowledge to accelerate technology transfer
- Strengthen networks, partnerships and capacity building for climate technology transfer

CTCN structure

The CTCN, guided by an Advisory Board, is responsible for the initial appraisal, refinement, and technical support of requests received through Nationally Designated Entities (NDEs).

Delivery of CTCN services will be facilitated through a wide and diverse Network of international, regional and national institutions that can respond effectively and efficiently to countries' requests. The establishment of the network will begin in the second half of 2013.

CTCN delivery approach

Submission and Response Plan

- Submission of request by NDE
- Logging and initial screening
- Refining of request and preparation of response plan
- Review and approval of request

Response

- Delivery of initial quick response assistance from expert team
- Tendering of project to the Network and selection of network member to perform the work
- Implementation of agreed support from network member

Reporting and Evaluation

- CTC progress reviews
- Summary report on results and impacts
- Analysis and sharing of experiences through peer forums and knowledge management
- Reporting outcomes publicly and to the Advisory Board

CTCN services

Developing countries will be able to access the services of the CTCN through their NDEs, which will serve as the link between the CTCN and local stakeholders, including the private sector and government institutions.

Based on country requests, and using the delivery approach described in the box below, the CTCN will, for example:

- Support countries in the preparation of their technology projects and strategies
- Assist in identifying technology needs and options that are likely to have a high impact on climate change adaptation and mitigation, given national circumstances
- Advise on policies and measures for the uptake of climate technologies
- Provide tailored training and capacity building programmes
- Match needs to available support

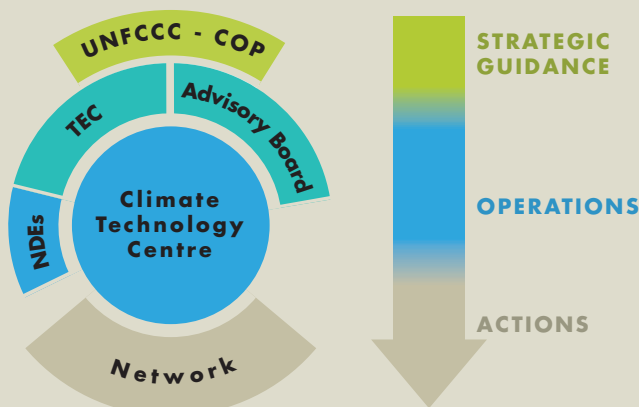
The CTCN is setting up a **Knowledge Management System (KMS)** that will promote free exchange of global, regional and national data on adaptation and mitigation technology performance and costs, together with lessons learned, best practices and online orientation.

Establishing cooperation and building partnerships

The CTCN is now establishing close cooperation and partnerships with various stakeholders, such as:

- International/regional institutions with relevant expertise to facilitate knowledge sharing, foster South-South and North-South cooperation, and provide technical and policy advisory services
- Private-sector associations and companies to promote investments and develop market opportunities
- Development partners who can support national priority programmes, including the implementation of strategies identified with the assistance of the CTCN

Financial support for the work of the CTCN has come from various donors, including from the governments of Canada, Denmark, Japan, Sweden, Norway, Switzerland, the United States and the European Commission.



MORE INFORMATION

THE CLIMATE TECHNOLOGY CENTRE & NETWORK

Email: ctcn@unep.org

UNEP web page: www.unep.org/climatechange/ctcn

The CTCN is a consortium led by the United Nations Environment Programme (UNEP) together with the United Nations Industrial Development Organization (UNIDO) and includes:

- Asian Institute of Technology — AIT (Thailand)
- Bariloche Foundation (Argentina)
- Council for Scientific and Industrial Research — CSIR (South Africa)
- Deutsche Gesellschaft für Internationale Zusammenarbeit — GIZ (Germany)
- Environment and Development Action in the Third World — ENDA (Senegal)
- Energy Research Centre of the Netherlands — ECN (The Netherlands)
- National Renewable Energy Laboratory — NREL (United States)
- The Energy and Resources Institute — TERI (India)
- Tropical Agricultural Research and Higher Education Centre — CATIE (Costa Rica)
- UNEP Risø Centre — URC (Denmark)
- World Agroforestry Centre — ICRAF (Kenya)

The CTCN is located in Copenhagen, Denmark.



CTCN

CLIMATE TECHNOLOGY CENTRE & NETWORK