

# the NAMA registry

UNFCCC secretariat



## Background

---

- **COP 16 sets up a registry to**
  - a) Record NAMAs seeking international support
  - b) Record support available and support provided
  - c) Facilitate matching of NAMAs with support
  - d) “Recognize” other NAMAs in a separate section
- **COP 17**
  - a) Registry as a dynamic web-based platform
  - b) Matching through the provision of information
  - c) Requests the secretariat to develop a prototype

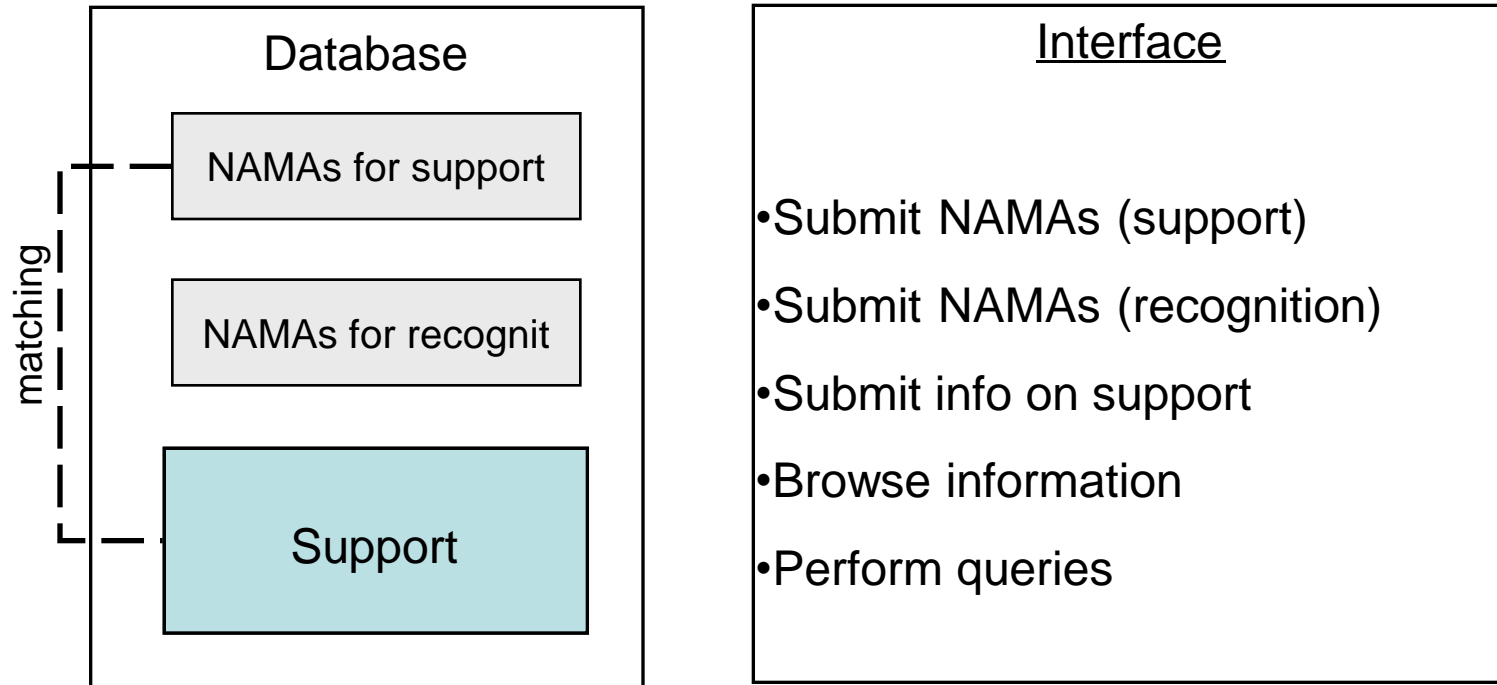


- A platform to help countries prepare and implement individual NAMAs:
  - a) Record NAMAs and information on support available
  - b) Facilitate matching
  - c) Recognize other NAMAs
- Operating prototype to be deployed in April
  - a) Not open to the public, countries should request access rights
  - b) Comments for the final registry to be received by July the latest
  - c) Open platform to be deployed in October



# Elements of the registry

---



# The NAMA registry looks

<p>NAMA seeking support for preparation NAMA seeking support for implementation NAMA for recognition</p> <p><b>Create ...</b></p>	<p>Pending submissions My recorded NAMAs</p> <p><b>Review ...</b></p>
<p>Country pages NAMAs seeking support for preparation NAMAs seeking support for implementation NAMAs for recognition Information on support available</p> <p><b>Browse ...</b></p>	<input type="text" value="Search this site..."/> <p><b>Advanced search</b></p> <p><b>Search ...</b></p>

ast Modified NAMAs

<u>Title</u>	<u>Country</u>	<u>Title</u>
ads	Afghanistan	BNDES Amazon F
Clean Production Agreements in Chile	Chile	Multilateral Invest
First introduction of Photovoltaic Solar Energy in the national electrical grid.	Uruguay	GEF Small grants
Implementation of a National Forestry and Climate Change Strategy, including the development and implementation of a Platform for the Generation and Trading of Forest Carbon Credits.	Chile	Carbon Market Ini
NAMA in the Forestry sector	Mali	
Sustainable production with low-emission technologies in agriculture and agroindustry production chains.	Uruguay	
	Mali	
LNG Terminal with regasification capacity of 10.000.000m3/d of natural gas with possible expansion to 15.000.000m3/d	Uruguay	
Supporting Implementation of 100% Renewable Electricity by 2020	Cook	



## NAMA Seeking Support for Implementation

A Overview	▾
B National Implementing entity	▾
C Expected timeframe for the preparation of the mitigation action	▾
D Currency	▾
E Cost	▾
<b>F Support required for the implementation the mitigation action</b>	▾
G Estimated emission reductions	▾
H Other indicators	▾
I Other relevant information	▾
J Relevant National Policies strategies, plans and programmes and/or other mitigation action	▾
K Attachments	▾



## Information on Support Available

A Source of Support	▾
B Organization channelling the resources	▾
C Currency	▾
D Support available	▾
E Types of action that may be supported	▾
F Process for the provision of support	▾
G Information on support	▾
H Attachments	▾

Cancel

Submit



## NAMA Seeking Support for Implementation

A Overview



B National Implementing entity



C Expected timeframe for the preparation of the mitigation action



D Currency



E Cost



F Support required for the implementation the mitigation action



F.1.1 Amount of Financial support

Conversion to USD: 0

F.1.2 Type of required Financial support

Grant

Guarantee

Loan (sovereign)

Equity

Concessional loan

FDI

Loan (private)

Carbon finance

Other

F.1.3 Comments on Financial support

F.2.1 Amount of Technological support


F.2.2 Comments on Technological support











# My Recorded NAMAs

## NAMA seeking support for preparation

 [Export to Excel](#)


<u>Id</u>	<u>Title</u>		
<input type="text" value="Search..."/>	<input type="text" value="Search..."/>		
NS-12	test ken 12. 4. 1		
NS-14	test kenya milan 2		
NS-19	NAMA for UWE		

## NAMA seeking support for implementation

 [Export to Excel](#)

<u>Id</u>	<u>Title</u>		
<input type="text" value="Search..."/>	<input type="text" value="Search..."/>		
NS-35	UAT test: RBT 2nd Implementation as Nama developer		

## Other NAMA, for recognition

 [Export to Excel](#)

<u>Id</u>	<u>Title</u>		
<input type="text" value="Search..."/>	<input type="text" value="Search..."/>		

No records to display.





## UAT test: RBT 2nd Implementation as Nama developer

### Kenya

- A Overview
- B National Implementing entity
- C Expected timeframe for the implementation of the mitigation action
- D Currency
- E Cost
- F Support required for the implementation the mitigation action
- G Estimated emission reductions
- H Other indicators
- I Other relevant information
- J Relevant National Policies strategies, plans and programmes and/or other mitigation action
- K Attachments
- L Support received

Spell Check Cancel Save Submit

NAMA seeking support

Re-Submit Identified support received Mark as not looking for support



# UAT test: RBT 2nd Implementation as Nama developer

## Kenya

- A Overview
- B National Implementing entity
- C Expected timeframe for the implementation of the mitigation action
- D Currency
- E Cost
- F Support required for the implementation the mitigation action
- G Estimated emission reductions
- H Other indicators
- I Other relevant information
- J Relevant National Policies strategies, plans and programmes and/or other mitigation action
- K Attachments
- L Support received

Spell Check   Cancel   Save   Submit

NAMA Seeking support

Selected support

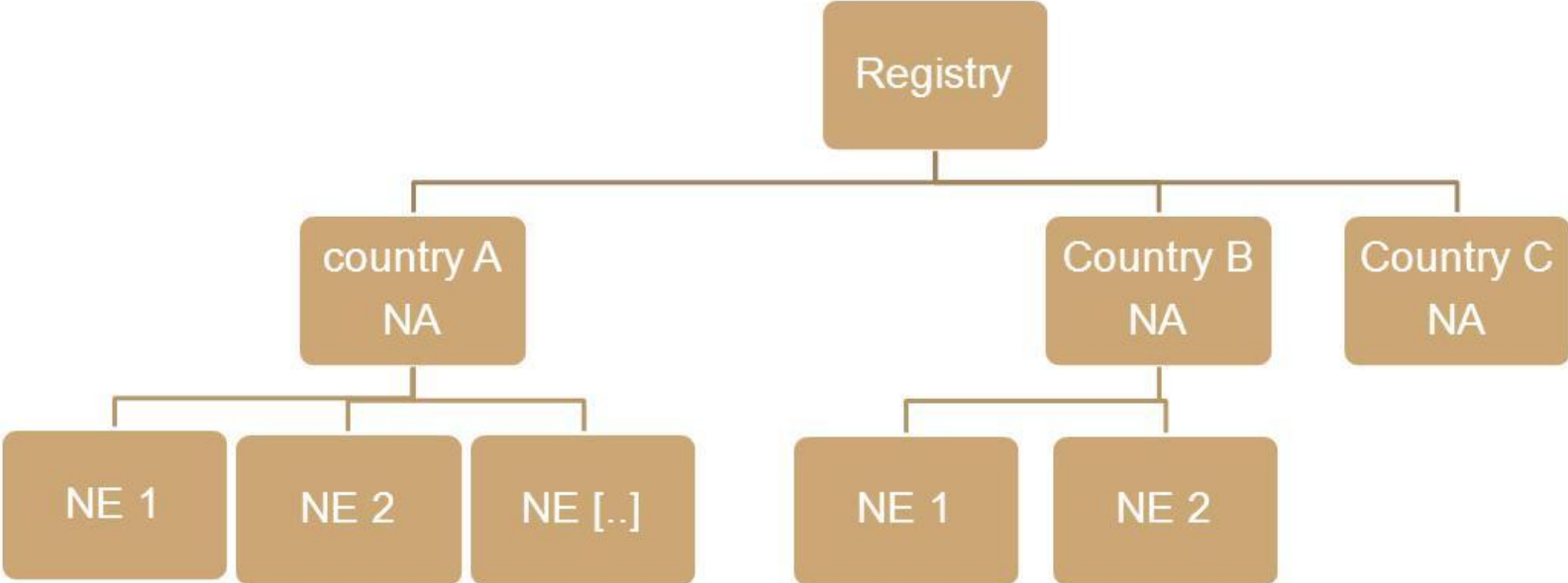
 

Support amount

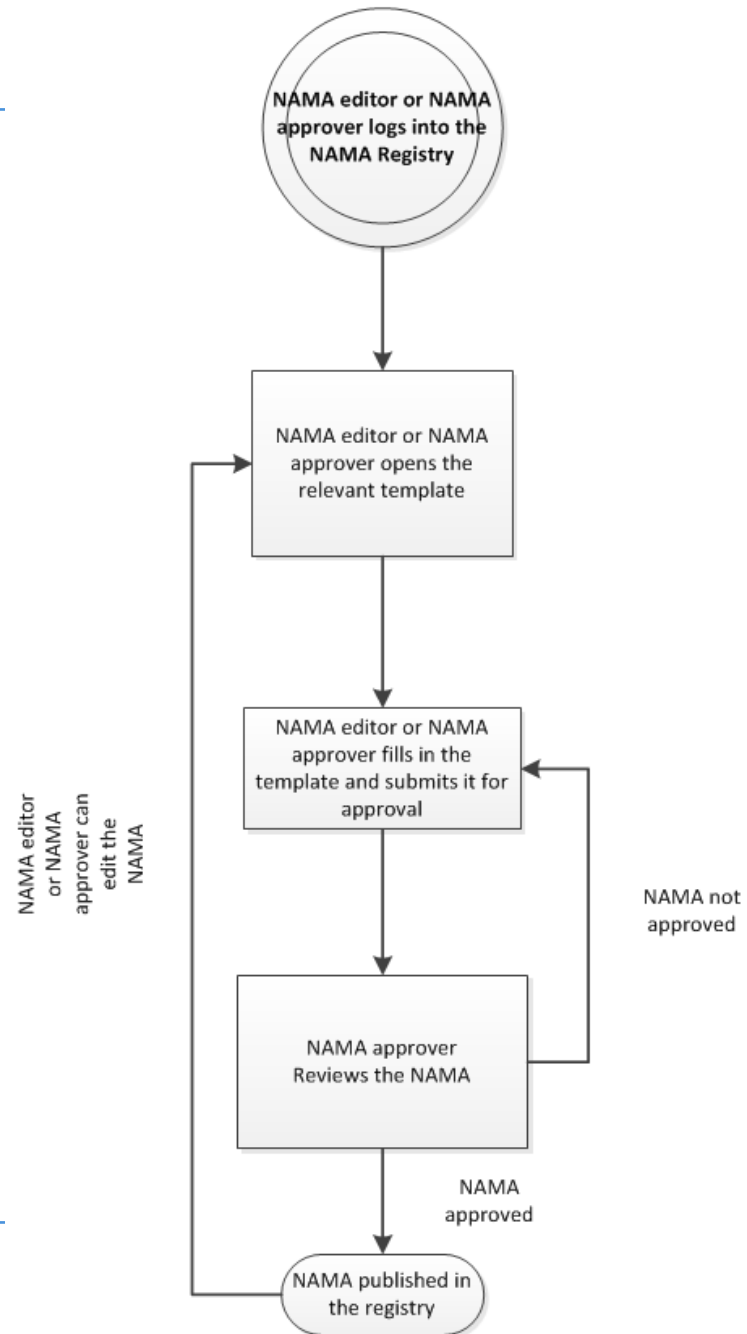


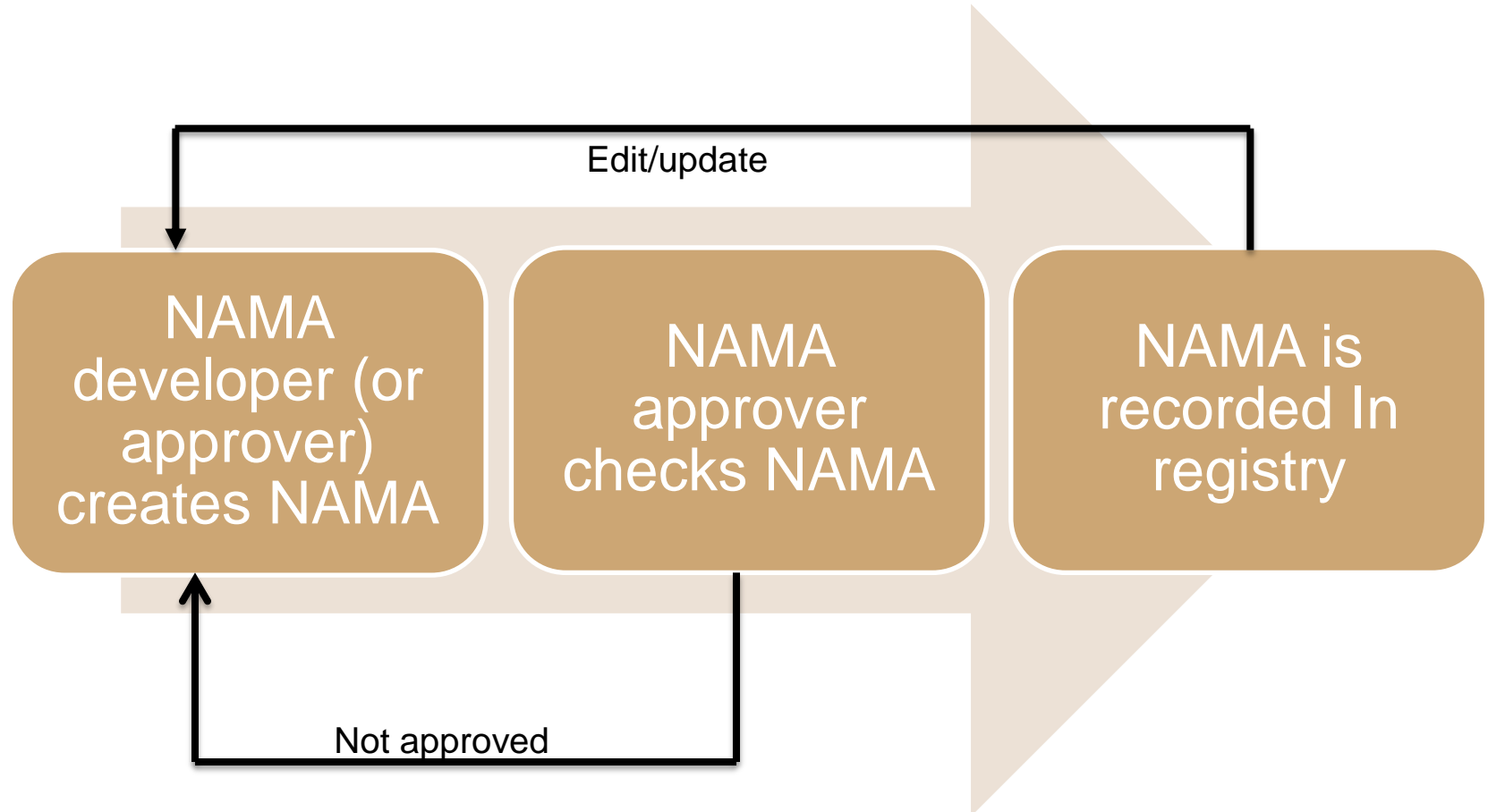
- NAMAs require central approval:
  - **NAMA approvers (NA)**: full access to country registry (e.g. Focal point)
  - **NAMA developers (NE)**: create NAMAs, edit/delete their NAMAs, search queries (e.g. project formulators)
- Support does not require central approval
  - **Support editors**: create support entries, edit/delete their entries, search queries
  - Actors: government agencies, banks, foundations, private sector





## Workflow: creating and editing NAMAs





a) Manual

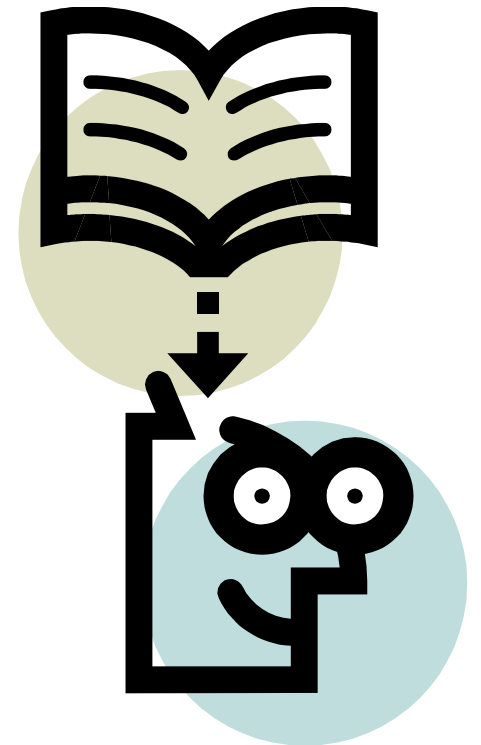
b) NAMA Approver's forum

c) NAMA team and NAMA partnership





- Part I: Design and functioning of the registry (mechanics)”:
  - a) access and user roles;
  - b) The database and its sections;
  - c) Workflows
- Part II: how to fill in the templates
  - a) NAMAs
  - b) Support



- Participation is voluntary.
- Not a requirement to receive or provide support;
- Not an obligation to provide support or a guarantee that support will be provided.
- Not a system for formally reporting on proposed actions or their results.
- No requirements to verify the information. Responsibility lies within NAMA approver/support editor



- a) What role does the registry play in the promoting and facilitating the preparation and implementation of NAMAs?
- b) What arrangements are required for its operation?
- c) How could the registry meet its objective of facilitating matching of NAMAs with support available?

