



Food and Agriculture Organization  
of the United Nations

# FAO learning tool on NAMAs in the agriculture, forestry and other land use sector

**Martial Bernoux**

**Armine Avagyan, Kaisa Karttunen, Janie Rioux and Maria Nuutinen**

Mitigation of Climate Change in Agriculture (MICCA) Programme  
of the  
Food and Agriculture Organization of the United Nations (FAO)

**UNFCCC Side event on “Making the best use of the NAMA Registry”  
2 December, 2015**



# Climate change affects the four dimensions of food security

- food availability,
- food accessibility,
- the stability of food supply, and
- the ability of consumers to adequately utilize food including food safety and nutrition.

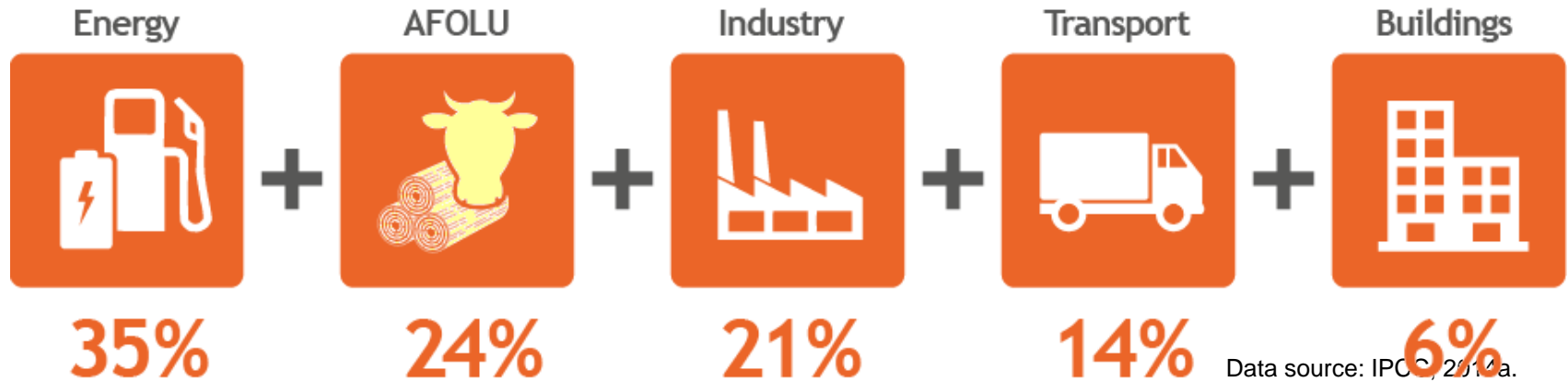


**795 million people are chronically undernourished – about one in nine of the world's population (FAO *et al.*, 2015).**

Smallholder farmers, forest dwellers, herders and fishers will be the most affected by climate change because of their limited capacity to adapt to its impacts.



# Agriculture, forestry and other land use (AFOLU) is the largest emitting sector after the energy sector



Agriculture alone contributes **10–12 percent of global GHG emissions.**

**2.7** billion tonnes  
CO<sub>2</sub> eq

1961

**5.4**  
billion tonnes  
CO<sub>2</sub> eq

2012

Source: FAOSTAT, 2014.



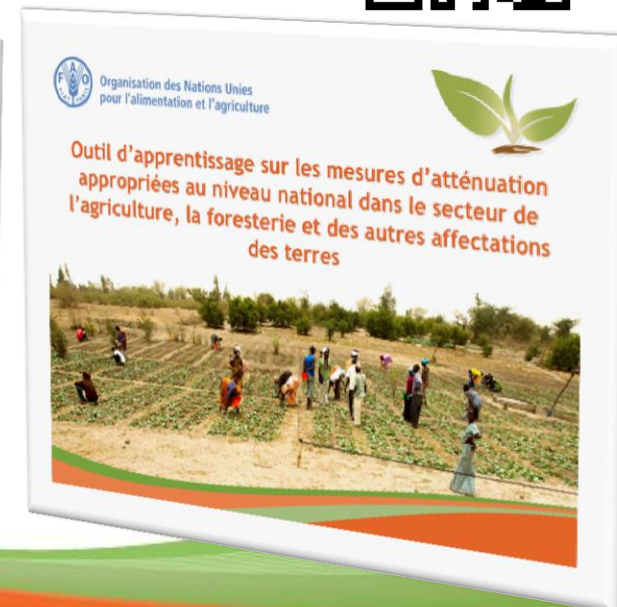
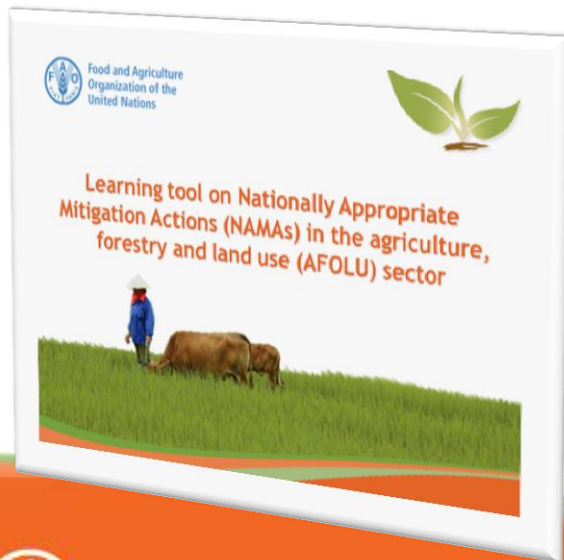
# FAO tool for NAMA development in agriculture, forestry and other land use sector

In AFOLU sector there is a notable lack of NAMAs that received financing.

FAO tool supports the efforts of developing countries in **the identification, development and implementation** of country specific mitigation actions in the context of national sustainable development.

**Format:** online detailed guidance

Available at: <http://bit.ly/fao-nama-tool> in English, Spanish and French



# Structure of the tool



The tool is composed of 5 modules:

1. Climate change and agriculture
2. Background on NAMAs
3. Step by Step NAMA Development
4. Monitoring, reporting and verification (MRV)
5. NAMA financing

## Face to face trainings



NAMA tool was already used for tailored trainings on:

- Introduction to agriculture NAMA development in Zambia
- Dairy NAMA development in Kenya
- Integrated Food Energy Systems NAMA in Viet Nam
- Regional workshop on AFOLU NAMAs identification and design in Asia.

Additional, tailored trainings are available upon FAO member states request.

Trainings demonstrated that

- NAMAs in AFOLU can be instrumental in making **crop and livestock production more productive and efficient**; and
- NAMAs can be used as a vehicle to **access climate financing for INDC implementation.**



# FAO's support for NAMA development

## FAO's technical support to countries

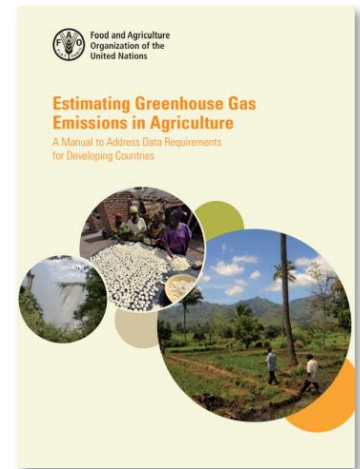
- define GHG baseline scenario and identify and set priorities
- measure impacts of mitigation actions
- quantify sustainable development benefits
- review and harmonization of policies/plans/programmes
- institutional mapping and inter-ministerial coordination.

## Tools

- Data: **FAOSTAT**, **GLEAM**
- GHG monitoring and scenarios comparison: **FAO EX-ACT tool**
- Land use change monitoring: **FAO Collect Earth**

## Knowledge sharing

- Publications, workshops, trainings, [webinars](#) and [“Online Communities of Practice on NAMAs in agriculture”](#).





Food and Agriculture  
Organization of the  
United Nations



Learning tool on Nationally Appropriate  
Mitigation Actions (NAMAs) in the agriculture,  
forestry and land use (AFOLU) sector



# Thank you for your attention

More information at:

[www.fao.org/climatechange/micca/nama-tool/](http://www.fao.org/climatechange/micca/nama-tool/)

Contact: [martial.bernoux@fao.org](mailto:martial.bernoux@fao.org) [micca@fao.org](mailto:micca@fao.org)

MICCA's activities are made possible thanks to the generous support from the governments of Finland, Germany and Norway.



Federal Ministry  
of Food  
and Agriculture



Food and Agriculture Organization of the United Nations

[www.fao.org/climatechange/micca](http://www.fao.org/climatechange/micca)