



# **Fifth Overall Performance Study of the GEF**

## **OPS5 Evidence on Guidance**



GLOBAL ENVIRONMENT FACILITY  
**EVALUATION OFFICE**

Rob D. van den Berg  
Director  
August, 2013

# Background

- All replenishments have been informed by independent overall performance studies
- Since OPS4 they are undertaken by the independent Evaluation Office of the GEF
- Reporting is split: a first report at the start of the replenishment and a final report at the third meeting
- First report was an update of OPS4 through a meta-evaluation of cumulative evidence of the three years since OPS4
- Highlights plus guidance related issues

# Problems and Funding

- Trends are worse and we are reaching the limits of our natural resources
- **Conclusion 1:** global environmental trends continue to spiral downwards
- Yet business as usual continues for complicated reasons, partly due to the financial credit crisis
- **Conclusion 2:** Global environmental problems continue to be underfunded

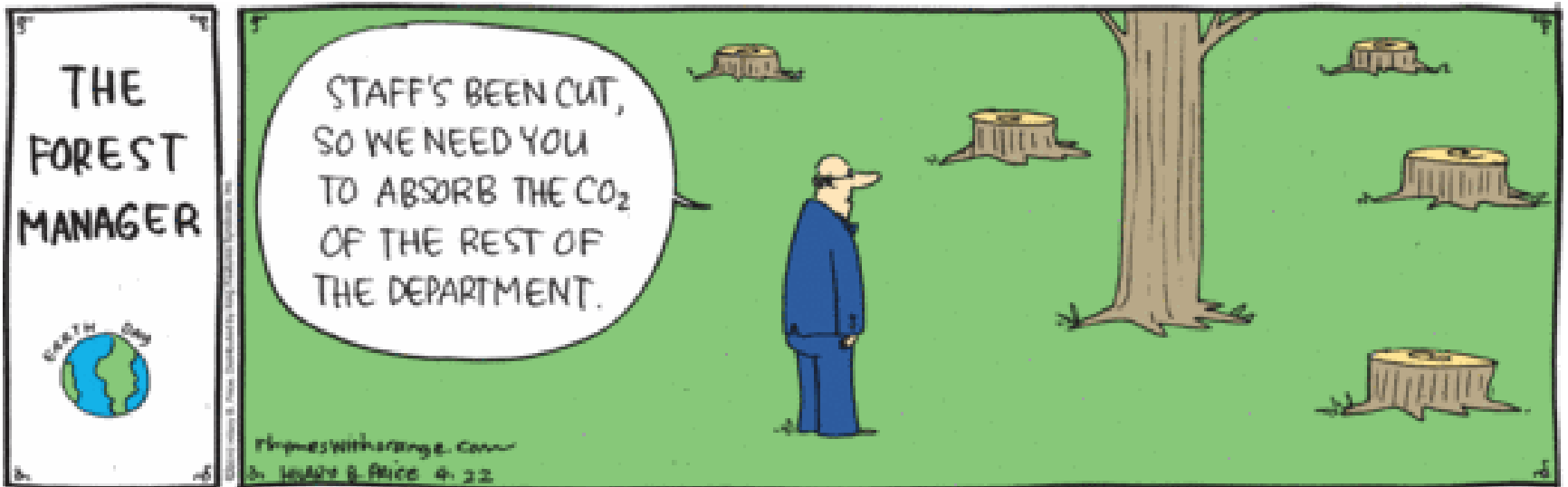
Available global  
public funding > \$ 10  
billion

Global public  
funding needs > \$  
100 billion

Public spending on  
over-use of  
resources > \$ 1 trillion



# Can \$10bn solve the problems created by \$1tr?



# From outcomes to impact

Completed projects  
(281)

Satisfactory outcomes  
range > 80%

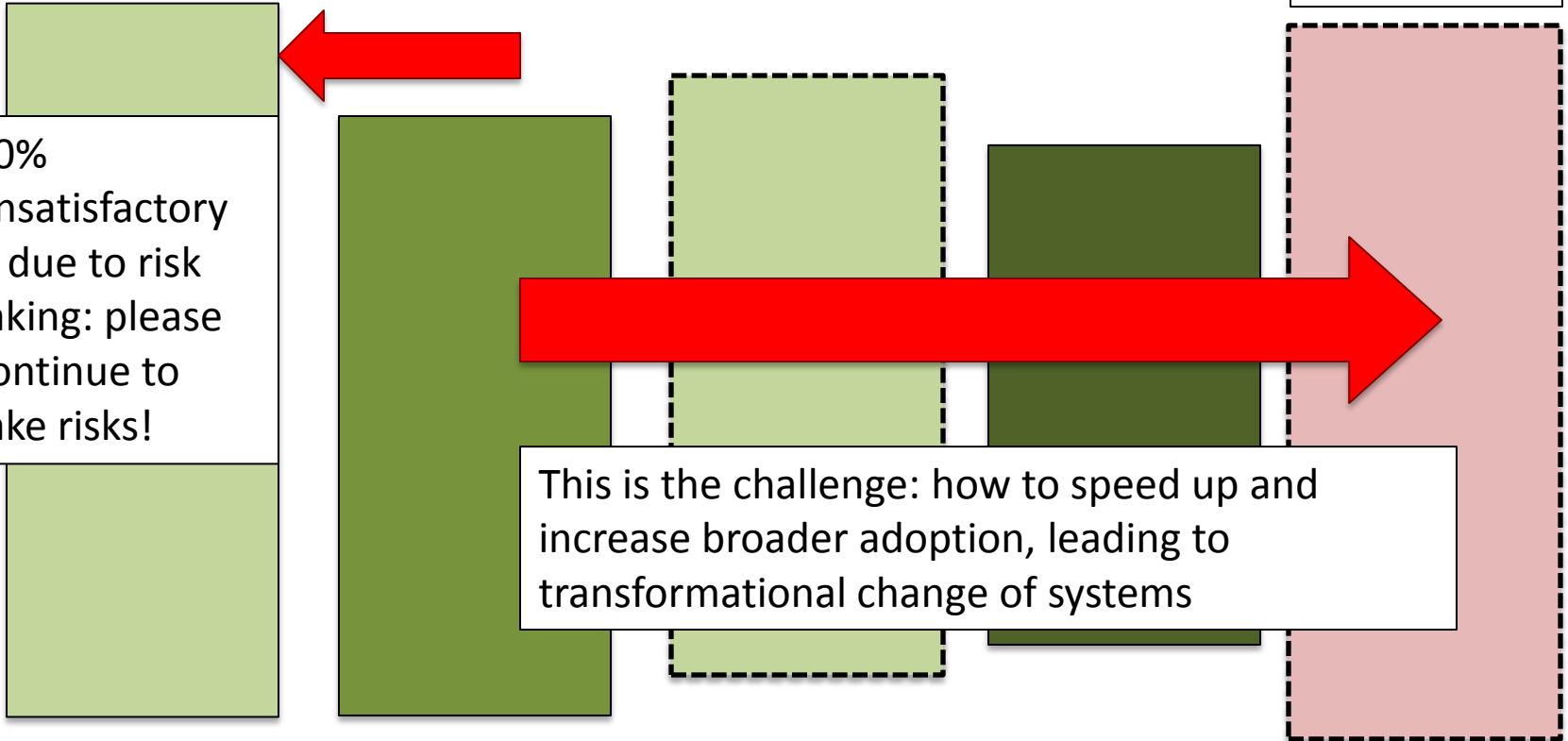
Progress toward  
impact 80%

Local impact >  
70%

System impact faces  
constraints:  
96%

20%  
unsatisfactory  
is due to risk  
taking: please  
continue to  
take risks!

This is the challenge: how to speed up and  
increase broader adoption, leading to  
transformational change of systems



# Guidance

- **Conclusion 6:** The overall level of GEF responsiveness to convention guidance is high at both the strategic and portfolio levels
- Several features of convention guidance make operationalization by the GEF challenging: ambiguous language, lack of prioritization, cumulative nature, and repetition
- At times, convention guidance is not realized due to a lack of resources, including short-term availability between replenishments, or because requests were interpreted as not eligible for GEF funding

# Guidance

- OPS5 assessment of guidance goes more into the substance than the OPS4 assessment did
- Three categories of convention guidance
  - Guidance on overarching principles, strategic directions, and eligibility criteria
  - Guidance on GEF processes including resource mobilization, allocation and project cycle procedures
  - Guidance on priorities for GEF programming and activities to be supported by GEF resources
- UNFCCC guidance has been strategic
- More interaction between Secretariats
- Reporting has improved



Figure 1: Guidance count comparison by convention

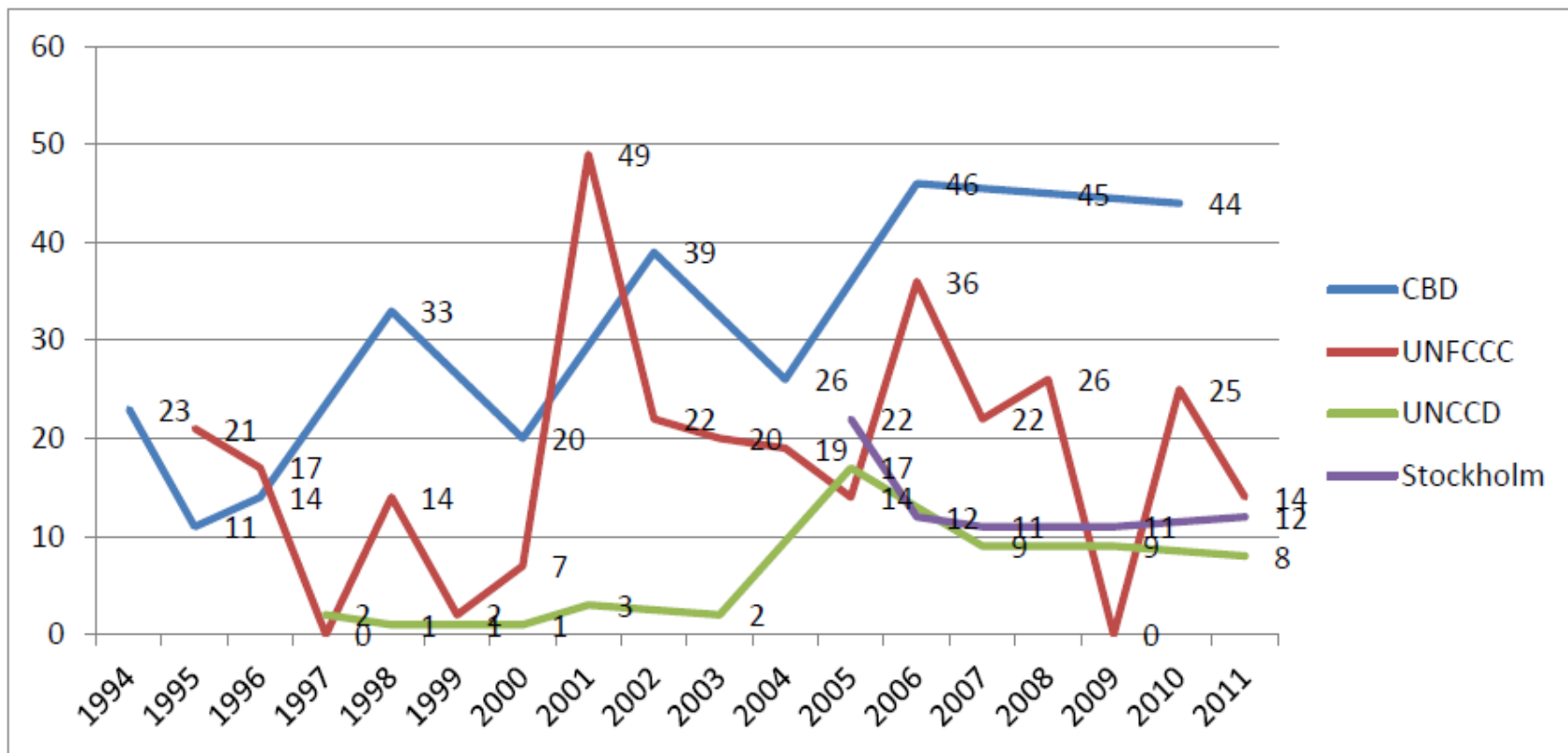


TABLE 11 ITEMS OF GUIDANCE PROVIDED BY THE CONVENTIONS

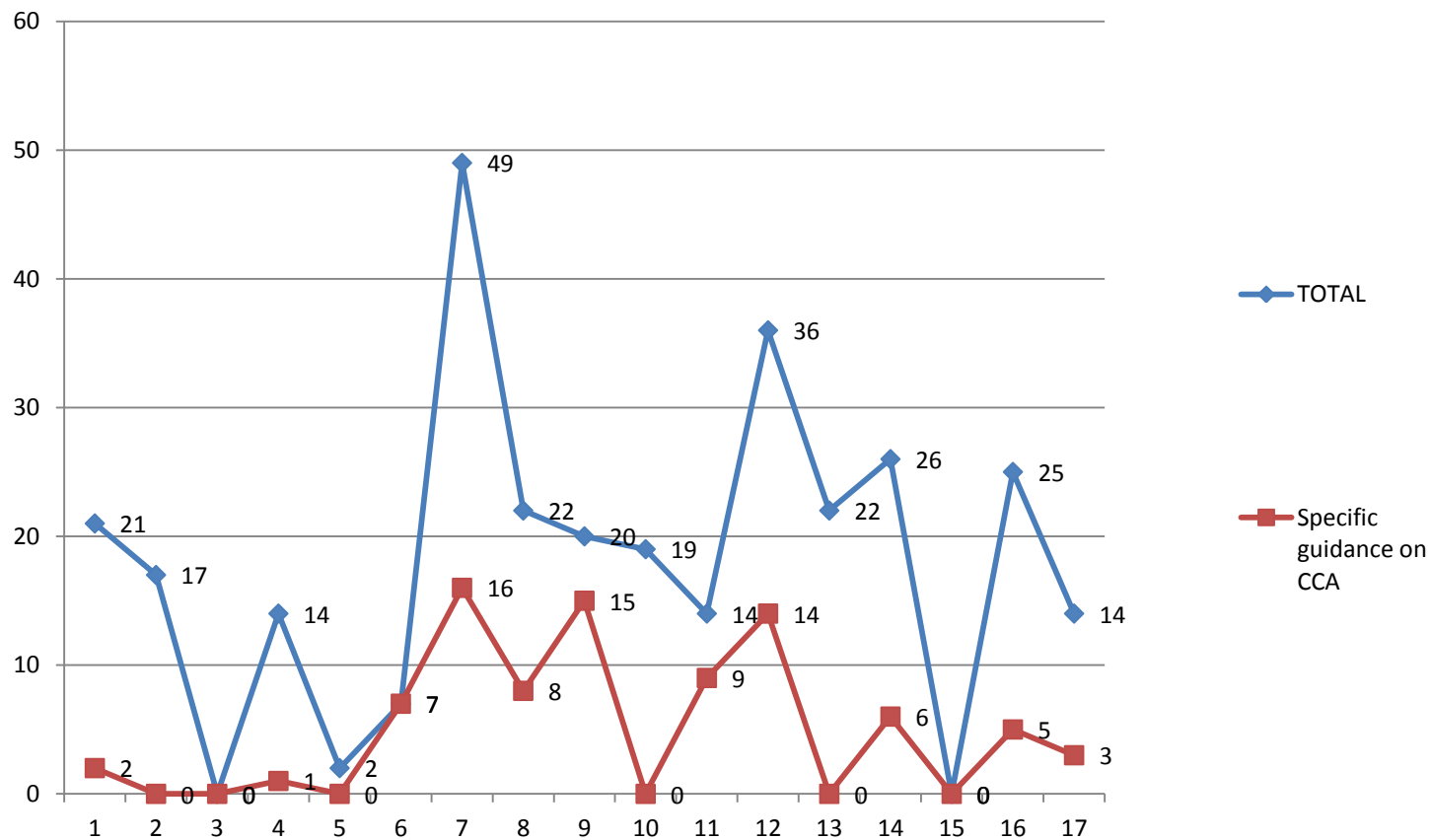
	94	95	96	97	98	99	00	01	02	03	04	05	06	07	08	09	10	11	TOTAL
CBD	23	11	14		33		20		39		26		46		45		44		301
UNFCCC		21	17	0	14	2	7	49	22	20	19	14	36	22	26	0	25	14	308
UNCCD				2	1	1	1	3		2		17		9		9		8	53
POPs												22	12	11		11		12	68

# UNFCCC guidance

- UNFCCC has a large amount of guidance
- Two areas of COP guidance:
  - to the GEF as the financial mechanism, concerned with GEF activities on climate change mitigation
  - to the LDCF and SCCF as separate funds under the convention managed by the GEF that primarily address climate change adaptation

# UNFCCC guidance

**Figure 3:** UNFCCC guidance count by COP



## **Nature of UNFCCC guidance - mitigation**

- COP guidance focuses on issues relating to GEF support for national obligations under the convention and on capacity development and knowledge creation
- Majority of guidance addresses activities tackled through the modality of Enabling Activities like National Reporting and Technology Needs Assessments
- Hardly addresses other areas of GEF programming
- The few items of guidance relating to GEF programming are formulated as suggestions for consideration

## **Nature of UNFCCC guidance – LDCF/SCCF**

- Guidance to the LDCF and SCCF formulates more concrete requirements for LDCF/SCCF programming
- LDCF received clear guidance to support the development of National Adaptation Programs of Action (NAPAs) and follow-up projects as identified in the NAPAs as well as National Adaptation Plans (NAPs)
- For SCCF guidance defines four general areas of activities (known as windows A-D) as well as a number of priority sectors to be covered by SCCF financed activities on climate change adaptation (window A)

# CBD guidance

- Overall amount of guidance has been continuously high increasing over time, much of it repetitive and not prioritized
- Often addresses other areas of GEF programming
- Majority of topics addressed by CBD guidance have been raised during COP I to COP IV, with few substantive additions during subsequent COPs
- CBD is now consolidating repetitive and obsolete guidance and prioritize guidance
- Partially successful in consolidating past guidance but did not change the approach to formulating new guidance
- Efforts to prioritize guidance is a good start and should be continued

# Comparison

A comparison of UNFCCC to CBD guidance shows that CBD guidance tends to go into technical/professional details whereas UNFCCC guidance does not. The main difference is in 2b.

**Table 2: Comparison between UNFCCC and CBD guidance by category**

Qualitative classification of guidance	Items of guidance	
	CBD	UNFCCC <sup>2</sup>
1. General (overall principles, eligibility criteria,...)	24	53
2. Programming (guidance with direct influence on GEF strategies and portfolio)		
a) National reporting, capacity development, knowledge creation and dissemination	47	106
b) Priority areas, technical issues, instruments, approaches <u>Examples CBD:</u> Taxonomy, Protected Areas, Invasive Alien Species, ABS, Mountain ecosystems. Biosafety, Forest biodiversity, Inland Water Ecosystems,... <u>Examples UNFCCC:</u> Energy Efficiency, LULUCF, Carbon Capture and Storage	152	3
3. Procedures (project cycle, resource allocation, ...)	78	91

# Working relationships

- OPS4 noted steps initiated to improve relationships between the GEF and the conventions and their secretariats
- It also noted room for improvement in GEF reporting to the conventions
- OPS5 finds relationships continue to improve and reporting has also improved
- Challenges and opportunities to formalize and realize synergies remain, despite intensifying interest in Multi-Focal Area activities and attempts to facilitate cross-convention linkages in reporting, project design and implementation



# Communication and collaboration

- Mechanisms are structured (retreats) and informal (regular contact prior to COPs)
- Convention secretariats recommendations on GEF reports for COPs (UNFCCC amended guidance and advised GEF Secretariat)
- Relationships are dynamic and evolving as fund activities change (LDCF – from preparing to implementing NAPAs)
- Still room for improvement in communications and consultations before and during COPS

# Improvement in GEF reporting

- OPS4 identified areas of improvements to enhance the quality of GEF reporting to conventions
- OPS5 found more reporting on cofinancing data especially to the CBD
- Assessments of the implementation of GEF projects is included even of recently started projects Reports provide lessons that can be drawn from early project monitoring and other implementation reports

# Working relationship across Conventions

- OPS5 finds opportunities to formalize and realize synergies especially through multi-focal projects
- A growing number of Multi-Focal Area projects were designed and implemented
- OPS5 also notes that convention focal points are invited to the Expanded Constituency Workshops (ECW) of the GEF, but often parties send representatives that are not convention focal points



**Thank you**

**ops5@thegef.org**

**www.gefeo.org**