

# Resources & Tools for INDC Development

4th Durban Forum on  
Capacity Building

Heiner von Lüpke, GIZ

3rd June 2015  
Bonn, Germany



## 3 examples for Resources and Tools by GIZ

1. Guiding Questions for the development and review of INDCs
2. NAMAs and INDCs – How are they linked?
3. Guidance for stakeholder dialogues and political advocacy for INDCs



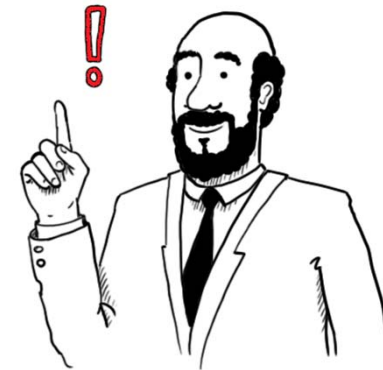


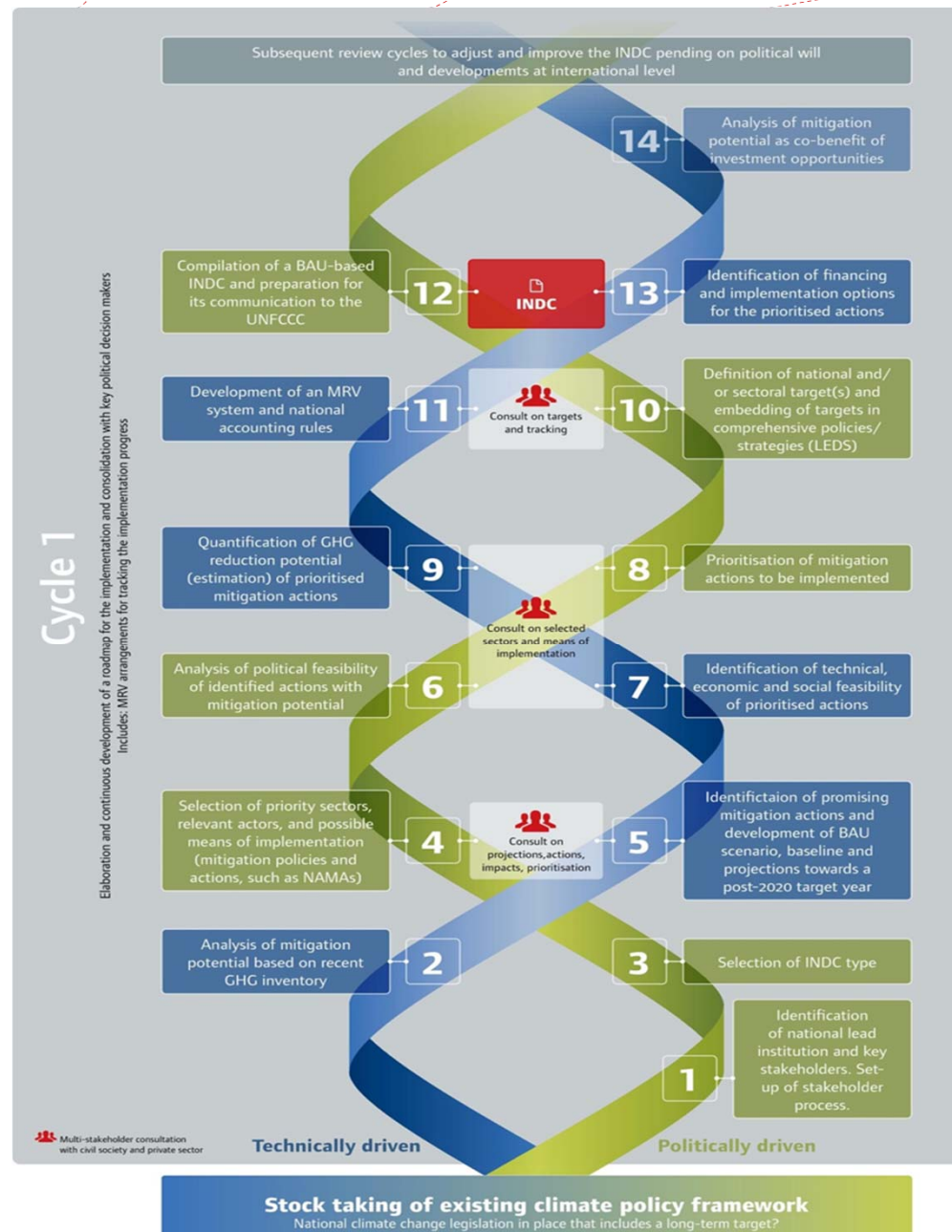
# 1. Guiding Questions for the development and review of INDCs

Developed by GIZ together with Ökoinstitut (2015) for practitioners to develop, define and review their INDCs

INDC Guiding Questions are structured sequentially:

1. Preparation of INDC development
2. Data and analysis
3. Design of INDC
4. Transparency and Monitoring
5. Financing Options for INDC implementation
6. Preparation of INDC document
7. Stakeholder consultations (to be held periodically)





Guiding Questions follow a “helix structure”

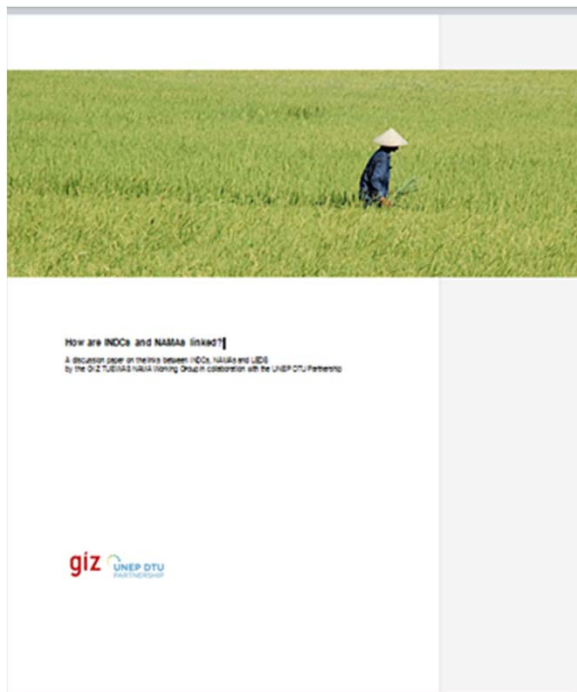


## INDC Guiding Questions: An example

<p>Development of a Business as Usual scenario</p>	<p>11. What base year/base period or baseline scenario did you choose?</p>	<p><i>Please explain the time frame of your scenario. On which basis will the timeframe of the baseline scenario be chosen? Did you choose a single-year or a historical emissions period as a starting point? If a single-year projection is chosen, what is the impact this choice can have on emission projections? For instance, the BAU emissions may be derived based on the last available GHG inventory, e.g. for 2010.</i></p> <p><b>Examples:</b></p> <ul style="list-style-type: none"><li>• <i>GHG emissions are to be reduced by 20% by 2020 in comparison to the base year 1990.</i></li><li>• <i>Per-capita emissions are to be reduced by 30% in 2020 in comparison to the average of the years 2005-2010.</i></li><li>• <i>The BAU scenario is considered as the GHG emissions resulting from an annual growth of electricity of 5% with no changes in the current fuel mix (i.e. no investment in renewables).</i></li></ul>
--	--	--



## 2. NAMAs and INDCs – How are they linked?



- Aims at clarifying linkages between NAMAs (pre-2020 ambition) and INDCs (post-2020 mitigation)
- Shows how INDCs can build on NAMAs and how they can be integrated on country level
- Paper produced by GIZ in collaboration with UNEP-DTU (2015)



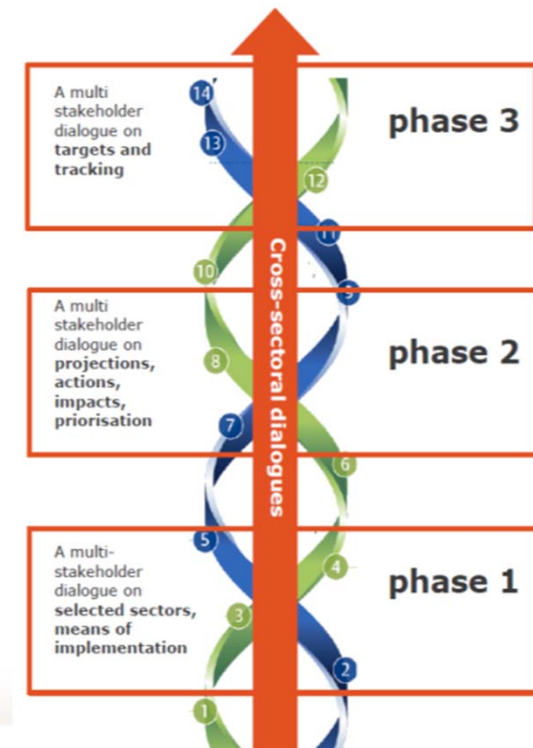
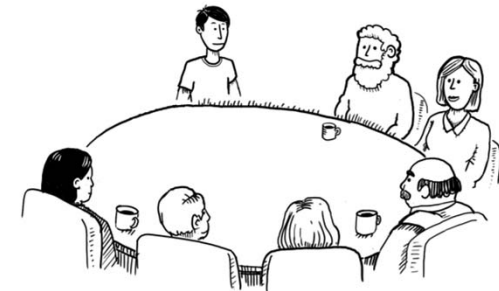
### 3. Guidance for stakeholder dialogues and political advocacy for INDCs

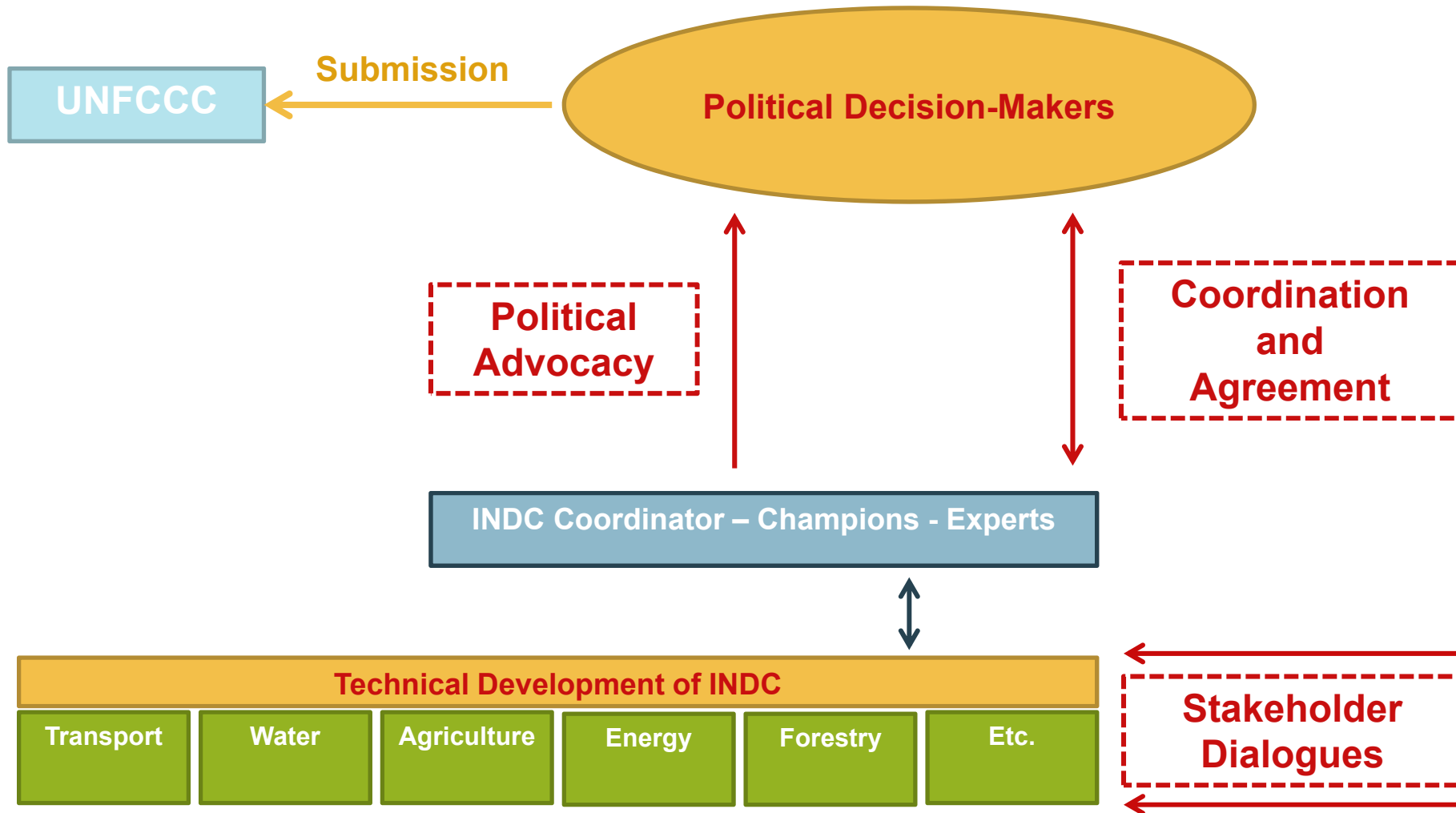
Guidance document to

- design and conduct stakeholder dialogue processes in the context of INDCs
- Conduct political advocacy for the development of INDCs

Target group:

- INDC practitioners faced with challenges to include stakeholders in the process and to overcome barriers related to political advocacy









# International Partnership on Mitigation and MRV

Home Contact Imprint Login RSS

Follow @Mitigation\_MRV

About Regional Groups Topics Good Practice News Events Projects/Initiatives Resources Links

## Intended Nationally Determined Contributions (INDCs)

Download the INDC factsheet [here](#).

At COP 19, held in Warsaw in November 2013, Parties to the UNFCCC decided (Decision 1/CP.19) 'to invite all Parties to initiate or intensify domestic **preparations for their intended nationally determined contributions**, without prejudice to the legal nature of the contributions, in the context of adopting a protocol, another legal instrument or an agreed outcome with legal force under the Convention applicable to all Parties **towards achieving the objective of the Convention as set out in its Article 2** and to communicate them well in advance of the twenty-first session of the Conference of the Parties (by the **first quarter of 2015** by those Parties ready to do so) in a manner that **facilitates the clarity, transparency and understanding** of the intended contributions, without prejudice to the legal nature of the contributions'. This decision was reiterated at COP 20, held in Lima 2014 ([1/CP.20](#), 'Lima Call for Climate Action'). Parties also agreed in Lima that INDCs towards achieving the objective of the Convention should represent a progression beyond current mitigation efforts and prevent backsliding.

INDCs already submitted to the UNFCCC can be found on the [UNFCCC INDC Portal](#).

[INDC types and headline numbers](#)

## Recommended readings

ALL LEDS NAMA MRV

UNEP Risoe Centre (2013) [Understanding the Concept of Nationally Appropriate Mitigation Action](#)

CCAP (2012): [MRV of NAMAs: Guidance for selecting sustainable development indicators](#)

UNEP RISOE (2012): [Measuring Reporting Verifying: A Primer on MRV for Nationally Appropriate Mitigation Actions](#)

WI (2011): [Current Developments in Pilot Nationally Appropriate Mitigation Actions of Developing Countries \(NAMAs\)](#)

UNDP (2009): [Nationally Appropriate Mitigation](#)

**Reference:** all documents are available on the Mitigation & MRV Partnership website, including factsheets, references to related trainings etc

<http://www.mitigationpartnership.net/intended-nationally-determined-contributions-indcs>



# Thank you

Contact: Heiner von Lüpke

[Heiner.Luepke@giz.de](mailto:Heiner.Luepke@giz.de)

More information:

<http://www.mitigationpartnership.net/intended-nationally-determined-contributions-indcs>