



# Capacity-building activities undertaken by the LEG as part of its work programme

## **First meeting of Durban Forum on capacity-building**

Bonn, 22 May 2012

## THE LEG AND ITS MANDATE

Established at COP 7 (2001)

- To provide *technical guidance* and *advise* to LDCs on **NAPAs**
- Over the years, the mandate of the LEG has progressively been expanded, and now includes providing support to LDCs on the **NAPAs**, the **LDC work programme** and the **NAP process**
- Has served 4 terms [2002-2003, 2004-2005, 2006-2007, 2008-2010], and now in its 5<sup>th</sup> term [**2011-2015**]

### Membership

- 10 members from LDCs (5 Africa, 2 Asia, 2 SIDS, 1 from any LDC)
- 3 members from Annex II Parties

### Supports LDCs through

- Guidelines, technical papers, publications on NAPAs, etc...
- Training workshops, side events, and special events
- Regular surveys to LDC focal points, and one-to-one advise; collaboration with GEF and agencies, and other organizations

## PROVISION OF CAPACITY-BUILDING BY THE LEG

LEG role thus far, in provision of capacity-building to LDCs

- Development of methods and tools for the preparation and implementation of NAPAs
- Training in the preparation and implementation of NAPA
- Provision of specific advice to LDCs upon request
- Monitoring preparation and implementation of NAPA
- Cooperation with experts under the Convention

Two examples of practical collaboration

- 2003 – Training workshop on NAPA preparation with UNITAR and GEF
- 2009/2010 – Training workshop on NAPA implementation with GEF, agencies and regional centres of excellence when possible

Reporting to the Convention

- LEG report on its capacity-building support to LDCs in its report to the SBI at each session

## LEG REGIONAL TRAINING WORKSHOPS ON IMPLEMENTING NAPA 2009-2010



**LEG training workshop for Francophone LDCs, Bamako, February 2010**



**LEG training workshop for Asian LDCs, Vientiane, May 2010**



**LEG training workshop for Portuguese's-speaking LDCs, Sao Tome, September 2010**

## LEG SUPPORT TO LDCS ON EDUCATION, TRAINING AND PUBLIC AWARENESS

### LEG outreach products

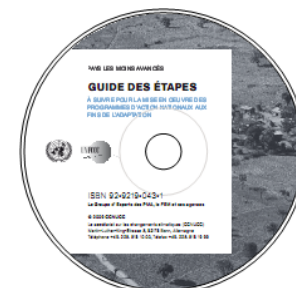
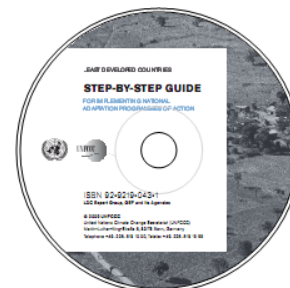
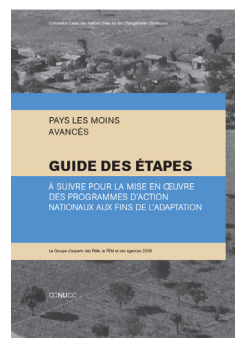
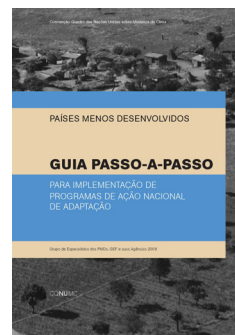
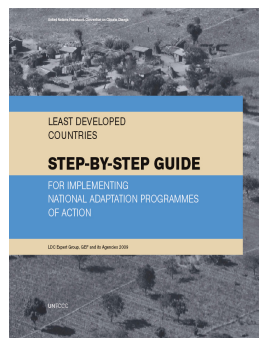
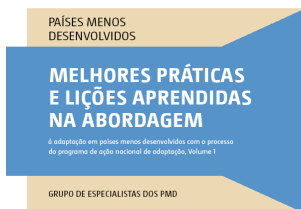
Guides, Tools, Technical papers, Publications, **Step-by-step guide for implementing NAPAs** (in English, French and Portuguese), NAPA Source Kit CD-ROM, a list of Frequently asked questions about LDCs, the LEG and NAPAs (available on the LDC Portal of the UNFCCC website), a database on submitted NAPAs, NAPA priority project profiles, and projects under implementation (available on the LDC Portal of the UNFCCC website)

### Other support to LDCs on education, training and public awareness

- Internal adoption of a system of rapporteurs, one for English-speaking LDCs, one for French-speaking LDCs, one for Portuguese-speaking LDCs to better reach out to LDCs
- LEG side events at SBI sessions = platform for the LEG to share new information with LDC and other Parties and for LDCs to share experiences among themselves and others

# Best practices and lessons learned from the NAPA process LEG step-by-step guide and training materials NAPA Source Kit CD-ROM

all available in English, French and Portuguese



**Copies of all products available on the LDC Portal  
<<http://unfccc.int/ldc>>**

**For hard copies contact the secretariat**

## LEG REGIONAL TRAINING WORKSHOPS FOR 2012-2013

**Objective:** Build on the previous LEG regional training workshops on implementing NAPA (2009-2010) and address emerging issues with the broad aim to:

- Enhancing the capacity of LDCs to implement NAPAs successfully
- Enhancing the capacity of LDCs to undertake processes for medium- and long-term adaptation, building upon NAPAs
- Promoting exchange of information, best practices and lessons learned among the LDCs
- Promoting gender and other considerations regarding vulnerable communities in the design and implementation of adaptation project

**Target:** LDC practitioners that deal with NAPA and/or other adaptation-related activities at national level

**Collaboration:** GEF and its agencies, AC, CGE, TEC and other relevant organization, agencies and regional centres

## LEG REGIONAL TRAINING WORKSHOPS FOR 2012-2013 (contd)

**Training materials:** Tailored training packages that would enable possibility of providing training for trainers. The training materials will include several modules including on:

- National development processes
- Assessment of the NAPA
- Emerging trends and approaches to implementation (e.g. programmatic approach)
- Overview of the GEF/LDCF project cycle including new requirements and enhancements
- Accessing funds under the Adaptation Fund (compilation of existing training materials)
- Consideration of scale (spatial and temporal)
- Exploration of synergies with other programmes at regional and sub-regional levels (e.g. Great Green Wall Initiative of the Sahara and Sahel)

**Workshop design:** consideration of regional and language aspects; sectoral issues of interest by each region; and overall progress in implementing NAPA/addressing adaptation

**Timeline:** First workshop will take place in the second half of 2012





THANK YOU

The LEG contact: [leghelp@unfccc.int](mailto:leghelp@unfccc.int)

LDC webportal: <http://unfccc.int/ldc>