



# **Ghana's Emission Reductions Program for the Cocoa Forest Mosaic Landscape**

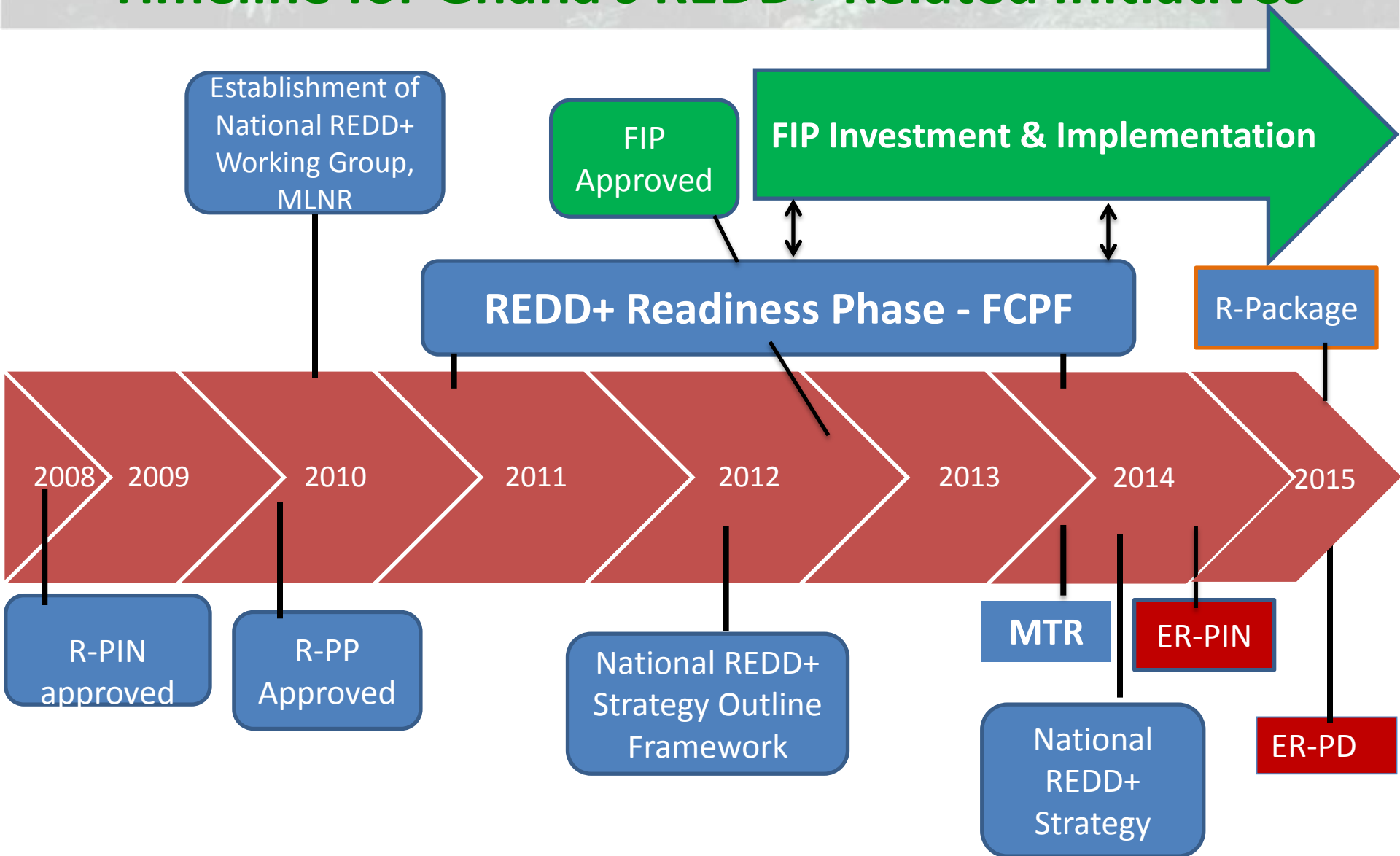
*(Ghana's Cocoa Forest REDD+ Program)*

Robert Bamfo

Head, National REDD+ Secretariat  
Forestry Commission, Accra, Ghana

ADP Land Use Technical Expert Meeting, Bonn, June , 2014

# Timeline for Ghana's REDD+ Related Initiatives

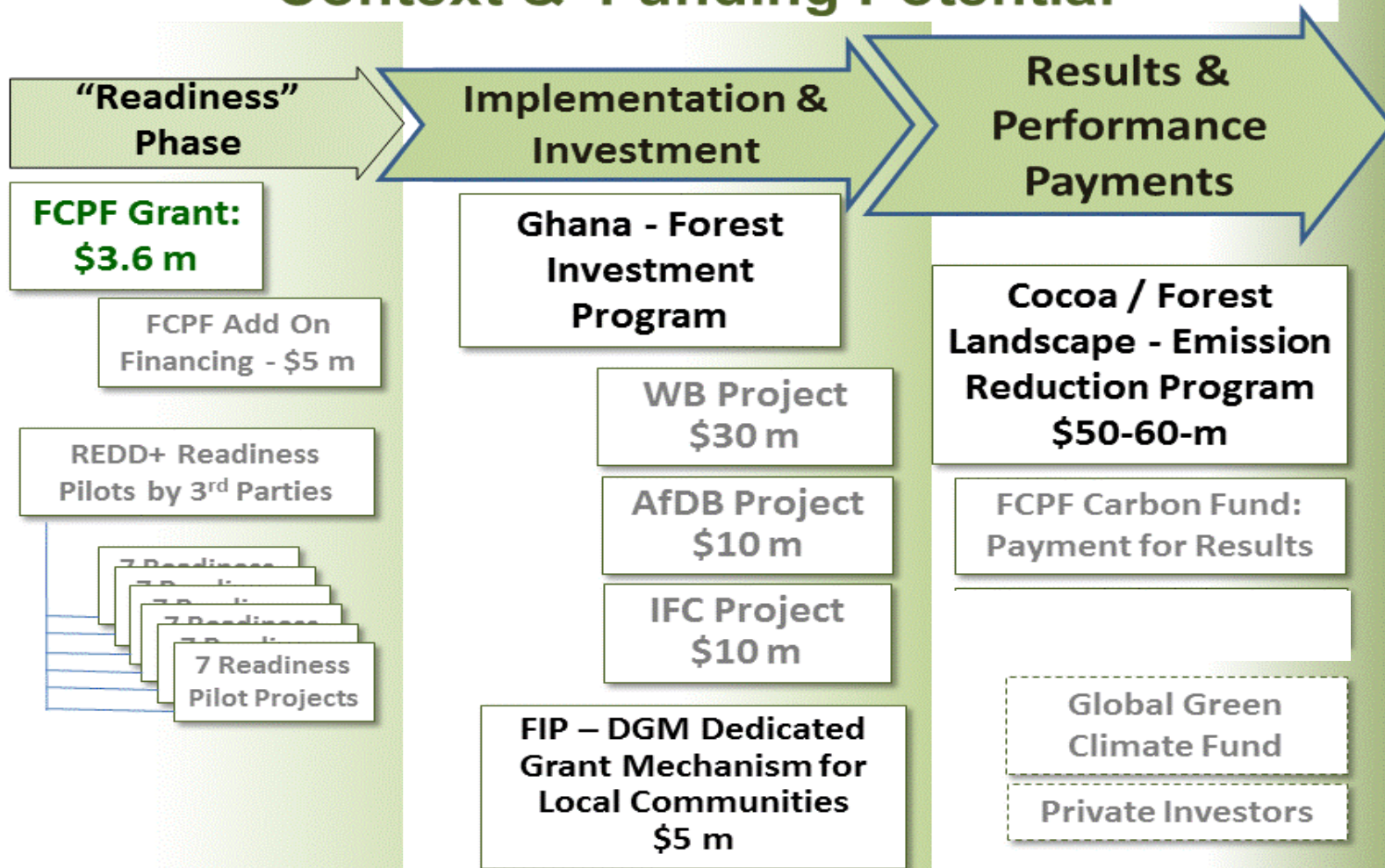


# REDD+ Readiness, FIP, & ER-PIN in GHANA

## -A whole package-

### Forests/ Cocoa Landscapes: Context & Funding Potential

Degraded Landscapes, Poverty, Low Productivity



Improved Productivity, Livelihoods, Economic Returns

# Ghana ER PIN

## Significant Scale: Sub-national Landscape

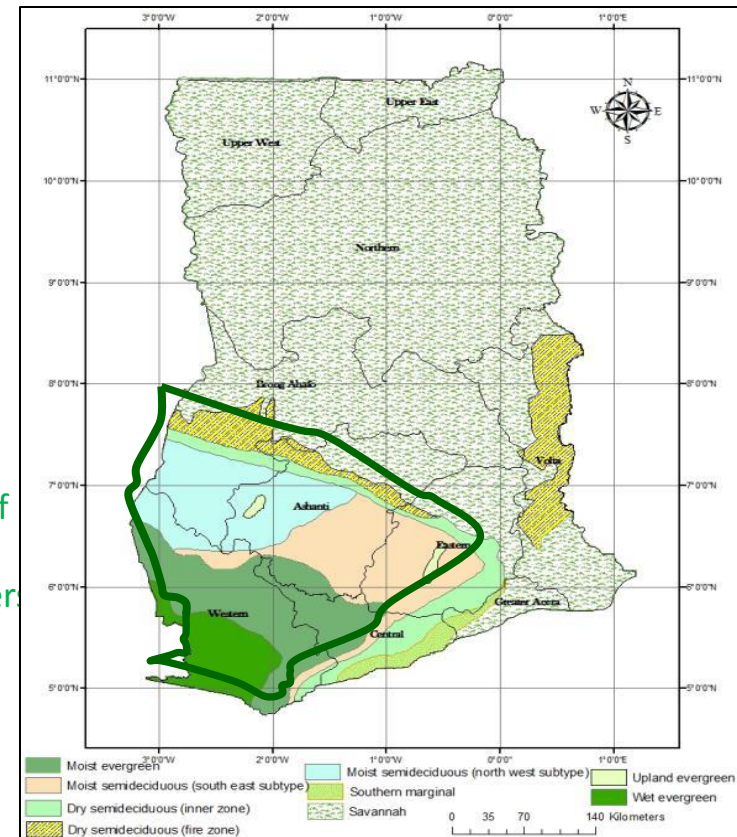
### Ecological Sub-National Approach

- High Forest Zone Eco-Region- 5.9 million ha (25% of national land area)
- Eco-regional (sub-national) approach covers 5 forest eco-zones
- Mosaic landscape that produces commodities of international and national importance- cocoa, timber, palm oil, food crops
  - Cocoa = 1.8 million ha
  - Forest Reserves & National Parks = 1.6 million ha
  - Food Crops & other Tree Crops = 1.5 million ha
- Overlaps 5 administrative regions
- Population of approx. 18 million people
  - 50% in rural areas
- Global biodiversity hotspot- Guinean Forest

The program seeks to significantly reduce emissions driven by expansion of cocoa into forest areas, coupled with illegal logging. By tackling these drivers

Ghana aims to secure the future of its forests and significantly improve

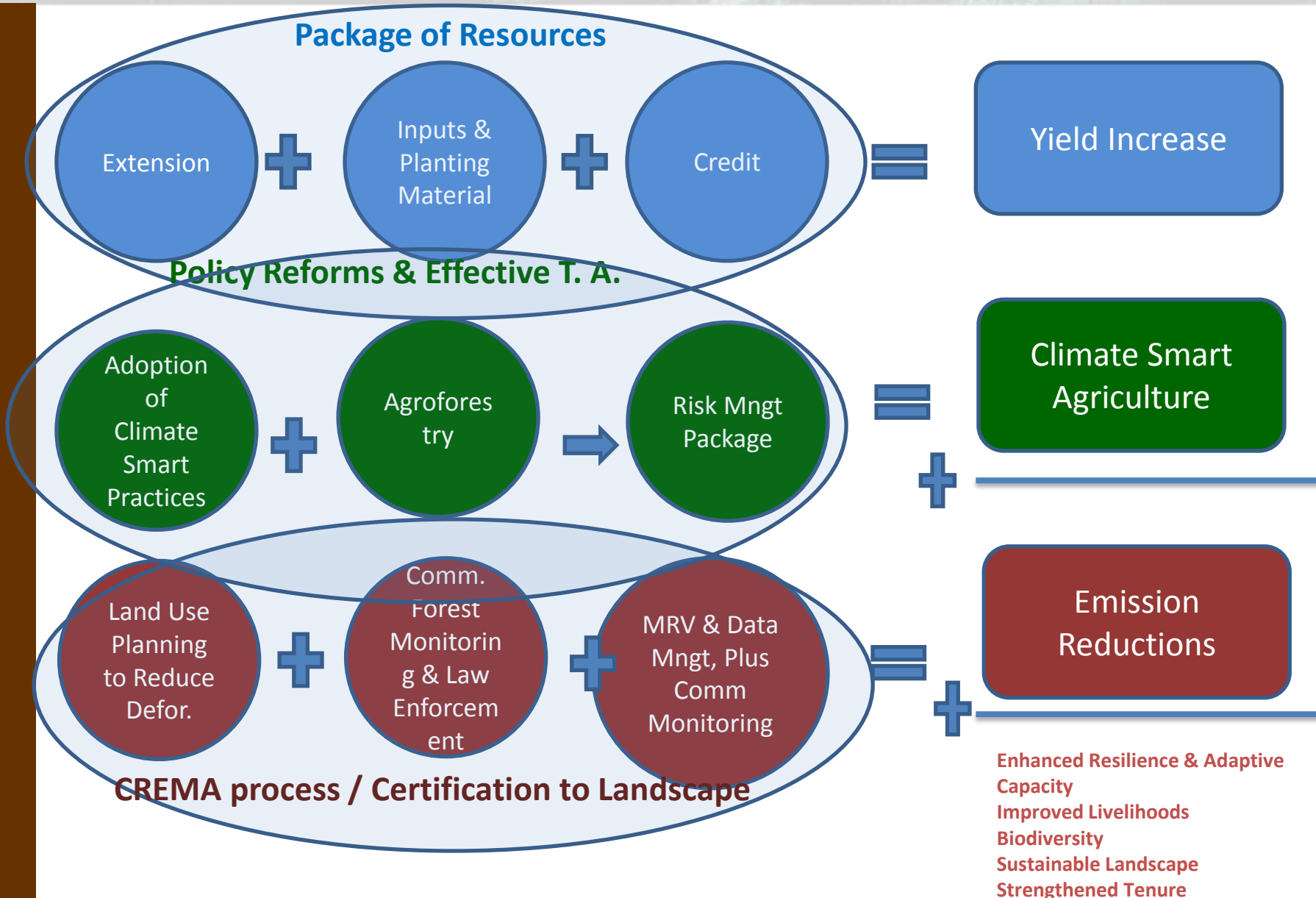
income and livelihood opportunities for farmers and forest users.



# Ghana ER PIN

## Implementation in a Sub-Landscape

Cross-sector, Institutional Collaboration



# Emission Reductions & Non-Carbon Benefits Generated

## *ERs Achievement*

- Program's FRL over twenty years (2016-2036) based on a 10 year historical average (2000-2010): **598.2 MTCO<sub>2</sub>e**
- Anticipated emission reductions up to 2020: **18.5 MTCO<sub>2</sub>e**
- ER Program's total anticipated emission reductions up to 2036 (45% effectiveness): **255.0 MTCO<sub>2</sub>e**

\* Early estimate, to be revised as FRL takes shape

*Anticipated ERs calculation:* ((Area of deforestation by forest type x emission factor by forest type) - residual carbon stock) x ER program effectiveness factor

## *Non-Carbon Benefits*

- Livelihoods
- Biodiversity
- Tenure & Rights
- Sustainability & Security of Supply



### Closed Forest

- 155 tC/ha (568 tCO<sub>2</sub>e)



### Open Forest

- Degraded forest
- Shaded cocoa
- 87 tC/ha (319 tCO<sub>2</sub>e)



### Cropland

- No shade cocoa
- Food crops
- 15 tC/ha (54 tCO<sub>2</sub>e)