



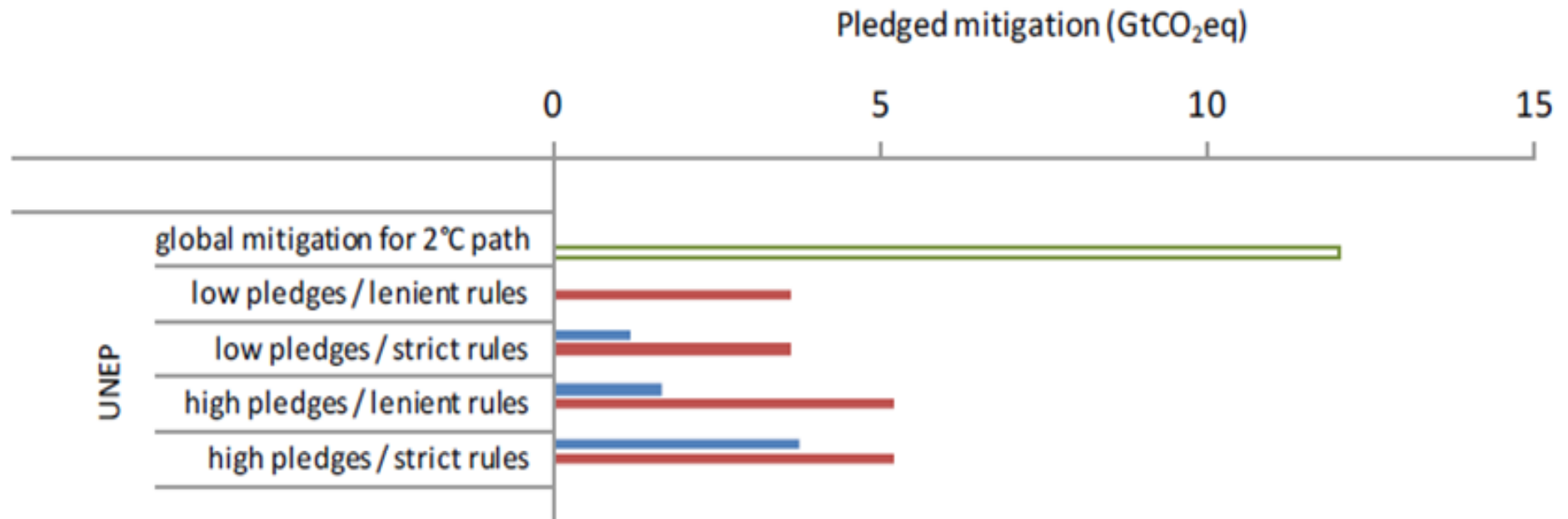
NAMA

Beirut, Lebanon

Phone: +961.1.447192 | Fax: +961.1.448649

E-mail: administration@climatenetwork.org web: www.climatenetwork.org

Setting the Context: Pledged Mitigation 2020



Source: Stockholm Environment Institute
[Comparison of Annex 1 and non-Annex 1 pledges under the Cancun Agreements](#)

NAMAs & Gigatonne Gap

Quite a few NA1 are showing leadership Thank you!

Yet significant Giga tonne gap remains.

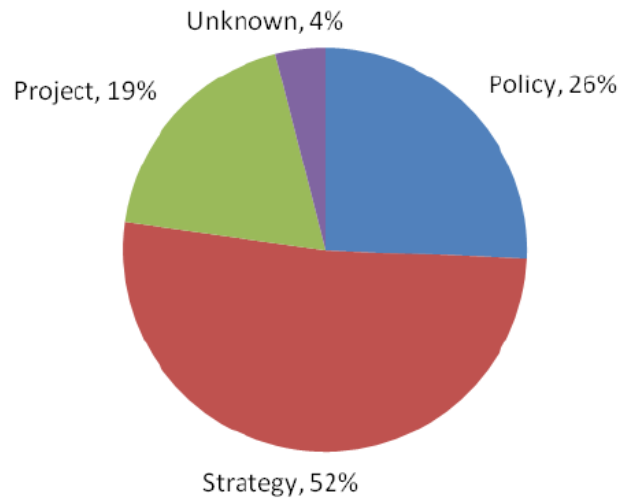
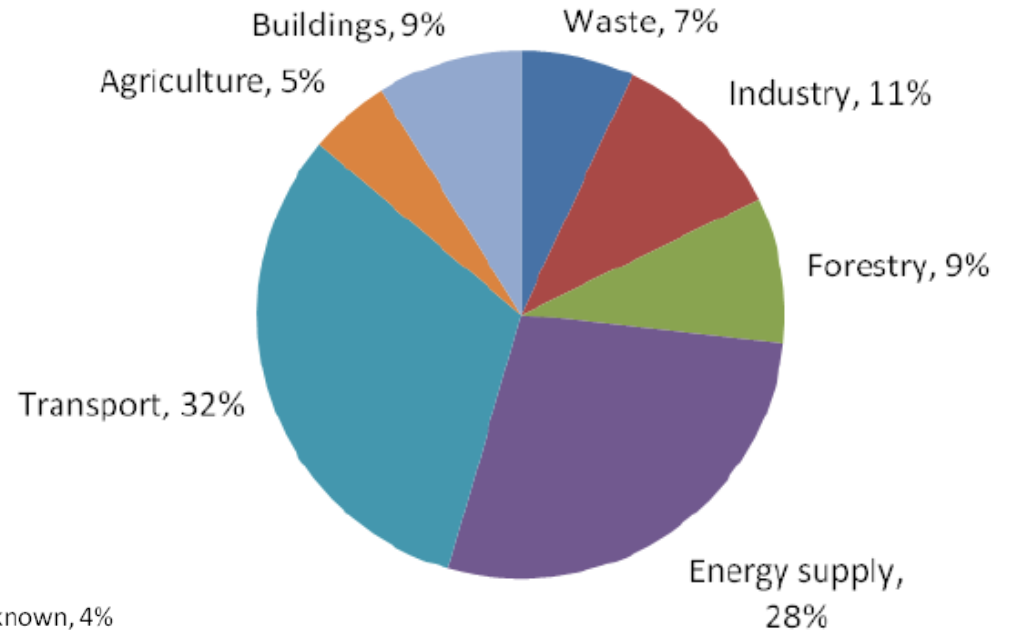
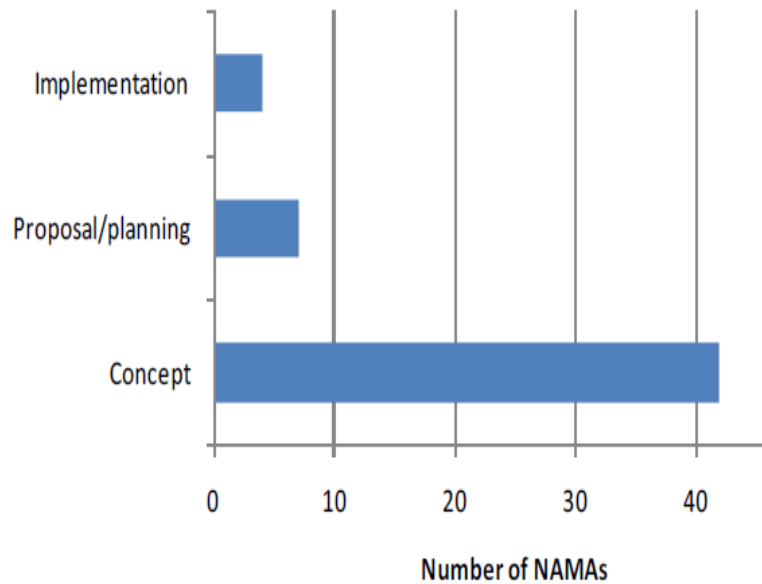
→ We urgently need more ambition from A1, closing loopholes

→ We also need to see action in NA1 countries:

1. Developing country NAMAs must play a very crucial role in addressing the gigatonne gap
2. A number of important NA1 countries have not submitted NAMAs
3. A number of developing countries have far higher potential to reduce their emission levels than what has been announced
4. Requires A1 support, and requires NA1 to prepare for this support

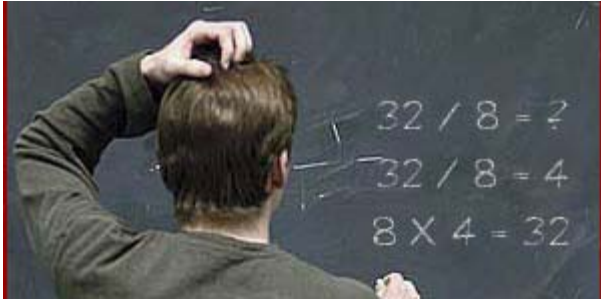
Current NAMAs

52 NAMAs in 24 countries

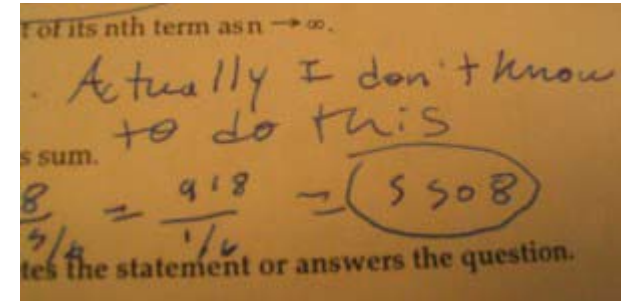


2 NAMAs are being implemented:
[Mexico: NAMA for sustainable housing](#)
[South African Renewables Initiative](#)

Source: [Ecofys NAMA database](#)



MRV



- Quantifying the impact of NAMAs is challenging
- Many GHG impacts are indirect and difficult to measure.
- Measuring the impacts of NAMAs requires:
 - strong national MRV structures, including data collection
 - a coordinated approach at the national level
 - a standardized data collection and auditing against methodologies at the national level
- Strong MRV systems require much capacity building. This is expensive and A1 should share the cost.

Low-Carbon Development Strategies

What are LEDS: nationally determined, long-term, economy wide (as much as possible), revised periodically

- Address the issue of equitable access to sustainable development (bring out win-win situations)
- Provides a trajectory and vision (attracting finance)
- Determines sequence of action to avoid locking into a carbon-intensive infrastructure
- Involves various national agencies in new paradigm
- Identifies types of NAMAs available

Further clarification for NAMAs

-Provide clarity on assumptions and expected emissions

- Key factors underlying BAU projections
- Information on energy use and prices
- Economic development and population trajectories
- Advanced NA1 countries should provide net emissions for 2020

-More on LCDS

- Advanced NA1 countries should develop their plans in 2-3 years
- Should not hinder reporting and development of NAMAs
- Could have different level of scope and complexity

Credited NAMA

NAMAs categorized as: unilateral, financed, credited

A few words of caution about credited NAMAs:

- NAMA crediting must not undermine the environmental integrity of global mitigation action.
 - Avoiding double counting (financial and GHG) is key and will be challenging.
 - It requires strong international accounting frameworks and strong institutional capacity in host countries.
- Credited NAMAs will likely focus on “low hanging fruits” this may compete with and undermine the support of long term low carbon strategies.



Thank you!

Contact Information

Climate Action Network International

P.O. Box: 14-5472, Beirut, Lebanon

Phone: +961.1.447192

Fax: +961.1.448649

www.climatenetwork.org

administration@climatenetwork.org