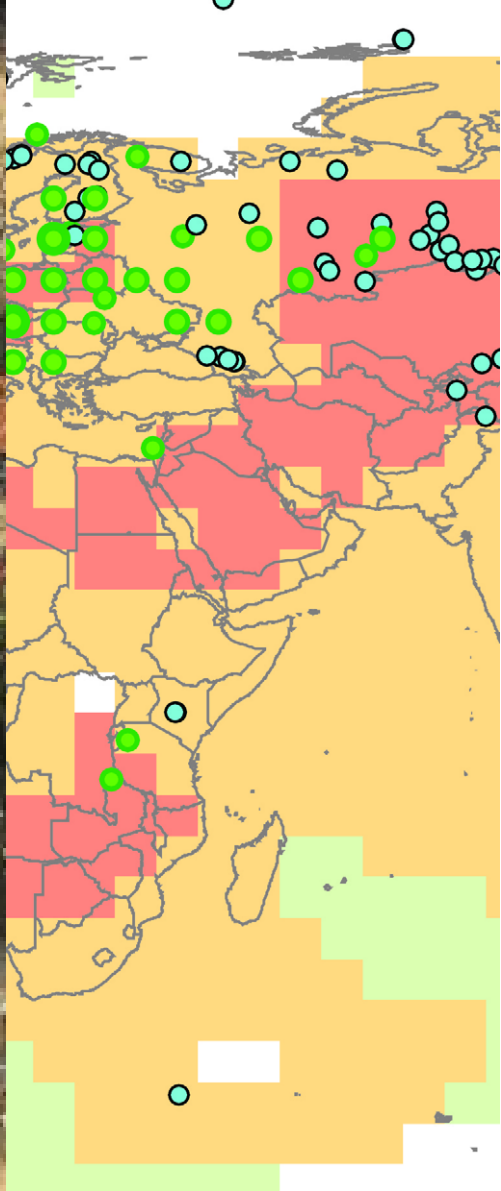


UNFCCC

**THE NAIROBI WORK PROGRAMME**  
ON IMPACTS, VULNERABILITY AND ADAPTATION  
TO CLIMATE CHANGE





This booklet provides a concise overview of the Nairobi Work Programme and the approach for implementation, thereby providing organizations and Parties with the avenues available should they wish to become involved.

## 1. OBJECTIVE

### **The aim of the Nairobi Work Programme (NWP) is twofold:**

- To assist all Parties, in particular developing countries, including the least developed countries and small island developing States, to improve their understanding and assessment of impacts, vulnerability and adaptation; and
- To assist all Parties to make informed decisions on practical adaptation actions and measures to respond to climate change on a sound scientific, technical and socio-economic basis, taking into account current and future climate change and variability.

## 2. RATIONALE

### **Why have a work programme?**

- Because adaptation to climate change and its adverse effects is of high priority for all countries, and developing countries are particularly vulnerable;
- Because the scientific knowledge on impacts is increasing all the time, as are practical experiences in responding to adaptation needs. This knowledge needs to be exploited;
- Because responses to climate change should be coordinated with social and economic development in an integrated manner with a view to avoiding adverse impacts on the latter; and
- To recognize, and make the most of, activities relating to impacts, vulnerability and adaptation to climate change that have already been undertaken elsewhere at national, sectoral and local levels, as well as by Parties and organizations, and to catalyse further work.

### 3. EXPECTED OUTCOMES

**The expected outcomes of the NWP are:**

- Enhanced capacity at international, regional, national, sectoral and local levels to further identify and understand impacts, vulnerability, and adaptation responses, and to select and implement practical, effective and high priority adaptation actions;
- Improved information and advice to the Conference of the Parties (COP) of the United Nations Framework Convention on Climate Change and to its subsidiary bodies on the scientific, technical and socio-economic aspects of impacts, vulnerability and adaptation;
- Enhanced dissemination and use of knowledge from practical adaptation activities;
- Enhanced cooperation among Parties, relevant organizations, business, civil society and decision makers, aimed at enhancing their ability to manage climate change risks;
- Enhanced integration of actions to adapt to climate change with those to achieve sustainable development.

### 4. AREAS OF WORK

The NWP is structured around nine areas of work, under action-orientated sub-themes, each of them key to increasing capacity to successfully adapt. The nine areas of work are described on the following pages.

- **Methods and tools**

Developing and disseminating methodologies and tools for impact and vulnerability assessments and adaptation planning.

---

- **Data and observations**

Improving collection, management, exchange, access to and use of observational data and other relevant information on current and historical climate variability and change.

---

- **Climate modelling, scenarios and downscaling**

Promoting the development of, access to, and use of information and data on projected climate change.

---

- **Climate related risks and extreme events**

Promoting understanding of impacts and vulnerability, emphasising current and future climate variability and extreme events, and the implications for sustainable development.

---

- **Socio-economic information**

Improving knowledge of the socio-economic aspects of climate change and promoting the integration of socio-economic information into impact and vulnerability assessments.

---

- **Adaptation planning and practices**

Collecting, analysing and disseminating information on past and current practical adaptation actions and measures, including projects, short- and long-term strategies, and local and indigenous

knowledge. This will be done through facilitating communication and cooperation between stakeholders.

---

- **Research**

Promoting research on adaptation options.

---

- **Technologies for adaptation**

Promoting the development and diffusion of technologies, know-how, and practices for adaptation, addressing identified adaptation priorities and building on lessons learned from current adaptation projects and strategies.

---

- **Economic diversification**

Promoting understanding and the development and dissemination of ways to increase economic resilience and decrease reliance on vulnerable economic sectors.

## 5. DELIVERABLES AND TIMING

Activities under the nine areas of work will include submissions from relevant stakeholders, workshops and expert meetings (by invitation), and progress reports on the implementation of the NWP.

Initial activities will take place in 2007 and 2008, with a second phase of the NWP beginning in 2009, taking into account the outcomes from the IPCC Fourth Assessment Report.

Deliverables will take the following form: synthesis reports summarizing insights gained from submissions; reports presenting the outcomes of workshops and expert meetings; and summary reports on the progress of the NWP. Some organizations may report back to other participants on the outcomes of their activities. Deliverables by area of work, as well as approximate and tentative workshop and meeting dates are given in the table below.

<b>Area of work</b>	<b>Events and timing</b>	<b>Deliverables</b>
Methods and tools	Expert meeting February 2008	– Synthesis report based on submissions – Technical report from the expert meeting
Data and observations	Expert meeting in parallel with meeting on Methods and tools	– Technical report from the expert meeting
Climate modelling, scenarios and downscaling	In-session workshop SBSTA 27	– Report and other outputs from the workshop
Climate related risks and extreme events	Workshop June 2007	– Report from the workshop
Socio-economic information	Expert meeting March 2008	– Report from the expert meeting
Adaptation planning and practices	Workshop September 2007	– Report from the workshop – Possible web-based interface
Research and Technologies for adaptation		– Synthesis reports – Technical paper
Economic diversification		– Synthesis report based on submissions

All deliverables will be widely disseminated to all relevant stakeholders through effective means, including by the secretariat.



## 6. HOW ORGANIZATIONS CAN CONTRIBUTE TO THE WORK PROGRAMME

The most significant activities of the NWP will be those undertaken by organizations, institutions, experts and communities, at their own initiative, in support of the objectives of the NWP, and catalyzed by the work of the NWP. These stakeholders can take part in the activities of the NWP, even if they have never been engaged in the UNFCCC process. In some cases this will involve organizations aligning their current work with the objectives of the NWP. In other cases, it will involve organizations rethinking their work so that adaptation to climate change is taken into consideration.

### A. CONTRIBUTING TO THE WORK PROGRAMME

If the work of an organisation is relevant under any of the areas of work of the NWP, or if its objectives are synergetic with those of the NWP, the organisation may be able to contribute to the programme of work by submitting information or views under one or more of the areas of work. Further details on submission topics, deadlines, and the organisations that can submit are provided below.

#### **Climate related risks and extreme events**

**Who?** UNFCCC Parties and relevant organizations

---

**When?** 23 February 2007

---

**What?** Information on relevant programmes and activities and views on the following issues:

- a. Experience with assessment and management of current and future climate-related risks and impacts, including those related to extreme events and those associated with specific sectors;

- b. Ability, gaps, needs, opportunities, barriers and constraints to predicting climate variability, impacts and extreme events across regions and hazards;
- c. Contribution of traditional knowledge to understanding and managing climate-related risks;
- d. Implications for sustainable development in relation to (a) to (c) above;
- e. Promoting understanding of impacts of, and vulnerability to, climate change.

### **Adaptation planning and practices**

**Who?** UNFCCC Parties and relevant organizations

---

**When?** 15 May 2007

---

**What?** Structured submissions on adaptation approaches, strategies, practices and technologies for adaptation at the regional, national and local levels in different sectors, as well as on experiences, needs and concerns. Please email the secretariat for the structured submission form.

### **Methods and tools**

**Who?** UNFCCC Parties and relevant organizations

---

**When?** 15 May 2007

---

**What?** Information on existing and emerging assessment methodologies and tools; and views on lessons learned from their application; opportunities, gaps, needs, constraints and barriers; possible ways to develop and better disseminate methods and tools; and training opportunities.

### **Economic diversification**

**Who?** UNFCCC Parties and relevant organizations

**When?** 17 August 2007

**What?** Information on examples of measures, methodologies and tools to increase the economic resilience of, and reduce reliance on, vulnerable sectors.

### **Data and observations**

**Who?** The WMO and its Member States, the secretariat of the Global Climate Observing System (GCOS) and other relevant organizations

**When?** 21 September 2007

**What?** Information and views on how the work of relevant organizations could contribute to improved understanding of current and historical climate and its impacts, including on the identification of gaps and deficiencies in data and observations, stakeholder information and capacity needs, especially at regional and national levels, and ways to improve technical infrastructure.

### **Climate modelling, scenarios and downscaling**

**Who?** The IPCC, other relevant international, regional and national organizations, modelling centres and agencies

**When?** 21 September 2007

**What?** Ways in which experts and organizations contribute to the following:

- a. Development, availability and use of climate models, and development of, access to, and use of climate change scenarios, especially those that provide subregional and regional resolution, including data downscaled from general circulation models;

- b. Enhancing capacity and experience with the use of these different models, statistical approaches and outputs, and
- c. any available training opportunities;
- d. Identification and reduction of uncertainties.

### **Socio-economic information**

**Who?** UNFCCC Parties and relevant organizations

**When?** 21 September 2007

**What?** Information and views on matters relating to the availability of information on the socio-economic aspects of climate change and improving the integration of socio-economic information into impact and vulnerability assessments, including information on the development of socio-economic scenarios and for understanding adaptive capacity, such as:

- a. Existing approaches and available data;
- b. Needs, gaps, barriers and constraints;
- c. Ways and means to improve availability and access to relevant information, including information on costs and benefits, as well as the better integration of socio-economic information into impact and vulnerability assessments.

### **B. CATALYZING ACTIVITIES ON ADAPTATION**

Many organizations have already expressed their willingness to cooperate on the NWP and have formulated detailed plans on how they intend to contribute to the work programme. Listed below are some possible ways in which the NWP could be incorporated into the work of an organization.

- Adopt some of the objectives of the NWP as objectives of the

organization and share the outcomes/experiences of trying to advance those goals.

- Use the nine areas of work to help the organization prioritize activities for advancing its work on adaptation.
- Make use of outputs from the NWP when deciding on the direction of future work, e.g. reports which highlight gaps and needs within a field such as systematic observation.
- Contribute to UNFCCC secretariat activities by submitting relevant information on views and experiences under the different areas of work.
- Start incorporating adaptation into the organization's work, e.g. by climate proofing development projects and using the activities and outputs of the work programme as sources of information and experience.
- Fund research that supports the objectives of the work programme.

## 7. RELEVANT DOCUMENTS

For further information please see the following documents, which can be downloaded from the Nairobi Work Programme pages of the UNFCCC website.

---

Decision 1/CP.10	Buenos Aires programme of work on adaptation and response measures
Decision 2/CP.11	Five-year programme of work of the Subsidiary Body for Scientific and Technological Advice on impacts, vulnerability and adaptation to climate change
Report of SBSTA 25	Nairobi Work Programme (paragraphs 11–71)

---

For further information contact

**Climate Change Secretariat (UNFCCC)**  
**Martin-Luther-King-Straße 8**  
**53175 Bonn, Germany**

**Telephone +49. 228. 815 10 00**  
**Telefax +49. 228. 815 19 99**

**secretariat@unfccc.int**  
**unfccc.int**

© 2007 UNFCCC  
United Nations Framework Convention on Climate Change

All rights reserved

This publication is issued for public information purposes and is not an official text of the Convention in any legal or technical sense. Unless otherwise noted in captions or graphics all matter may be freely reproduced in part or in full, provided the source is acknowledged.

ISBN 92-9219-036-9

Produced by the Information Services of the UNFCCC secretariat

Art direction and design: **Heller & C**  
Photos: **Still Pictures**; Inside cover (left): **IISD**  
Printing: **Druck Center Meckenheim**

Paper from sustainably managed forests (FSC)



