

Lami Town,  
Republic of Fiji  
**Ecosystem-based Adaptation**



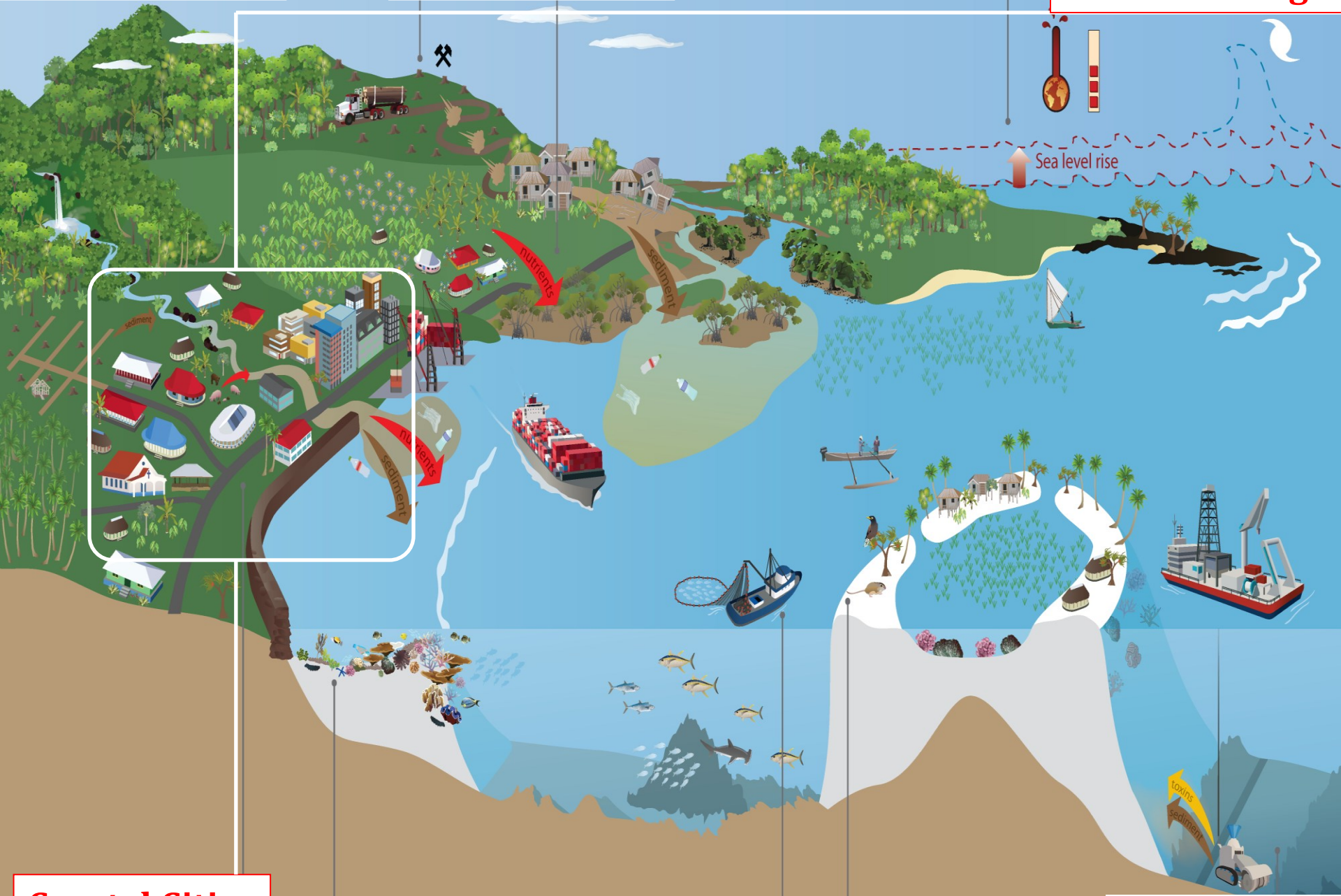


Mining & Logging

Pollution & Waste

Freshwater

**Climate Change**

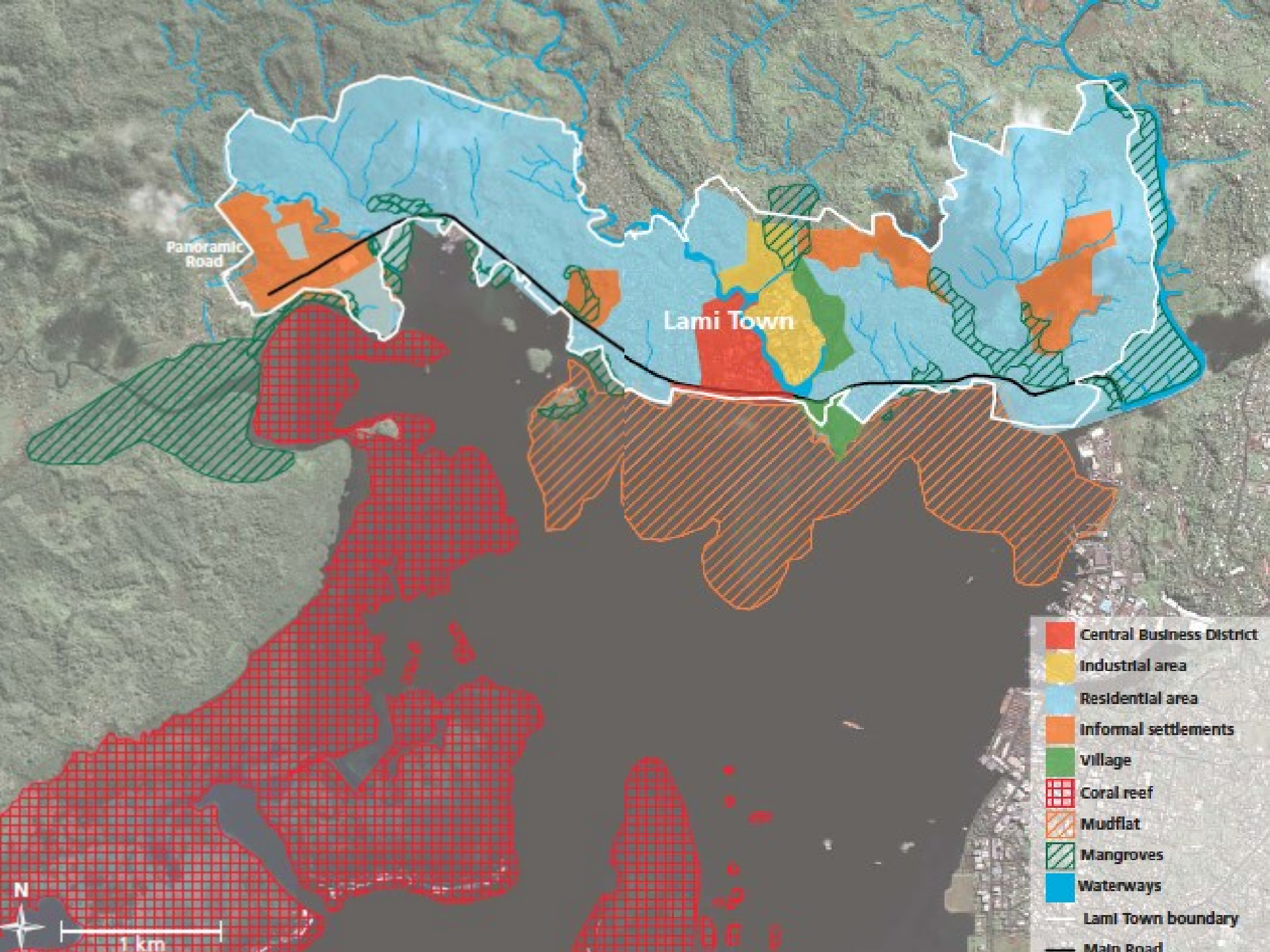


**Coastal Cities**

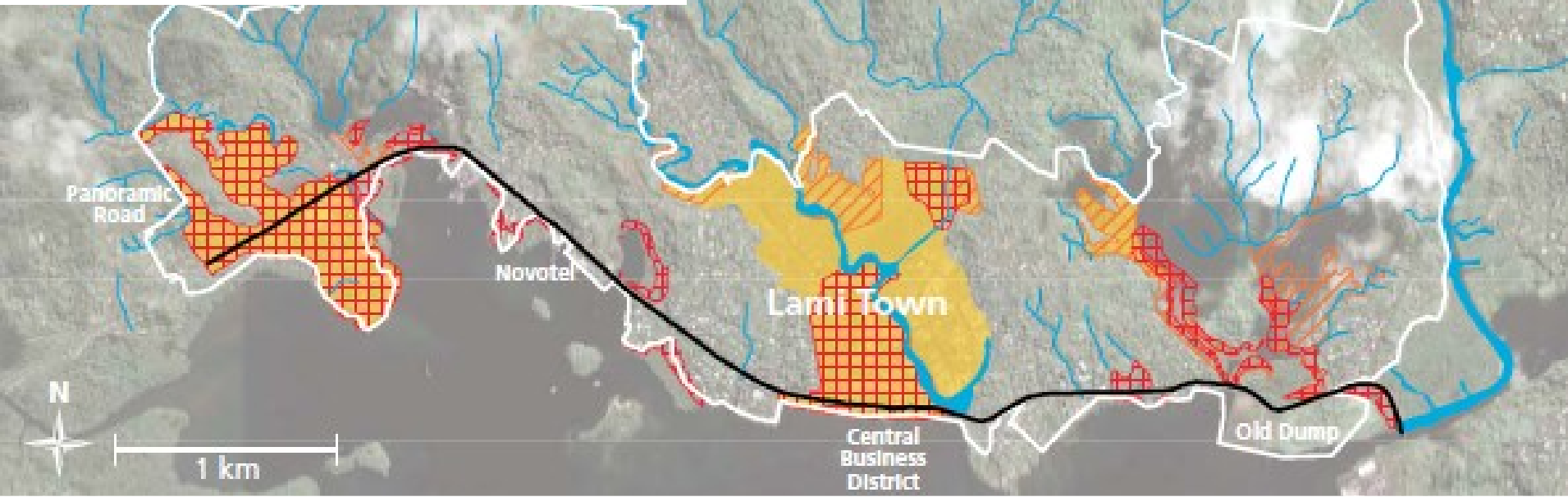
Corals & Marine Resources

Invasive Species

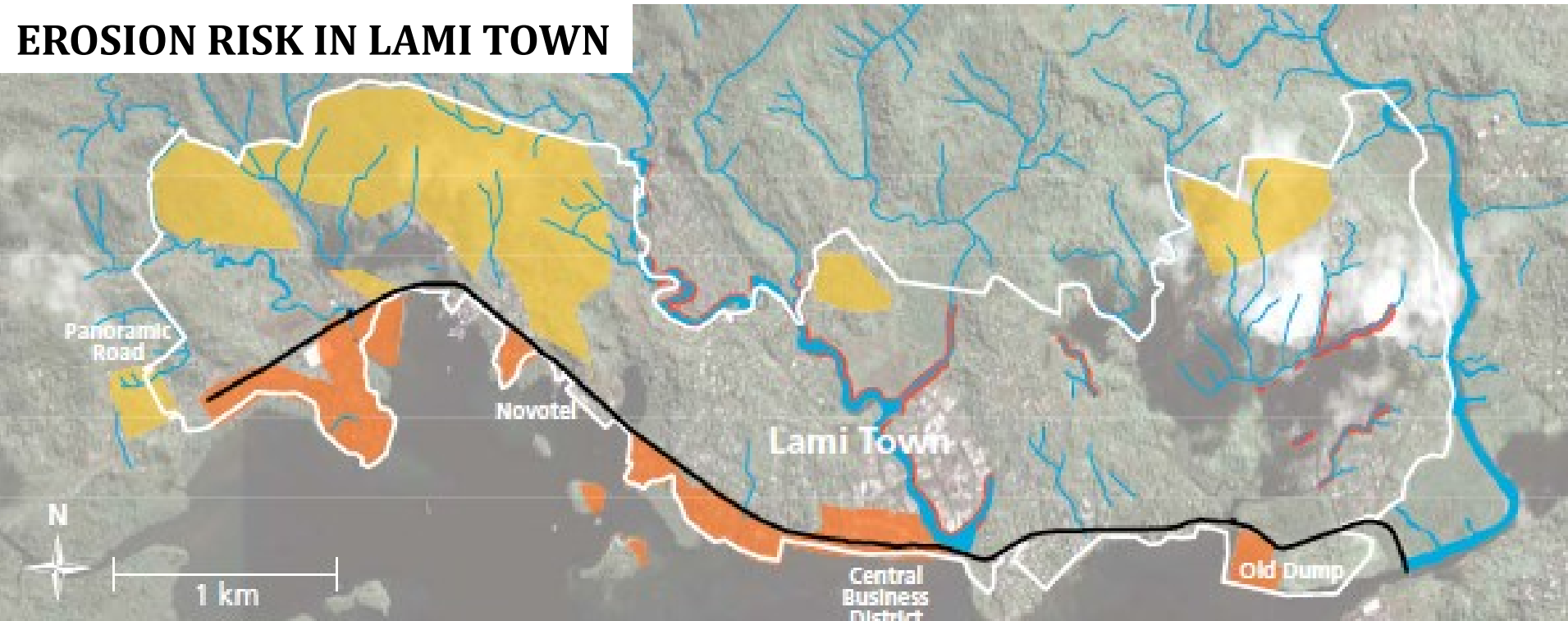
Emerging Uses



# FLOODING RISKS IN LAMI TOWN



# EROSION RISK IN LAMI TOWN



# Percentage implementation of adaptation actions

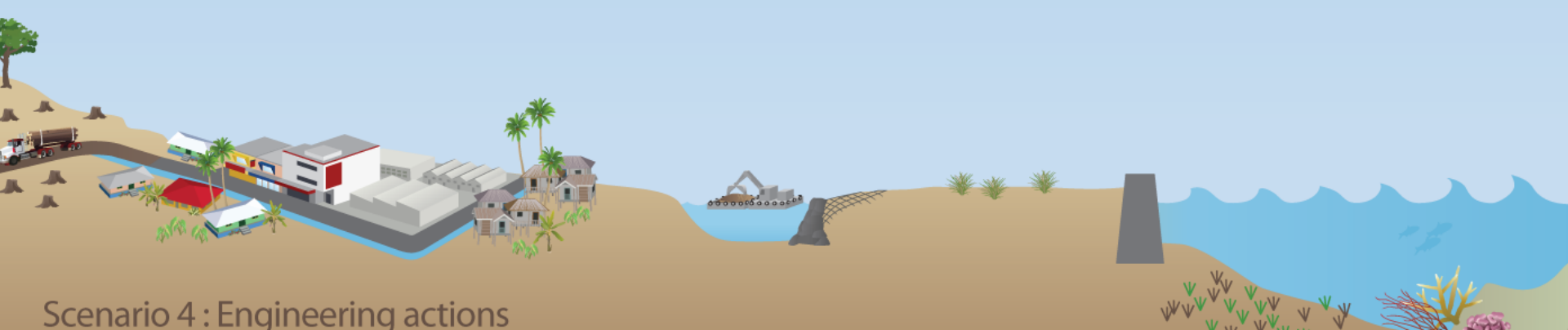
Reduce upland logging 100%	Increase drainage 0%	Replant stream buffer 100%	Reinforce rivers 0%	Replant mangroves 100%	Build sea walls 0%	Monitoring & enforcement 100%	Reduce coral extraction 100%
-------------------------------	-------------------------	-------------------------------	------------------------	---------------------------	-----------------------	----------------------------------	---------------------------------



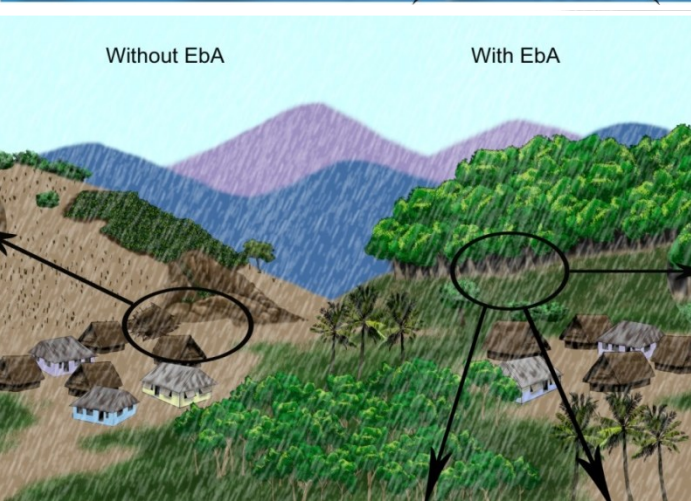
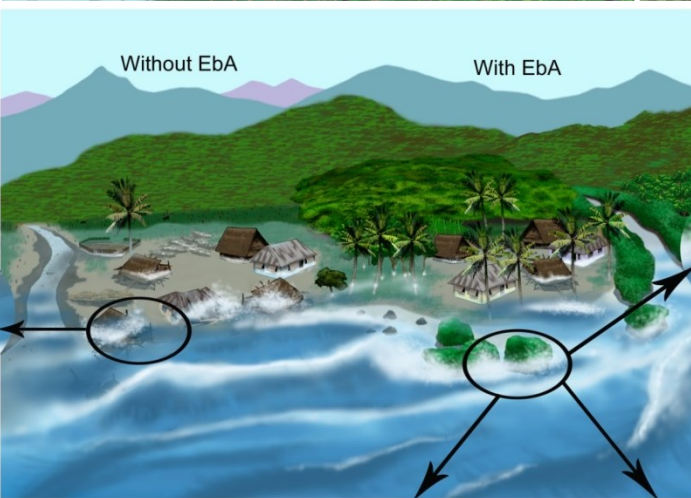
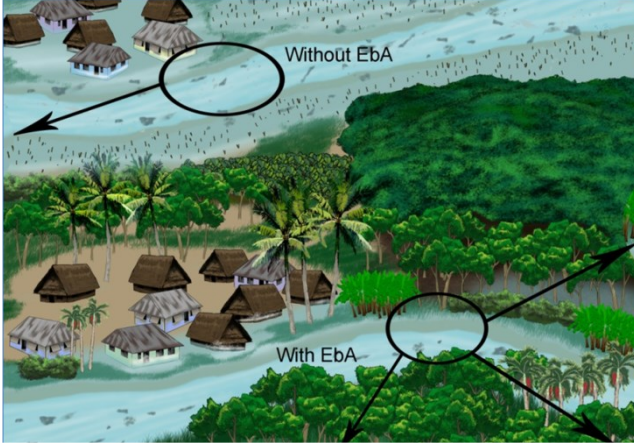
Scenario 1: Ecosystem maintenance

Adaptation option	Benefit / Cost Ratio	Damage Avoided	Adaptation option	Benefit / Cost Ratio	Damage Avoided
Ecosystem maintenance	\$19.50	10–25%	Emphasis on engineering actions	\$8	25%
Emphasis on ecosystem maintenance	\$15	25%	Engineering actions	\$9	25–50%

Reduce upland logging 0%	Increase drainage 100%	Replant stream buffer 0%	Reinforce rivers 100%	Replant mangroves 0%	Build sea walls 100%	Monitoring & enforcement 0%	Reduce coral extraction 0%
-----------------------------	---------------------------	-----------------------------	--------------------------	-------------------------	-------------------------	--------------------------------	-------------------------------



Scenario 4: Engineering actions









DO  
ES  
SON



THE FIJIAN GOVERNMENT

**UNO**HABITAT  
FOR A BETTER URBAN FUTURE