



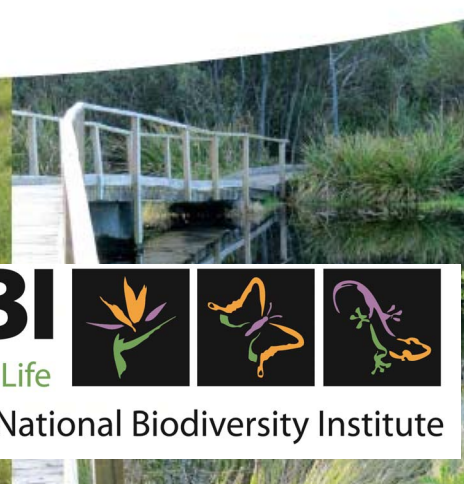
South African
National Implementing Entity
of the Adaptation Fund

Elevating adaptation on the Development

Agenda:

Insights from South Africa's National Implementing Entity (NIE) to the Adaptation Fund

Dr. Mandy Barnett, NIE Director, SANBI
March 2015



Prior to NIE accreditation:

SA has a range of existing planning policies and frameworks that enable CCA and/ or the incorporation of CCA into development:

National Development Plan 2030

National Climate Change Response Strategy (2011)

Long Term Adaptation Scenarios (LTAS)

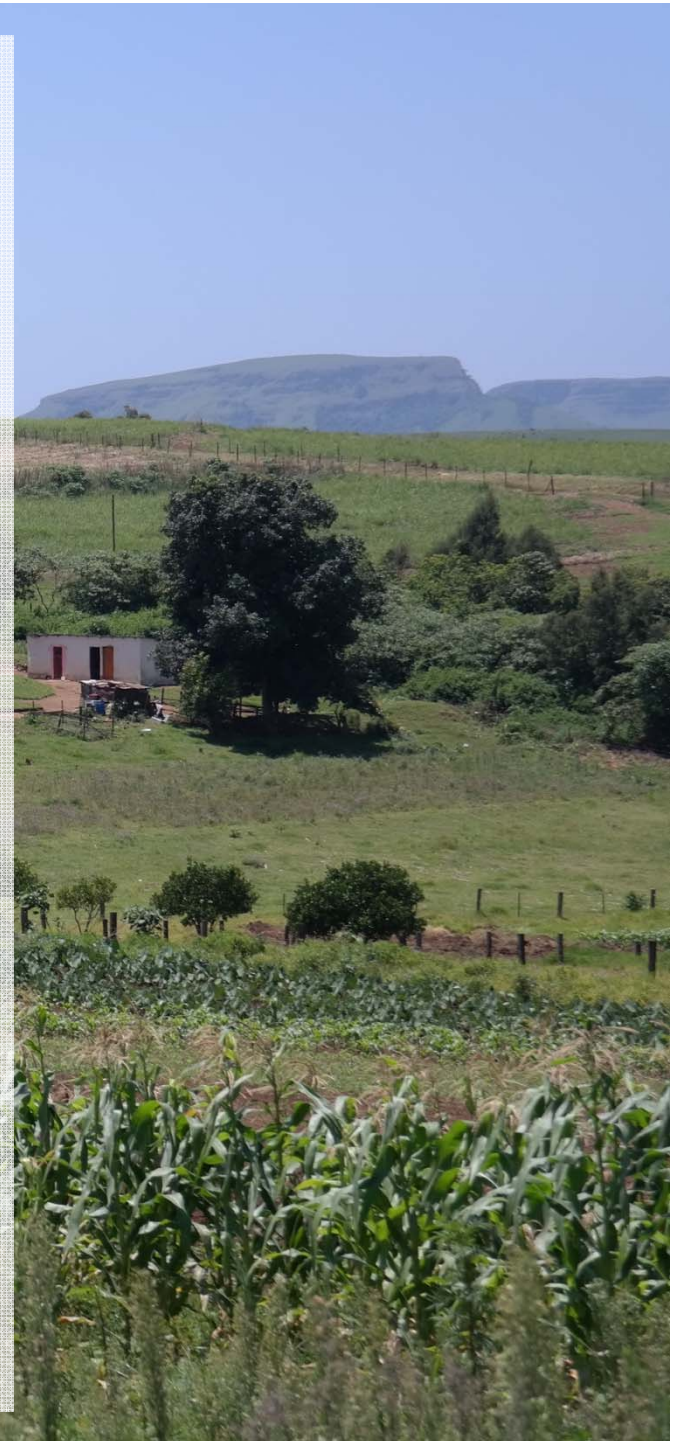
Sectoral CCA strategies

Provincial Climate Change plans

Municipal Planning Tools (IDP, SDF)

Municipal Climate Change plans

- *Many of these are at different stages of development and operate at different scales*
- ***Very few articulate specific actions at the local level....***



The NIE Project Development Process...

1. Sept 2011: Accreditation
2. Sept 2012: Operationalisation
3. August 2012: First Interim **SC meeting**
4. Oct 2012: **Stakeholder Consultation**
5. Nov 2012: **Investment Framework**
6. Nov 2012: Call for Proposals
7. Jan 2013: Proposal selection and development
8. Concept submission
9. July 2013: Concept approval
10. Detailed design – 12 months
11. July 2014: Submission for October 2014 board meeting
12. October 2014: Approval of both projects
13. November 2015 and ongoing: Inception and implementation



Engagement with government depts through national sector coordination meetings throughout the process

Climate predictions

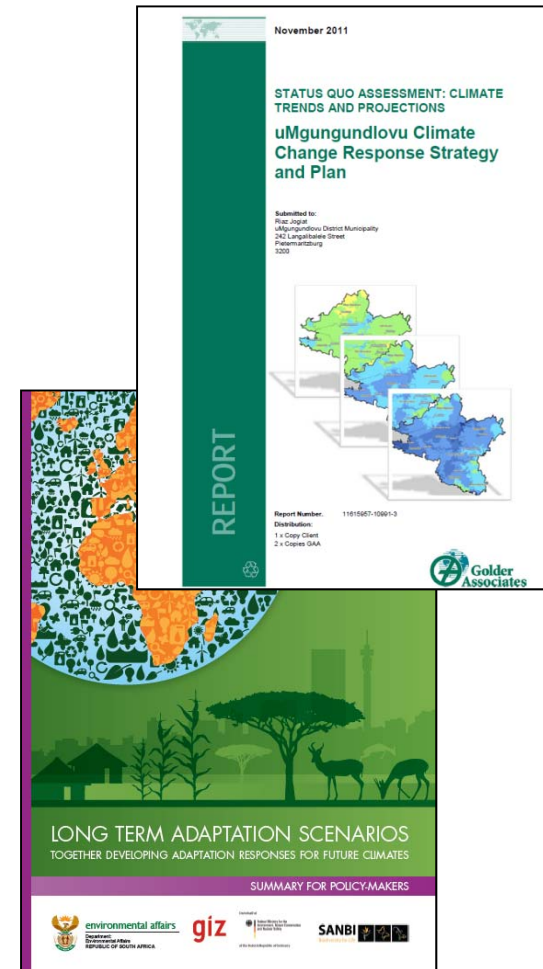
(from LTAS and UMDM climate change strategy docs)

Local scale analyses show:

- Average temperature increases
- Possible increase in mean rainfall
- Increase in daily maximum rainfall
- Increase in extreme storm and flood events
- Seasonal shifts and later onset of summer rains

...increased risk of wildland fires, storms and flooding, heat stress and possible drought events

**Good climate science, and
downscaled projections, guide
the work.....**



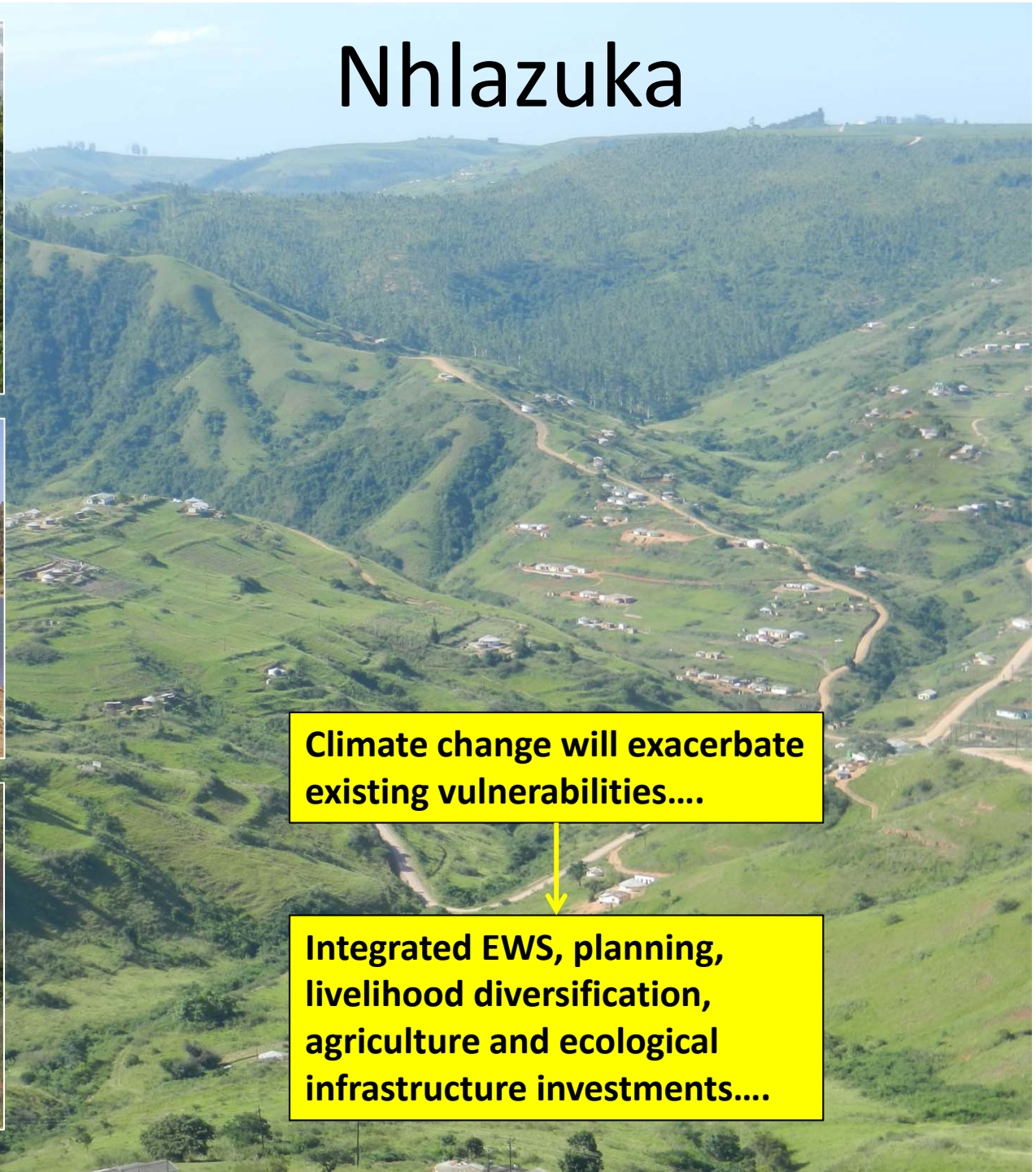
Vulindlela



Climate change will exacerbate existing vulnerabilities....

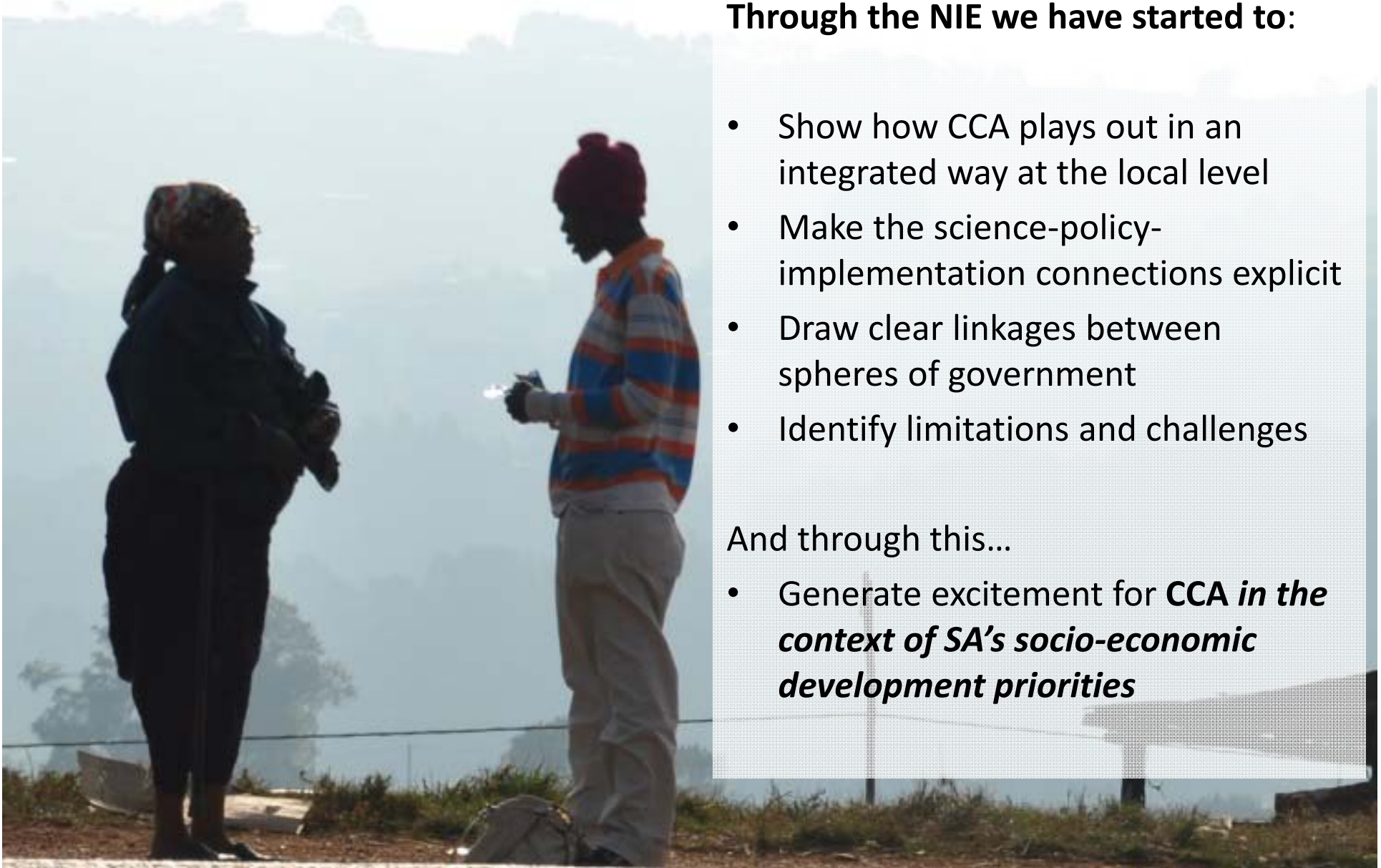
Integrated EWS, planning, livelihood diversification, agriculture and ecological infrastructure investments....

Nhlazuka



Climate change will exacerbate existing vulnerabilities....

Integrated EWS, planning, livelihood diversification, agriculture and ecological infrastructure investments....



Through the NIE we have started to:

- Show how CCA plays out in an integrated way at the local level
- Make the science-policy-implementation connections explicit
- Draw clear linkages between spheres of government
- Identify limitations and challenges

And through this...

- Generate excitement for ***CCA in the context of SA's socio-economic development priorities***



Clues for enhancing the integration of CCA into the development agenda:

Locate CCA efforts within existing development interventions

Provide good simple climate information that can be easily understood and used at the local level

Mainstream CCA into ongoing development programmes and especially **promote cross-sectoral interventions**

Invest in bottom-up participatory programming - recognise local and indigenous knowledge and local priorities

Support capacity development - linked to programming and future implementation

Promote meaningful cross sectoral governance and bring key stakeholders along



South African
National Implementing Entity
of the Adaptation Fund



Thank you

