

Assistance for country-driven NAP processes by Germany

Dr Till Below

Deutsche Gesellschaft für Internationale Zusammenarbeit
(GIZ) GmbH

NAP Expo, Bonn, 09.08.2014

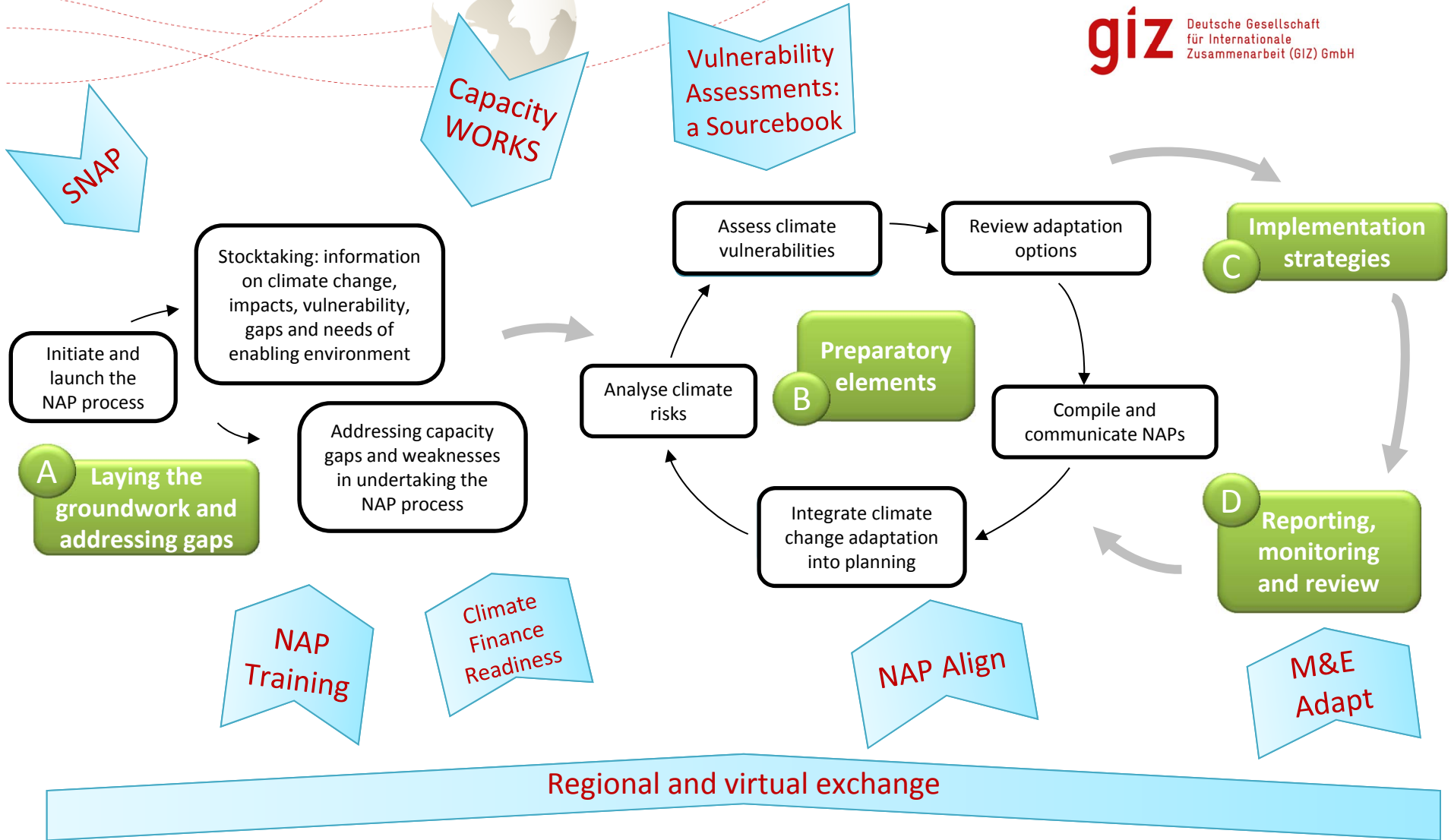




Guiding ideas for our support to the NAP process

- **Demand driven** - tailor made to country needs
- **Aligned** to the NAP technical guidelines
- **Participatory** - involving all relevant sectors
- **Stock taking** - building on existing work
- **Mainstreaming** – „whole of government“ approach
- **Flexible** pipeline of interventions as appropriate, no „monolithic“ plan
- Assist partner countries with better **coordination**
- **Lobbying for more support** – inside and outside Germany

Overview of GIZ tools and materials for NAP



Please note: The tools and approaches are applicable to more than one step or element but have been placed near the step they are supporting most for illustrative purposes.



Elements and steps suggested in the NAP Technical Guidelines prepared by LEG









12/08/2014



NAP support tool or approach by GIZ



Support to the NAP Process provided in

Country	LDC	Since	Preparatory Activities	NAP Training	SNAP Tool	NAP Align	Capacity Works	CFR
Albania	No	2014	✓					
Cambodia	Yes	2013	✓				✓	
Mauritania	Yes	2012	✓					
Morocco	No	2014	✓					
Togo	Yes	2013	✓		✓	✓		
Tunisia	No	2013	✓		✓			

Also: **vulnerability analysis** approach applied in:
Bolivia, Burundi, Mozambique, Pakistan



Lessons learned and way forward

1,5 years of targeted bilateral NAP support...

- We do know some!
- We need to go further!
 - Coordination within governments
 - Communication of needs & priorities
 - Coordination among agencies



→ Intensify discussion with bilateral partners on country level
(consultative groups...)



Thank you for your attention!

Further information is available at

<https://gc21.giz.de/ibt/var/app/wp342deP/1443/index.php/knowledge/mainstreaming/>

Contact: Till Below till.below@giz.de





Discussion: Support Needs

1. What **type of support** is needed to advance/start your NAP process?
2. What **guidelines/tools** have been used or would be useful?
What good practices exist and what needs to be improved?
3. What **modes of delivery** do you need for your NAP process?
(e.g. Long term integrated experts / short term experts
Workshops, trainings, south-south exchange)
4. What **additional request** for bilateral and multilateral NAP support agencies do you have?