



Australian Government
Department of Climate Change
and Energy Efficiency

Adaptation

Australia's approach

Richard Merzian
NAPs Expert Meeting
Vientiane, Laos



thinkchange

www.climatechange.gov.au

Adaptation is a shared responsibility

- Governments at all levels, businesses and the community have important, complementary and differentiated roles.
- Individuals and businesses are often best placed to manage the risks associated with their assets.
- Government should be take particular consideration of the most vulnerable.



thinkchange

www.climatechange.gov.au

The role of the Australian Governments

- **INFORMATION:** Provide information for business and communities to adapt.
- **CONDITIONS:** Create the right conditions and incentives for all to make efficient adaptation decisions.
- **PROGRAMS:** Ensure climate change considerations are factored into management of government programs and public assets.



thinkchange

www.climatechange.gov.au

Existing tools - Council of Australian Governments (COAG)

- The forum for national, state and local governments.
- National Government guides the economy and promotes national interests more broadly.
- Together COAG is developing a national agenda on adaptation.



thinkchange

www.climatechange.gov.au

Priorities in the next 10 years

- 6 Sectors were selected
 - Coastal management
 - Water
 - Infrastructure
 - Agriculture
 - Natural systems of national significance (Reefs)
 - Management of natural disasters

■ How to prioritise

1. Impacts
2. Urgency
3. Leadership



thinkchange

www.climatechange.gov.au

The Three Roles of Government – regarding Coastal Management

■ Providing information

- National coastal risk assessment has identified assets at risk

■ Creating the right conditions

- Coastal jurisdictions modifying land use planning to account for sea level rise

■ Public programs and assets

- Factoring climate change into emergency management



thinkchange

www.climatechange.gov.au

Coastal Management - Information

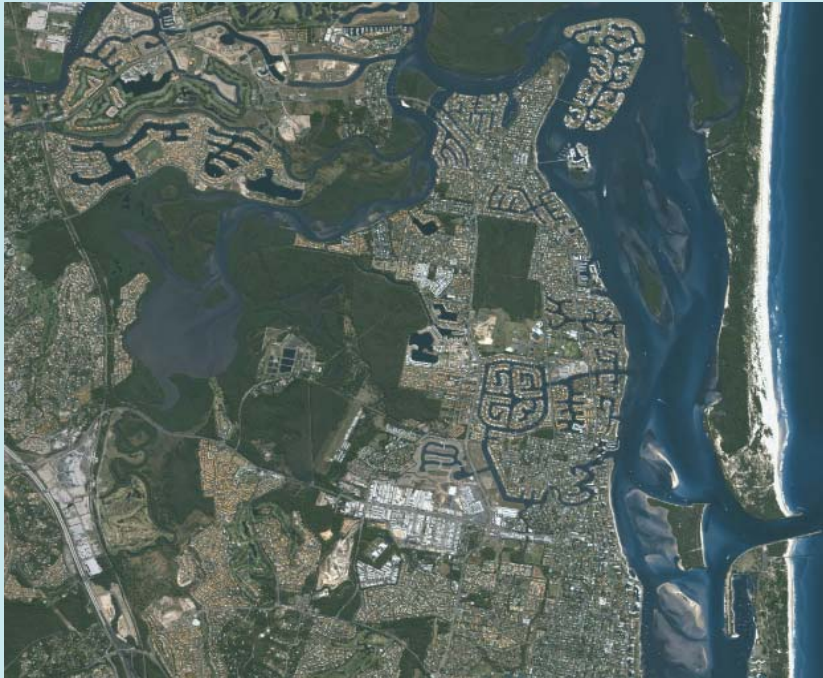


Image of the Gold Coast in 2009 and with a simulated inundation from a sea level rise of 1.1 metres.

© CNES 2009 / imagery supplied courtesy of SPOT Imaging Services and Geospatial Intelligence



thinkchange

www.climatechange.gov.au

EXTRA SLIDE

REVIEW Every 5 years

- To track our progress
- A regular Climate Futures Report.
- It will provide a mechanism to evaluate how effective our collective adaptation efforts are.



thinkchange

www.climatechange.gov.au