

# Technology Development and Transfer

Presented at

Special event in the context of the Joint SBI/SBSTA Forum  
On the Impact of the Implementation of Response Measures  
1 December 2011

By

Chizuru Aoki

Climate Mitigation Coordinator  
Senior Technology Transfer Officer



**GLOBAL ENVIRONMENT FACILITY**  
INVESTING IN OUR PLANET

[www.theGEF.org](http://www.theGEF.org)

# GEF and Technology Transfer (TT)

- ✓ GEF has financed demonstration, deployment, and diffusion of environmentally sound technologies and enabling activities
- ✓ Many GEF-supported initiatives are directly and indirectly linked to response measures
- ✓ GEF also finances National Communications (NCs) and Technology Needs Assessments (TNAs)
- ✓ Programming reflects convention guidance and national priorities

## Mitigation

GEF Trust Fund  
Invested \$3 billion  
>2.5 billion tonnes CO<sub>2</sub> avoided  
TT articulated as priority

## Adaptation

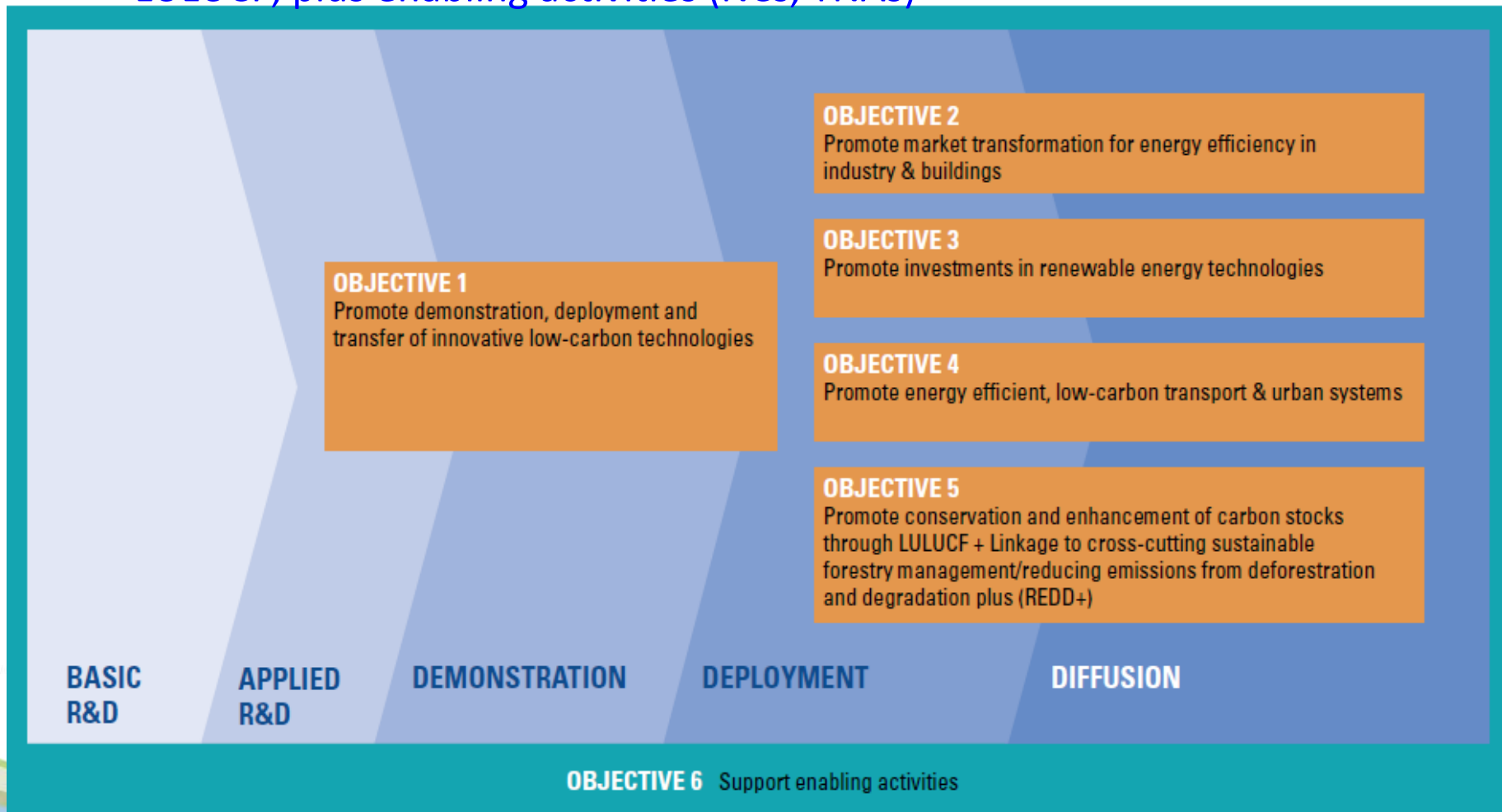
SCCF and LDCF  
LDCF: \$460M pledged  
SCCF: \$267M pledged  
Specific TT window in SCCF  
TT articulated as a priority

Poznan Strategic  
Program on Tech  
Transfer and  
Long-Term Program



# Tech Transfer Embedded in GEF Climate Change Strategy

- ✓ GEF-5 support address the continuum from applied R&D to diffusion
- ✓ \$1.26 billion for mitigation in GEF-5, \$250 million (20%) programmed
- ✓ Sectors: energy efficiency, renewable energy, transport, urban systems, LULUCF, plus enabling activities (NCs, TNAs)



# Special Climate Change Fund (SCCF)

## 4 windows under SCCF

- a. Adaptation (\$250M pledged, \$150M approved)
- b. Technology transfer (\$17M pledged, \$15M approved)
- c. Energy, transport, industry, agriculture, forestry and waste management (no donor contributions to date)
- d. Economic diversification (no donor contributions to date)

## Projects supported under windows a and b:

innovative irrigation systems, drought-resistant crops, climate resilient infrastructure, high-tech solution for data logging, alert systems, wetland and mangrove restoration, beach nourishment



Publication on Poznan Program (GEF 2010)  
downloadable from:  
<http://www.thegef.org/gef/node/3856>

## Thank you very much

For further information, please contact:

**Mitigation:** Chizuru Aoki  
Mitigation Coordinator  
Senior Technology Transfer Officer  
([caoki@thegef.org](mailto:caoki@thegef.org))

**Adaptation:** Bonizella Biagini  
Adaptation Coordinator  
Head, Adaptation Strategy and Operations  
([bbiagini@thegef.org](mailto:bbiagini@thegef.org))

