

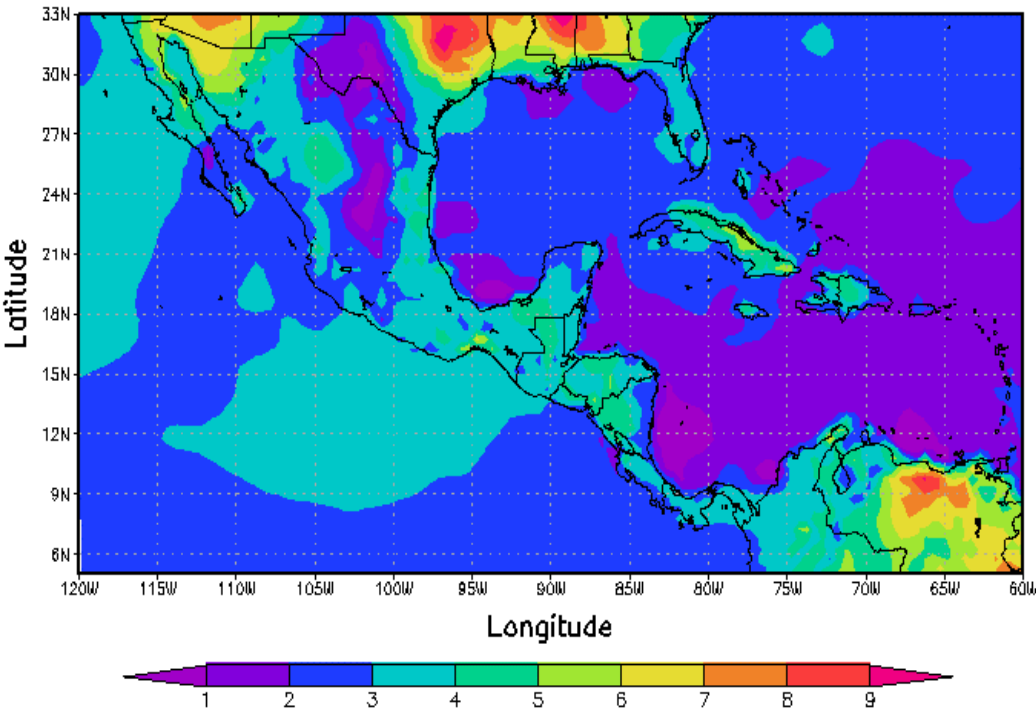
North-South collaboration on Climate Change Adaptation

Dr Adrian Butt
Defra

Adrian.Butt@defra.gsi.gov.uk



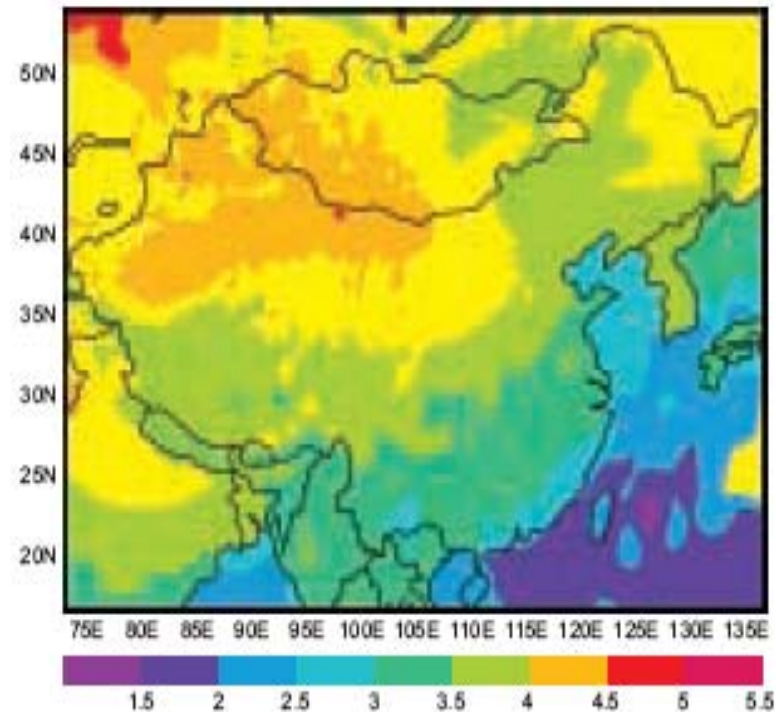
PRECIS



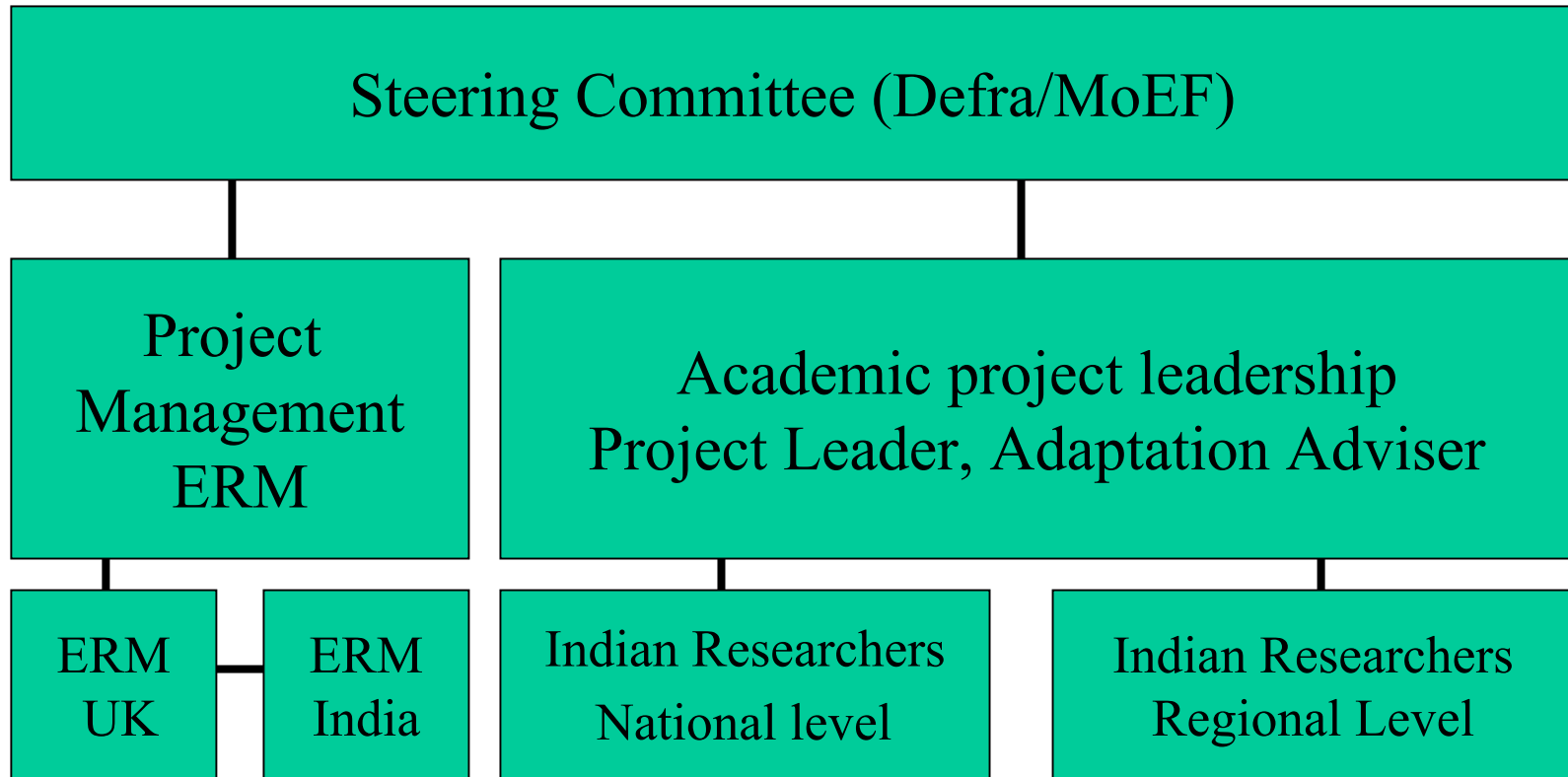
- Regional climate model, runs on a PC
- Over 200 researchers trained worldwide
- 2 workshops held in Caribbean
- Working on how to adjust to particular national situations

UK/China and UK/India projects

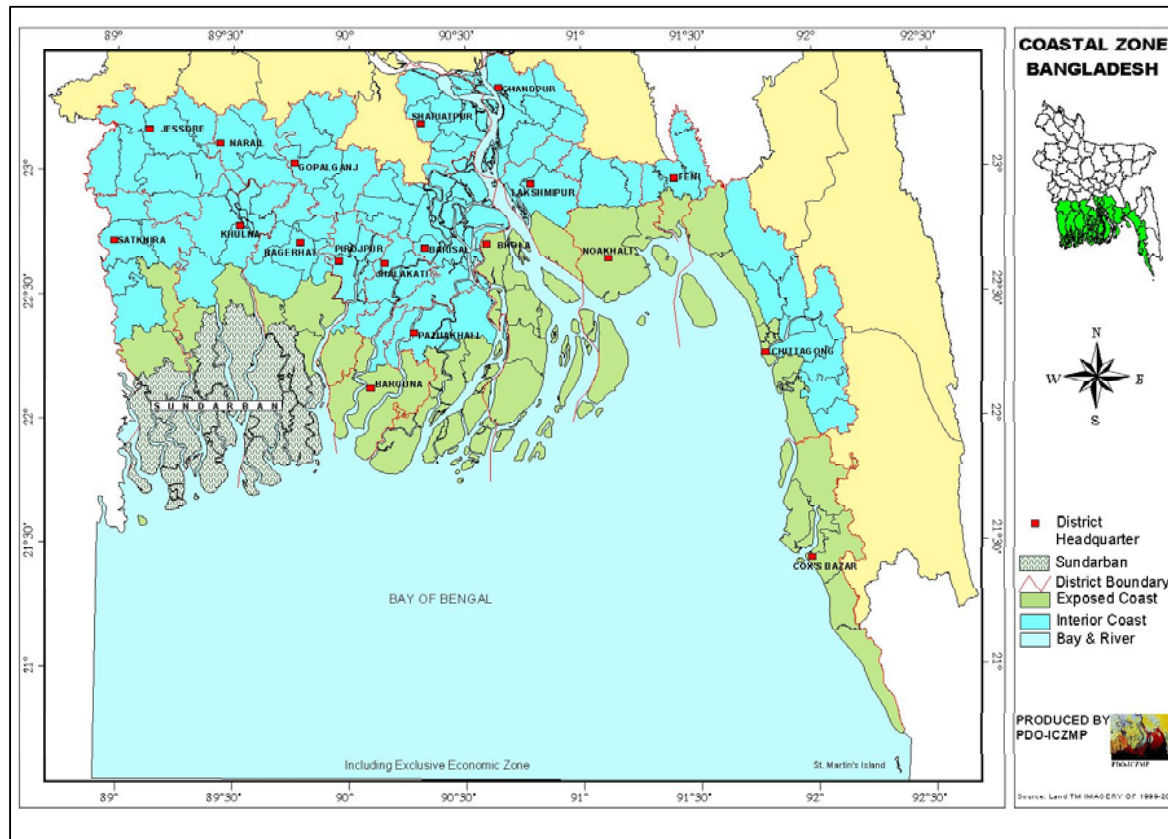
- National level impacts assessments
 - Climate modelling
 - Impact on specific sectors
 - Capacity building
- Regional case study
 - More detail
 - Options for adaptation



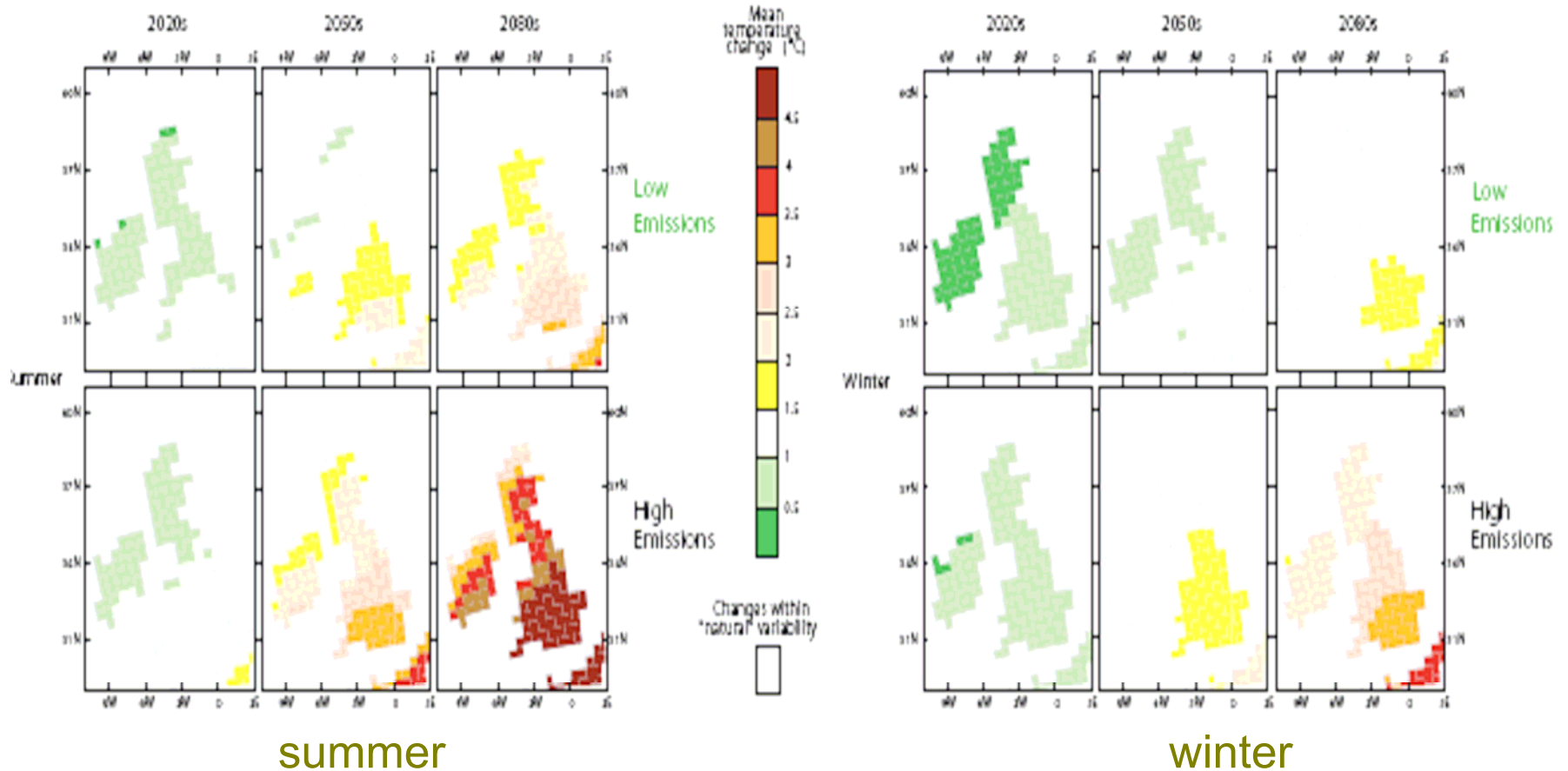
Bilateral Project Management Structure



Bilateral projects - Bangladesh



Future Climate Change in the UK



Change in average Summer
and Winter Temperature

UK approach to adaptation

- Strong bottom up element - adaptation responsibilities are for every-one – need to raise awareness
- Reliable information, scenarios, user friendly decision tools etc are essential
- Government role – awareness raising, facilitation, organisation, (legislation)
- Key aim is to mainstream coping with climate change

Commonwealth

- ***Public Awareness and Engagement of Stakeholders***
 - ***Youth***
 - ***Parliamentarians***
 - ***Others through advisory work & commonwealth meetings***
- ***Advocacy and Policy Networking***
- ***Technical Assistance***
- ***Modeling, Scenario Building and Risk Mapping***

UK-Overseas territories

The UK overseas territories ineligible for GEF funding.

UK currently exploring opportunities for the UK overseas territories to participate in regional partnerships such as those managed by the CCCCC.



Mainstreaming Adaptation to Climate Change

- GEF-funded project in 12 CARICOM countries aims to:
 - build capacity to assess vulnerability and risks associated with climate change
 - build capacity to reduce vulnerability to climate change
 - build capacity to access and use resources effectively to reduce vulnerability to climate change
 - develop and implement a programme of public education and outreach