

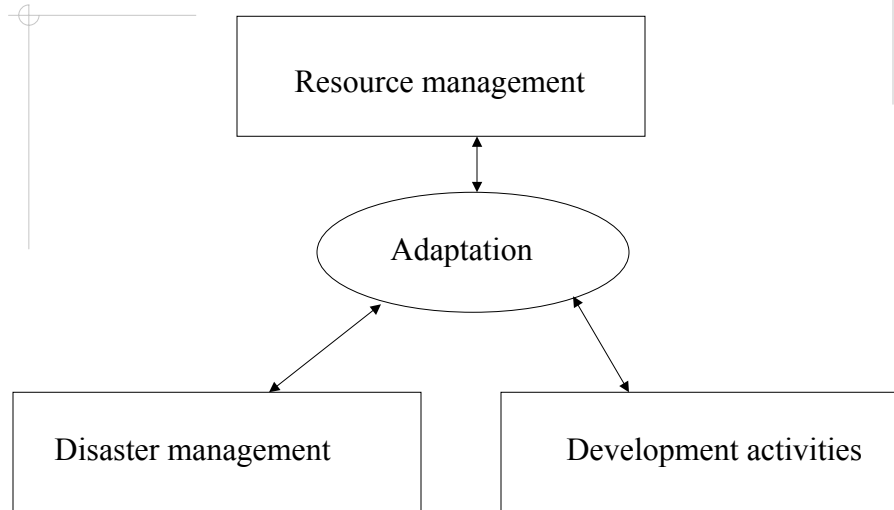
Climate risk and adaptation: importance of local coping strategies

Anand Patwardhan
Indian Institute of Technology-Bombay

Motivation

- ◆ Why is it important to understand local coping strategies?
 - In practice adaptation is often about managing climate risk
 - Need to understand how actors perceive, evaluate and respond to risk
 - Interactions between this process at different scales
 - ◆ Spatial: local – regional – national – international
 - ◆ Institutional: individual – family – community – regions (social networks?)
 - ◆ Temporal: time horizons of interventions, relief vs. recovery
- ◆ Ultimately will go to determine adaptive capacity

In practice, where does adaptation to climate change fit in?



Anand Patwardhan, IIT-Bombay

3

How can V&A assessment inform local coping strategies?

1. Prioritizing regions and modes of intervention:
 - What are the vulnerability hot-spots?
 - How do different risk management elements map onto vulnerability components, and how do we evaluate across these elements?
2. Evaluating current / planned local coping strategies from the viewpoint of adaptation to climate change:
 - Are anticipated project benefits at risk?
 - How (and to what extent) will the project lead to enhanced adaptive capacity?

Anand Patwardhan, IIT-Bombay

4

Identifying the highly vulnerable districts

Combinations of dimensions of vulnerability	Most Vulnerable Districts
Hazard	South 24 Parganas Nellore
Hazard + Exposure	South 24 Parganas Nellore North 24 Parganas
Exposure + Impacts	North 24 Parganas Jagatsinghpur
Hazard + Impacts	South 24 Parganas Nellore Jagatsinghpur
Hazard + Exposure + Impacts	South 24 Parganas Nellore North 24 Parganas Jagatsinghpur

Anand Patwardhan, IIT-Bombay

5

Risk management and vulnerability components

Hazard	Structural & non-structural measures
Exposure	Set-backs and coastal zone management
Impacts	Early warning, storm shelters, evacuation routes, insurance
Adaptive capacity	Linkage with overall developmental activities?

Anand Patwardhan, IIT-Bombay

6

Examples of how climate change might pose a challenge for local coping strategies

- ◆ **Baseline of hazard:**
 - Decadal-scale changes, influence of ENSO on occurrence
 - How useful is the 30-year climate normal?
- ◆ **Which characteristics of the hazard will be affected by climate change?**
 - Number of events & their seasonal / spatial distribution, type of events, event characteristics?
- ◆ **What is the interaction with sea level change and changes in coastal geomorphology?**

Anand Patwardhan, IIT-Bombay

7

Trends and variability

State	Trend(cyclone/100yr)		
	Depression	Storm	Sever Storm
WB	0.884*	-0.229	0.313*
Orissa	-0.979*	-0.925*	-0.011
AP	0.187	-0.345	0.54*
TN	0.0044	-0.154	0.116
Gujarat	0.532*	-0.074	-0.067

Note: The values with * sign are significant at 5% level

- ◆ No long-term trends in overall cyclone incidence, however, variations by state
- ◆ Decadal scale variation in spatial patterns of incidence
- ◆ Important to consider this with regard to the baseline and hazard characteristics and associated implications for project design

Anand Patwardhan, IIT-Bombay

8

How can the understanding and analysis of past and current local coping strategies help in adaptation to climate change?

- ◆ Developing and validating the underlying theories and conceptual frameworks for vulnerability & adaptation
 - This is an area where practice drives theory
 - We have made a start at creating an observational and empirical base, we now need to look at experiments
 - ◆ In practice this might mean pilot adaptation projects
- ◆ Cross-sectional and temporal analysis of past impacts can help in ground-truthing indicators for specific and generic adaptive capacity by looking at actual, past outcomes
 - Important, but depends critically on the availability of data
- ◆ Do we have mal-adaptation?
 - Hazard & exposure correlation

Some final remarks on what we may be trying to measure with indicators

- ◆ Inputs, process, outcomes
 - Number of beds / 1000 people
 - Process: state of the public health system?
 - Life expectancy
- ◆ Dynamics vs. system state
 - Most of the times we measure the latter
 - Education – Adult literacy (state of the system), or relative growth rates of male vs. female literacy (dynamics of the process)?
 - Replication of system innovations
 - Measuring attributes such as salience, perception, institutional and policy preparedness

Policy questions

- ◆ What are the limitations of local coping strategies?
 - Or, what is the coping range?
 - Limits of “autonomous” adaptation: adaptation may be neither automatic, nor successful
- ◆ How do we replicate successful or viable coping strategies?
 - Diffusion of system innovations (Amul, Grameen Bank)
- ◆ How do we create an environment in which local coping strategies will be identified, design and implemented more readily and effectively?
- ◆ How do we ensure synergies and resolve conflicts between local and regional or national processes and objectives?

Examples

- ◆ Disaster management focus on relief:
 - How quickly can the flow of economic goods and services be restored? – recovery vs. relief
- ◆ Linkage with development planning
 - Development planning authority is usually local
 - Past central – local conflicts (CRZ regulations)
- ◆ Linkage with development issues – baselines can change rapidly and in unanticipated and non-intuitive ways
 - Growth of the Internet – problem sometimes is not the lack of information, but the ability to act. Who will act – the state, NGO’s or private enterprise?