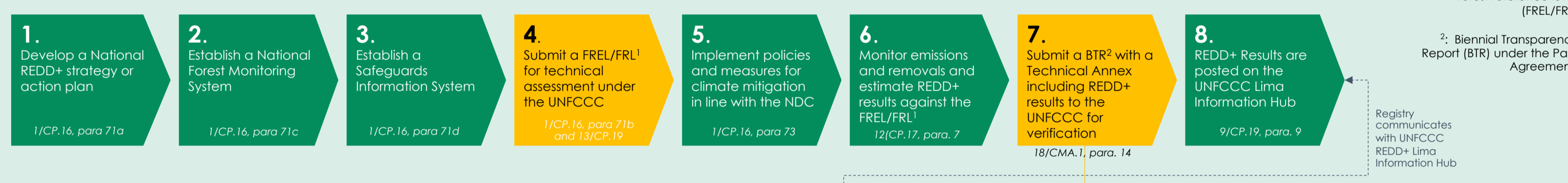
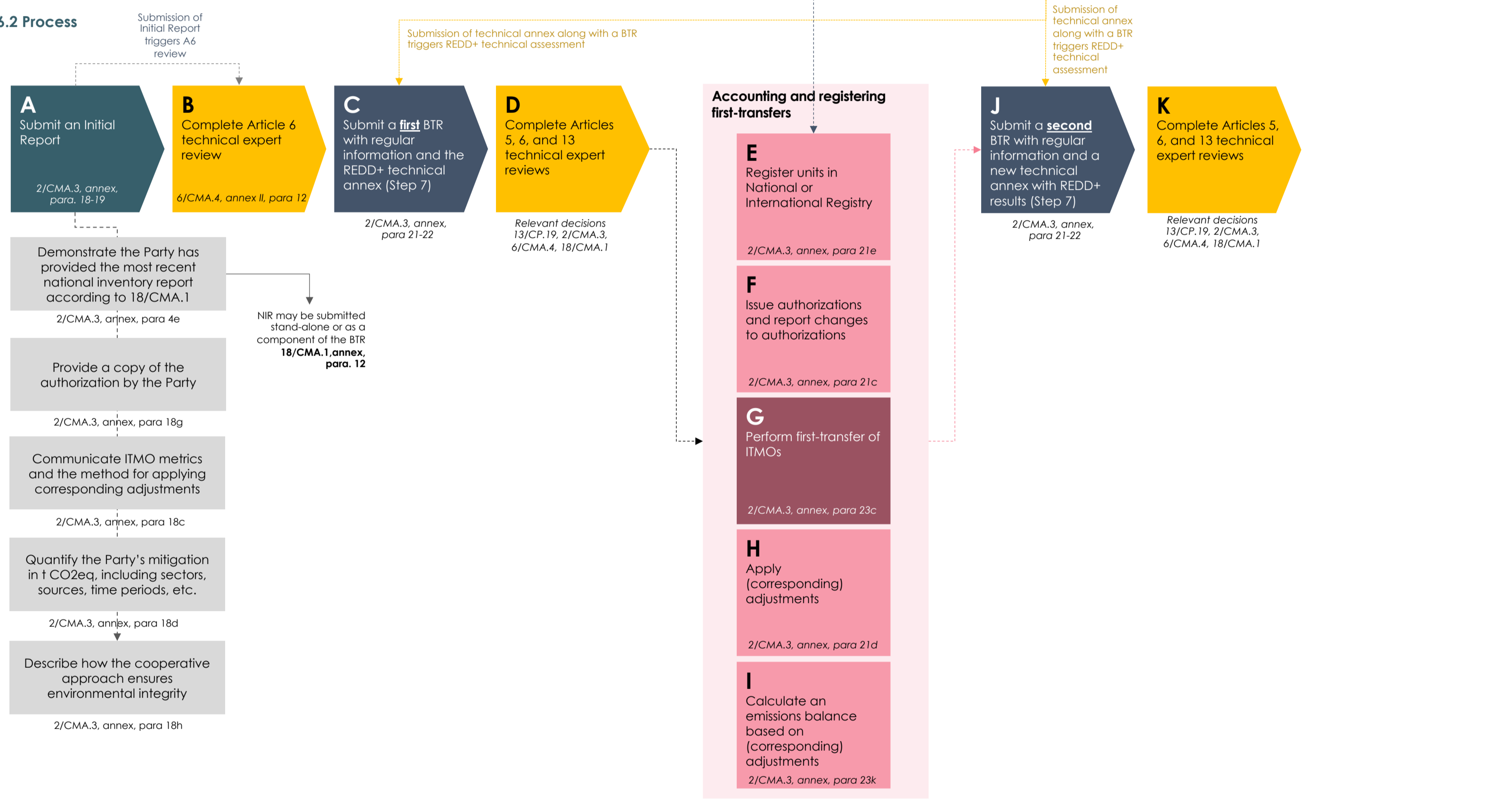


Article 5.2 Process



Article 6.2 Process



Article 6.2 participation requirements	Requirement	Reference
Each Party participating in a cooperative approach that involves the use of ITMOs shall ensure that its participation is consistent with this guidance and relevant decisions of the CMA 2/CMA.3, annex, paragraph 3	It is a Party to the Paris Agreement	2/CMA.3, annex, para 4a
	It has prepared, communicated, and is maintaining an NDC	2/CMA.3, annex, para 4b
	It has arrangements in place for authorizing ITMOs	2/CMA.3, annex, para 4c
	It has arrangements in place for tracking ITMOs	2/CMA.3, annex, para 4d
	It has provided the most recent national inventory	2/CMA.3, annex, para 4e
	Parties report on how they are fulfilling the participation requirements as part of regular information (via BTRs) – Steps C and J above. 2/CMA.3, annex I, paragraph 21a	
Regular information is within the scope of the Article 6 Technical Expert Review, including how Parties fulfill the participation requirements – Steps B, D, K above 6/CMA.4, annex II, paragraph 3b		

Achieving consistency with CMA decisions	Requirement	Reference
"Information submitted by a participating Party is considered to be consistent with CMA guidelines when all of the following requirements are met": 6/CMA.4, annex II, paragraph 3	The information is complete, transparent, and consistent with CMA decisions	6/CMA.4, annex II, para. 3a
	The information is consistent across the different reporting requirements	6/CMA.4, annex II, para. 3b
	Including: • Initial Report • Updated Initial Report • Annual Information • Regular information • Structured summary	
	The information is consistent across all Parties participating in the same cooperative approach	6/CMA.4, annex II, para. 3c