



GIZ as Implementer for Meaningful Climate Action

UNFCCC Asia Investment Forum, Seoul, Nov. 28, 2024

Agenda

1. GIZ at a glance
2. Climate Portfolio
3. Exemplary project: EcoFDM in the Lower Mekong Basin, (in cooperation with MRC)
5. What we offer - as Climate Finance Support Service Provider



Selected business figures (2023) and what we stand for:



» We support the German Government in achieving its objectives in the field of **international cooperation for sustainable development**.

» Our **vision** is to create a **future worth living**, around the world.

» As a **public-benefit federal enterprise under private law** we have a taxable (**GIZ International Services**) and a **public-benefit** business area.

What we do



Advisory services and project implementation



International capacity development



Networking, dialogue and mediation



Management and logistics

What sets us apart

Made in Germany and the World

Expertise, quality
and innovation

Reliability

Reliable and transparent financial
and project management

Experience

Decades of experience and expertise
in over 120 countries



A one-stop shop

Advisory services and
implementation

Networks

With the political and business
sectors and civil society worldwide

Ability to act swiftly

Especially in crises and
conflict-affected areas

Climate Portfolio: Commissioning and Financing Partners



Euroclima es un programa financiado por la Unión Europea
- About Euroclima



Die Internationale Klimaschutzinitiative
Internationale Klimaschutzinitiative (IKI)



Green Climate Fund



Bundesministerium für
wirtschaftliche Zusammenarbeit
und Entwicklung



Mitigation Action
Facility

Mitigation Action Facility



Bundesministerium
für Umwelt, Naturschutz, nukleare Sicherheit
und Verbraucherschutz



Bundesministerium
für Wirtschaft
und Klimaschutz



Auswärtiges Amt



ASEAN-German Climate Action Programme

Project Background

- Main Counterpart
ASEAN Secretariat, Environment Division (ED)
- Commissioning Ministry
BMZ - German Federal Ministry for Economic Cooperation and Development
EU Team Europe Initiative
- Duration and budget
3 Years (07/2022 - 06/2026);
9 Million Euro



Project Background and Outputs

To improve cooperation within the Association of Southeast Asian Nations (ASEAN) on implementing ambitious climate policies.

Output 1

Strengthening the institutional and individual capacity of the ASEAN bodies relevant to climate policy

Output 2

Enhancing ASEAN's visibility in the international dialogue on climate policy and

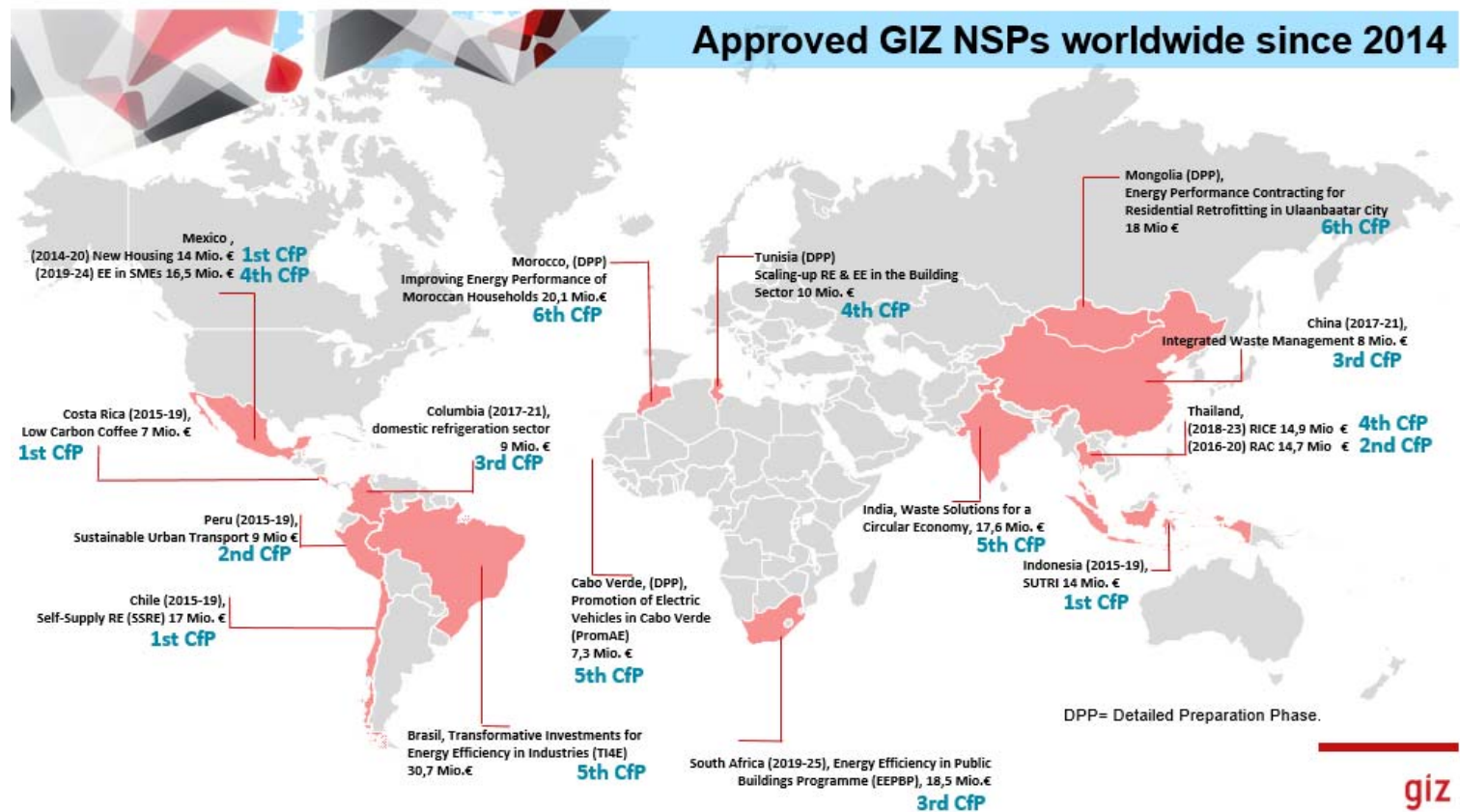
Output 3

Improving the capabilities of ASEAN and its member states to interlink regional and national climate policies



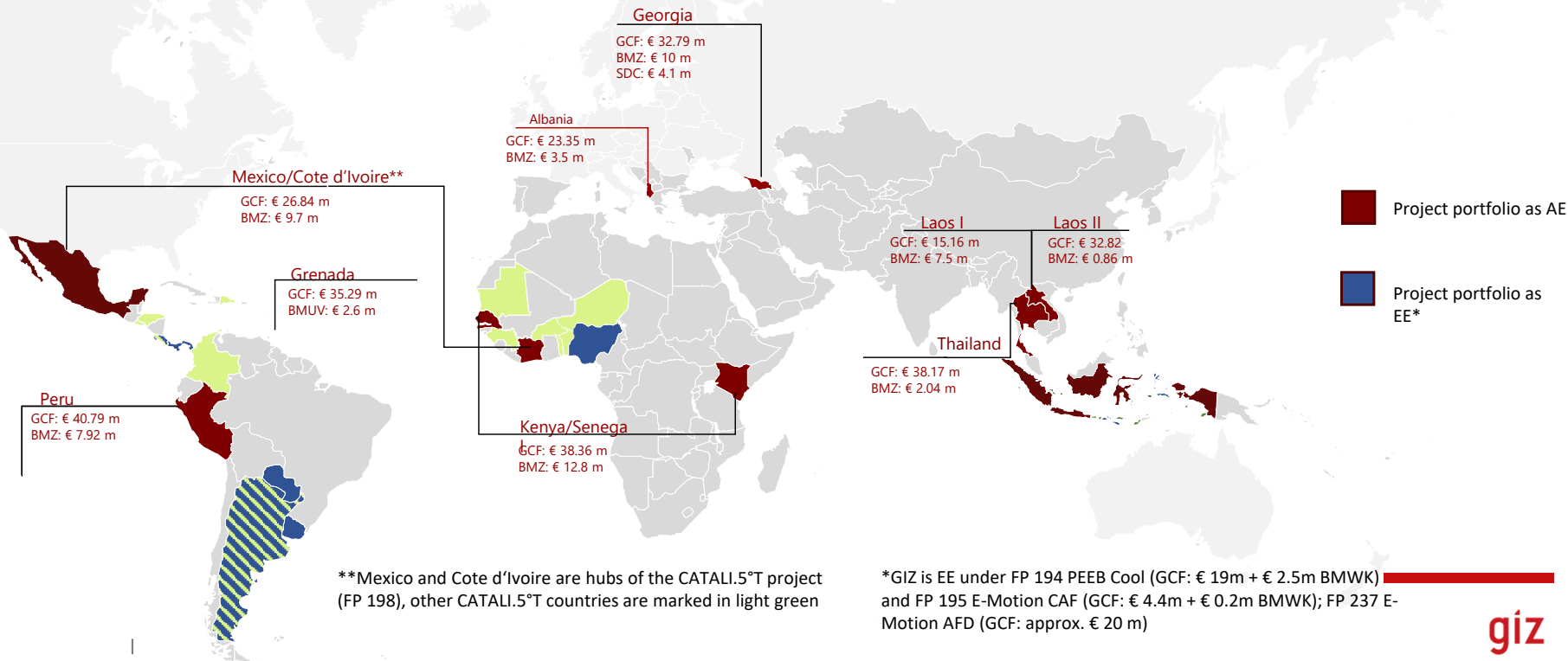
Climate Portfolio Mitigation Action Facility (MAF):

Currently 15 NAMA Support Projekte (NSP) all over the Global South on diverse topics such as Energy, Transportation, Manufacturing Industries, Agriculture, etc.



GIZ as GCF partner: Project portfolio (July 2024)

9 Projects as Accredited Entity
3 Projects as Executing Entity



GIZ's GCF portfolio and pipeline overview **as of Nov 2024**

Initial resource mobilization (IRM) →
GCF-1, GCF-2, GCF-3 programming periods

- Current portfolio of 13 projects (10 GIZ as AE; 3 GIZ as EE)
- Dedicated capacity
- Presence & implementation structure in 120 countries

Emerging opportunities & potential project ideas:

- Ecuador (ecosystem)
- Egypt (early warning)
- Iraq (urban resilience)
- Lesotho (water-food-energy nexus)
- ...

Further new ideas and emerging opportunities on a rolling basis

Grenada [FP059](#) (B.19, 2018)
Clean cooking [FP103](#) (B.22, 2019)
[Laos-I](#) [FP117](#) (B.24, 2019)

Georgia [FP132](#) (B.26, 2020)
CATAL1.5°T [FP198](#) (B.34, 2022)
[Laos-II](#) [FP200](#) (B.35, 2023)
[Thai Rice](#) [FP214](#) (B.37, 2023)
AFD PEEB Cool [FP194](#) (GIZ as EE)
CAF E-MOTION [FP195](#) (GIZ as EE)

Peru [FP226](#) (B.38, 2024)
Albania [SAP041](#) (B.39, 2024)
[AFD E-Motion](#) [FP 237](#) (B.39, GIZ as EE)
[Indonesia](#) [FP248](#) (B.40, 2024)
Madagascar (B.42, 2024)

Burkina Faso SAP (B.4X, 2025)
Togo health (B.4X, 2025)

Cameroon (2026/27)
Central Asia (2026/27)

Algeria SAP (2026/27)
[T EcoFDM in the LMB](#) (2027)
CATAL1.5°T Add-On (Brazil, MENA, SSA (2027)

IRM

2015-2019

GCF-1

2020-2023

GCF-2

2024-2027

GCF-3

2028-2031

- 2016 GIZ accreditation
- **Dedicated capacity:** units for readiness, business development, implementation

- **Standardization** for enhanced efficiency, **learning**, quality assurance and risk management
- **2023 GIZ re-accreditation**

- **Complementary partnerships**
- Cont.d lessons learnt and process optimization
- Knowledge transfer

Note:
GIZ as AE: GIZ as lead Accredited Entity
GIZ as EE: GIZ as executing entity of another Accredited Entity



Transboundary Ecosystem-based Flood and Drought Management for Climate Change Adaptation in the Lower Mekong Basin (EcoFDM)

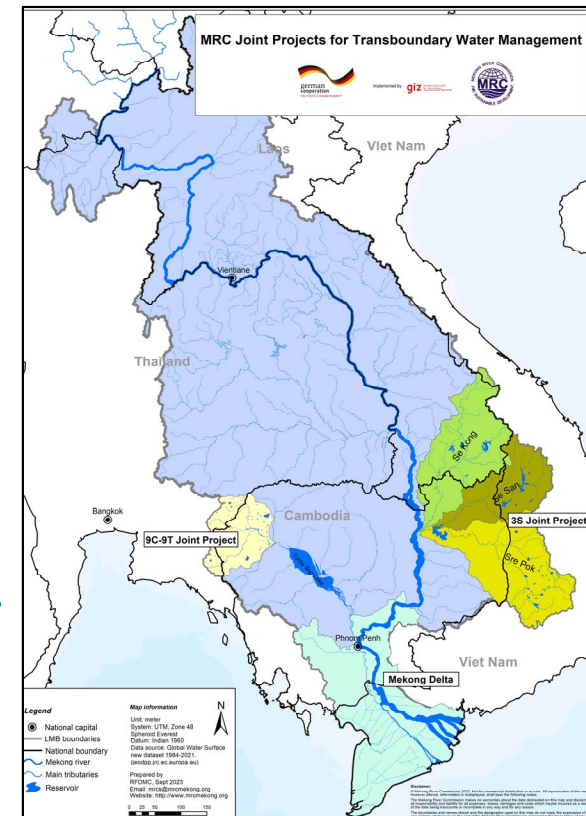
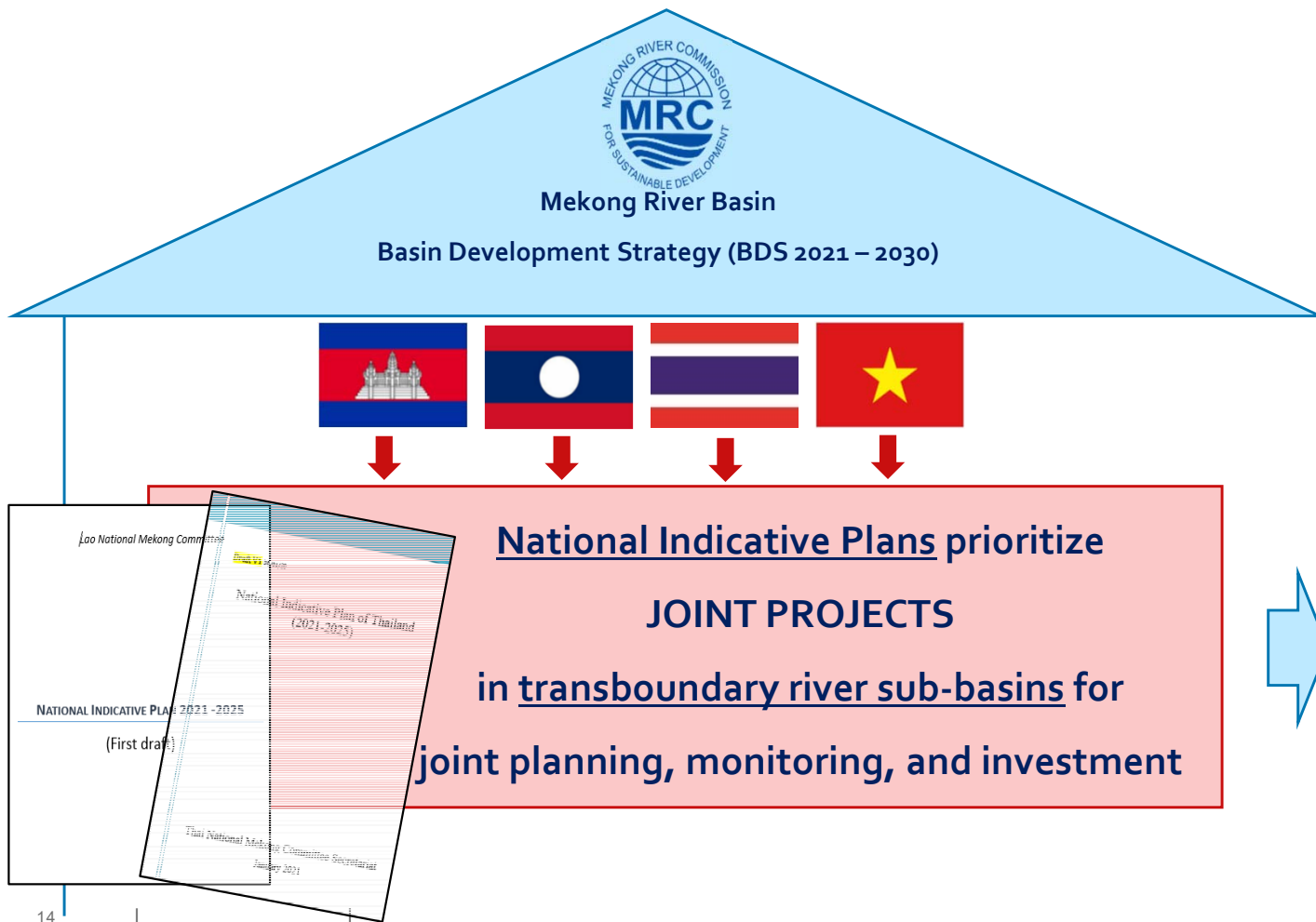
GCF project idea

giz Deutsche Gesellschaft
für Internationale
Zusammenarbeit (GIZ) GmbH

In cooperation with



Transboundary Water Cooperation Joint Priorities



Climate Change Impacts on Water security in the Lower Mekong Basin

- Increased average annual basin-wide **temperatures**; by 2060 could be + 3.3°C
- Spatial and temporal variations in rainfall across the basin.
- More **frequent and intense rainfall** is expected in some areas.
- More **frequent and longer drought spells** are expected in some areas.
- Impacts on seasonal flood and drought patterns are already felt.

Annual	Low emission (RCP2.6)		Medium emission (RCP4.5)		High emission (RCP8.5)	
	2030	2060	2030	2060	2030	2060
Drier overall	0.5	0.4	0.9	1.6	1.5	3.3
Increased seasonal variability	0.5	0.4	0.9	1.5	1.5	3.1
Wetter overall	0.5	0.4	0.8	1.5	1.4	3.1



- Overall **increased flood and drought risk** in the LMB.
- Serious negative impacts on people's lives, livelihoods and food & water security.

Response:

Transboundary Ecosystem-based Flood and Drought Management

- Mitigate flood and drought impacts across borders
- Increase natural water storage and reduce erosion
- Restore ecosystems

Impact Potential: Transboundary EcoFDM

Four Countries:



MRC: Transboundary Enabling Environment

Indirect beneficiaries:

Whole Lower Mekong Basin > **70 million people**;

➤ *Direct Beneficiaries: ~ 1,000,000 people tbc (20 proje*

Hectares of areas brought under restoration:

Total area of the Lower Mekong Basin: **618.312 km²**



9C-9T sub-basin

1,4 M people
15,000 km²

Mekong Delta

19,4 M people
48,000 km²

3S sub-basin

3,4 M people
78,000 km²

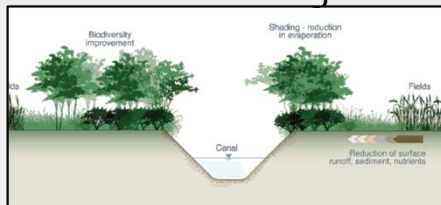
➤ *Direct impacted area: tbc*

Proposed Project Components

Component 1

Investment in ecosystems/
green water infrastructure

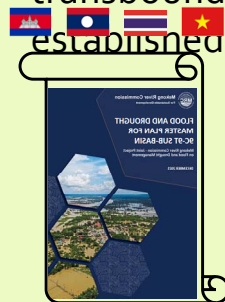
- Increased resilience of the most vulnerable people and ecosystems to flood and drought.
- EcoFDM adaptation measures implemented on the ground.
- Capacity development and awareness raising.



Component 2

Transboundary regulatory and
financial framework

- National governments endorse transboundary legislative frameworks (Masterplans).
- Sustainable financing mechanisms to implement transboundary EcoFDM are established.



**Joint
Financing**



**Joint
Planning**

Component 3

Knowledge uptake and
mainstreaming

- MRC transboundary knowledge hub supplies lessons learnt and developed technical guidance.
- National governments mainstream guidelines into national regulations.
- Matchmaking platform for partnering up with the private sector.



GIZ Accreditation profile

Entity Type:	NATIONAL	REGIONAL	INTERNATIONAL	
Total Project Volume:	MICRO up to USD 10m	SMALL up to USD 50m	MEDIUM up to USD 250m	LARGE above USD 250m
Scope:	PROJECT MANAGEMENT	GRANT AWARDING	ON-LENDING/ BLENDING	
Environmental and Social Risk Category:	HIGH (A)	MEDIUM (B)	LOW (C)	

- **GIZ became first accredited by the GCF Board in 2016 and recently reaccredited for another 5 years term.**





How do we engage with GCF?

GCF units within GIZ

Partnering for Readiness – PfR

- **GIZ as GCF Readiness Delivery Partner**
- Supports partner countries to build capacities of national designated authorities (NDA) and direct access entities (DAE)
- Works with GCF on strategic relevant global products (studies, trainings, etc.)


GCF Business Development Unit

- GCF Business development
- Project development for GIZ as AE
- Support and Advisory to partners when GIZ is EE

GCF Oversight

- Overseeing project implementation as AE
- Ensuring efficient and effective delivery of the project/programme, e.g. risk management, monitoring of and reporting on performance and compliance

GLZ's unique selling point within the landscape of GCF partners



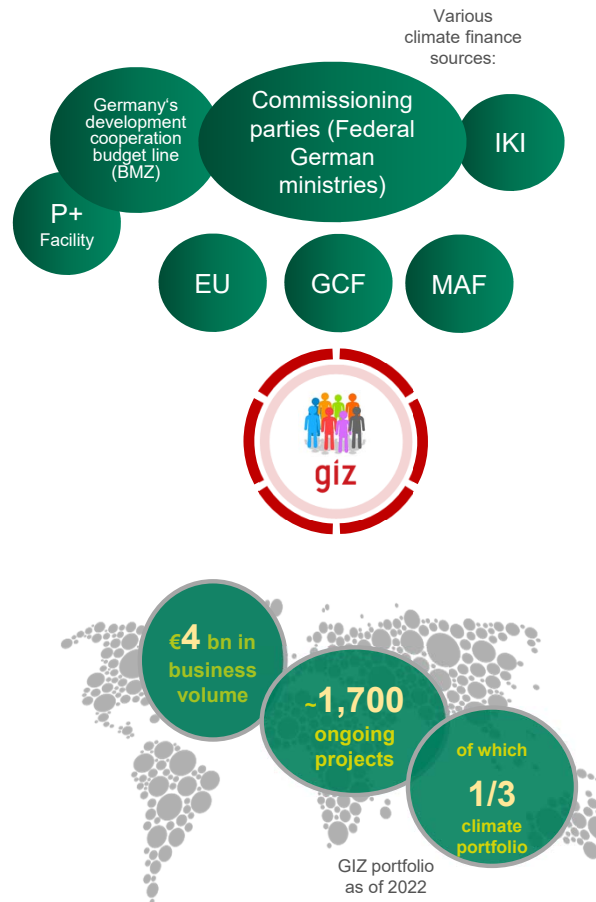

Experience: decades of expertise, fostering innovation and knowledge transfer




Country ownership: presence in 120 countries, incl. in partner structures & driven by countries' needs and priorities




Convening power & networking: with political and business spheres and civil society worldwide

Reliability: rigorous quality assurance, safeguards, and financial and project mgt (compliance, risk, adaptive mgt)



A one-stop shop: technical expertise + implementation structure: blend of capacity building, technical assistance, and grant intermediation



Act as an enabler: including in crises and conflict-affected areas & policy and institution building and, enabling environment

What we offer:

- ✓ Readiness support
- ✓ Project Development and Implementation as AE
- ✓ Partnership with DAEs & Reg. AEs, delivering e.g. TA as EE and supporting the project development and implementation
- ✓ ...





**Deutsche Gesellschaft für
Internationale Zusammenarbeit (GIZ) GmbH**

Registered offices
Bonn and Eschborn, Germany

Friedrich-Ebert-Allee 32 + 36
53113 Bonn, Germany
T +49 228 44 60 - 0
F +49 228 44 60 - 17 66

Dag-Hammarskjöld-Weg 1 - 5
65760 Eschborn, Germany
T +49 61 96 79 - 0
F +49 61 96 79 - 11 15

E info@giz.de
I www.giz.de