

# Climate Change 2013: The Physical Science Basis

Working Group I contribution to the IPCC Fifth Assessment Report

## Overview of the IPCC WGI Report

Thomas Stocker & Qin Dahe  
259 Authors from 39 Countries  
WGI TSU Team

© Yann Arthus-Bertrand / Altitude



Key SPM Messages

# 19 Headlines

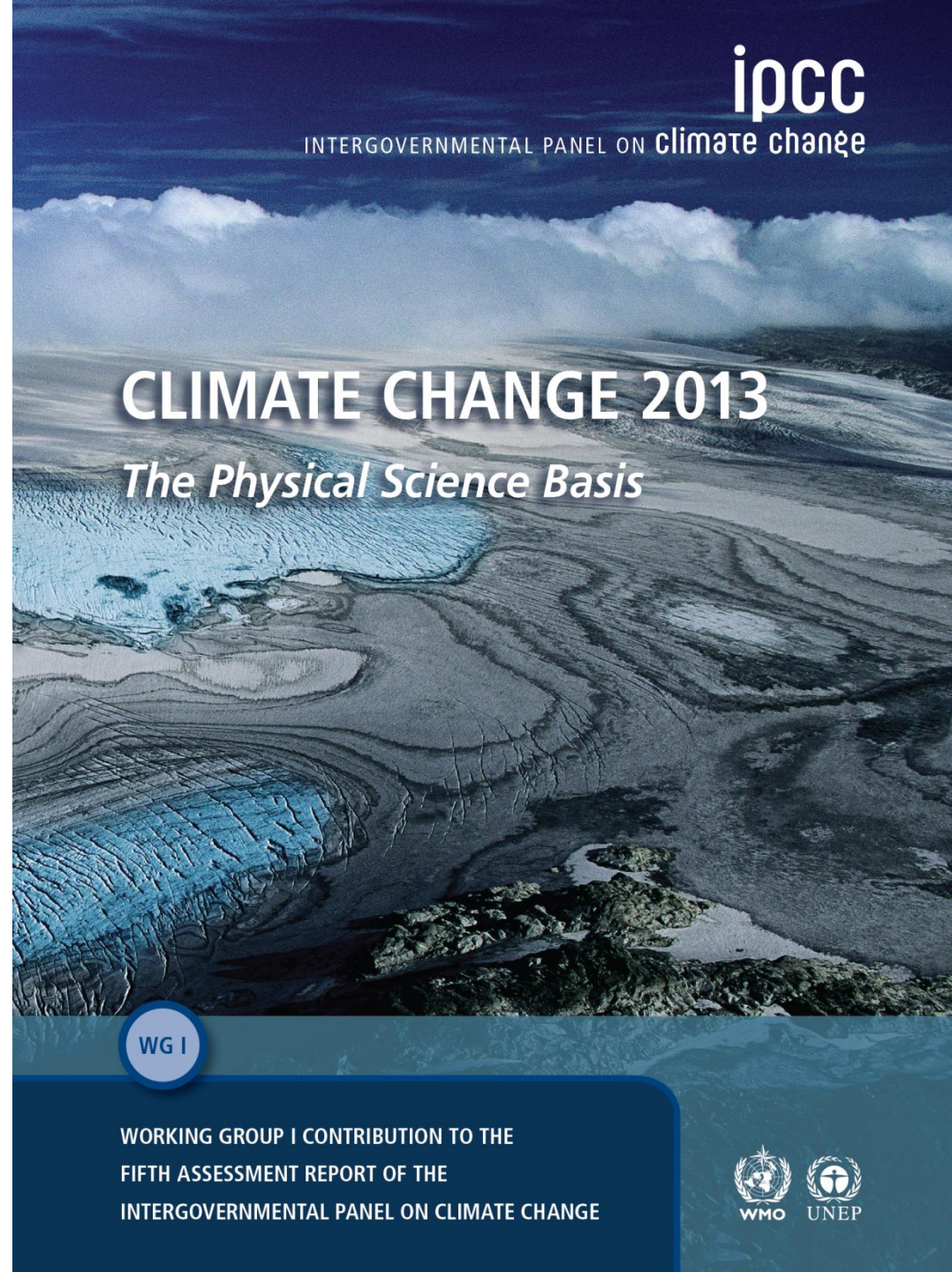
on less than 2 Pages

Summary for  
Policymakers

ca. 14,000 words

14 Chapters, Atlas

> 1,140,000 words



ipcc  
INTERGOVERNMENTAL PANEL ON climate change

## CLIMATE CHANGE 2013

*The Physical Science Basis*

WG I

WORKING GROUP I CONTRIBUTION TO THE  
FIFTH ASSESSMENT REPORT OF THE  
INTERGOVERNMENTAL PANEL ON CLIMATE CHANGE





Observation

Ch 2, 3, 4, 5

Understanding

Ch 6, 7, 8, 9, 10

Future

Ch 11, 12, 13, 14

Atlas of Regional Change

ipcc

INTERGOVERNMENTAL PANEL ON climate change

# CLIMATE CHANGE 2013

*The Physical Science Basis*

WG I

WORKING GROUP I CONTRIBUTION TO THE  
FIFTH ASSESSMENT REPORT OF THE  
INTERGOVERNMENTAL PANEL ON CLIMATE CHANGE



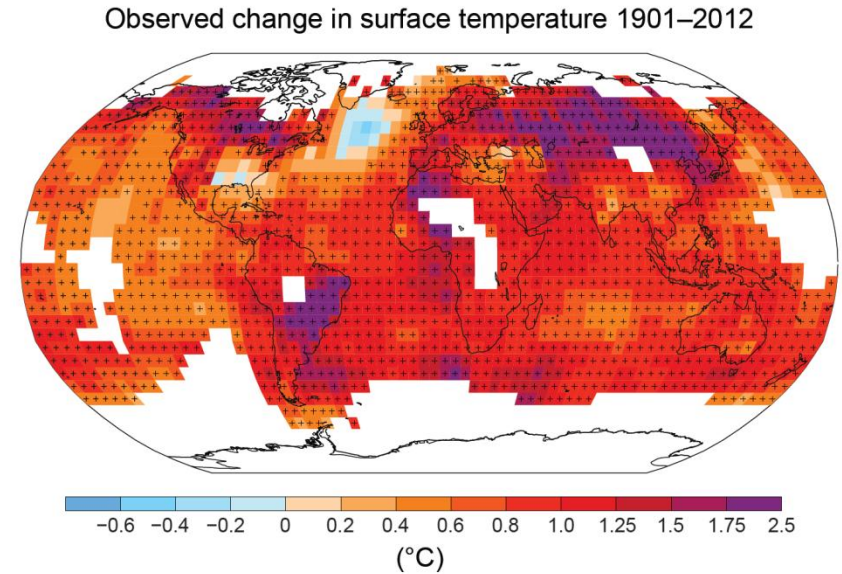
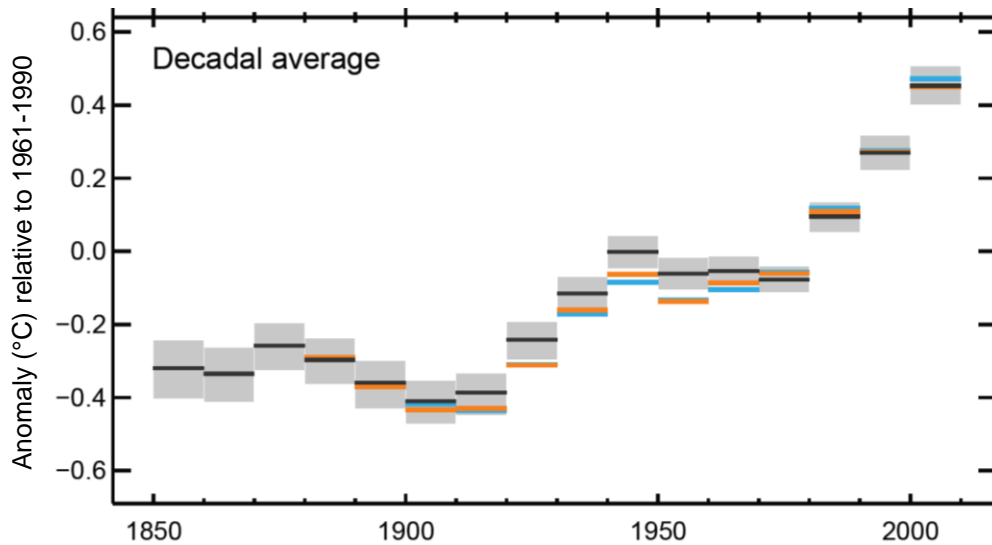


Fig. SPM.1

Warming of the climate system is unequivocal, and since the 1950s, many of the observed changes are unprecedented over decades to millennia.

## Change in upper ocean temperature (°C)

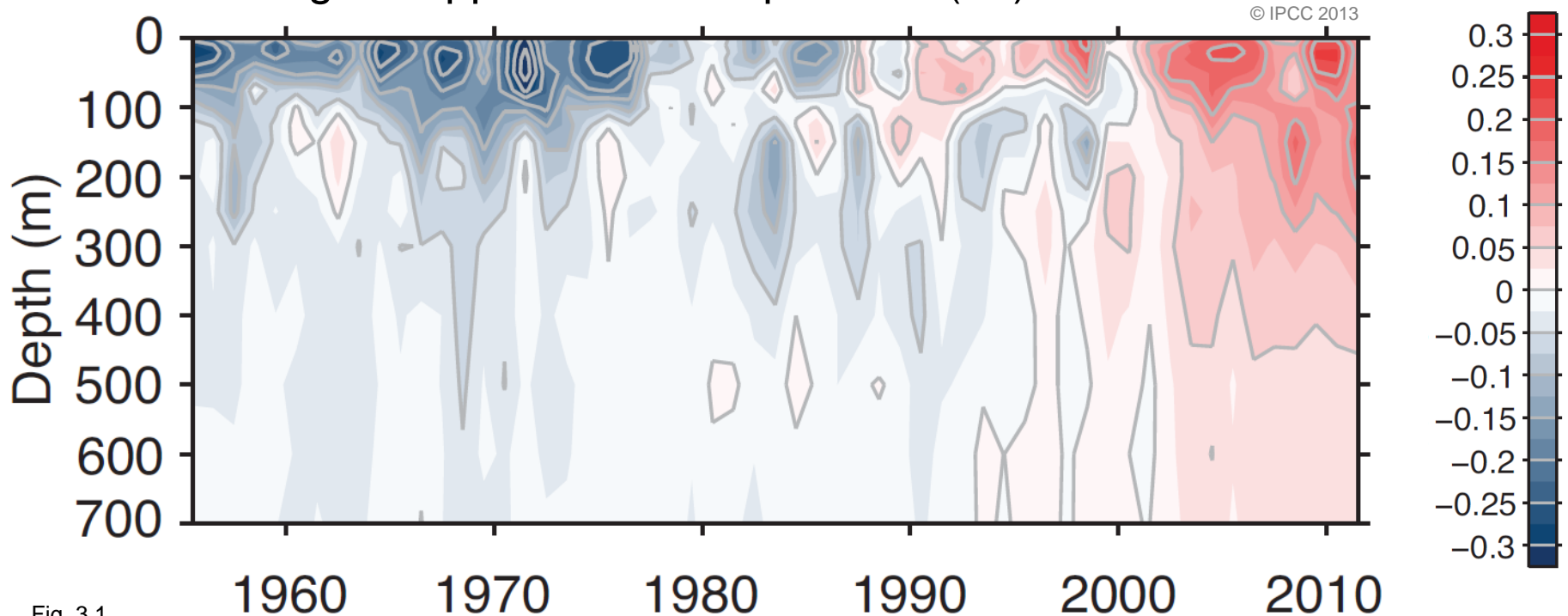
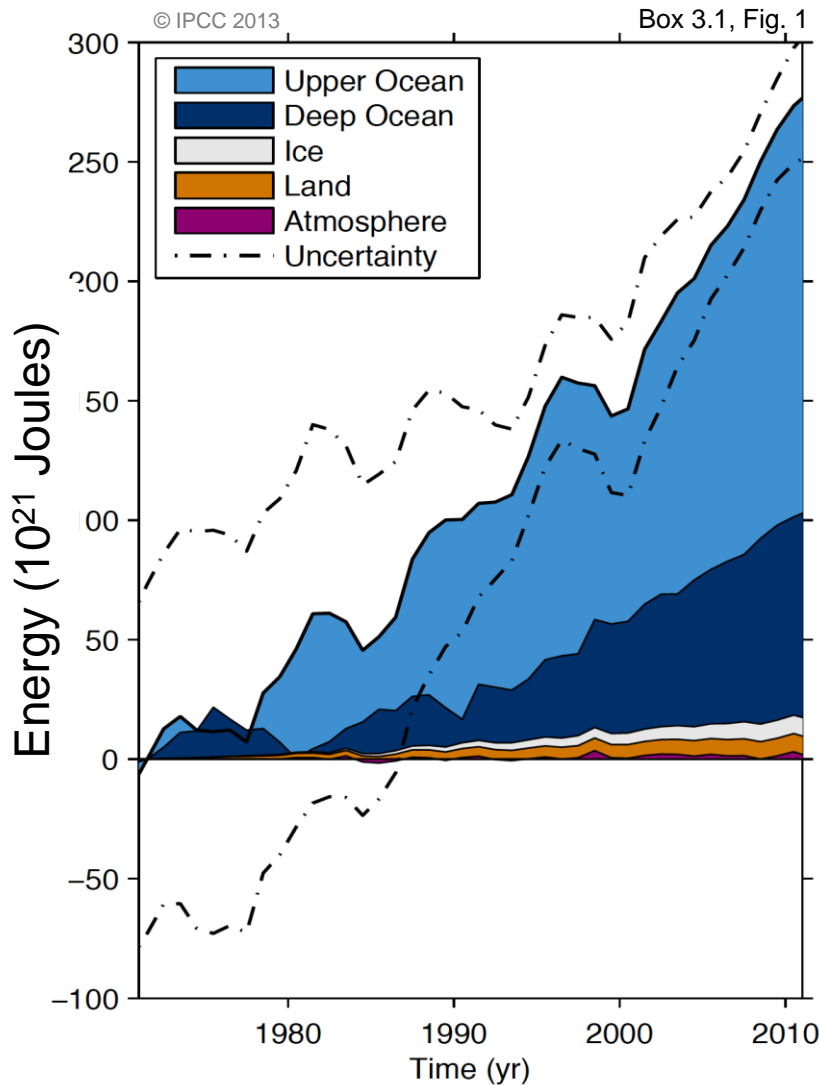


Fig. 3.1

It is *virtually certain* that the upper ocean (0-700 m) warmed from 1971 to 2010, [...]. It is *likely* that the ocean warmed between 700 and 2000 m from 1957 to 2009.





Ocean warming dominates the increase in energy stored in the climate system, accounting for more than 90% of the energy accumulated between 1971 and 2010 (*high confidence*).

Observation

Ch 2, 3, 4, 5

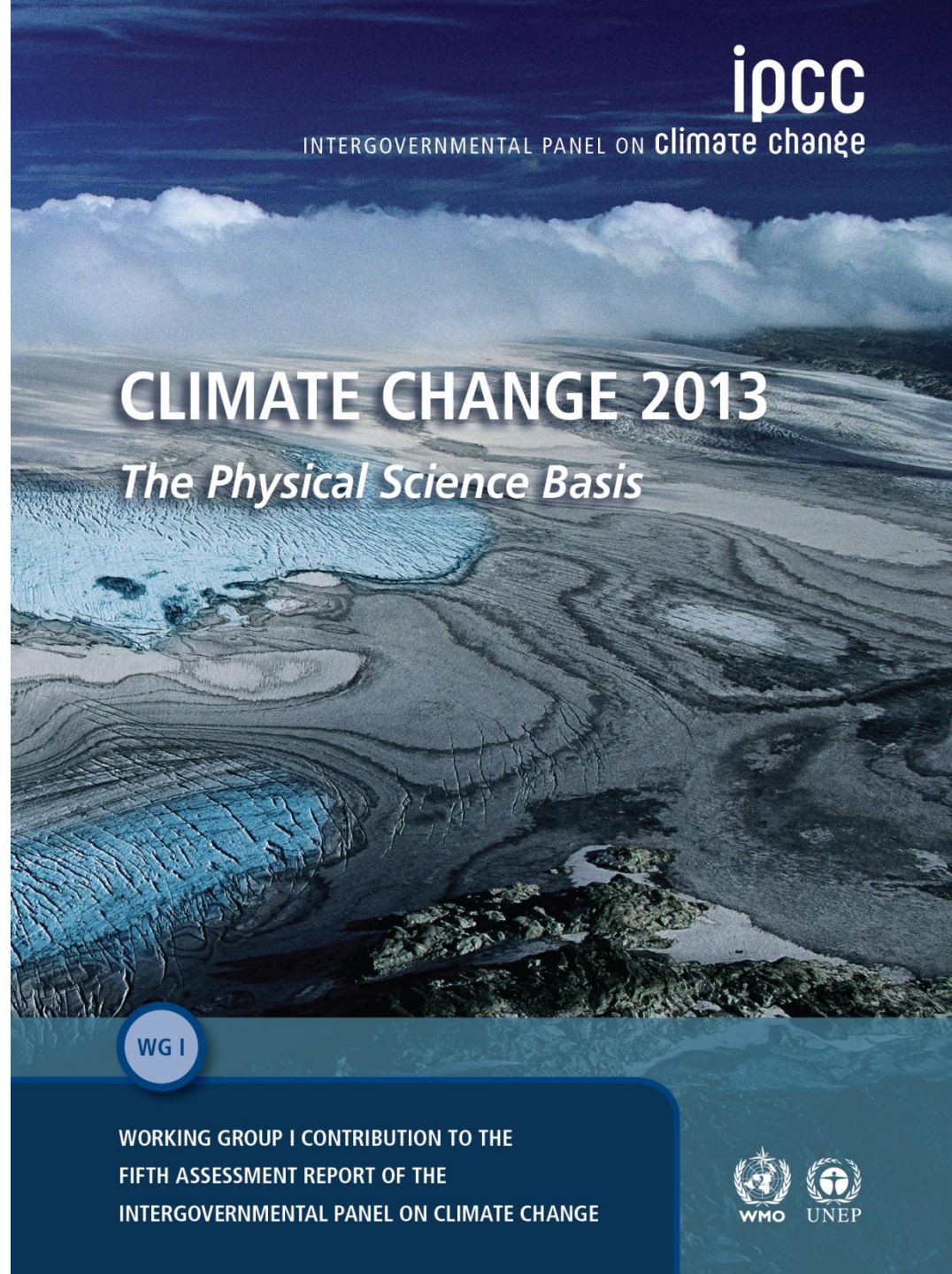
Understanding

Ch 6, 7, 8, 9, 10

Future

Ch 11, 12, 13, 14

Atlas of Regional Change



ipcc

INTERGOVERNMENTAL PANEL ON climate change

# CLIMATE CHANGE 2013

*The Physical Science Basis*

WG I

WORKING GROUP I CONTRIBUTION TO THE  
FIFTH ASSESSMENT REPORT OF THE  
INTERGOVERNMENTAL PANEL ON CLIMATE CHANGE



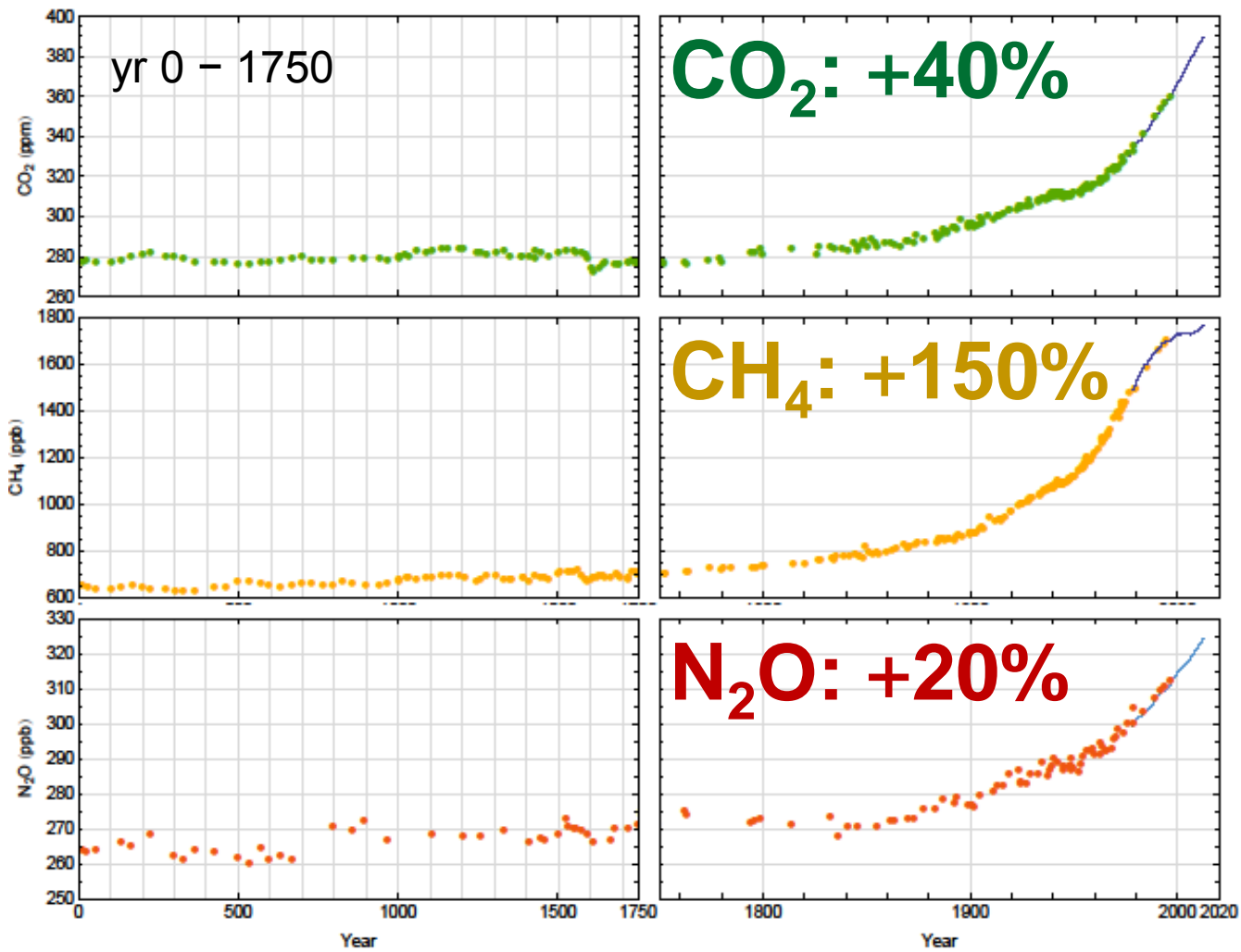


Fig. 6.11

The atmospheric concentrations of carbon dioxide, methane, and nitrous oxide have all increased since 1750 due to human activity.



**CO<sub>2</sub> provides largest RF**

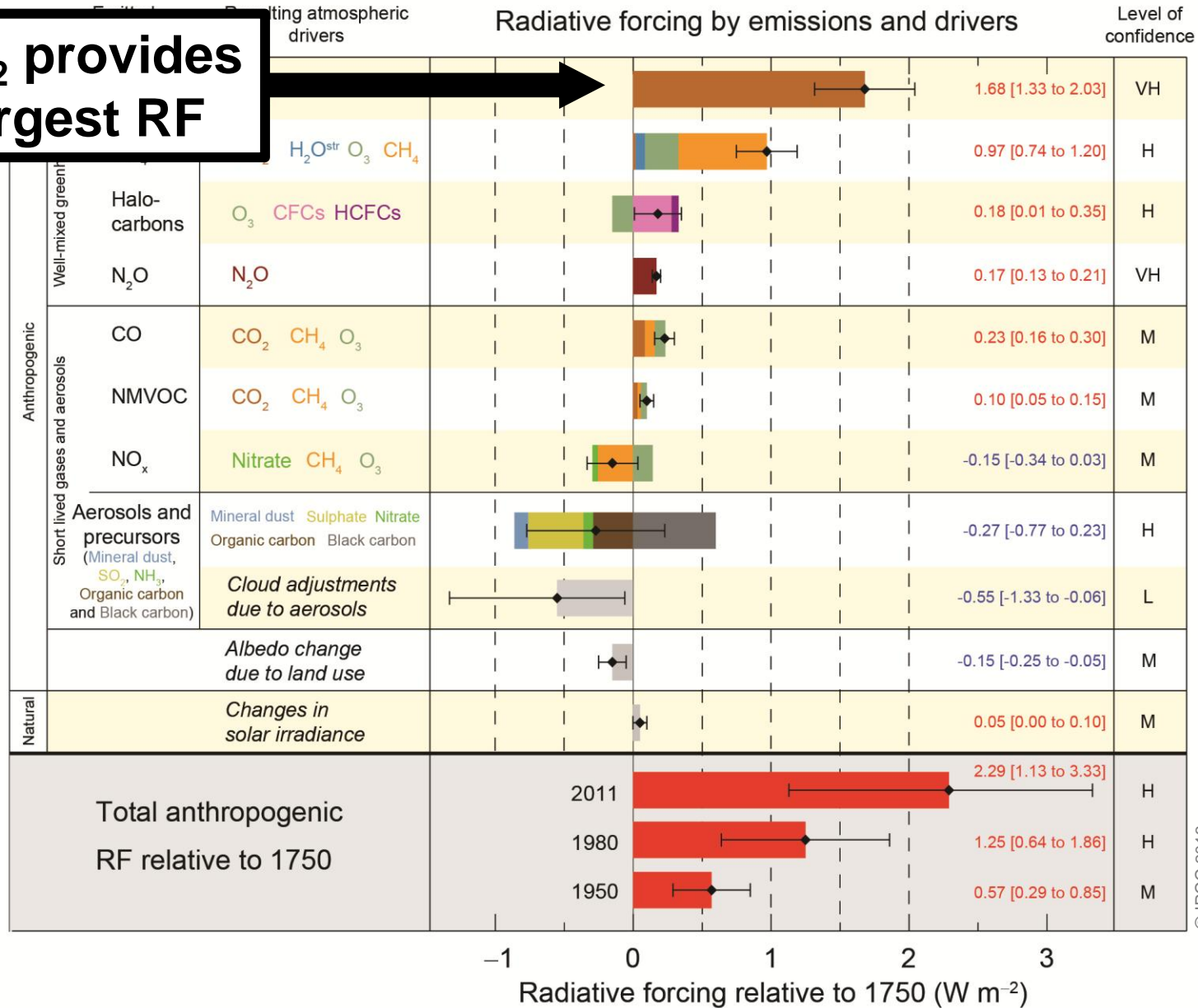
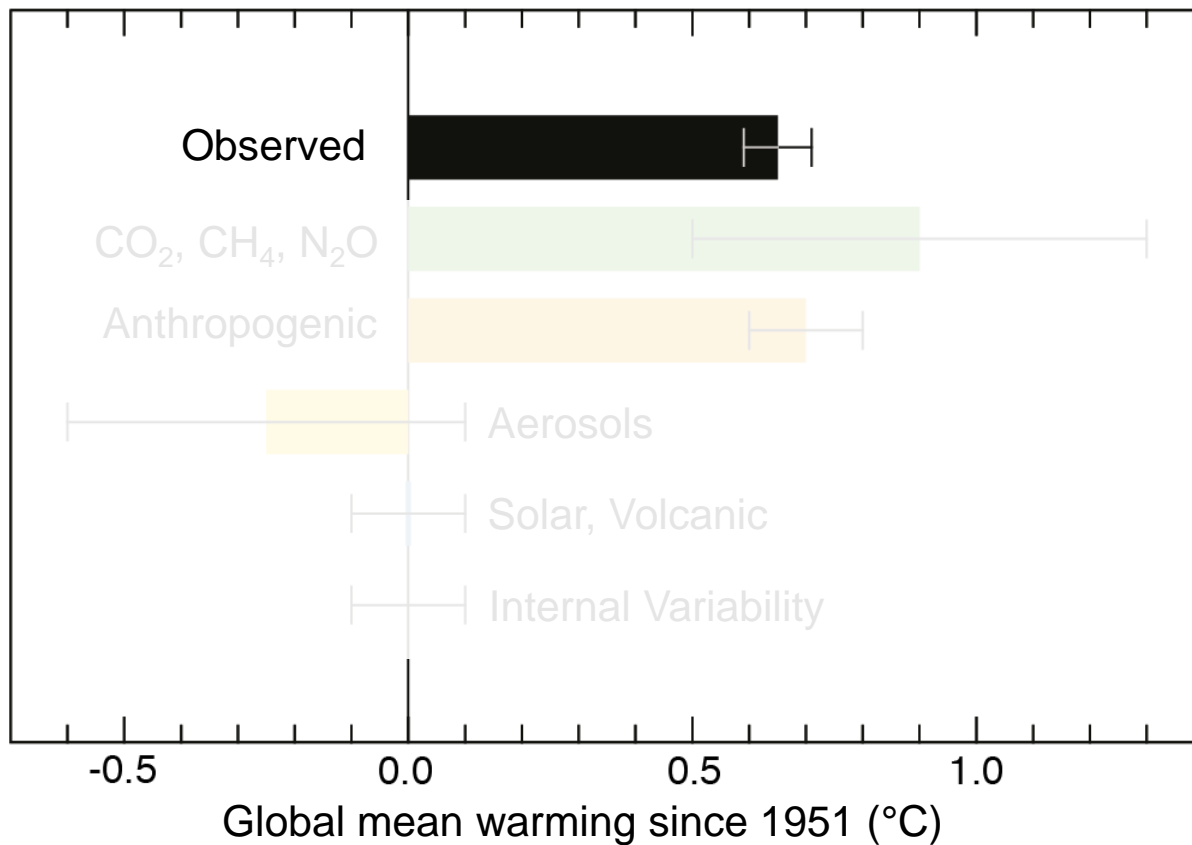


Fig. SPM.5

© IPCC 2013

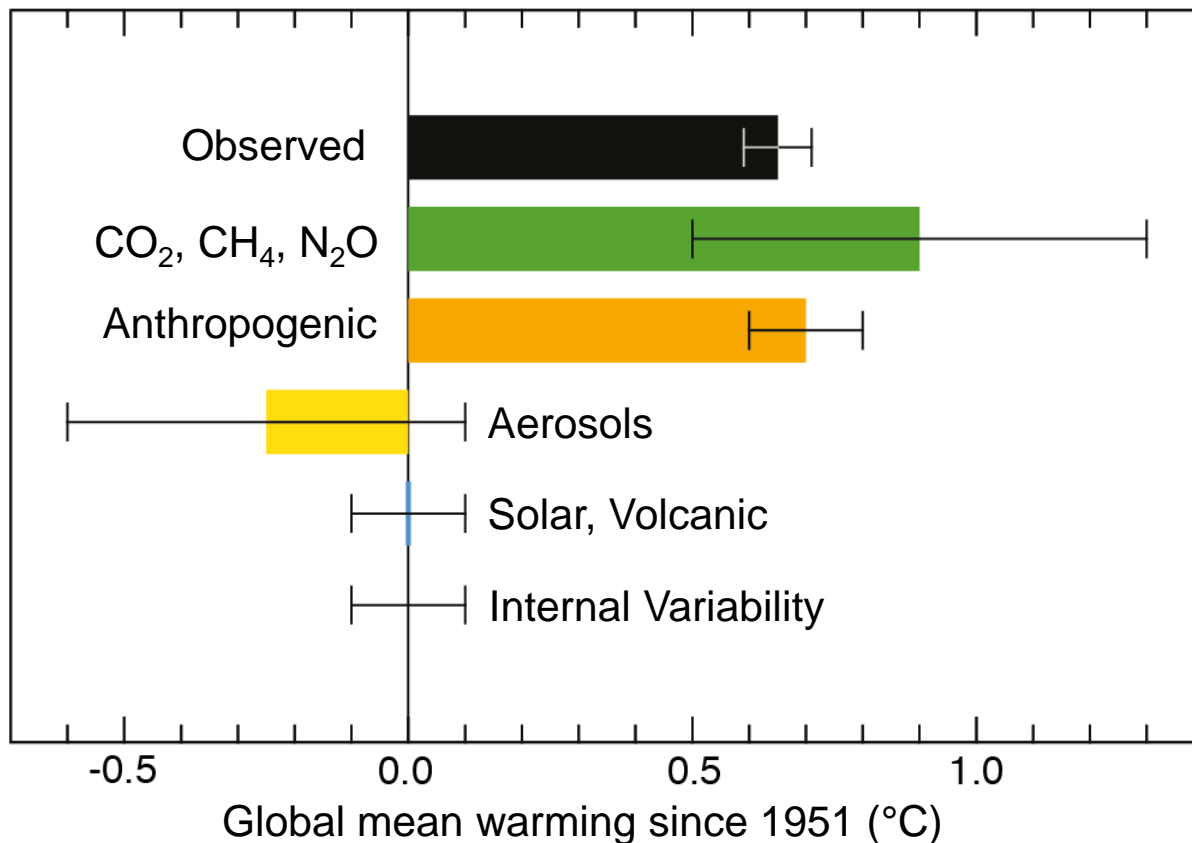


© IPCC 2013

Fig. TS.10

The observed warming 1951–2010 is approximately 0.6°C to 0.7°C.





© IPCC 2013

Fig. TS.10

It is *extremely likely* that human influence has been the dominant cause of the observed warming since the mid-20th century.

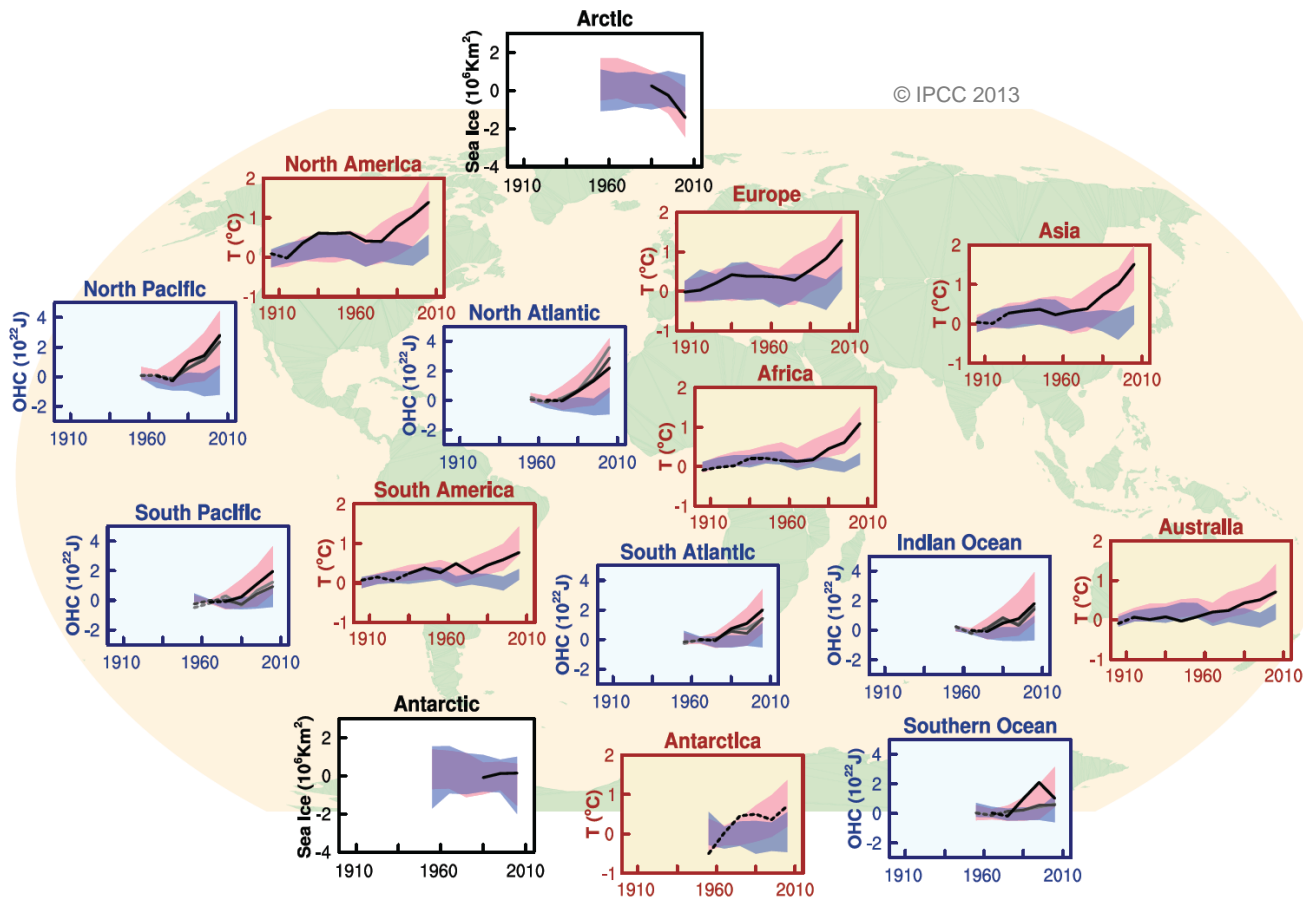


Fig. SPM.6

Human influence on the climate system is clear.



Observation

Ch 2, 3, 4, 5

Understanding

Ch 6, 7, 8, 9, 10

Future

Ch 11, 12, 13, 14

Atlas of Regional Change

ipcc

INTERGOVERNMENTAL PANEL ON climate change

# CLIMATE CHANGE 2013

*The Physical Science Basis*

WG I

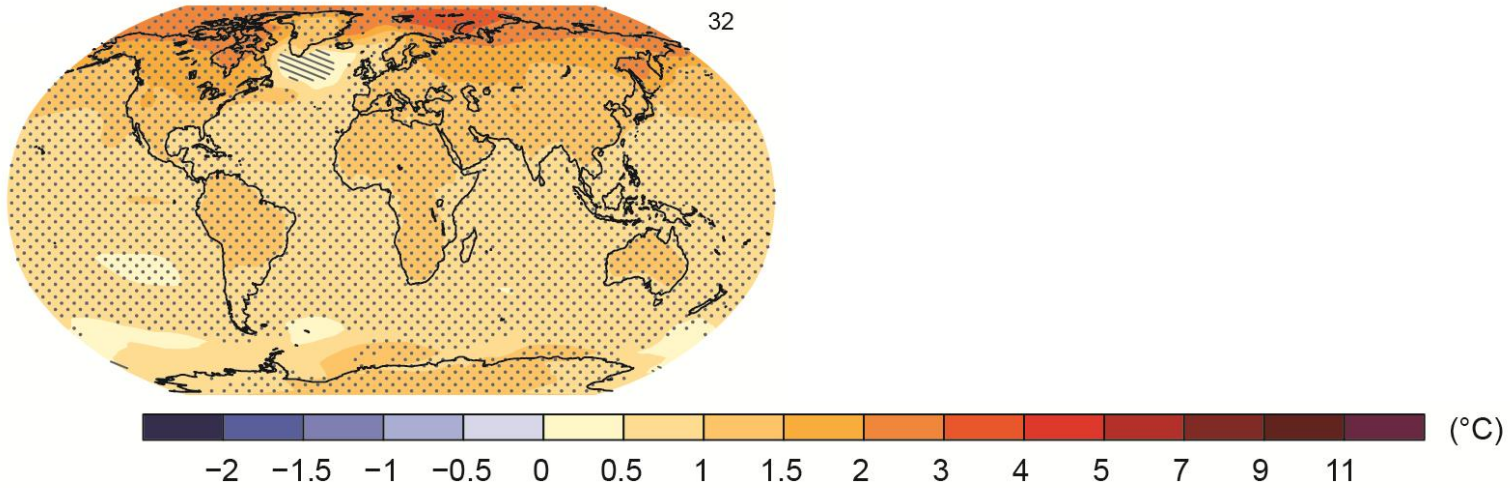
WORKING GROUP I CONTRIBUTION TO THE  
FIFTH ASSESSMENT REPORT OF THE  
INTERGOVERNMENTAL PANEL ON CLIMATE CHANGE



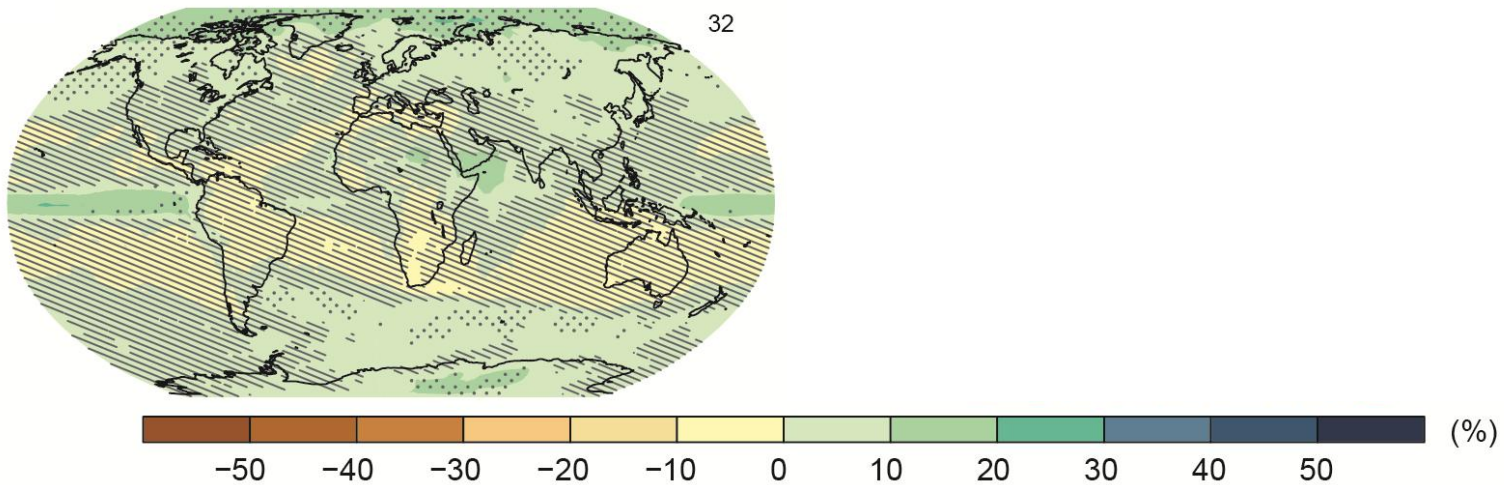
# RCP2.6

CO<sub>2eq</sub> = 475 ppm)

Change in average surface temperature (1986–2005 to 2081–2100)



Change in average precipitation (1986–2005 to 2081–2100)





# Annex I: Atlas of Global and Regional Climate Projections

- ❖ **35 regions**
- ❖ **42 global climate models**
- ❖ **2 variables**  
Temperature, Precipitation
- ❖ **4 scenarios**  
RCPs 2.6, 4.5, 6.0, 8.5
- ❖ **2 seasons**  
temp: DJF, JJA (for temp)  
precip: AMJJAS, ONDJFM
- ❖ **Maps for 3 time horizons**  
2016-35, 2046-65, 2081-2100  
reference period 1986-2005

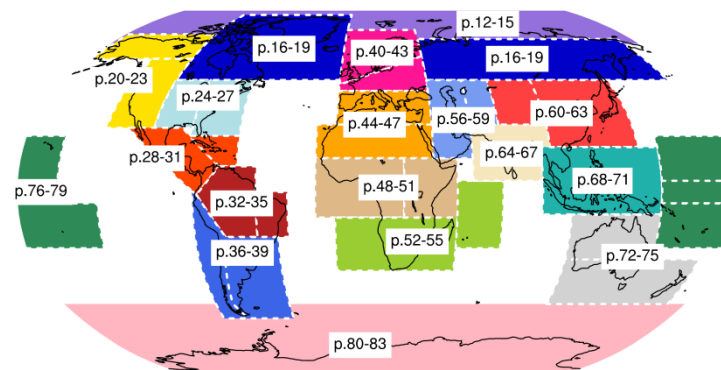
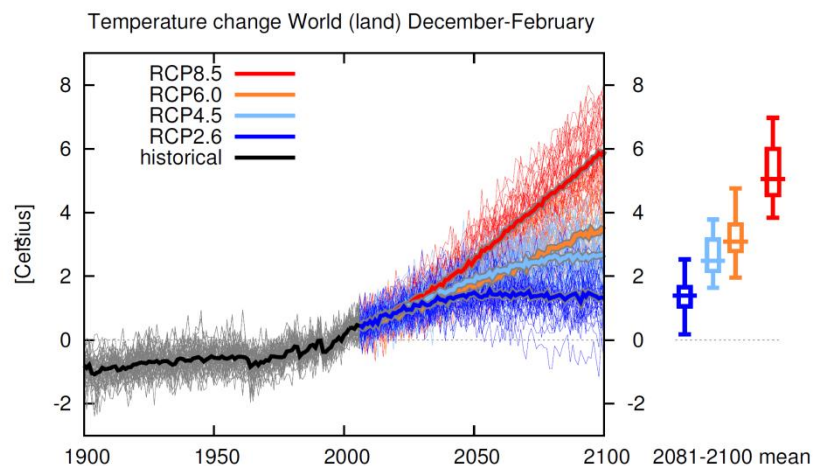


Fig. AI.3



Temperature change RCP4.5 in 2016-2035: December-February

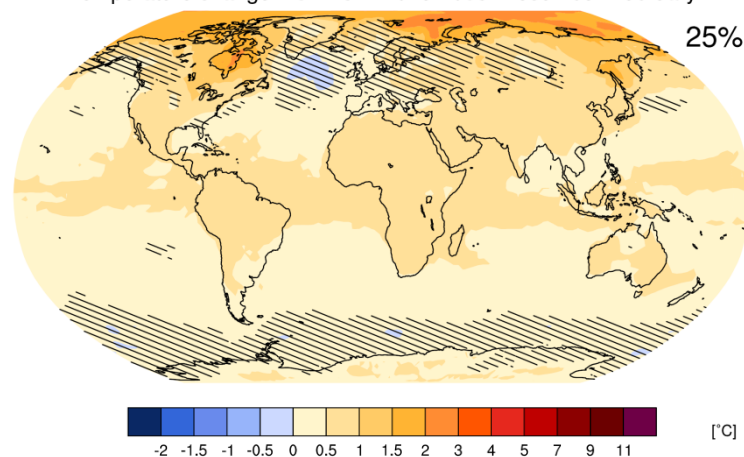


Fig. AI.4

# Climate Change 2013: The Physical Science Basis

Working Group I contribution to the IPCC Fifth Assessment Report

Further Information  
[www.climatechange2013.org](http://www.climatechange2013.org)

© Yann Arthus-Bertrand / Altitude