

Asia-Pacific Network for Global Change Research

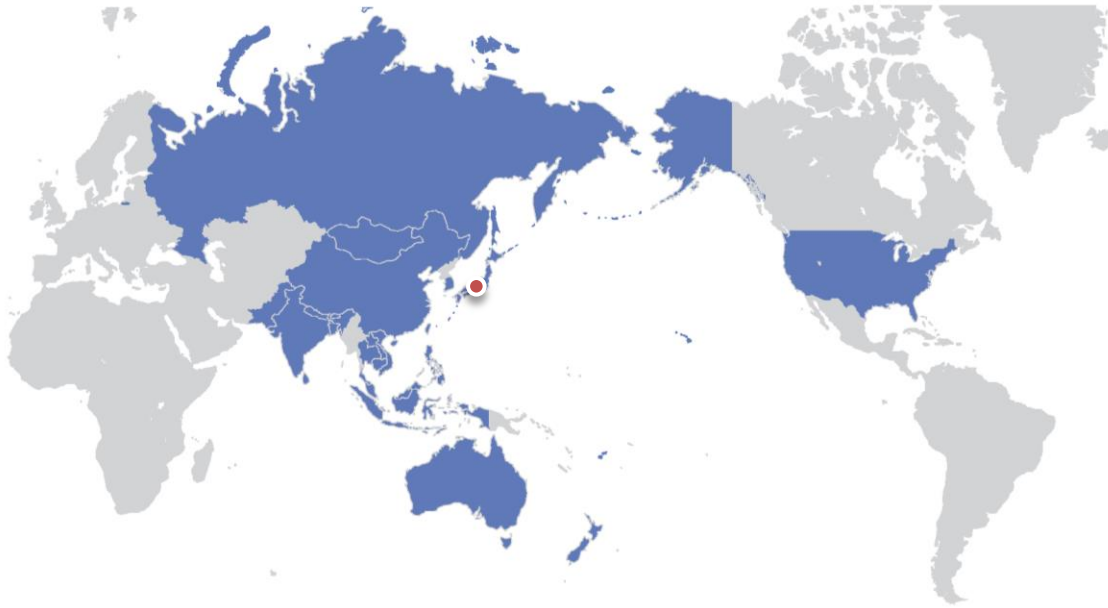
"Research & Capacity Building:
Climate Adaptation and Slow Onset Events"

Dr. Andrew Matthews
APN Steering Committee



Bridging Science & Policy
for a Sustainable Asia-Pacific

- An inter-governmental network of 22 countries in the Asia-Pacific to foster global change research in the region



** Pacific Island Countries, Singapore, Myanmar and Maldives are approved countries whose scientists are eligible to receive funding under APN awards.*

- Established **1996**
- Secretariat in **Kobe**, Japan since 1999
- Financial contribution from four donor countries:
Japan, USA, Republic of Korea, New Zealand
- New co-finance partnership with membership countries:
Cambodia (2014-2019)

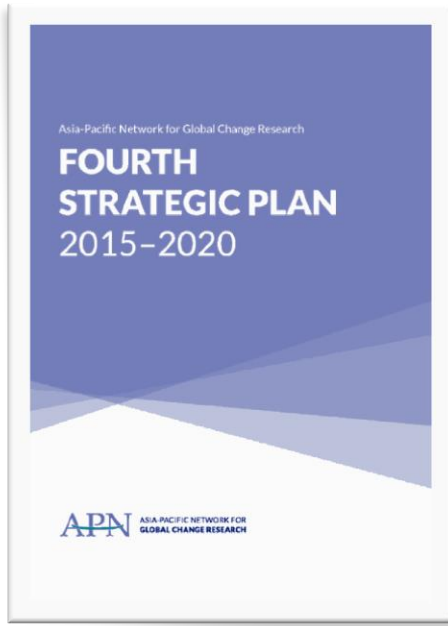


APN Goals

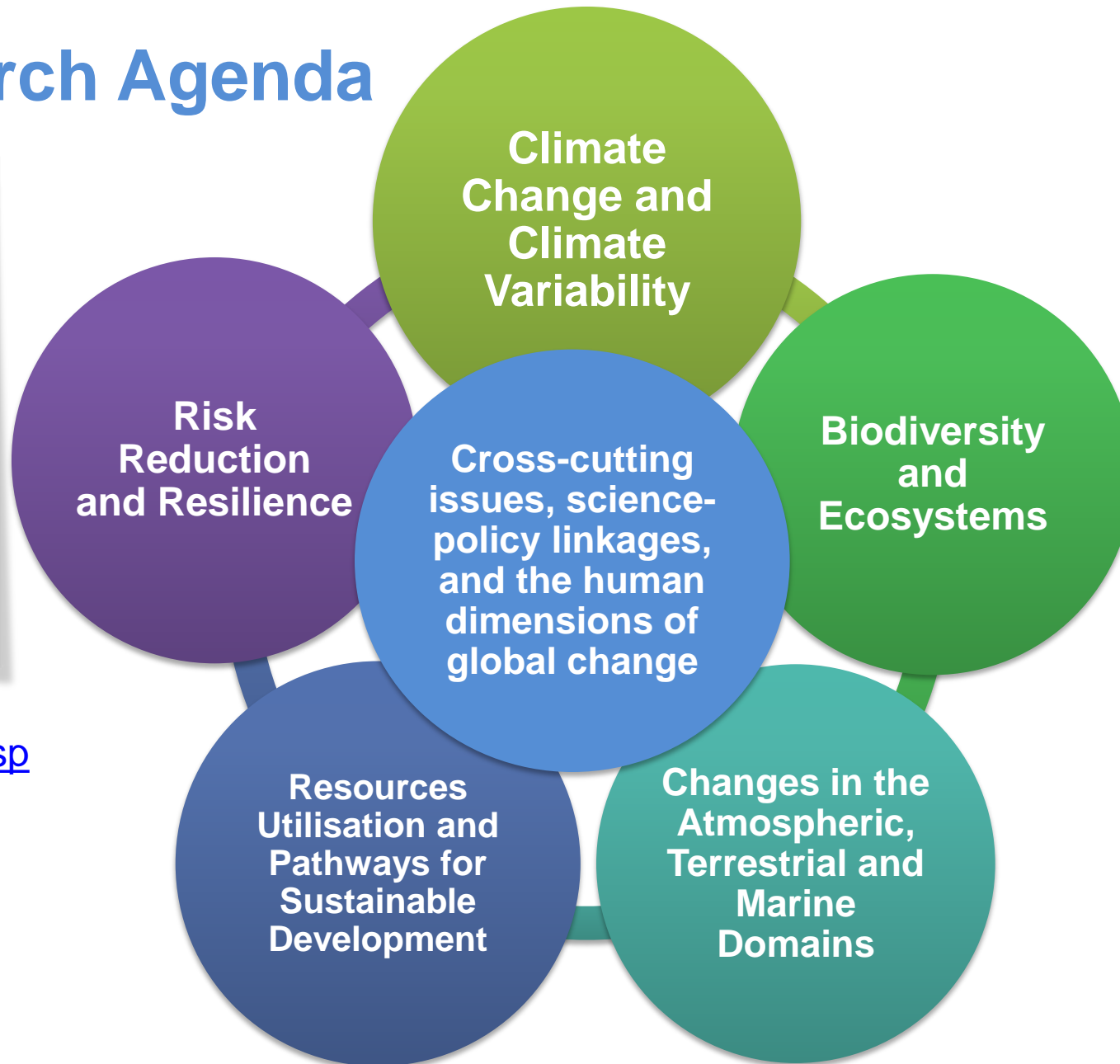
- Supporting **regional cooperation** in global change research
- Strengthening appropriate **interactions among scientists and policymakers,**
- Improving the **scientific and technical capabilities** of nations in the region
- Cooperating with **global change networks and organisations** in the community



4SP Research Agenda



<http://apn-gcr.org/r/4sp>



20-year milestone

422 projects



1999-2004 First Strategic Plan

2010-2015 Third Strategic Plan

Projects
422

2005-2010 Second Strategic Plan

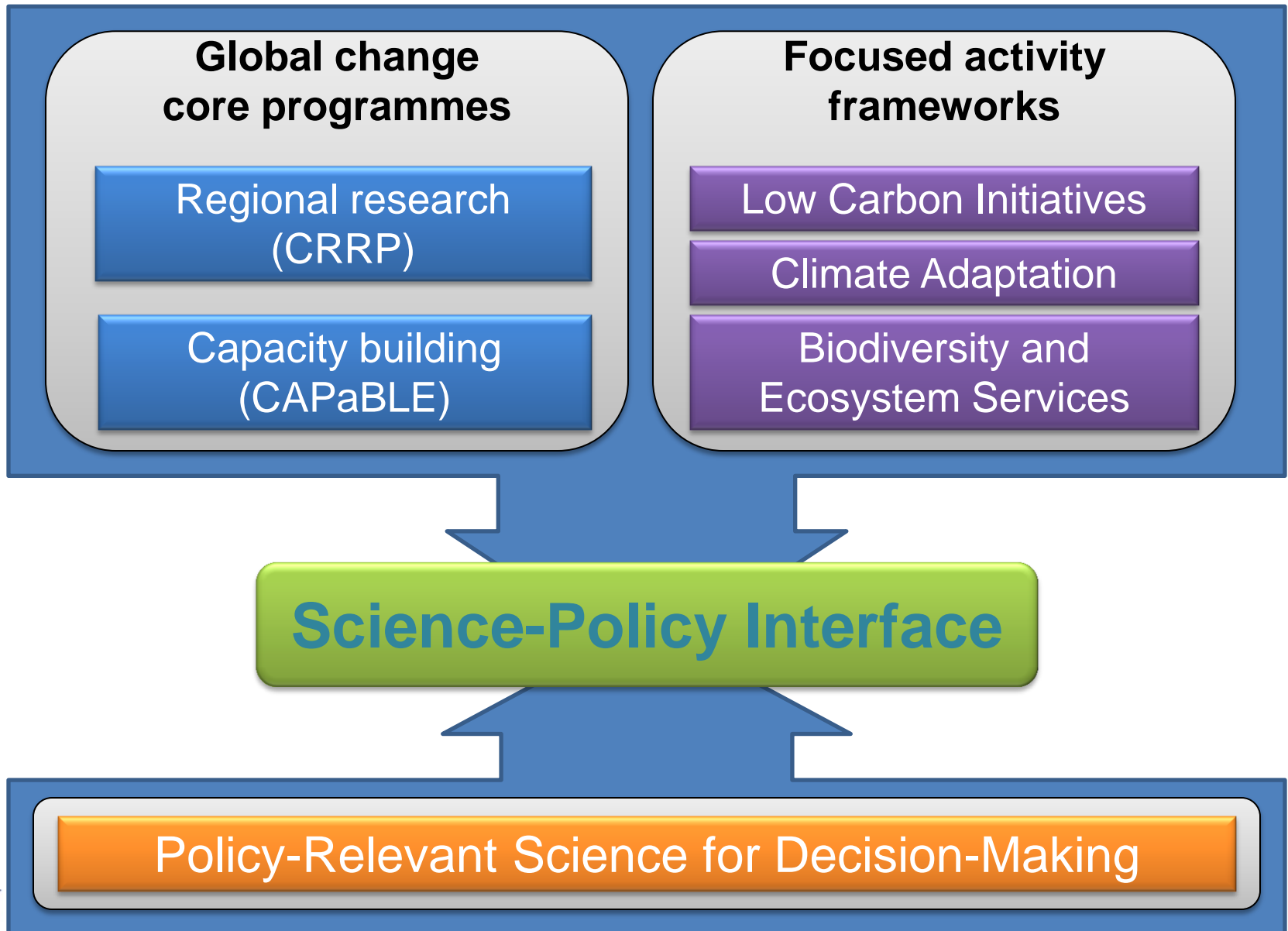
2015-2020 Fourth Strategic Plan

APN Funded Projects

Updated: May 2016

Projects
127
adaptation

Key Activities



2 key highlighted projects in our current work programme

VULNERABILITY OF HOMEGARDEN SYSTEMS TO CLIMATE CHANGE AND ITS IMPACTS ON FOOD SECURITY IN SOUTH ASIA

More information: <http://www.apn-gcr.org/resources/items/show/1585>

Countries engaged: Bangladesh, India, Sri Lanka



Activities

- Research and analysis of 5 study sites in 3 countries
- Development of scenarios for climate change impacts
- Workshop to discuss final results and drafting of Policy Recommendations
- Dissemination Seminars, Debates, quizzes, at local and national levels in 3 countries

Outputs

- 6 peer-reviewed papers, book chapter and 6 conference papers
- detailed analysis on adaptation practices and level of resilience of homegardens to climate change impacts
- generated information for raising awareness and interest of stakeholders in 3 countries on the impacts of climate change on household food security

Impacts

- raised awareness of homegarden vulnerability and filled gaps in the understanding of resilience of homegardens & their contribution to food and nutrition security in households
- project scientists were called upon to serve in many national level committees that deal with food security and climate change issues
- received new funds and developed partnerships to sustain the project activities

IMPACT OF CLIMATE CHANGE ON FOOD SECURITY AND BIOSECURITY OF CROP PRODUCTION SYSTEMS IN SMALL PACIFIC NATIONS

More information: <http://www.apn-gcr.org/resources/items/show/1571>

Australia, Kiribati, Tonga, Tuvalu, Vanuatu



Activities

- Conducted surveys in 4 PICs to identify critical impacts of climate change on food- and bio-security in agricultural systems, analysed data and identified risks
- Held workshop with invited experts from governments and FAO, SPC, ACIAR etc
- Documented outcomes in country reports for policy and strategy development and future investors

Outputs/Results

- Food security is impacted due to slow-onset and extreme events in all countries studied.
- There is a lack of individual and institutional capacity to deal with food security and biosecurity
- Future strategies to form regional networks and engage wide level of stakeholders, including communities, governments and investors

Impacts

- Countries recognised the value of developing regional networks between neighbouring and like countries as a feasible, low cost and sustainable way of acquiring assistance to deal with the impacts of climate change
- Countries demonstrated that they are ill equipped and lack scientific networks for seeking information and advice to ensure rapid response to incursions.

Projects under our Climate Change Adaptation & Disaster Risk Reduction Framework

Enhancing Capacity of policymakers and practitioners in India, Sri Lanka and Nepal on Loss and Damage related to slow onset events in the region

India, Sri Lanka, Nepal

Capacity building to diagnose the extent to which the problem of slow onset events persists and what approaches can be developed linking with the existing work in relation to DRR, CCA and development policies and practices.

South Asia is vulnerable to slow onset events: The region, of which population and economy are highly dependent on natural resources and climate sensitive sectors, is already witnessing the loss of livelihood, reduction in agricultural productivity, negative health impacts and displacement

- 1. mobilising scientists, policymakers and practitioners to comprehensively assess the impact of slow onset events and prepare a comprehensive response.**
- 2. spreading awareness about loss and damage caused by slow onset events to people and ecosystems.**
- 3. Sensitising, engaging and building capacity of stakeholders, particularly policymakers and practitioners to develop appropriate solutions.**

Projects under Climate Adaptation Framework CAF

- Developing Climate Inclusive Potential Loss and Damage Assessment Methodology for Flood Hazards
- Developing and promoting a people-centred approach to assess and address impacts of climate change induced loss and damage
- Integrating CCA, DRR and L+D to address emerging challenges due to **slow onset processes**
- An analysis of longer-term (5-10 years) recovery following major disasters in the Asia Pacific Region: Lessons for resilient development
- Assessing the linkages between climate change adaptation, disaster risk reduction , and Loss and Damage: Case studies in the floodplains of Cambodia, Indonesia, Philippines, Thailand and Vietnam
- Integrated flood modelling and Pre-Disaster Loss Estimation in Asian countries
- **Methods toolbox for assessing loss and damage at local level**

Projects under CAF (cont.)

- Addressing noneconomic losses and damages associated with climate change: Learning from the recent past extreme climatic events for future planning
- Climate change risk assessment and adaptation for loss and damage of urban transportation infrastructure (UTI) in Southeast Asia (SEA)
- Enhancing Capacity of policymakers and practitioners in India, Sri Lanka and Nepal on Loss and Damage related to slow onset events in the region
- Capacity Building for National, Provincial Stakeholders and Local Communities on Loss and Damage related to DRR and CCA
- Building capacity for reducing loss and damage resulting from slow and rapid onset climatic extremes through risk reduction and proactive adaptation within the broader context of sustainable development
- Can traditional livelihoods and mining co-exist in a changing climate: strengthening public-private partnerships in Mongolia to reduce risk and address Loss and Damage
- Capacity Building for Resilience Planning in Fiji: Bridging the science-policy-practice interface in CCA, DRR and L&D

For more information...



APN Website:

News, announcements and global change community updates

<http://www.apn-gcr.org/>



Contact us:

East Building, 4F

1-5-2 Wakinohama Kaigan Dori

Chuo-ku, Kobe 651-0073, Japan

Tel: +81-78-230-8017

Fax: +81-78-230-8018

info@apn-gcr.org