

First Biennial Update Report of Brazil

Facilitative Sharing of Views

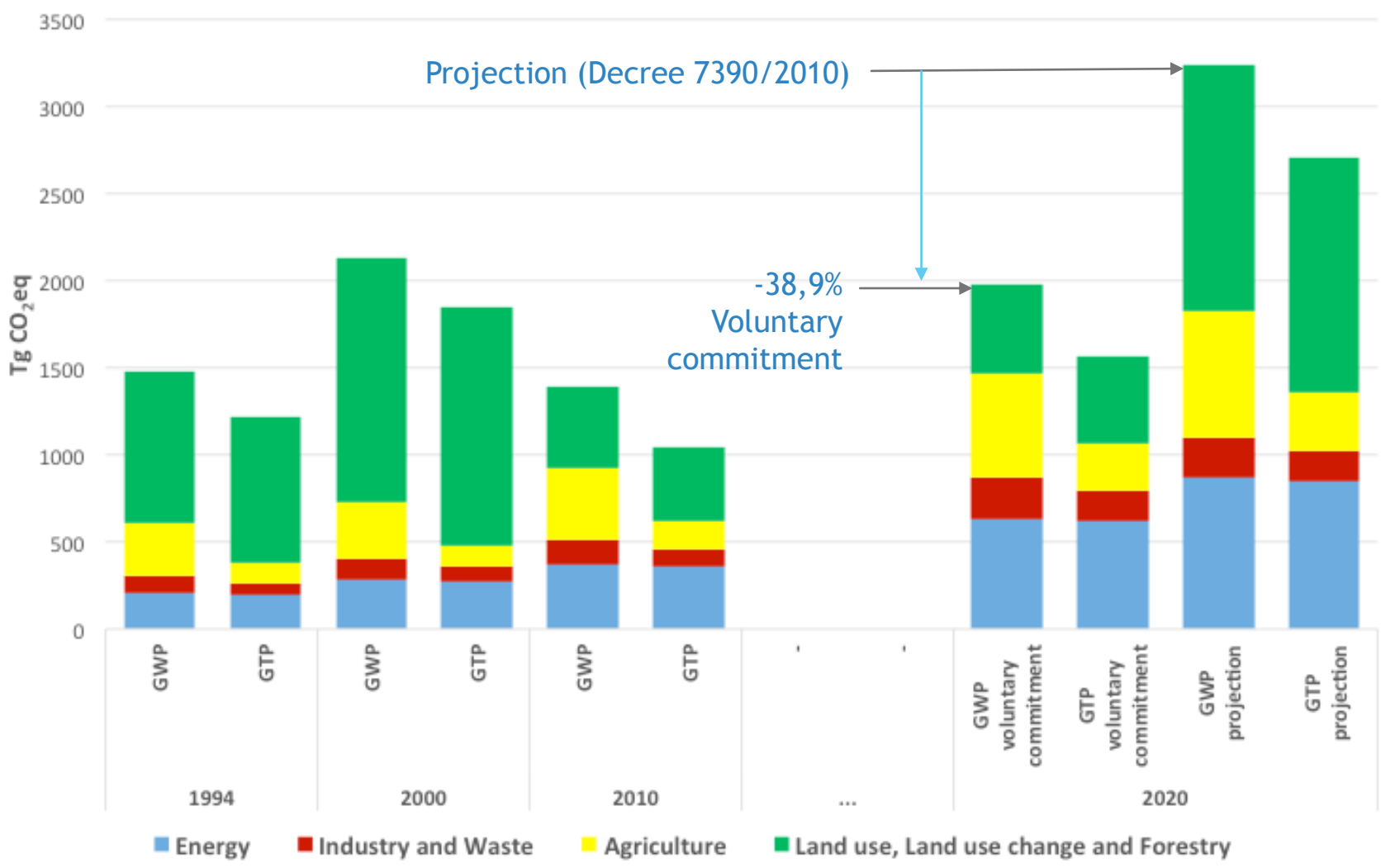
Bonn, 20 May 2016

Brazil's National Policy on Climate Change

- ▶ PPCDAm
- ▶ PPCerrado
- ▶ ABC Plan
- ▶ Hydroelectric Plants
- ▶ Alternative Energy Sources
- ▶ Biofuels
- ▶ Energy Efficiency
- ▶ Sustainable Charcoal

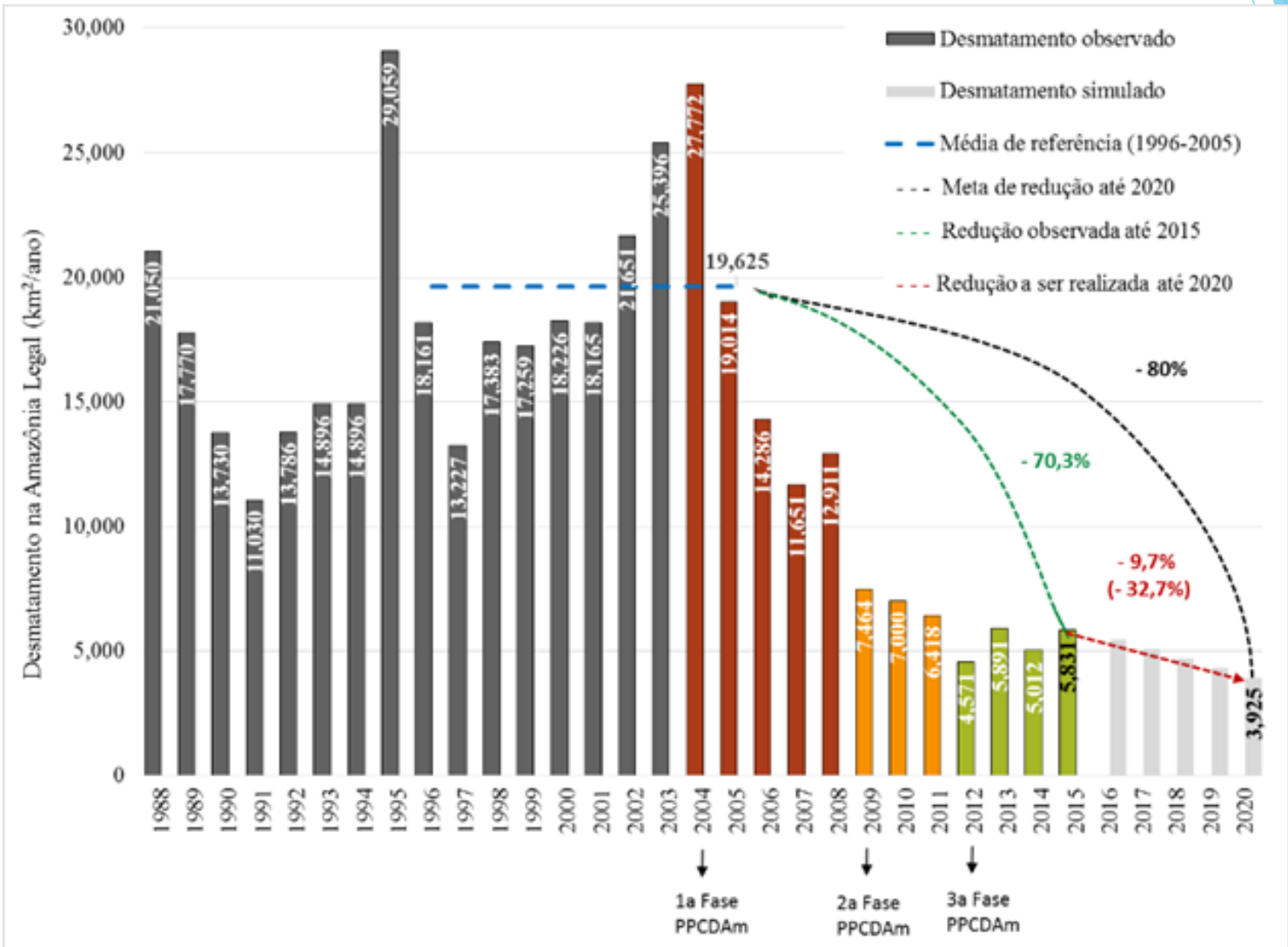
Expected reduction of
36.1% to 38.9%
below the projected
emissions in 2020

National Inventory of Anthropogenic Emissions and Removals



Mitigation Actions and their Effects

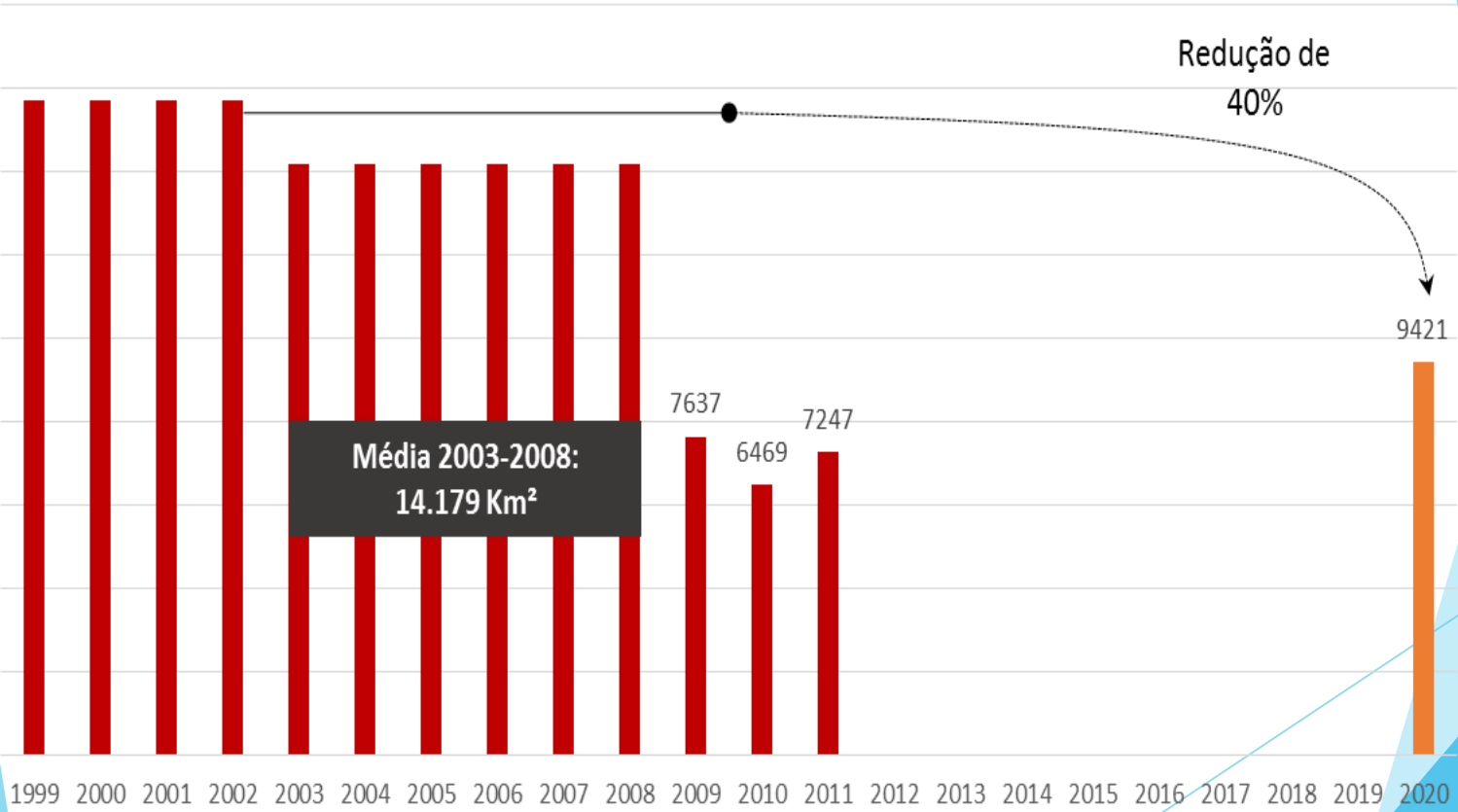
PPCDAm



Mitigation Actions and their Effects

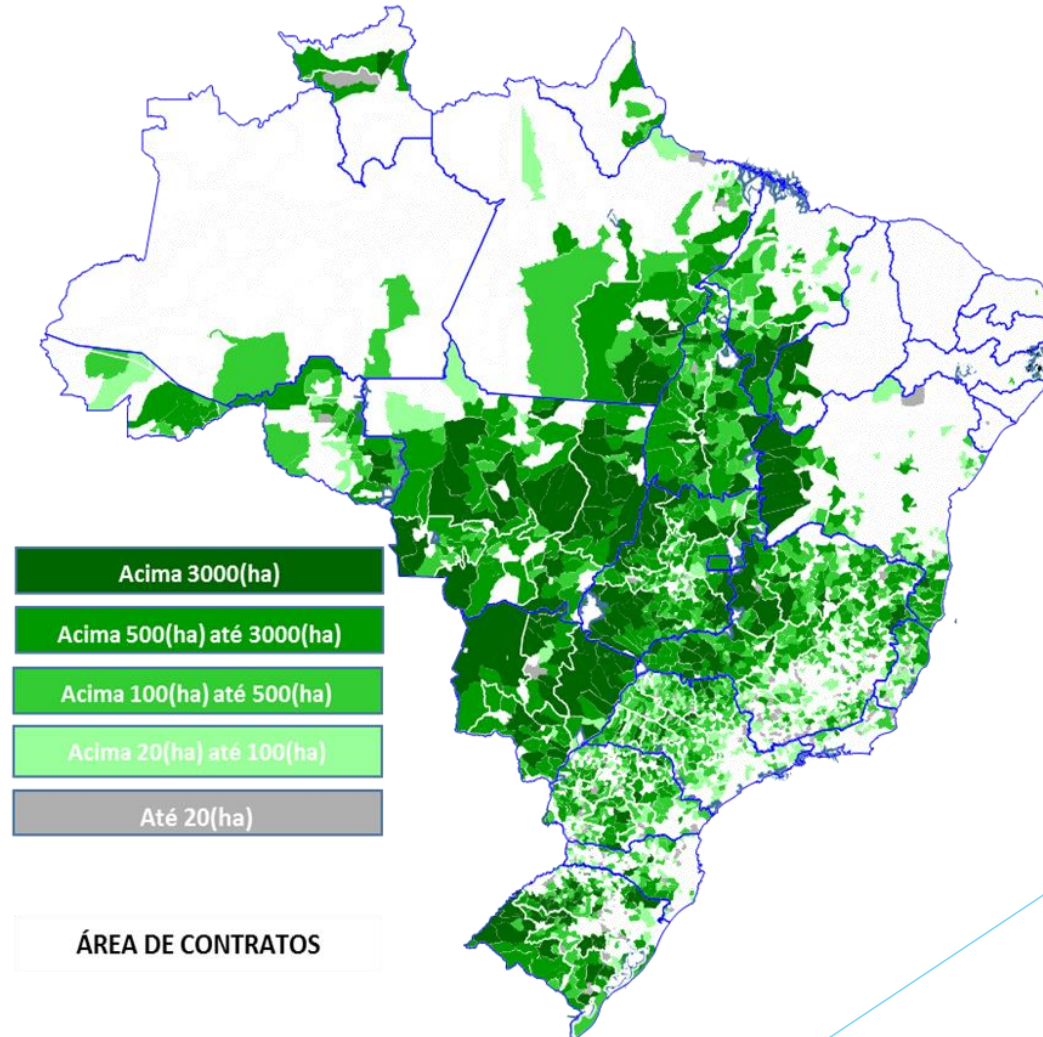
PPCerrado

Desmatamento Monitorado pelo PMDBBS no Cerrado (km²) tendo em vista a meta de redução do desmatamento em 40% até 2020



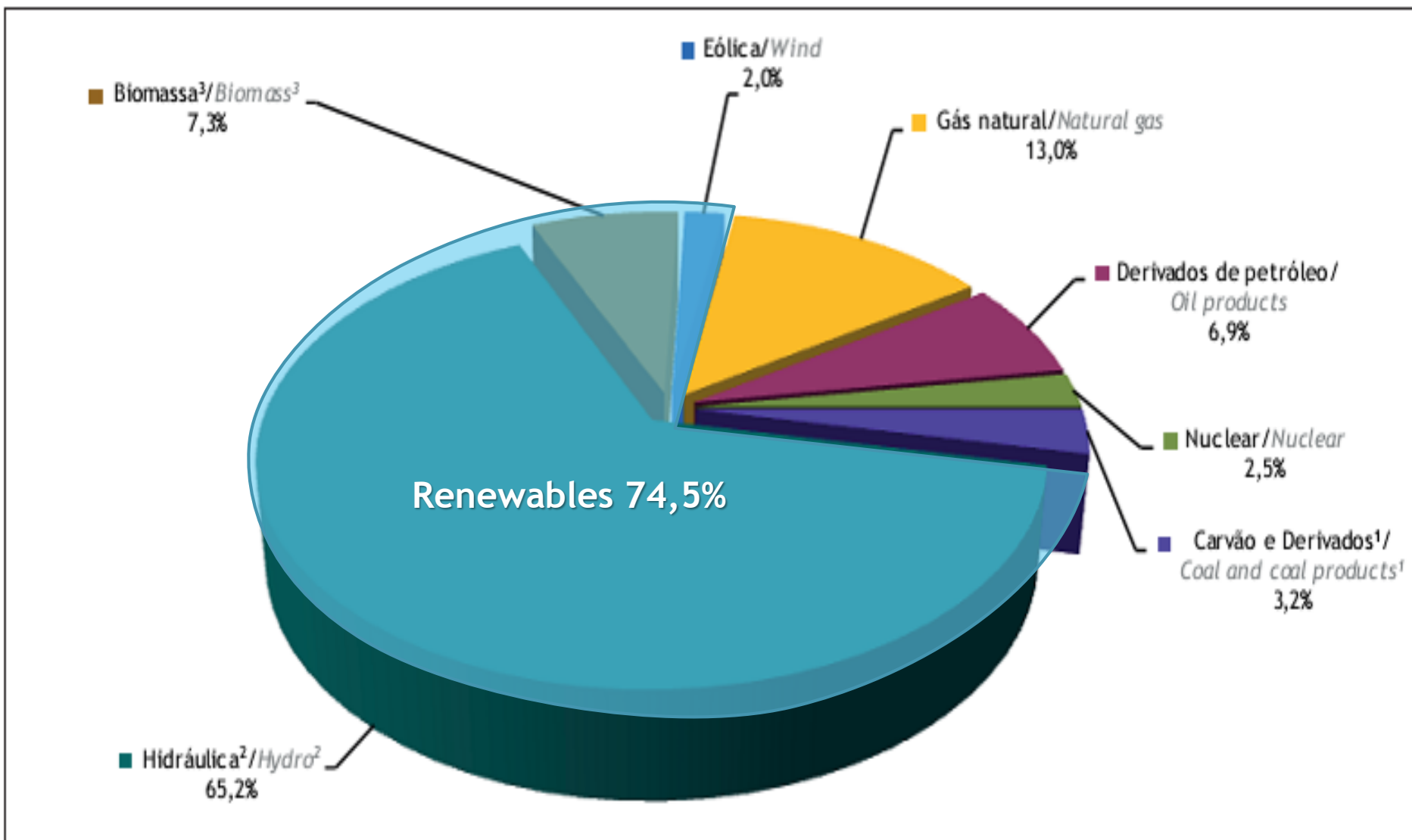
ABC Plan

Análise 1: Todos contratos - Período: JAN/2013 a DEZ/2014



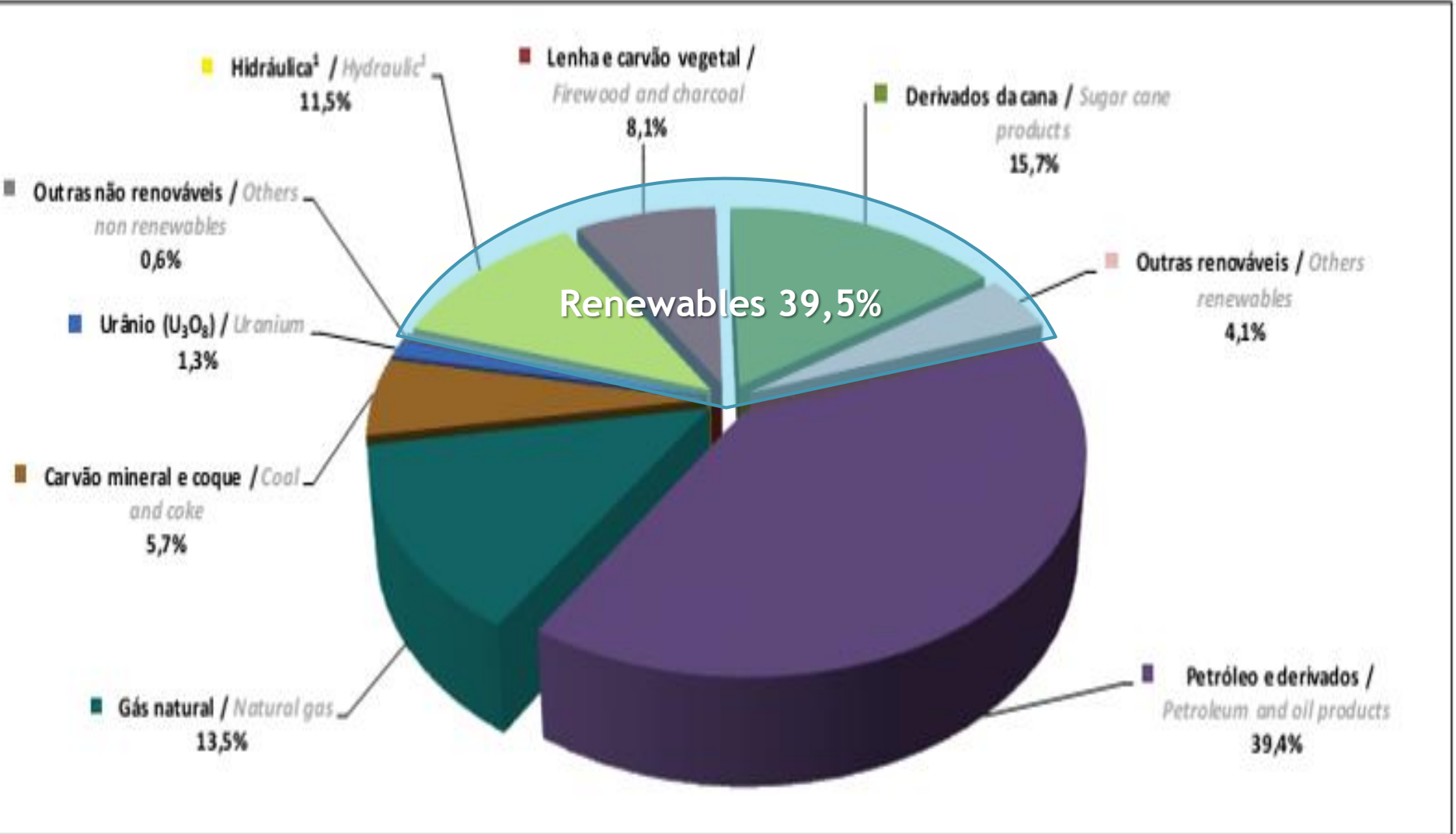
Mitigation Actions and their Effects

Domestic Electricity Supply by Source



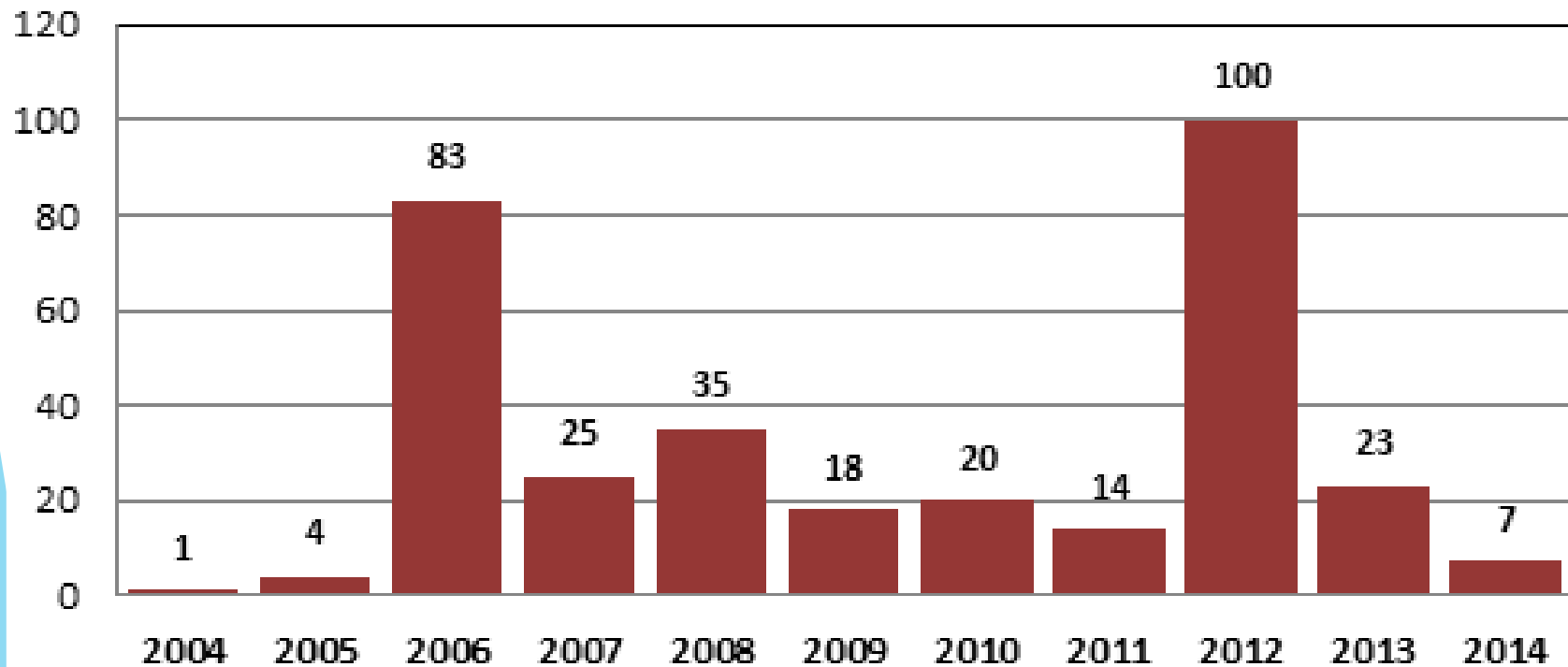
Mitigation Actions and their Effects

Domestic Energy Supply



CDM Projects in Brazil

- ▶ Registered Brazilian project activities in the CDM Executive Board until November 30, 2014



Constraints and Gaps, and Related Financial, Technical and Capacity Needs; Information on Support Received

Information on the Support Received

▶ 1996 - 2014

Financial support received in the context of Climate Change	
Source	TOTAL (USD)
Inter-American Development Bank (IDB)	2 020 000.00
Global Environment Facility (GEF)	83 941 773.36
International Bank for Reconstruction and Development (IBRD)	10 000 000.00
Other Multilateral Channels	38 358 000.00
Bilateral (Norway)	758 589 348.12
Bilateral (Federal Republic of Germany)	39 573 207.40
Bilateral technical cooperation	16 819 257.31

Constraints and Gaps, and Related Financial, Technical and Capacity Needs; Information on Support Received

Priority Areas for Future International Cooperation (non-exhaustive list)

- ▶ **Technology**
- ▶ **Cities**
- ▶ **Agriculture**
- ▶ **Forests**

SMMARE System

- ▶ MRV of mitigation actions in Brazil
- ▶ Pre-2020 voluntary commitments
- ▶ IPCC methodologies
- ▶ Modular system
- ▶ Aggregated GHG emissions estimates by sector

Thank You

National Focal Point

**Ministry of Foreign Affairs
Division of Climate and Ozone
dclima@itamaraty.gov.br**