

# TACKLING METHODOLOGICAL ISSUES RELATED TO REDD IN INDONESIA

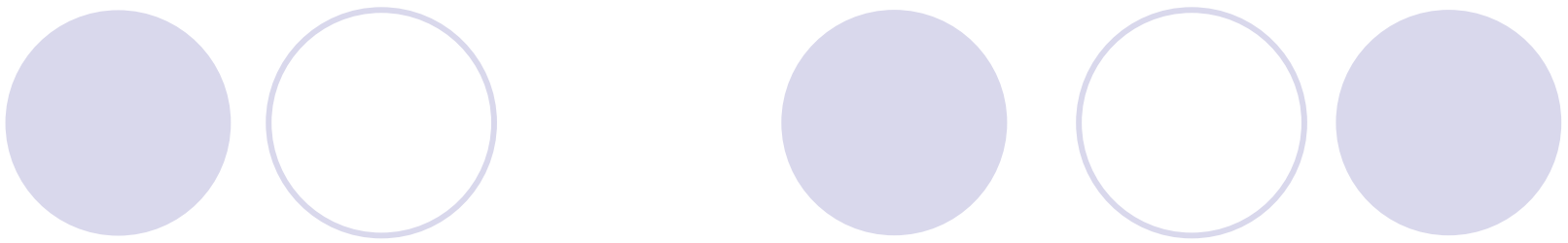
Rufi'ie, Ministry of Forestry  
Antung Deddy, Ministry of Environment

**UNFCCC Workshop on  
Methodological Issues Relating to REDD  
Tokyo, 25 – 27 June 2008**

# INTRODUCTION

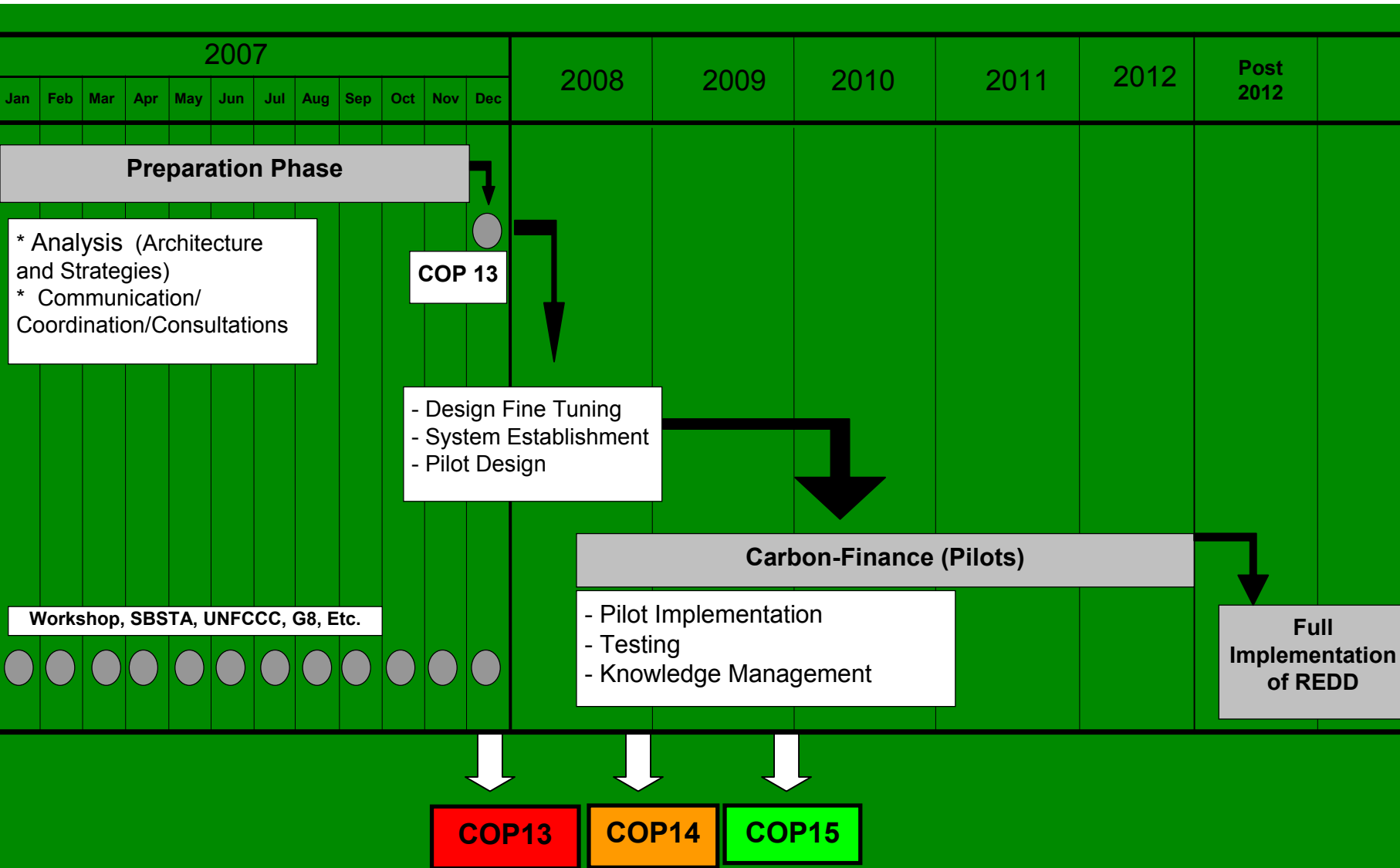


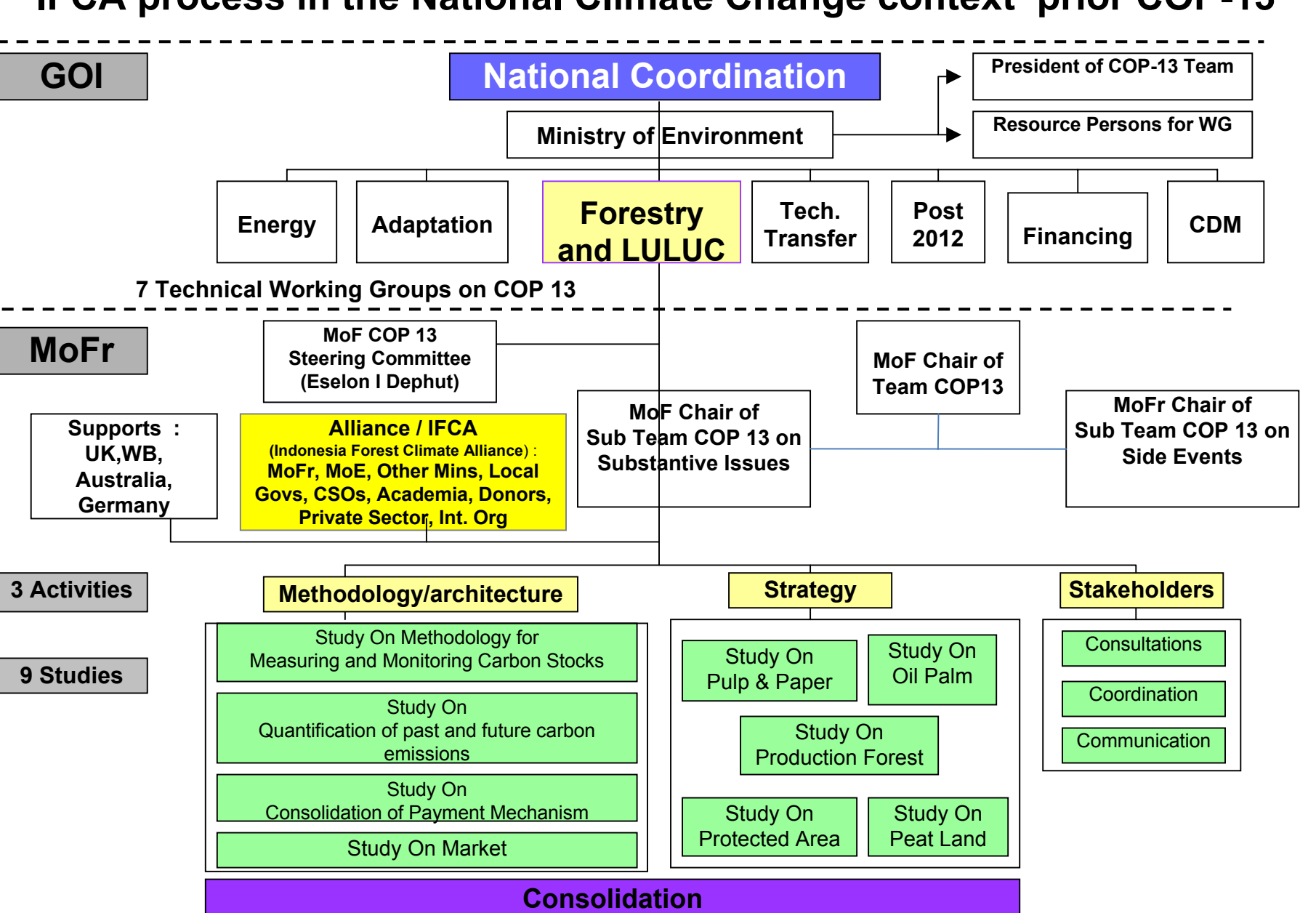
1. In response to international processes related to reducing emissions from deforestation in developing countries, Indonesia (2007) under the umbrella of *Indonesia Forest Climate Alliance (IFCA)* carried out national REDD study and stakeholder consultations to address relevant issues including methodology



- **2. Government Policy related to support REDD**
  - a. Committed to stop illegal logging
  - b. To suspend permit for oil palm plantation on peatland
  - c. National movement on land rehabilitation
  - d. To give incentive for local government who maintain and rehabilitate land and forest cover through Towards Green Indonesia Program →  
By President (since 2007)

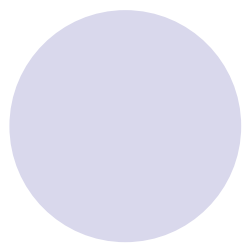
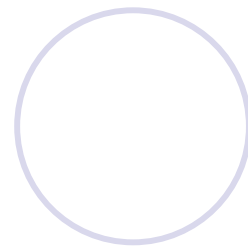
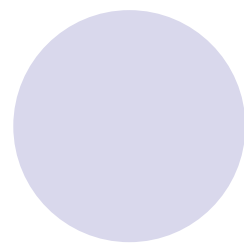
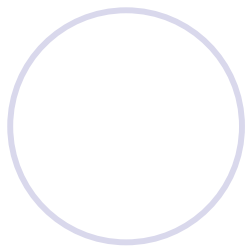
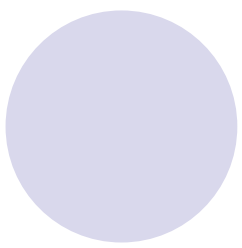
# Indonesia REDD (REDDI) Road Map





# Methodology : Indonesian status

- There are many land use mapping exercises carried out (1985 – 2003) with monitoring under way for 2000-2005. The activities and data in hand are not yet sufficient for REDD reference emission level and future monitoring.
- For carbon stocks : there is a forest plot network but little to no data on carbon stocks.
- For area change : not yet sufficient for REDD reference emission level and future monitoring.



- Indonesia has started systematic mapping by MODIS/TM and SPOT Veg. for assessing change from 2000 to 2005 → these mapping products have been used to assess vegetation and forest cover change, but they require more work for REDD. Since 2005 every year conduct satellite imagery (spot and landsat TM) for land and forest cover
- The technical and human capacity exists for Indonesia to make the needed improvements in the near future.

# CHALLENGES FOR INDONESIA :

## gaps to be filled

- **Data availability : different remote sensed data and tools for different periods, lack of data on historical carbon stocks**
- **Existing monitoring system vs REDD requirement**

# STUDY FOLLOW UP (2008)

- Methodology : in cooperation with Governments of Australia and Japan and South Dakota University
- Demonstration activities : in cooperation with German and Australian governments (in preparation)

# ASSISTANCE NEEDED



- **Capacity building** on data collection, assessment of forest cover changes, carbon accounting, establishment of reference emission level, monitoring of reduced emissions from DD,
- **Access** to appropriate resolution remote sensed data and relevant information,
- **Financial support** for demonstration activities.



**thank you**