

Establishment of Tree Nurseries





Monitoring, Reporting and Verification



GIS @ GBM

- GBM uses GIS and Remote Sensing to support:
 - Planning
 - Implementation
 - Monitoring
 - Reporting of tree planting projects in Kenya

GIS @ GBM

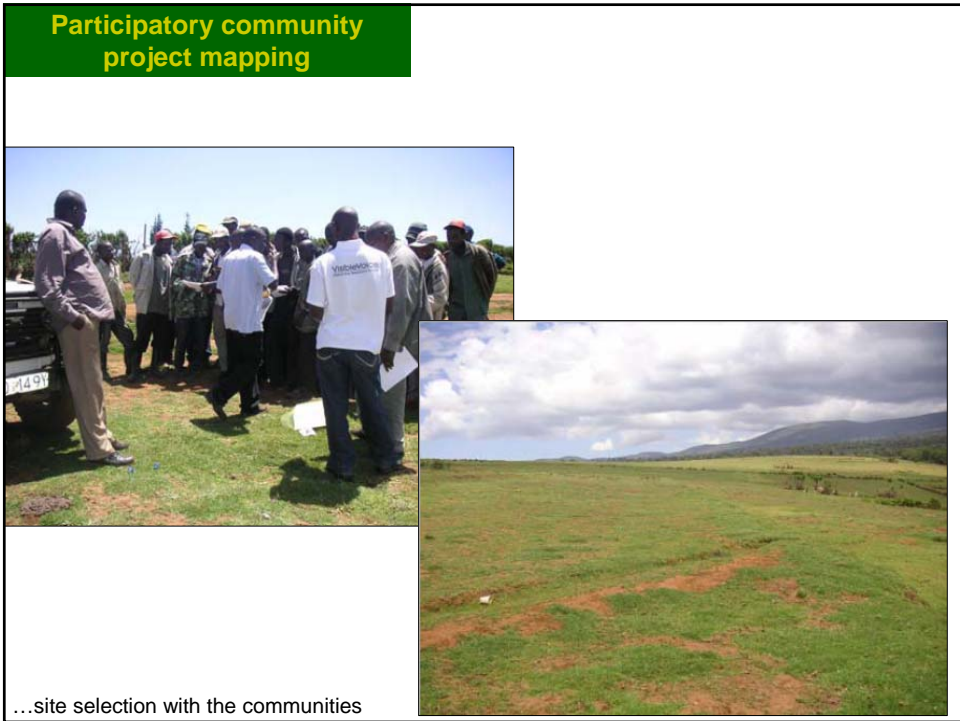
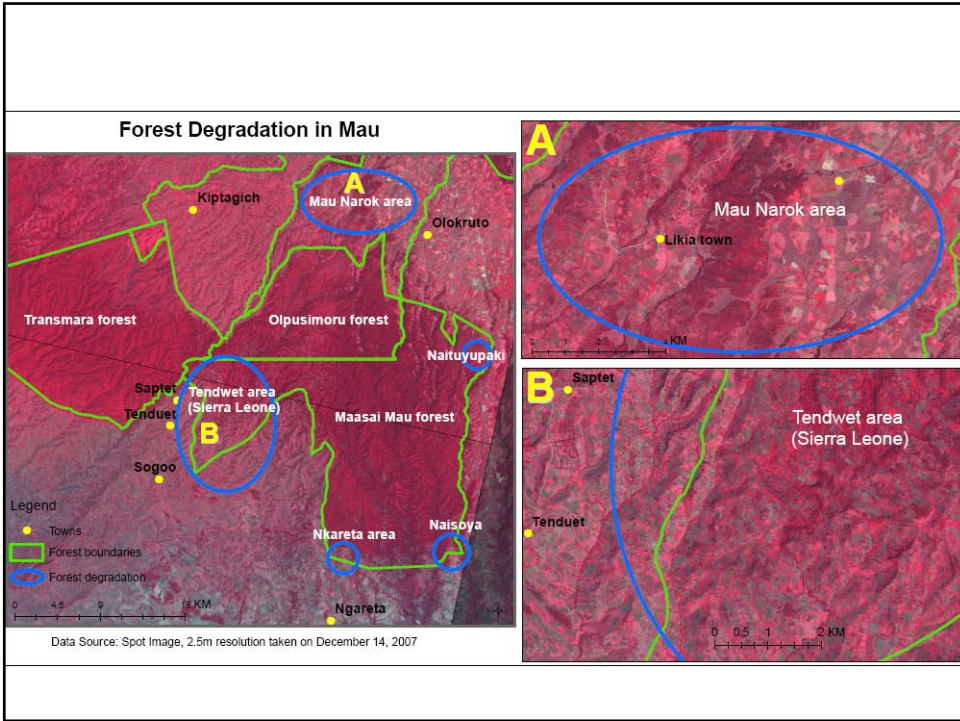
GBM uses:

- Satellite data to **identify areas of forest loss** where urgent reforestation or tree planting should be carried out.
- GIS and Remote Sensing for identification of the **location**, delineate the **extent** of specific potential community-based tree planting project sites.
- Field measurements to **estimate baseline biomass** and carbon stocks for the community tree planting project sites
- Mapping and field based-monitoring using GIS to ensure **high survival** of the planted trees
- Web-based mapping application for **reporting of project progress** to the management and project partners

Planning of landscape-scale community projects



...Identification of critical intervention areas





Home Page - Windows Internet Explorer

the green belt movement

GBM Projects Information System

TNG Details

- TNG Name : TNG 01
- House Holds : 15
- Seedlings : 200
- Network Name : Network 01
- Status : Active

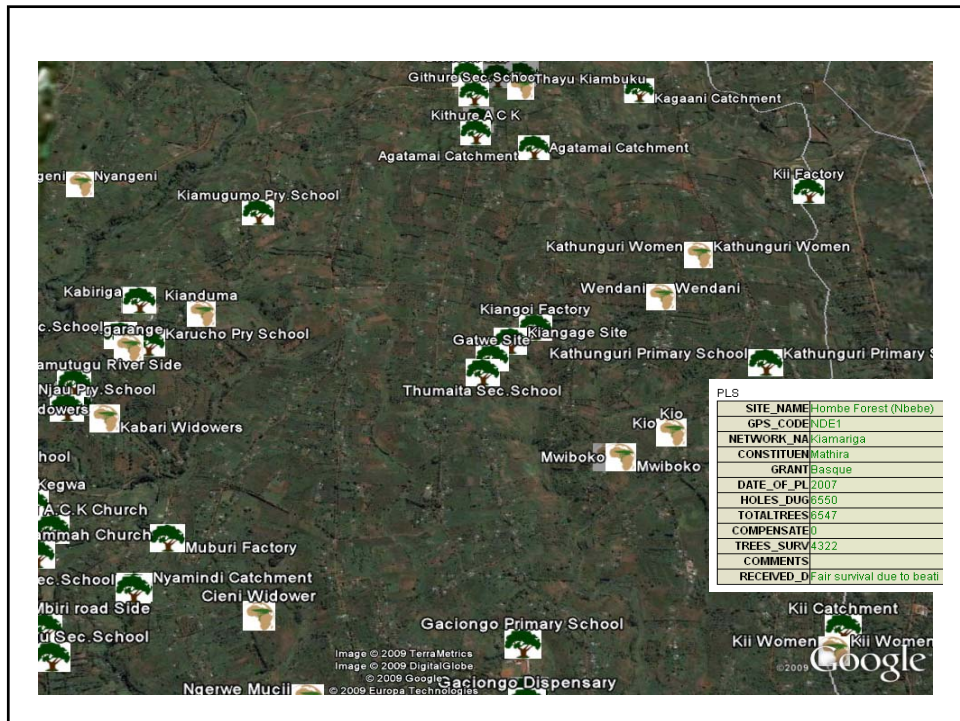
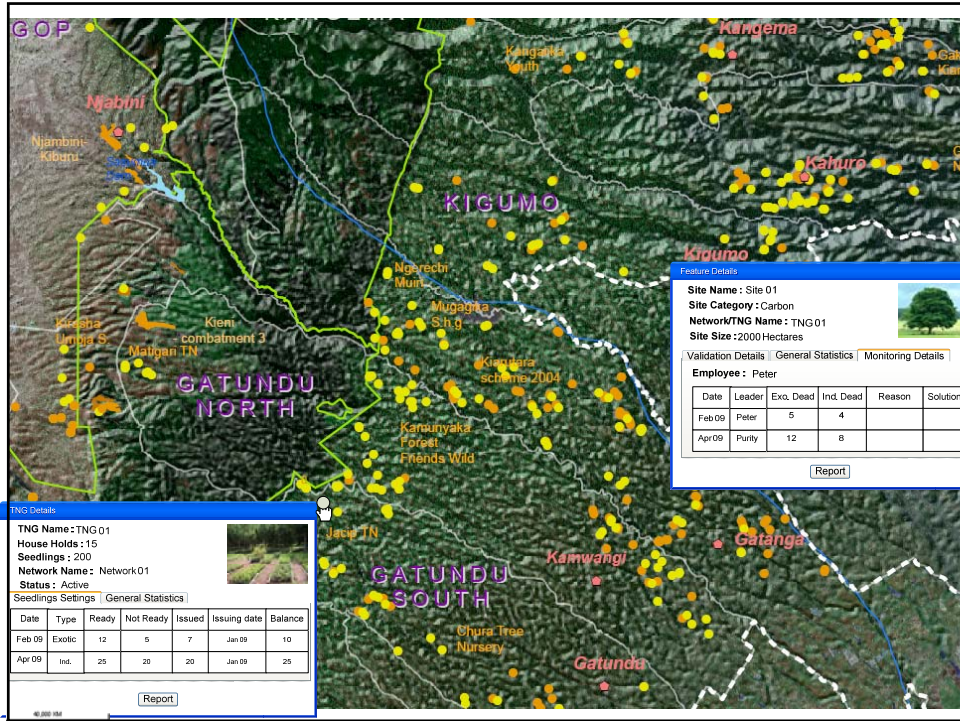
Seedlings Settings | **General Statistics**

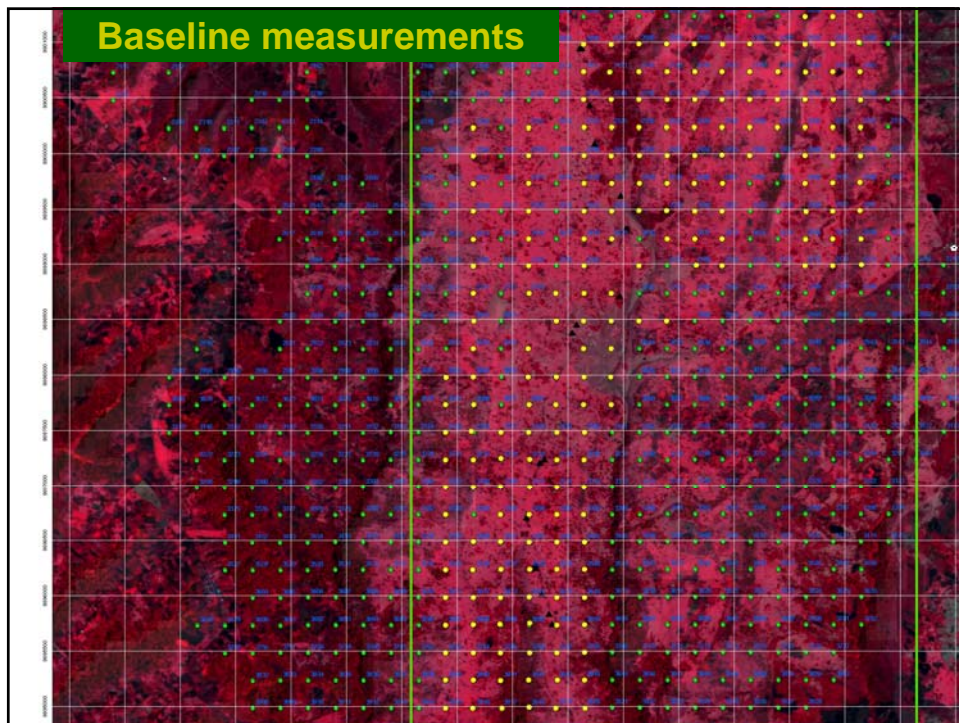
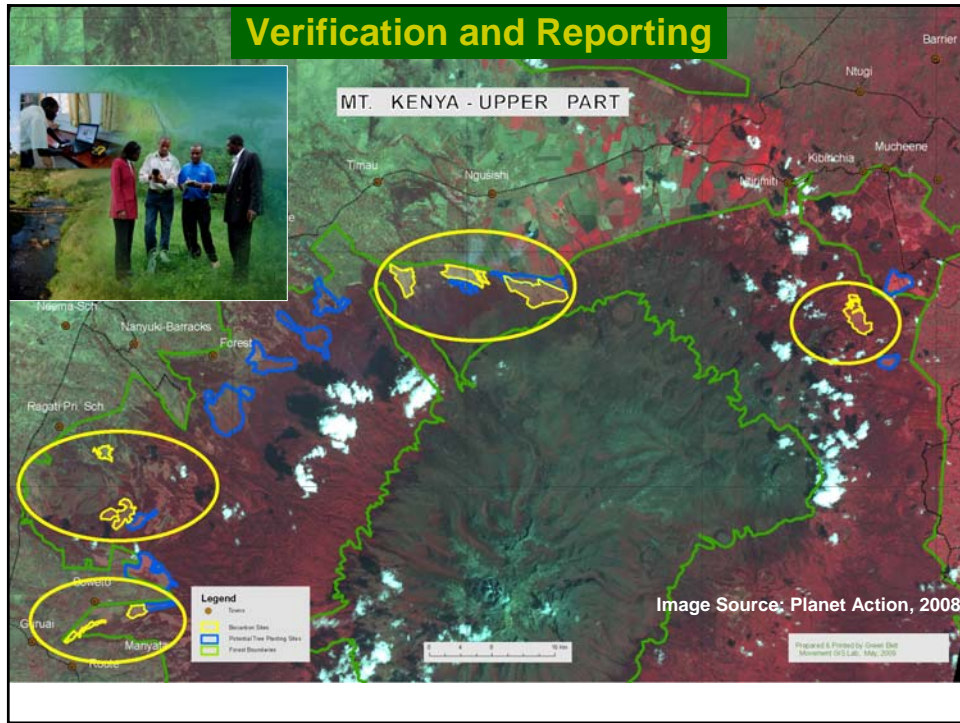
- Number of trees planted : 1000
- Number of trees Validated : 700
- Number of trees compensated : 500

Report

Category	Value
Planted	1000
Validated	700
Comp.	500

06:29 p





Verification and Reporting Project Progress



Partners in GIS Efforts @ GBM

- ESRI
- Google
- Leica Geosystems
- Planet Action
- Richard and Rhoda Goldman Fund
- Trimble

