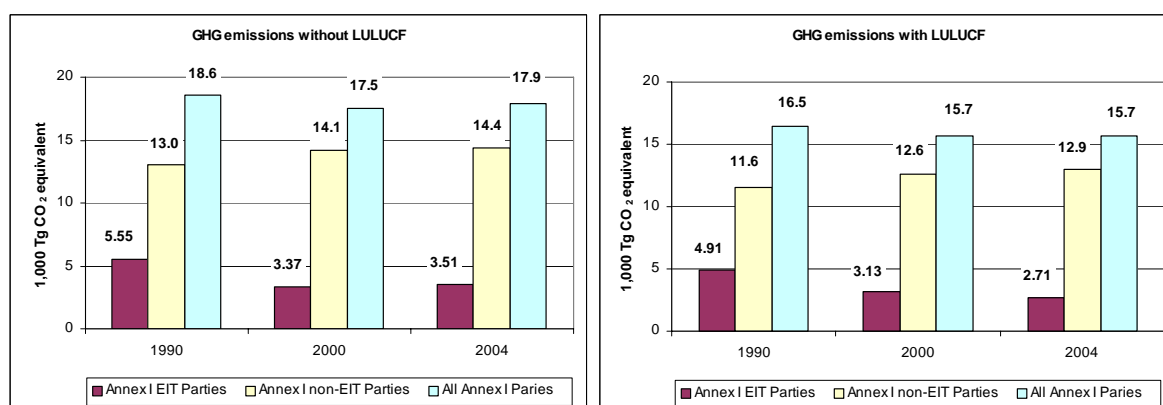


**Data appendices to
UNFCCC presentation at the AWG workshop***

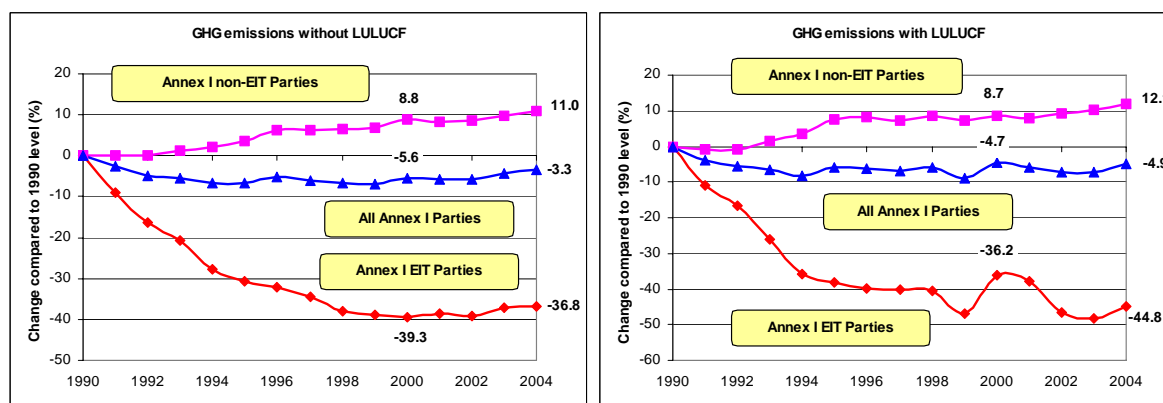
Nairobi, Kenya; 7 November 2006

Figure 1. GHG emissions from Annex I Parties, 1990, 2000 and 2004



Note: For greenhouse gas (GHG) emissions with land use, land-use change and forestry (LULUCF), data for Estonia, Lithuania, Luxembourg, Poland, Slovenia, Switzerland and Turkey are not included because of the unavailability or incompleteness of some LULUCF data in the period 1990–2004.

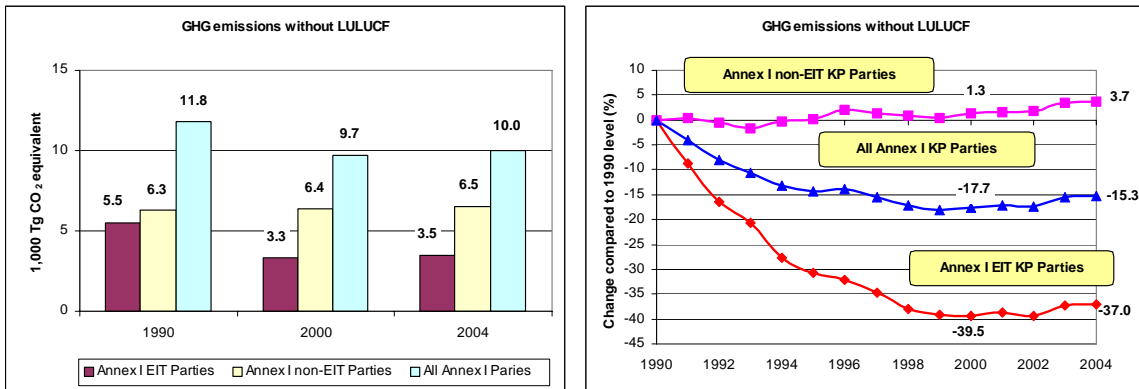
Figure 2. Changes in GHG emissions from Annex I Parties, 1990–2004



Note: For greenhouse gas (GHG) emissions with land use, land-use change and forestry (LULUCF), data for Estonia, Lithuania, Luxembourg, Poland, Slovenia, Switzerland and Turkey are not included because of the unavailability or incompleteness of some LULUCF data in the period 1990–2004.

* More data on GHG emissions trends can be found on the UNFCCC GHG webpage http://unfccc.int/ghg_emissions_data/items/3800.php.

Figure 3. GHG emissions from Annex I Parties that are Parties to the Kyoto Protocol, 1990–2004



Note: Base year data are used here instead of 1990 data (in accordance with decisions 9/CP.2 and 11/CP.4) for Bulgaria (1988), Hungary (average of 1985–1987), Poland (1988), Romania (1989) and Slovenia (1986). These are base year data under the Climate Change Convention and not base year data under the Kyoto Protocol, which will be defined by Parties in their initial reports under the Kyoto Protocol to be submitted by 1 January 2007.

Table 1. Total aggregate anthropogenic emissions of CO₂, CH₄, N₂O, HFCs, PFCs and SF₆, excluding emissions/removals from land use, land-use change and forestry, 1990, 1995 and 2000–2004

Party	Gg CO ₂ equivalent							Change from 1990 to 2004 (%)
	1990	1995	2000	2001	2002	2003	2004	
Australia	423 074	450 243	504 196	517 407	520 073	520 199	529 230	25.1
Austria	78 944	80 218	81 263	85 130	86 843	92 511	91 299	15.7
Belarus*	127 361	72 938	69 788	68 172	68 145	69 815	74 364	-41.6
Belgium	145 766	152 339	147 411	146 841	145 090	147 530	147 873	1.4
Bulgaria ^a	132 303	83 022	64 254	64 852	62 119	67 731	67 511	-49.0
Canada	598 911	648 685	725 048	718 819	725 547	753 751	758 067	26.6
Croatia*	31 124	21 913	25 268	26 424	27 609	29 192	29 432	-5.4
Czech Republic*	196 205	154 463	149 165	149 497	144 090	147 583	147 111	-25.0
Denmark	70 416	77 423	69 585	71 152	70 330	75 541	69 620	-1.1
Estonia*	43 491	22 287	19 662	19 416	19 524	21 387	21 322	-51.0
European Community ^b	4 252 461	4 144 433	4 129 317	4 174 119	4 155 328	4 216 469	4 228 006	-0.6
Finland	71 093	71 470	69 965	75 366	77 505	85 660	81 435	14.5
France	567 094	561 765	561 436	561 660	556 084	561 093	562 635	-0.8
Germany	1 226 296	1 094 740	1 022 798	1 034 912	1 018 644	1 024 377	1 015 273	-17.2
Greece	108 742	113 195	131 756	133 288	133 017	137 284	137 633	26.6
Hungary ^a	123 145	84 360	81 875	84 546	81 556	84 334	83 924	-31.8
Iceland	3 277	3 080	3 545	3 515	3 536	3 459	3 112	-5.0
Ireland	55 614	58 923	68 729	70 550	68 985	68 361	68 460	23.1
Italy	519 600	532 642	554 611	561 290	561 790	577 411	582 520	12.1
Japan	1 272 095	1 342 084	1 345 531	1 320 588	1 352 996	1 358 324	1 355 175	6.5
Latvia*	25 893	12 184	9 929	10 660	10 581	10 705	10 746	-58.5
Liechtenstein	229					264	271	18.5
Lithuania*	50 934			20 356	19 588	17 224	20 193	-60.4
Luxembourg	12 688	9 977	9 688	9 966	10 964	11 433	12 722	0.3
Monaco	108	115	117	119	117	111	104	-3.1
Netherlands	212 963	225 070	214 433	216 206	214 932	215 697	218 086	2.4
New Zealand	61 893	64 535	70 315	73 065	73 618	75 606	75 088	21.3
Norway	49 792	49 895	53 500	54 730	53 469	54 332	54 931	10.3
Poland ^a	564 408	417 349	386 181	382 787	370 239	382 639	388 063	-31.2
Portugal	59 954	71 263	82 178	83 728	88 198	83 682	84 546	41.0
Romania ^a	262 281	176 670	131 842	136 569	142 672	148 622	154 626	-41.0
Russian Federation*	2 974 863	2 173 890	1 944 767	1 974 872	1 961 415	2 021 587	2 024 229	-32.0
Slovakia*	73 360	53 347	49 378	52 499	50 516	51 091	51 025	-30.4
Slovenia ^a	20 220	18 543	18 822	19 746	19 939	19 666	20 059	-0.8
Spain	287 152	317 941	384 246	384 552	402 060	408 169	427 905	49.0
Sweden	72 361	73 894	68 389	69 067	70 073	70 907	69 854	-3.5
Switzerland	52 826	51 029	51 655	52 506	51 493	52 529	53 019	0.4
Turkey ^{**}	170 187	220 864	278 924	260 963	268 849	284 135	293 810	72.6
Ukraine*	925 362	521 149	395 095	398 950	400 479	416 017	413 411	-55.3
United Kingdom	776 142	714 321	672 195	679 700	659 243	664 471	665 330	-14.3
United States of America	6 103 283	6 477 148	6 975 929	6 886 890	6 909 407	6 952 561	7 067 570	15.8

^a Data for the base year defined by decisions 9/CP.2 and 11/CP.4 (Bulgaria (1988), Hungary (average of 1985 to 1987), Poland (1988), Romania (1989), Slovenia (1986)) are used for this Party instead of 1990 data.

^b Emission estimates of the European Community are reported separately from those of its member States.

* A Party undergoing the process of transition to a market economy (an EIT Party).

** Decision 26/CP.7 invited Parties to recognize the special circumstances of Turkey, which place Turkey in a situation different from that of other Parties included in Annex I to the Convention.

Table 2. Total aggregate anthropogenic emissions of CO₂, CH₄, N₂O, HFCs, PFCs and SF₆, including emissions/removals from land use, land-use change and forestry, 1990, 1995 and 2000–2004

Party	Gg CO ₂ equivalent							Change from 1990 to 2004 (%)
	1990	1995	2000	2001	2002	2003	2004	
Australia	506 886	470 410	520 757	530 445	537 070	514 585	533 495	5.2
Austria	66 983	65 806	65 237	66 367	71 718	75 914	74 670	11.5
Belarus*	116 054	57 509	55 662	53 766	54 848	57 830	62 464	-46.2
Belgium	144 335	150 953	145 860	144 043	142 753	145 813	146 700	1.6
Bulgaria* ^a	106 997	62 566	45 447	44 268	40 624	52 868	45 403	-57.6
Canada	517 146	842 979	594 115	597 730	731 670	742 425	838 907	62.2
Croatia*	16 687	1 378	5 983	8 647	10 813	12 544	13 111	-21.4
Czech Republic*	194 474	146 694	142 338	142 483	137 984	141 894	142 306	-26.8
Denmark	70 968	75 758	71 227	70 396	68 365	73 600	67 341	-5.1
Estonia*							13 307	
European Community ^b	4 047 252	3 904 730	3 875 904	3 892 234	3 863 562	3 937 559	3 941 605	-2.6
Finland	49 711	56 092	53 673	56 341	58 641	67 815	62 949	26.6
France	543 719	534 185	527 547	521 721	508 864	510 693	510 818	-6.1
Germany	1 198 055	1 063 578	988 866	1 000 206	983 716	988 929	979 442	-18.2
Greece	105 549	108 826	128 797	127 990	127 561	131 755	132 231	25.3
Hungary* ^a	120 408	76 312	78 656	80 093	77 001	79 496	78 405	-34.9
Iceland	5 372	5 113	5 491	5 445	5 447	5 346	4 963	-7.6
Ireland	55 722	59 129	68 727	70 376	68 793	67 978	68 389	22.7
Italy	439 879	429 436	454 899	451 133	447 455	466 070	477 412	8.5
Japan	1 197 474	1 260 713	1 260 566	1 235 780	1 267 663	1 263 346	1 260 296	5.2
Latvia*	5 223	-5 465	-4 181	-3 527	-2 545	-2 930	-3 158	-160.5
Liechtenstein	190						235	23.3
Lithuania*						10 234	24 547	
Luxembourg								
Monaco	108	115	117	119	117	111	104	-3.1
Netherlands	215 355	227 271	216 850	218 594	217 314	218 071	220 441	2.4
New Zealand	42 915	49 450	50 099	52 551	52 374	52 864	50 606	17.9
Norway	35 224	36 071	28 242	27 615	27 224	28 347	28 623	-18.7
Poland* ^a							361 907	
Portugal	63 484	69 361	78 095	79 831	83 773	91 603	81 804	28.9
Romania* ^a	226 338	139 215	95 017	98 902	107 542	113 822	119 959	-47.0
Russian Federation*	3 165 135	2 034 099	2 310 060	2 224 094	1 784 954	1 659 440	1 825 709	-42.3
Slovakia*	70 972	50 663	46 992	47 291	45 290	46 276	46 795	-34.1
Slovenia* ^a		13 526	13 647	14 471	14 443	14 348	14 415	
Spain	264 125	293 194	354 026	352 792	370 637	377 935	397 362	50.4
Sweden	50 244	56 816	50 276	52 909	53 565	54 567	53 375	6.2
Switzerland	51 047							
Turkey**								
Ukraine*	891 541	478 741	357 059	356 958	363 154	376 803	381 274	-57.2
United Kingdom	779 072	715 367	671 776	679 129	658 145	663 312	663 407	-14.8
United States of America	5 198 588	5 868 408	6 222 796	6 125 140	6 147 158	6 184 290	6 294 315	21.1

Note: Negative values in Gg mean removals; positive values in Gg mean emissions.

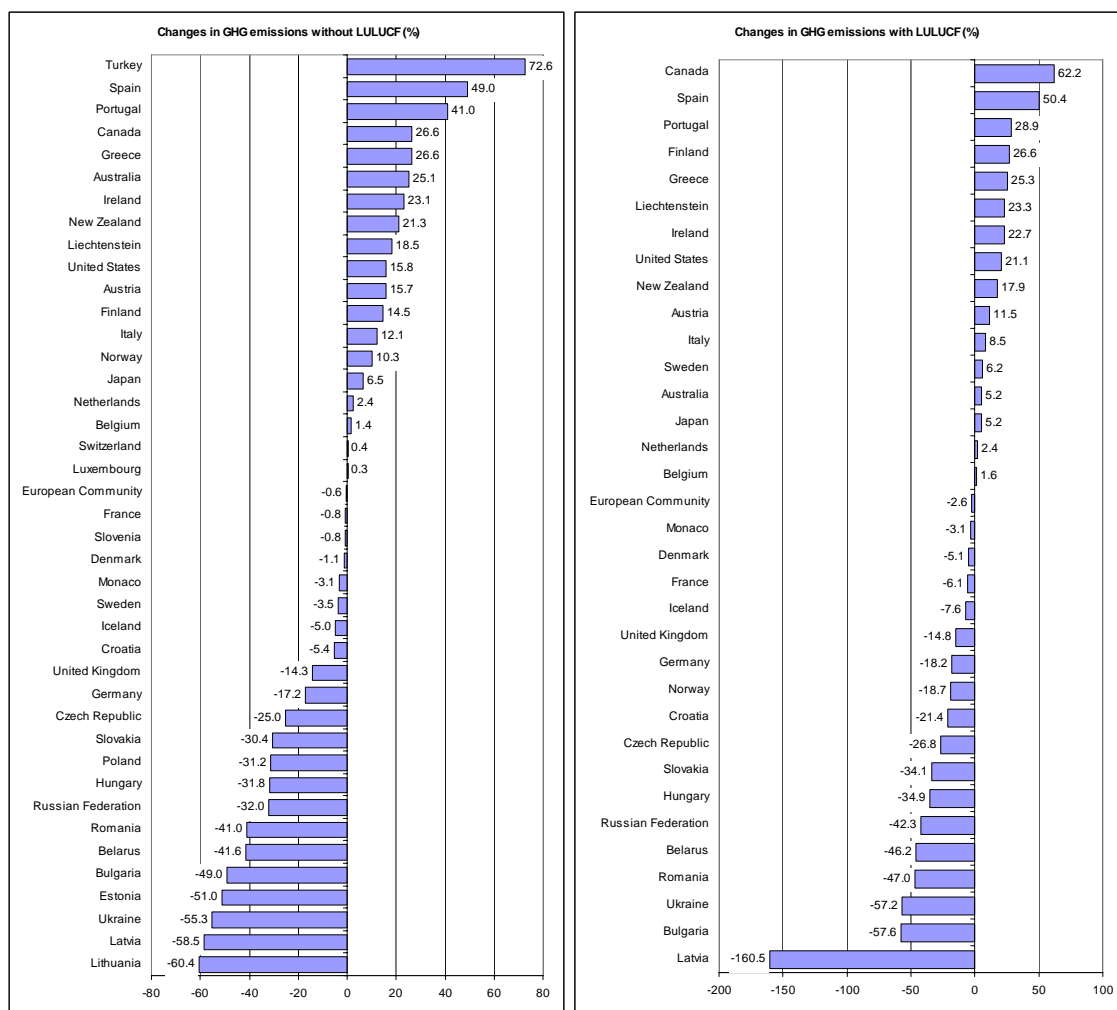
^a Data for the base year defined by decisions 9/CP.2 and 11/CP.4 (Bulgaria (1988), Hungary (average of 1985 to 1987), Poland (1988), Romania (1989), Slovenia (1986)) are used for this Party instead of 1990 data.

^b Emission estimates of the European Community are reported separately from those of its member States.

* A Party undergoing the process of transition to a market economy (an EIT Party).

** Decision 26/CP.7 invited Parties to recognize the special circumstances of Turkey, which place Turkey in a situation different from that of other Parties included in Annex I to the Convention.

Figure 4. Changes in total aggregate greenhouse gas emissions of individual Annex I Parties, 1990–2004



Note: For greenhouse gas (GHG) emissions with land use, land-use change and forestry (LULUCF), data for Estonia, Lithuania, Luxembourg, Poland, Slovenia, Switzerland and Turkey are not included because of the unavailability or incompleteness of some LULUCF data in the period 1990–2004.

Table 3. Projections of total aggregate anthropogenic GHG emissions from Annex I Parties, the “with measures” scenario for all Annex I Parties

Party	Source	Year of source	Tg CO ₂ equivalent				Changes in emissions, %	
			Base Year (UNFCCC)	1990	2010	2020	From base year to 2010	From base year to 2020
Australia	NC4	2005	417.90	417.90	563.00	640.80	34.7	53.3
Austria	NC4	2006	78.94	78.94	92.40		17.1	
Belarus	NC2	2006	130.67	130.67	105.10	113.14	-19.6	-13.4
Belgium	RDP	2005	145.66	145.66	148.50	154.00	1.9	5.7
Bulgaria	NC4	2006	138.38	119.92	90.98	105.05	-34.3	-24.1
Canada	IDR3	2003	607.59	607.59	809.00	891.30	33.1	46.7
Croatia	IDR1	2002	30.85	30.85	34.85	40.79	13.0	32.2
Czech Republic	NC4	2006	192.01	192.01	145.30	121.60	-24.3	-36.7
Denmark	NC4	2005	69.33	69.33	72.52	67.85	4.6	-2.1
Estonia	NC4	2005	37.50	37.50	16.50		-56.0	
European Community	NC4	2006	4145.00	4145.00	4080.00		-1.6	
Finland	RDP	2006	71.48	71.48	78.54	82.20	9.9	15.0
France	NC4	2006	568.00	568.00	603.00	632.00	6.2	11.3
Germany	NC4	2006	1275.00	1275.00	1003.00	1013.00	-21.3	-20.5
Greece	NC4	2006	109.42	109.42	150.41	166.84	37.5	52.5
Hungary	NC4	2006	122.22	103.35	87.38	97.85	-28.5	-19.9
Iceland	NC4	2006	3.28	3.28	3.29		0.4	
Ireland	IDR3	2005	53.24	53.24	70.43		32.3	
Italy	IDR3	2004	520.58	520.58	540.10		3.7	
Japan	NC4	2006	1187.30	1187.30	1311.00		10.4	
Latvia	NC4	2006	25.35	25.35	13.67	16.56	-46.1	-34.7
Liechtenstein	NC4	2006	0.23	0.23	0.24		4.8	
Lithuania	NC3&4	2005	50.49	50.49	25.18	27.36	-50.1	-45.8
Luxembourg								
Monaco								
Netherlands	NC4	2005	211.70	211.70	215.70	221.70	1.9	4.7
New Zealand	NC4	2006	61.52	61.52	82.43	91.18	34.0	48.2
Norway	NC4	2006	50.10	50.10	61.80	68.70	23.4	37.1
Poland	IDR3	2003	476.63	371.50	362.00	380.00	-24.0	-20.3
Portugal	NC4	2006	60.13	60.13	87.96	96.00	46.3	59.7
Romania	RDP	2006	265.12	232.94	164.62	181.10	-37.9	-31.7
Russian Federation	NC4	2006	2961.00	2961.00	2331.00	2831.00	-21.3	-4.4
Slovakia	NC4	2005	71.90	71.90	55.76	69.56	-22.4	-3.3
Slovenia	NC4	2006	20.19	18.57	21.19	20.45	5.0	1.3
Spain	NC4	2006	283.86	283.86	436.34	528.93	53.7	86.3
Sweden	NC4	2005	72.21	72.21	71.50	76.60	-1.0	6.1
Switzerland	NC4	2005	52.45	52.45	50.77	49.29	-3.2	-6.0
Turkey								
Ukraine	NC2	2006	925.40	925.40	482.30	571.30	-47.9	-38.3
United Kingdom	NC4	2006	763.40	763.40	622.23	620.77	-18.5	-18.7
United States	IDR3	2004	6129.12	6129.12	8115.00	9290.00	32.4	51.6

Note 1: NC4 = fourth national communication; NC3 = third national communication; NC3&4 = combined third and fourth communication; NC2 = second national communication; RDP = report on demonstrable progress; IDR1 = in-depth review of the first national communication; IDR3 = in-depth review of the third national communication.

Note 2: Not all projections data have been checked for consistency and reviewed under the corresponding processes under the Climate Change Convention and its Kyoto Protocol. Changes are possible as a result of in-depth reviews of national communications.

Table 4. Projections of total aggregate anthropogenic GHG emissions from Annex I Parties, the “with measures” scenario for Annex I Parties that are Parties to the Kyoto Protocol

Party	Source	Year of source	Tg CO ₂ equivalent		Changes in emissions, %	
			Base year (Kyoto Protocol)	Average 2008–2012	From base year to 2008–2012	Kyoto Protocol target
Austria	NC4	2006	78.94	92.40	17.1	-13.0
Belarus	NC2	2006	130.67	105.10	-19.6	
Belgium	RDP	2005	146.80	148.50	1.2	-7.5
Bulgaria	NC4	2006	138.38	87.09	-37.1	-8.0
Canada	IDR3	2003	607.59	809.00	33.1	-6.0
Czech Republic	NC4	2006	192.01	145.30	-24.3	-8.0
Denmark	NC4	2005	69.61	72.52	4.2	-21.0
Estonia	NC4	2005	37.50	16.50	-56.0	-8.0
European Community	NC4	2006	4145.00	4080.00	-1.6	-8.0
Finland	RDP	2006	71.48	79.90	11.8	0.0
France	NC4	2006	568.00	603.00	6.2	0.0
Germany	NC4	2006	1275.00	1003.00	-21.3	-21.0
Greece	NC4	2006	111.68	150.41	34.7	25.0
Hungary	NC4	2006	122.22	88.05	-28.0	-6.0
Iceland	NC4	2006	3.28	3.29	0.4	10.0
Ireland	IDR3	2005	53.24	70.43	32.3	13.0
Italy	IDR3	2004	520.58	540.10	3.7	-6.5
Japan	NC4	2006	1237.00	1311.00	6.0	-6.0
Latvia	NC4	2006	25.35	13.67	-46.1	-8.0
Liechtenstein	NC4	2006	0.23	0.24	4.8	-8.0
Lithuania	NC3&4	2005	50.49	25.18	-50.1	-8.0
Luxembourg						-28.0
Monaco						-8.0
Netherlands	NC4	2005	213.00	215.70	1.3	-6.0
New Zealand	NC4	2006	61.52	82.43	34.0	0.0
Norway	NC4	2006	50.10	61.80	23.4	1.0
Poland	IDR3	2003	476.63	362.00	-24.0	-6.0
Portugal	NC4	2006	60.78	87.96	44.7	27.0
Romania	RDP	2006	265.12	164.62	-37.9	-8.0
Russian Federation	NC4	2006	2961.00	2331.00	-21.3	0.0
Slovakia	NC4	2005	71.90	55.76	-22.4	-8.0
Slovenia	NC4	2006	20.24	21.19	4.7	-8.0
Spain	NC4	2006	286.09	439.49	53.6	15.0
Sweden	NC4	2005	72.21	71.50	-1.0	4.0
Switzerland	NC4	2005	52.45	50.77	-3.2	-8.0
Ukraine	NC2	2006	925.40	482.30	-47.9	0.0
United Kingdom	NC4	2006	766.33	622.23	-18.8	-12.5

Note 1: NC4 = fourth national communication; NC3 = third national communication; NC3&4 = combined third and fourth communication; NC2 = second national communication; RDP = report on demonstrable progress; IDR1 = in-depth review of the first national communication; IDR3 = in-depth review of the third national communication.

Note 2: Not all projections data have been checked for consistency and reviewed under the corresponding processes under the Climate Change Convention and its Kyoto Protocol. Changes are possible as a result of in-depth reviews of national communications.

Note 3: For the Parties that are member States of the European Union, the Kyoto Protocol targets shown are targets defined by the “burden-sharing” agreement of the European Community.

Figure 5. Projected changes in GHG emissions without LULUCF, 1990–2010 the "with measures" scenario

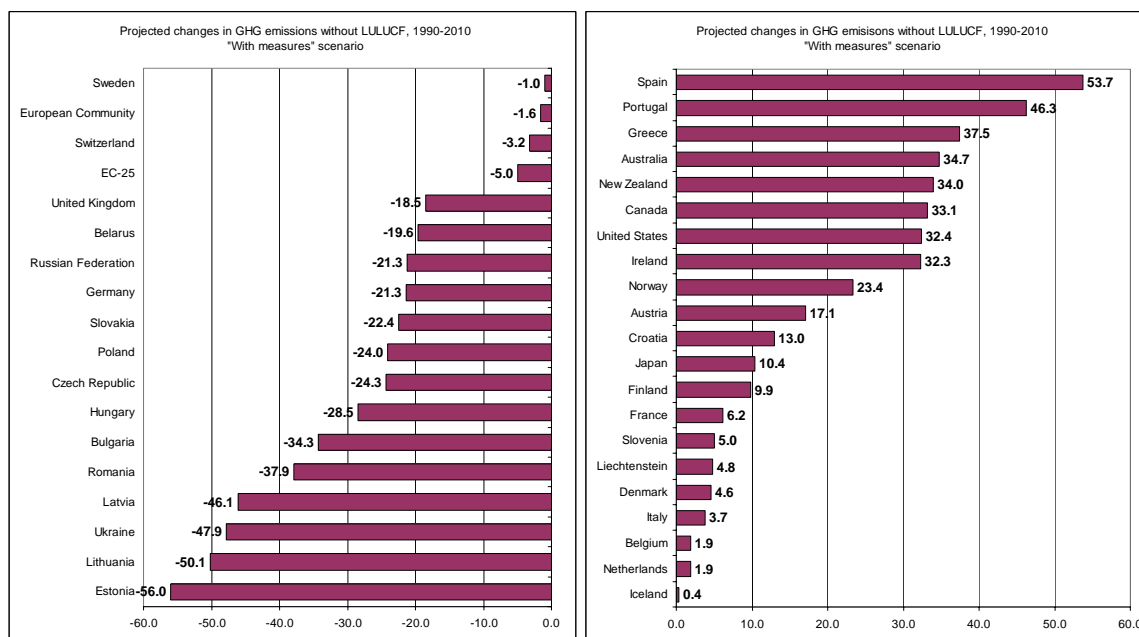


Table 5. Projections of total aggregate anthropogenic GHG emissions from Annex I Parties, the "with additional measures" scenario for all Annex I Parties

Party	Source	Year of source	Tg CO ₂ equivalent			Changes in emissions, %	
			Base Year (UNFCCC)	1990	2010	2020	From base year to 2010
Austria	NC4	2006	78.94	78.94	78.00		-1.2
Belgium	RDP	2005	145.66	145.66	145.70	145.60	0.0
Bulgaria	NC4	2006	138.38	119.92	82.81	93.64	-40.2
Canada	IDR3	2003	607.59	607.59	744.00	804.30	22.5
Croatia	IDR1	2002	30.85	30.85	31.36	33.28	1.7
Czech Republic	NC4	2006	192.01	192.01	140.70	118.70	-26.7
Estonia	NC4	2005	37.50	37.50	16.50	15.27	-56.0
European Community	NC4	2006	4145.00	4145.00	3862.00		-6.8
Finland	RDP	2006	71.48	71.48	69.71	69.42	-2.5
France	NC4	2006	568.00	568.00	568.00	556.00	-2.1
Germany	NC4	2006	1275.00	1275.00	901.00	757.00	-29.3
Greece	NC4	2006	109.42	109.42	139.53		27.5
Hungary	NC4	2006	122.22	103.35	87.09	93.67	-28.7
Ireland	IDR3	2005	53.24	53.24	55.01		3.3
Italy	IDR3	2004	520.58	520.58	496.25		-4.7
Japan	NC4	2006	1187.30	1187.30	1231.00		3.7
Latvia	NC4	2006	25.35	25.35	13.03	14.05	-48.6
Netherlands	NC4	2005	211.70	211.70	210.30	216.30	-0.7
Portugal	NC4	2006	60.13	60.13	83.71	94.01	39.2
Romania	RDP	2006	265.12	232.94	158.71	176.45	-40.1
Slovakia	NC4	2005	71.90	71.90	54.12	66.33	-24.7
Slovenia	NC4	2006	20.19	18.57	19.90	18.95	-1.4

Note 1: NC4 = fourth national communication; NC3 = third national communication; NC3&4 = combined third and fourth communication; NC2 = second national communication; RDP = report on demonstrable progress; IDR1 = in-depth review of the first national communication; IDR3 = in-depth review of the third national communication.

Note 2: Not all projections data have been checked for consistency and reviewed under the corresponding processes under the Climate Change Convention and its Kyoto Protocol. Changes are possible as a result of in-depth reviews of national communications.

Table 6. Projections of total aggregate anthropogenic GHG emissions from Annex I Parties, the “with additional measures” scenario for Annex I Parties that are Parties to the Kyoto Protocol

Party	Source	Year of source	Tg CO ₂ equivalent		Changes in emissions, %	
			Base year (Kyoto Protocol)	Average 2008–2012	From base year to 2008–2012	Kyoto Protocol target
Austria	NC4	2006	78.94	78.00		-13.0
Belgium	RDP	2005	146.80	145.70	-0.7	-7.5
Bulgaria	NC4	2006	138.38	80.21	-42.0	-8.0
Canada	IDR3	2003	607.59	744.00	22.5	-6.0
Czech Republic	NC4	2006	192.01	140.70	-26.7	-8.0
Estonia	NC4	2005	37.50	16.50	-56.0	-8.0
European Community	NC4	2006	4145.00	3862.00	-6.8	-8.0
Finland	RDP	2006	71.48	73.00	2.1	0.0
France	NC4	2006	568.00	568.00	0.0	0.0
Germany	NC4	2006	1275.00	901.00	-29.3	-21.0
Greece	NC4	2006	111.68	139.53	24.9	25.0
Hungary	NC4	2006	122.22	87.75	-28.2	-6.0
Ireland	IDR3	2005	53.24	55.01	3.3	13.0
Italy	IDR3	2004	520.58	496.25	-4.7	-6.5
Japan	NC4	2006	1237.00	1231.00	-0.5	-6.0
Latvia	NC4	2006	25.35	13.03	-48.6	-8.0
Netherlands	NC4	2005	213.00	210.30	-1.3	-6.0
Portugal	NC4	2006	60.78	83.71	37.7	27.0
Romania	RDP	2006	265.12	158.71	-40.1	-8.0
Slovakia	NC4	2005	71.90	54.12	-24.7	-8.0
Slovenia	NC4	2006	20.24	19.92	-1.6	-8.0
Switzerland	NC4	2005	52.45	49.47	-5.7	-8.0

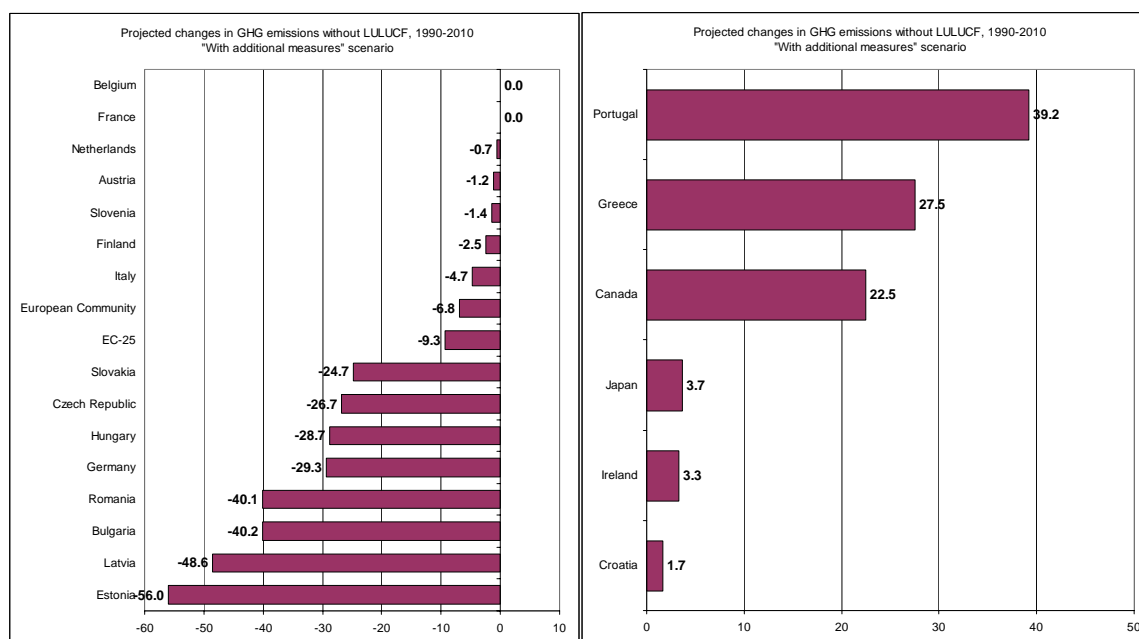
Note 1: NC4 = fourth national communication; NC3 = third national communication; NC3&4 = combined third and fourth communication; NC2 = second national communication; RDP = report on demonstrable progress; IDR1 = in-depth review of the first national communication; IDR3 = in-depth review of the third national communication.

Note 2: Not all projections data have been checked for consistency and reviewed under the corresponding processes under the Climate Change Convention and its Kyoto Protocol. Changes are possible as a result of in-depth reviews of national communications.

Note 3: For the Parties that are member States of the European Union, the Kyoto Protocol targets shown are targets defined by the “burden-sharing” agreement of the European Community.

Note 4: The projection “with additional measures” is not fully comparable with the projection “with measures”, because the number of Parties covered differs: 38 for the scenario “with measures” and 23 for the scenario “with additional measures”.

Figure 6. Projected changes in GHG emissions without LULUCF, 1990–2010 the "with additional measures" scenario



Note: The projection “with additional measures” is not fully comparable with the projection “with measures”, because the number of Parties covered differs: 38 for the scenario “with measures” and 23 for the scenario “with additional measures”.