

Work of the Least Developed Countries Expert Group (LEG) in supporting LDCs to address adaptation through NAPAs and the NAP process

ADP 2.2

Workshop on enhancing adaptation through the 2015 agreement

Bonn, 6 June 2013



Pepetua Latasi, Chair

Least Developed Countries Expert Group (LEG)

Under its current term (2011–2015) the LEG is mandated to provide:

- Technical support and advice to the LDCs on **NAPAs**, and the **LDC work programme**
- Technical guidance and support to the **NAP process**

Relevant decisions:

- 29/CP.7,
- 6/CP.16 and
- 5/CP.17



The LEG supports LDCs through the following modalities:

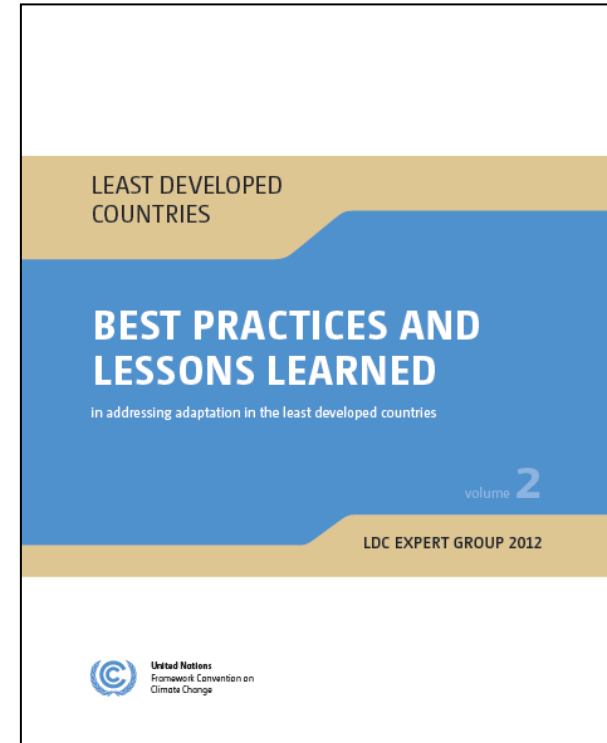
- Technical guides, papers, and outreach products
- Regional training workshops
- Information platforms for supporting LDCs, and on outreach on the work of the LEG
- Monitoring and assessing work in LDCs
- On-going surveys and case studies
- Collaboration with the GEF and its agencies, and other relevant organizations



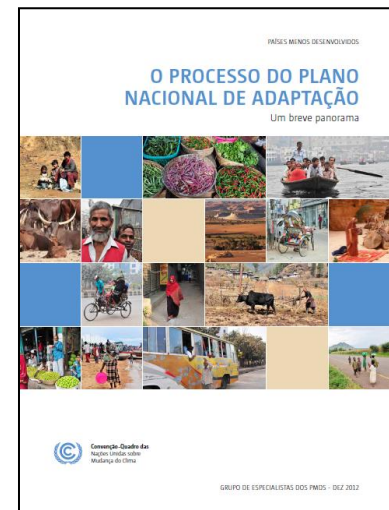
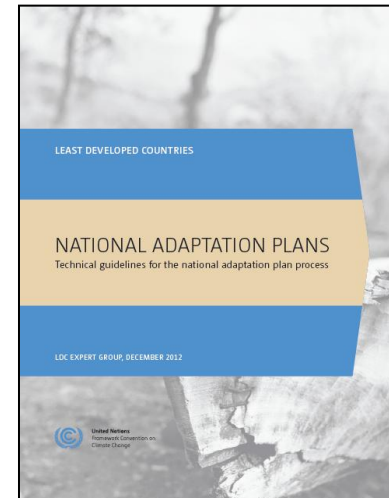
All LDCs have increased awareness at highest levels, enhanced levels of understanding of their vulnerability and the different adaptation options, and made progress in mainstreaming, in ways that go even beyond the originally envisioned objectives of the NAPA of addressing urgent and immediate needs.

For detailed information, visit the LDC Portal at
<<http://unfccc.int/4751>>:

1. Database on submitted NAPAs and projects under implementation
2. Best practices and lessons learned platform
3. Reports on the meetings of the LEG



- 1 The LEG has produced the **technical guidelines** for the NAP process; they are being disseminated in English, French and Portuguese
- 2 The LEG identified **ways it could further support the LDCs over the next 2 years to prepare their NAPs** based on inputs and feedback from LDC Parties
- 3 The **support needs** indicate a range of activities that would need to be progressively addressed for a successful NAP process; however, LDCs are able to embark on the NAP process before all support needs have been addressed
- 4 As part of its ongoing work in providing technical support to LDCs on their NAPA implementation, the LEG has started to **incorporate training on NAPs in the ongoing training workshops**
- 5 The LEG is organizing the event **NAP Expo: Launching the NAP process in LDCs**, 9 June 2013 from 10:00 to 18:00 hrs, in Beethovenhalle, Bonn City



The LEG is putting in place the following **strategic building blocks** in the next 2-3 years for supporting successful NAP processes in LDCs:

Developing **materials supplementary** to the NAP technical guidelines, in order to offer in-depth coverage of selected steps, in collaboration with relevant organizations and adaptation experts.

Developing the **NAP Central**, a common information system to support the NAP process, and to provide a gateway to various aspects of adaptation planning

Working closely with countries to capture experiences and success stories, and to gain a good understanding of gaps and needs, as well as barriers that LDCs face in adaptation planning. These **case studies** will inform further LEG support to the NAP process

Technical support: through workshops and technical papers

Working closely with relevant organizations on support programmes for the LDCs for the NAP process, as well as other partners in the conduct of training and support activities



Supplements to the technical guidelines; some of them are expected before the end of the year, such as on the following topics:

Analysis of climate data and the development and application of climate change scenarios in assessing climate change risks at the national, sectoral and local levels

Use of appropriate geospatial data management and analysis tools to underpin assessments as part of the NAP process

Vulnerability and adaptation assessments at multiple levels and multiple sectors

Appraisal of adaptation options (economic, environmental, etc.) and ranking

The LEG is fully committed to support the LDCs in:

- Fully implementing their NAPAs
- Undertaking the NAP process through a mix of modalities, including collaboration with the Adaptation Committee and other relevant bodies, agencies and organizations



Thank you

Least Developed Countries Expert Group (LEG)

UNFCCC secretariat
P.O. Box 260124
D-53153 Bonn
Germany

Phone: (49-228) 815-1000
Fax: (49-228) 815-1999
E-mail: leghelp@unfccc.int

Web: <http://unfccc.int/ldc>

