



GLOBAL ENVIRONMENT FACILITY
INVESTING IN OUR PLANET

www.theGEF.org

Global Environment Facility and Climate Change

Ad Hoc Working Group on the Durban Platform for
Enhanced Action (ADP)

(6 June 2013)

Robert K Dixon

Head, Climate and Chemicals

The GEF Partnership

- The GEF unites 183 member countries with
 - international institutions;
 - civil society organizations (CSOs);
 - and the private sector



GLOBAL ENVIRONMENT FACILITY
INVESTING IN OUR PLANET

GEF Partner Agencies

- 10 Implementing Agencies
 - Asia Development Bank
 - African Development Bank
 - European Bank for Reconstruction and Development
 - Food and Agriculture Organization
 - Inter-American Development Bank
 - International Fund for Agricultural Development
 - United Nations Development Programme
 - United Nations Environment Programme
 - United Nations Industrial Development Organization
 - The World Bank



GLOBAL ENVIRONMENT FACILITY
INVESTING IN OUR PLANET

Climate Change

- To support developing countries and economies in transition
 - Promote innovation and technology transfer
 - Promote market transformation, investments, financial de-risking, legal and regulatory frameworks
 - Promote enabling conditions
- Climate Change Mitigation projects:
 - Investments approx. US\$4.04 billion; co-financing US\$27.2 billion
 - Direct emission reductions of about 2.6 billion tonnes of CO_{2eq} and additional 6.85 billion tonnes through market transformation are expected
- Adaptation to Climate Change (LDCF/SCCF) projects:
 - Tackling CC impacts across development sectors
 - Responsive to the needs of vulnerable developing countries
 - US\$750 million; co-financing US\$2.09 billion



GEF Enabling Activities

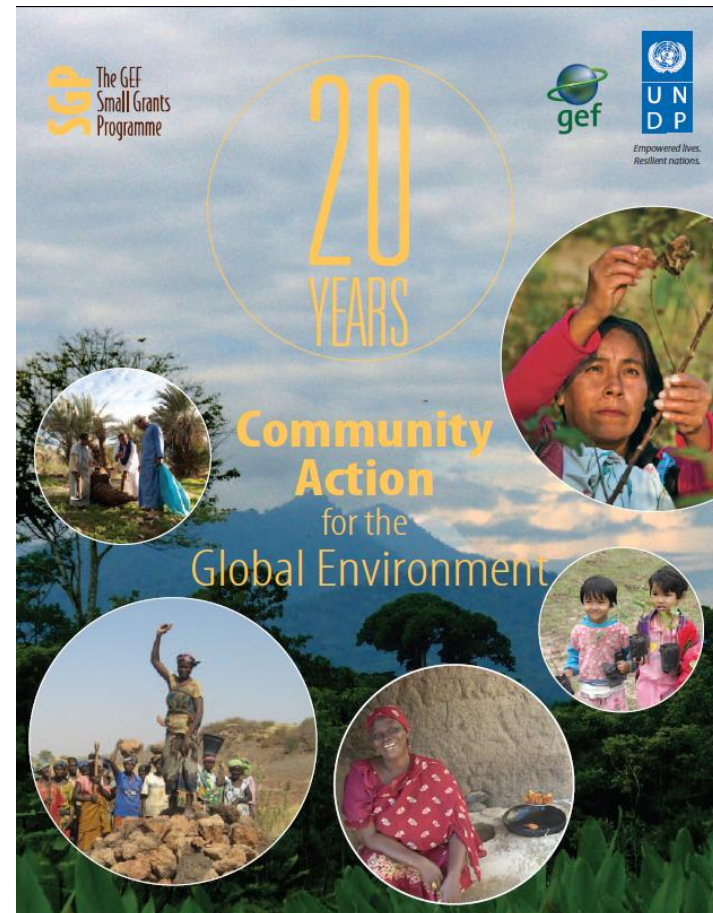
- GEF continuous support towards
 - National Adaptation Plans
 - Biennial Update Reports
 - National Communications
 - Nationally Appropriate Mitigation Actions



GLOBAL ENVIRONMENT FACILITY
INVESTING IN OUR PLANET

GEF Small Grant Programme

- Launched in 1992
- Supports NGOs, Community-based organizations in developing countries
 - towards climate change abatement,
 - conservation of biodiversity,
 - protection of international waters,
 - reduction of the impact of persistent organic pollutants (POPs),
 - and prevention of land degradation while generating sustainable livelihoods
- Over 16,500 grants to communities in more than 125 developing countries
 - Amounts to nearly US\$600 million



Thank you!!



INVESTING IN OUR PLANET

www.theGEF.org

The Global Environment Facility (GEF), as an operating entity of the financial mechanism of the UNFCCC, has supported mitigation and adaptation action through an extensive multilateral effort involving GEF grant support, co-finance, and the implementation efforts of GEF's Partner Agencies. Our work has been ongoing for over 20 years.

The GEF has financed approximately US\$4.04 billion in mitigation activities, leveraging an additional US\$27.2 billion (more detailed Report of the GEF to the Conference of the Parties 19 will soon be submitted to the UNFCCC). The GEF plays a catalytic role in mobilizing investments, enabling recipients, pioneering innovative financial instruments, and promoting market-based mechanisms leading to widespread adoption and dissemination of climate-friendly technologies. GEF has supported more than 50 climate-resilient technologies for energy efficiency, renewable energy, sustainable urban transport, and methane reduction. Consistent with the COP 19 decision, the GEF implemented the Poznan Strategic Program on Technology Transfer.

GEF investments are expected to directly reduce 2.6 billion tonnes of carbon dioxide equivalent and catalyze reduction of an additional 6.85 billion tonnes through transformation of markets. The GEF will pursue its mitigation mission through the following broad objectives: (i) promotion of innovation and technology transfer, (ii) demonstration of systemic impacts of mitigation options, and (iii) supporting the creation of enabling environments for broad-based mainstreaming of mitigation in development.

The GEF has financed about US\$750 million in concrete adaptation actions via more than 176 projects, of which 103 are NAPA implementation projects. This investment has leveraged an additional \$2.09 billion. These projects are some of the first in the world tackling the actual impacts of climate change across development sectors such as agriculture and food security, water management, disaster risk management, coastal zone management, health, and the sustainable management of ecosystems.

Thanks to these early investments by the GEF, particularly through the Least Developed Countries Fund (LDCF) and the Special Climate Change Fund (SCCF), developing countries are now gaining their first experience in how to address the impacts of climate change, and are already actively working to increase the resilience of some of the world's poorest and most vulnerable communities.

The GEF Adaptation Program will continue to rely on the following guiding principles: (i) responsiveness to COP guidance, (ii) responsiveness to the needs of vulnerable developing countries, (iii) responsiveness to independent evaluations, and (iv) complementarity and coherence with other climate change funds, while implementing thematic priorities.

Because of the GEF's unique, multifocal mission and partnership-based structure, there are opportunities to leverage co-benefits in environment and development. Through a more cohesive approach, the GEF intends to pursue a more integrated climate change agenda, including initiatives that will seek to address adaptation and mitigation simultaneously.

The GEF finances climate change initiatives that complement efforts of other climate financing mechanisms. GEF will continue to seek synergies as the global climate finance architecture evolves.

We recently embarked on the GEF 6 replenishment discussion. The first replenishment meeting was in Paris in April of this year. The next replenishment meeting will be in India in September 2013.

Sincerely,

Dr. Robert K Dixon
Head, Climate and Chemicals
Global Environment Facility
Washington D.C., USA
rdixon1@thegef.org.org