

FOREST MONITORING FOR REDD



**Monitoring deforestation and degradation
at global, regional and national levels**

Susan Braatz



UN-REDD Support

Forest monitoring and assessment

- forest area change
- change in carbon stocks

National capacity strengthening in:

- remote sensing
- ground assessments

➤ **Global Forest Resources Assessment**

➤ **National Forest Monitoring & Assessment**



1. Reliable, transparent and cost-effective

2. Common framework adaptable to local needs



3. National ownership and implementation

1946

TIMBER



1980

DEFORESTATION



2000

CONSERVATION



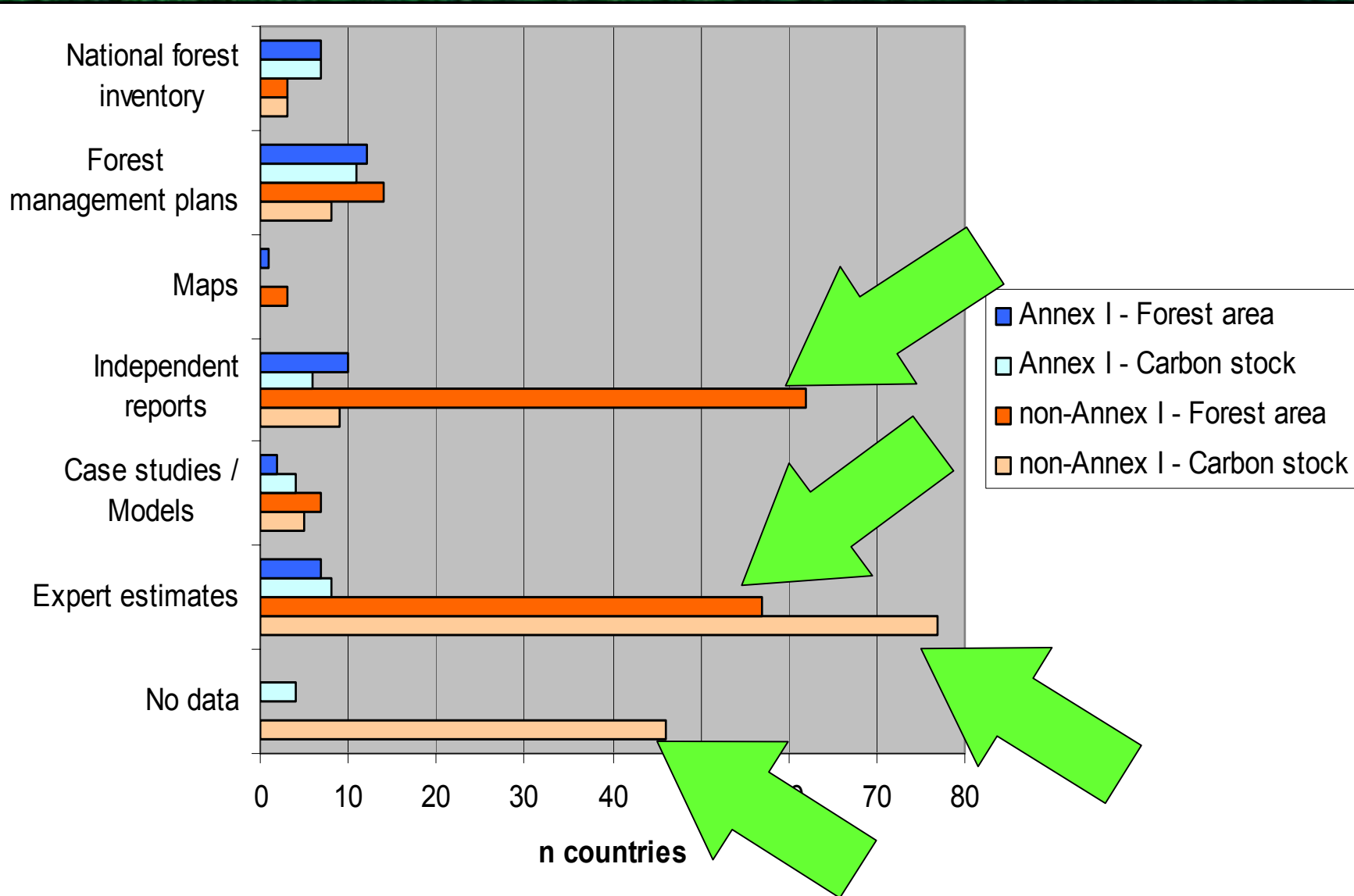
PROBLEM: POOR DATA AVAILABILITY AND QUALITY

- Relatively good information on forest area – less so on net changes
- Poor data on past and present deforestation rates
- Some information on carbon stocks
- Poor data on carbon stock changes
- No reliable information on carbon emissions from deforestation



Data sources used for estimating changes and trends in forest resources

Quality



PROPOSED SOLUTIONS

- Common global forest monitoring framework
- Support to national forest monitoring, assessment and reporting
- Capacity building on forest carbon accounting

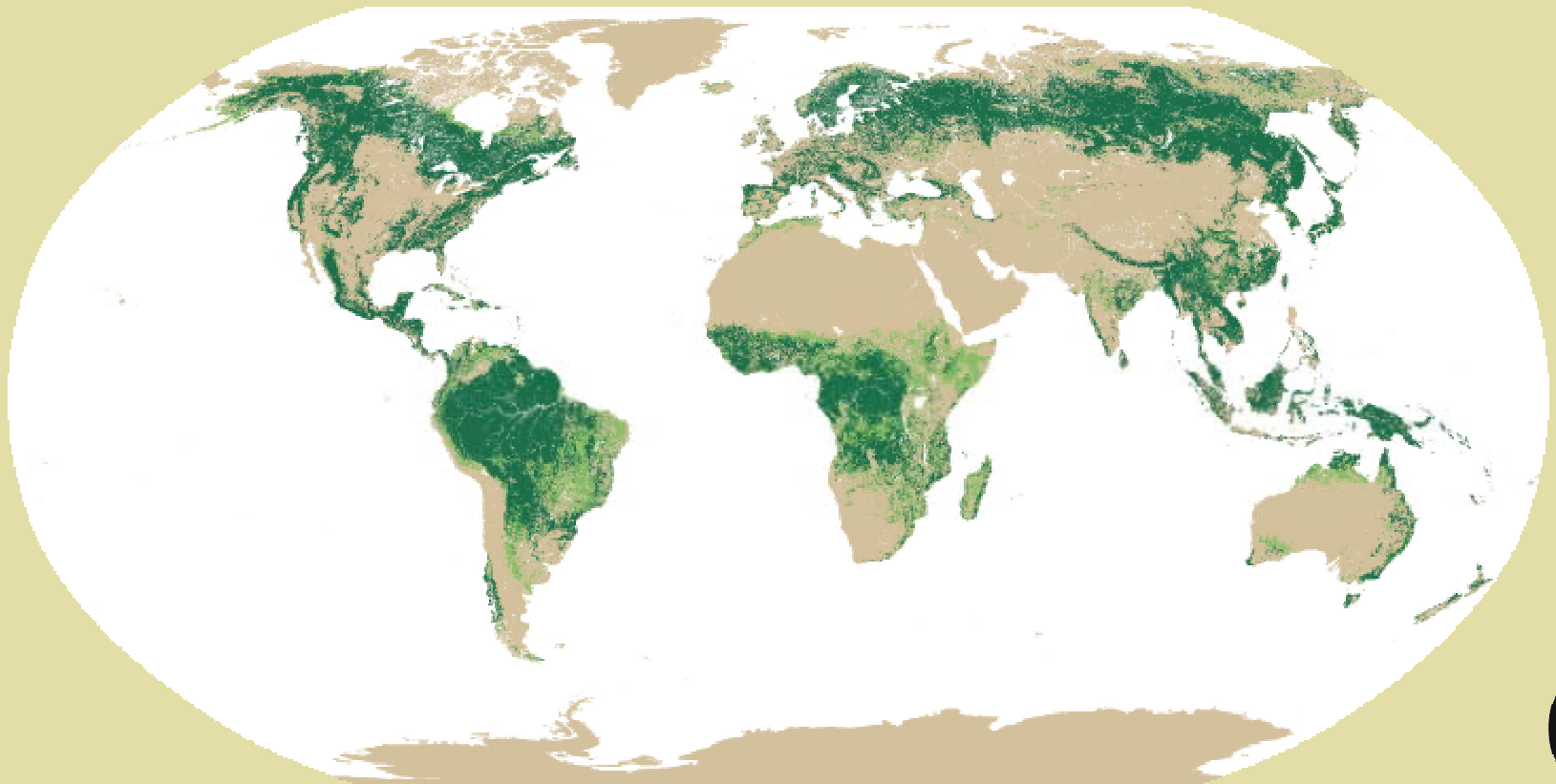


Global remote sensing survey

Distribution of forests

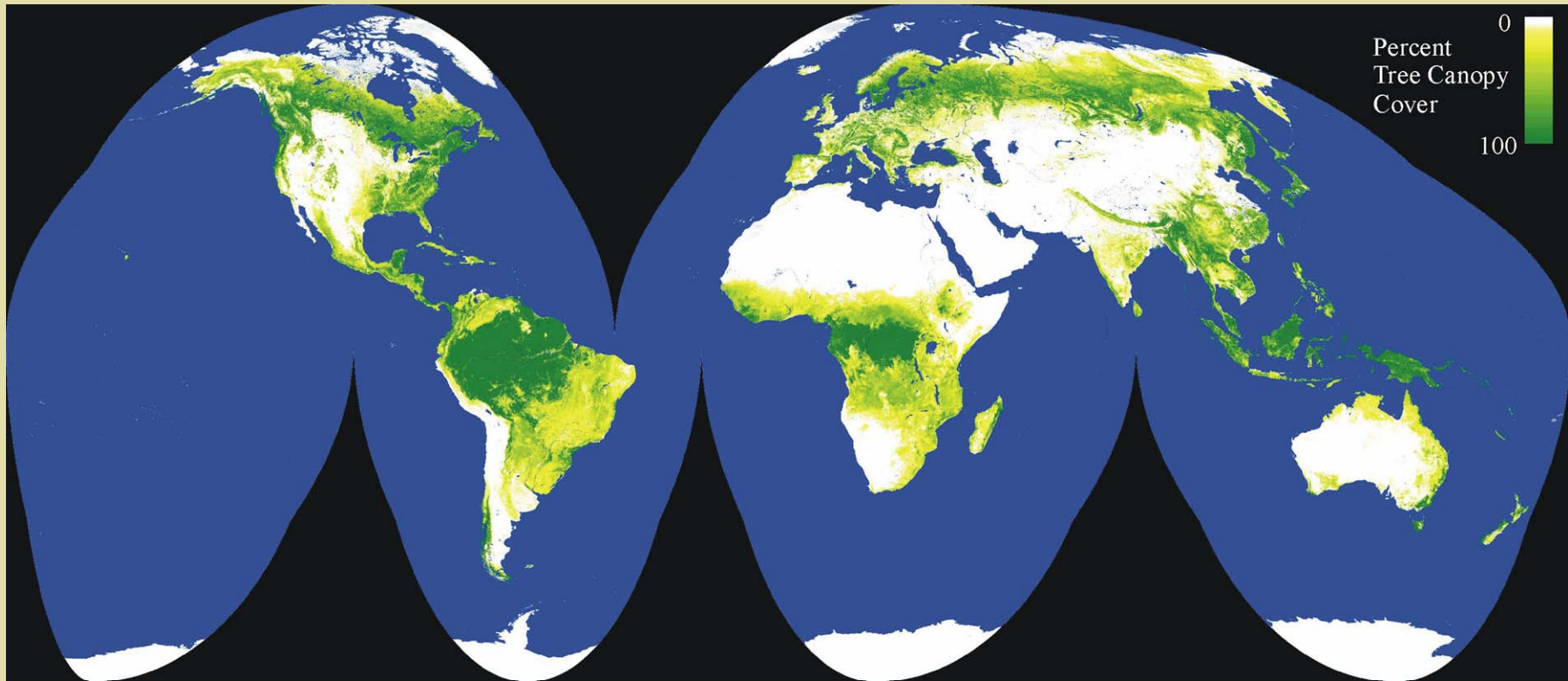
Trend statistics

Regional, biome & global level

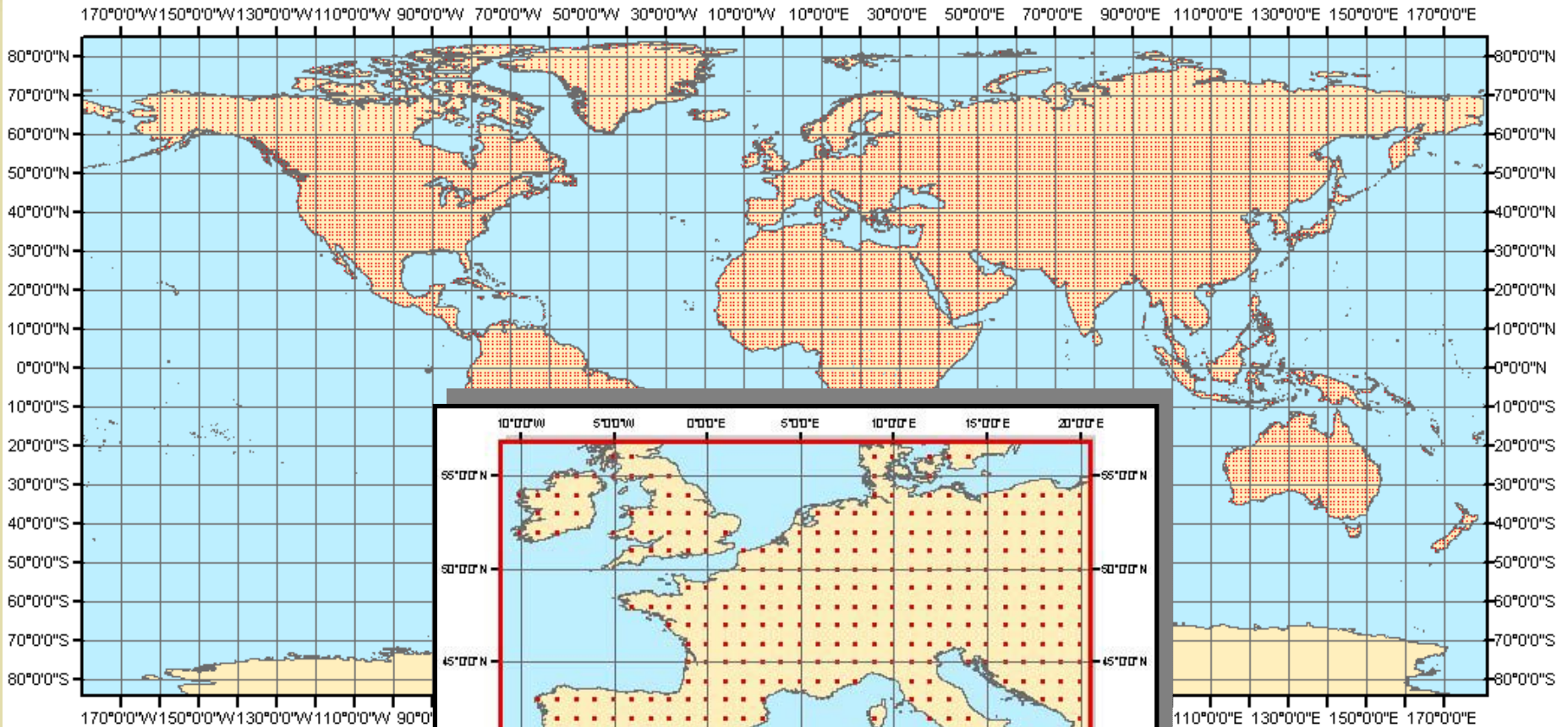


Distribution of forests

MODIS 250m (tree cover)



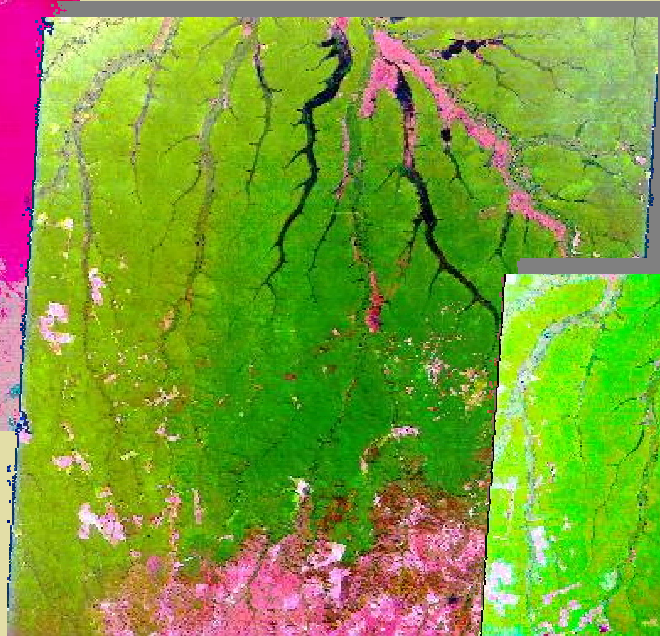
Sampling design



Timeline



1975



1990



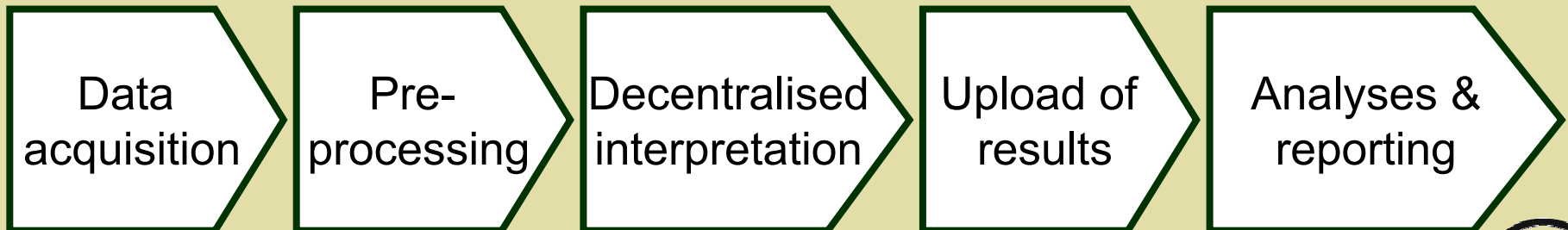
2000

2005



Implementation

- **Common framework and classification system**
- **High degree of flexibility**
- **Involvement of national teams**
- **Support to countries**



Information gateway

GIScCE Demo: FAO - Netscape

File Edit View Go Bookmarks Tools Window Help

http://globalmonitoring.sdstate.edu/projects/glose/

GIScCE Demo: FAO

Congo

- Bulgaria
- Burkina Faso
- Burundi
- Cambodia
- Cameroon
- Canada
- Cape Verde
- Cayman Is.
- Central African Republic
- Chad
- Chile
- China
- Christmas I.
- Cocos Is.
- Colombia
- Comoros
- Congo**
- Congo, DRC
- Cook Is.
- Costa Rica

A world map is displayed in the background, showing the location of Congo in Africa.

GIScCE Demo: FAO - Netscape

File Edit View Go Bookmarks Tools Window Help

http://globalmonitoring.sdstate.edu/projects/glose/

GIScCE Demo: FAO

Congo

Map base layer

- Country Boundaries only
- MODIS Land Cover (IGBP)
- MODIS Forest Cover (n/a)

Other map layers

- Cities
- Administrative units (e.g. states)
- Rivers
- Lakes

Update Map

sample sites: 32
Download sample site list: [Congo.csv](#)
Download sample site shapefile: [Congo.zip](#)
Scale: 1:10994268

SSID: 34276 Lat / Long: -3 / 12 Path/Row: 184/062 Date: 2000-04-09 UTM zone: 33		SSID: 34276 Lat / Long: -3 / 12 Path/Row: 184/062 Date: 2001-03-27 UTM zone: 33	
SSID: 34275 Lat / Long: -4 / 12 Path/Row: 184/063 Date: 2000-07-14 UTM zone: 32		SSID: 34274 Lat / Long: -5 / 12 Path/Row: 184/063 Date: 2000-07-14 UTM zone: 32	
SSID: 34456 Lat / Long: -2 / 13		SSID: 34456 Lat / Long: -2 / 13	

The map shows Congo and surrounding countries: Cameroon, Gabon, Angola, and Congo, DRC. A search bar and navigation tools are visible at the top.



Support to National Forest Monitoring and Assessment

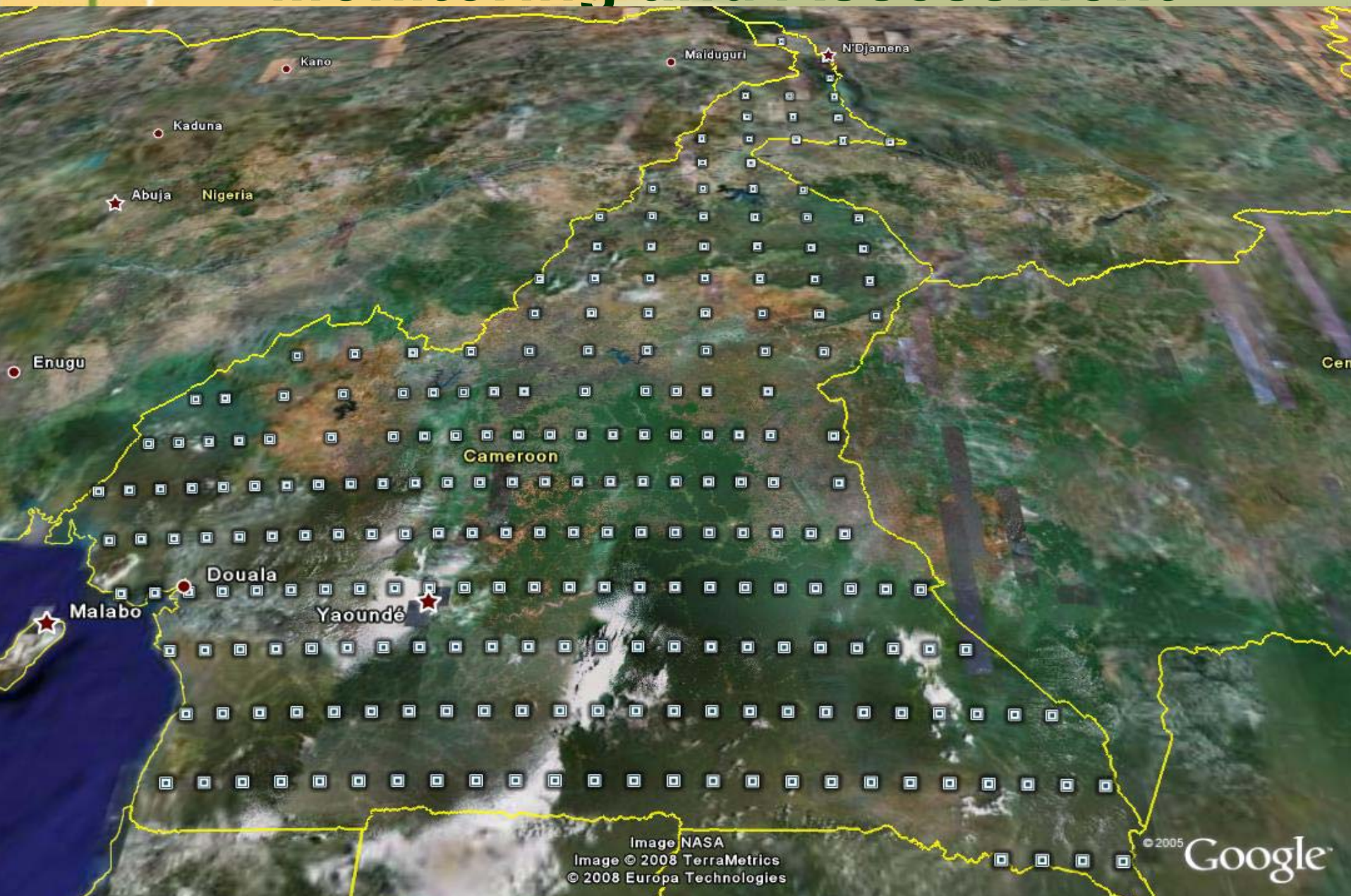


Image NASA
Image © 2008 TerraMetrics
© 2008 Europa Technologies

© 2005 Google

Forest carbon reporting

235 countries and territories

175 national correspondents



Forestry Department

Food and Agriculture Organization of the United Nations

GLOBAL FOREST RESOURCES
ASSESSMENT 2005

RUSSIAN FEDERATION

COUNTRY REPORT

Country Reports for FRA 2010

T 1	Extent of forest and other wooded land
T 2	Forest ownership and management rights
T 3	Forest designation and management
T 4	Forest characteristics
T 5	Forest establishment and regeneration
T 6	Growing stock
T 7	Biomass stock
T 8	Carbon stock
T 9	Forest fires

T 10	Other disturbances affecting forest health and vitality
T 11	Wood removal and value of removal
T 12	NWFP removal and value of removal
T 13	Employment
T 14	Policy and legal framework
T 15	Institutional framework
T 16	Education and research
T 17	Public revenue collection and expenditure



Partners



Global
Environment
Facility



UNFCCC



JRC

SDSU

NASA

JENA

GOFC-GOLD

GEO

IUCN
The World Conservation Union



THE WORLD BANK



World Agroforestry Centre
TRANSFORMING LIVES AND LANDSCAPES

Milestones

- **2008: Launch FRA 2010 (3-7 March)**
- **2008-2009: Regional workshops (country reports and remote sensing) and bulk of work for countries**
- **2010: Release of Key Findings; Report preparation & dissemination**
- **2011: Final report from global remote sensing survey**



More information

www.fao.org/forestry/fra2010

