



Summary of GHG Emissions for Greece

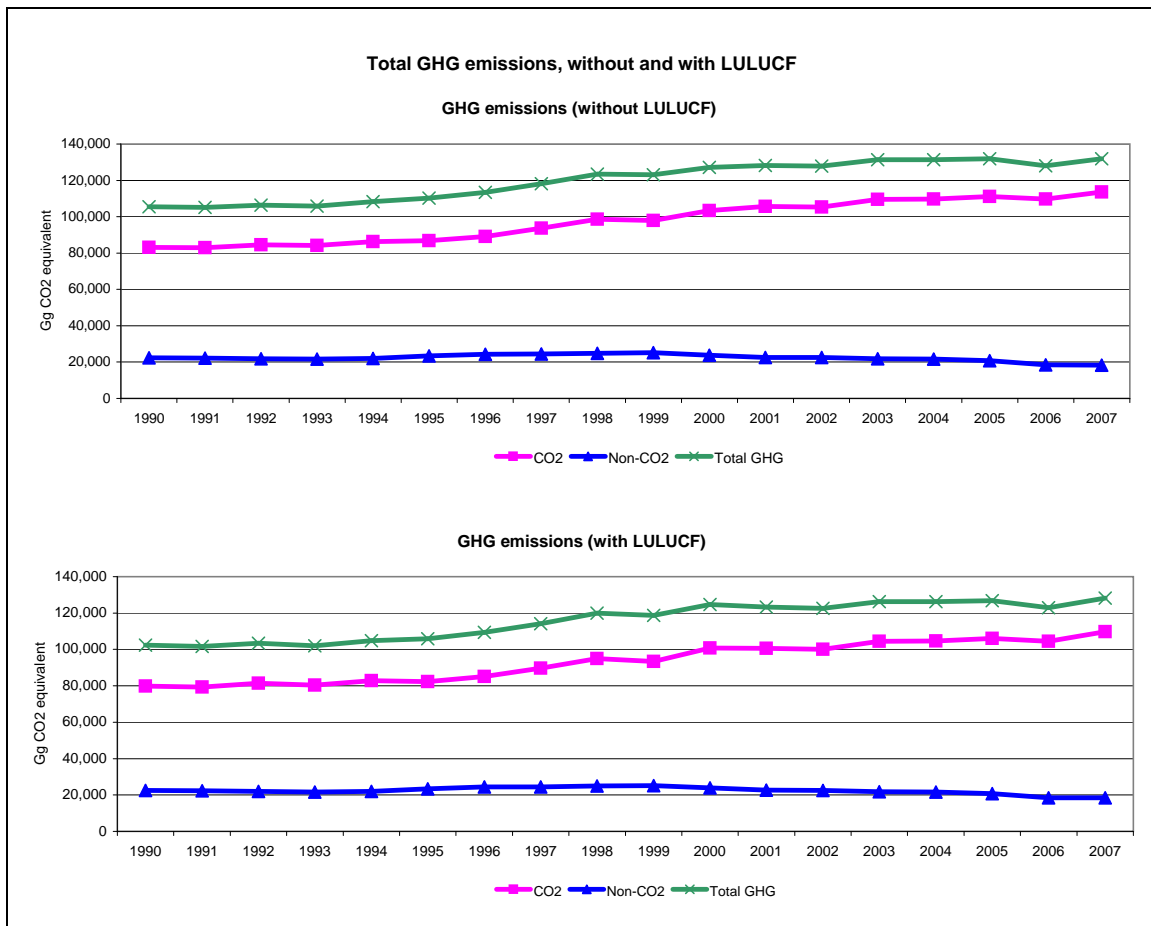
Base year (Convention) = 1990

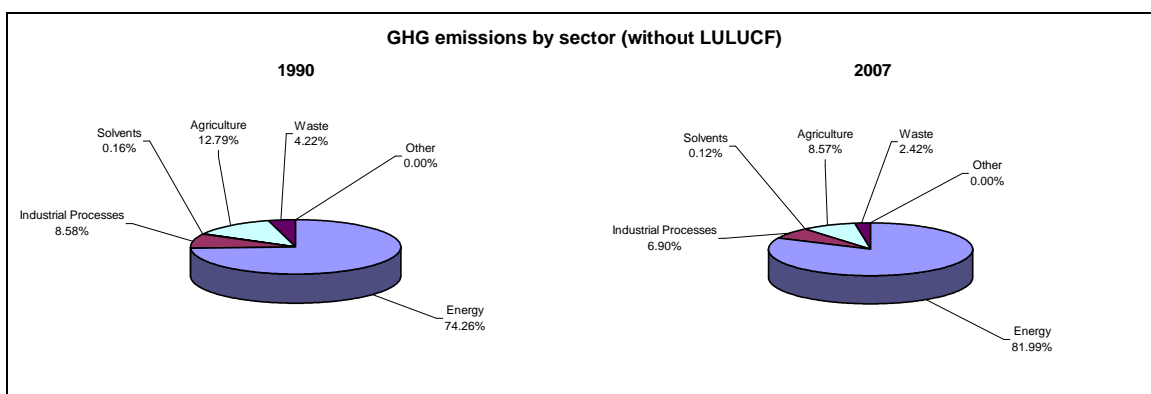
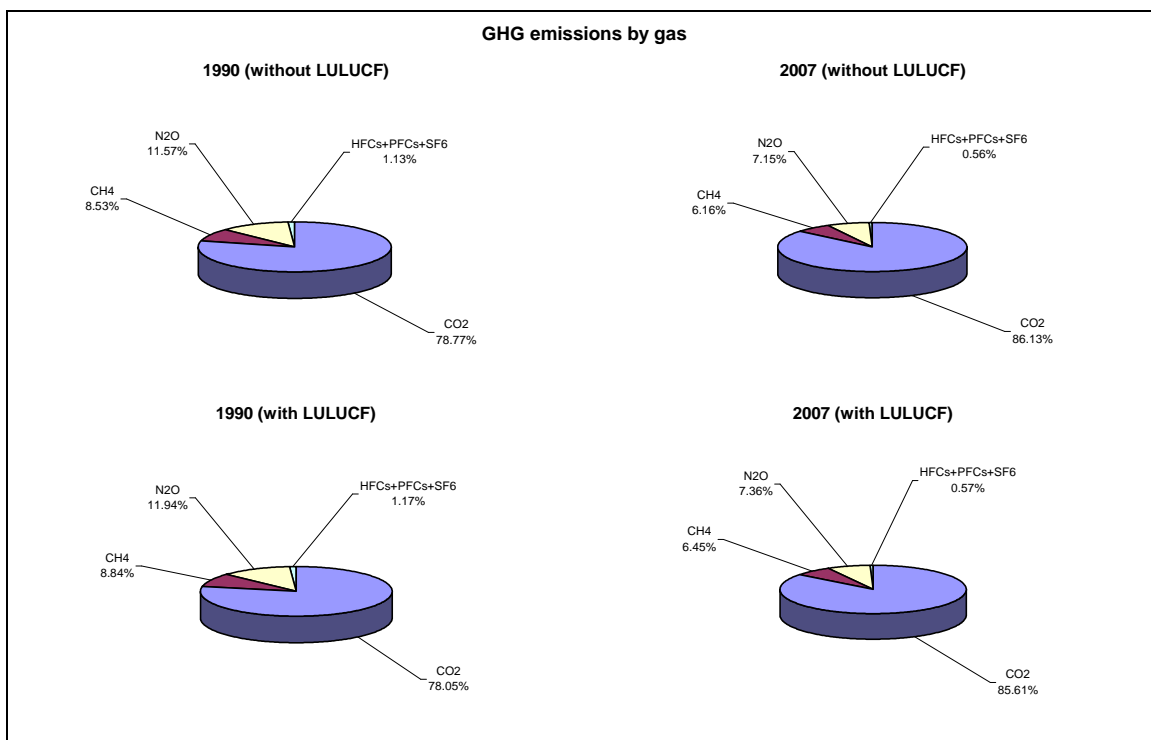
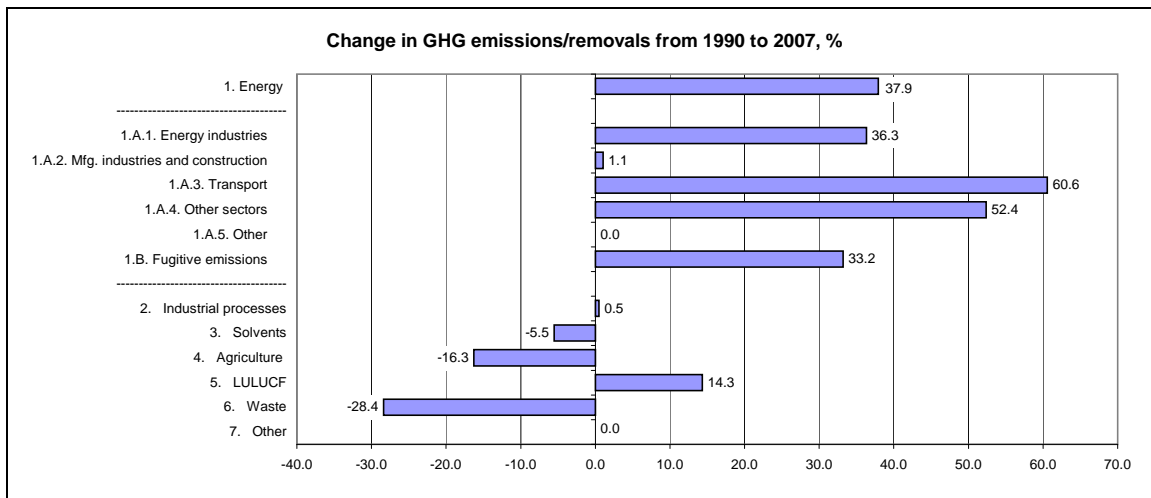
	Emissions, in Gg CO ₂ equivalent		
	1990	2000	2007
CO ₂ emissions without LULUCF	83,150.0	103,439.4	113,565.8
CO ₂ net emissions/removals by LULUCF	-3,248.2	-2,636.1	-3,808.0
CO ₂ net emissions/removals with LULUCF	79,901.8	100,803.3	109,757.9
GHG emissions without LULUCF	105,562.2	127,126.3	131,853.8
GHG net emissions/removals by LULUCF	-3,193.3	-2,453.1	-3,650.8
GHG net emissions/removals with LULUCF	102,368.9	124,673.1	128,203.1

	Changes in emissions, in per cent		
	From 1990 to 2000	From 2000 to 2007	From 1990 to 2007
CO ₂ emissions without LULUCF	24.4	9.8	36.6
CO ₂ net emissions/removals by LULUCF	-18.8	44.5	17.2
CO ₂ net emissions/removals with LULUCF	26.2	8.9	37.4
GHG emissions without LULUCF	20.4	3.7	24.9
GHG net emissions/removals by LULUCF	-23.2	48.8	14.3
GHG net emissions/removals with LULUCF	21.8	2.8	25.2

	Average annual growth rates, in per cent per year		
	From 1990 to 2000	From 2000 to 2007	From 1990 to 2007
CO ₂ emissions without LULUCF	2.2	1.3	1.9
CO ₂ net emissions/removals by LULUCF	-2.1	5.4	0.9
CO ₂ net emissions/removals with LULUCF	2.4	1.2	1.9
GHG emissions without LULUCF	1.9	0.5	1.3
GHG net emissions/removals by LULUCF	-2.6	5.8	0.8
GHG net emissions/removals with LULUCF	2.0	0.4	1.3

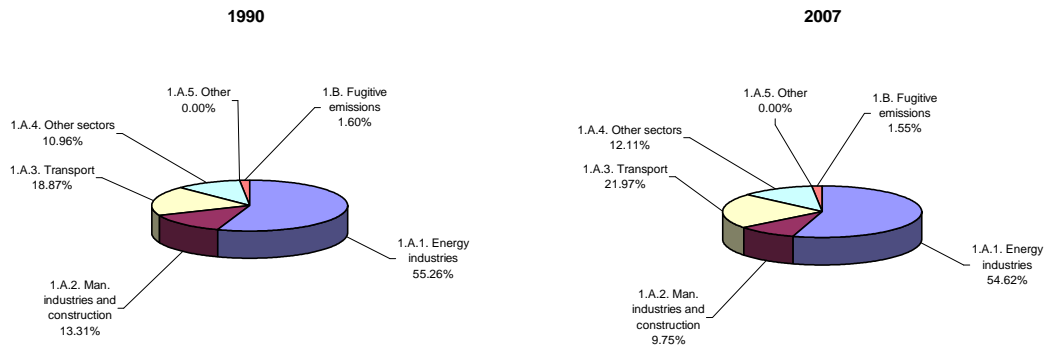
The base year under the Climate Change Convention is 1990 except for Bulgaria (1988), Hungary (average of 1985 to 1987), Poland (1988), Romania (1989) and Slovenia (1986), as defined by decisions 9/CP.2 and 11/CP.4.



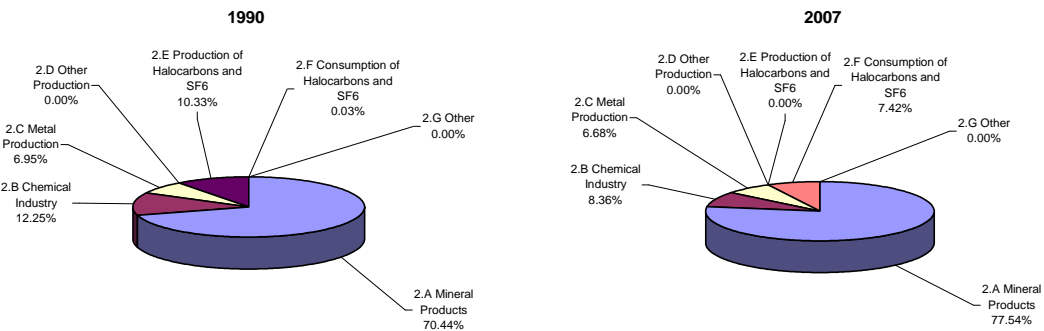




Breakdown of GHG emissions within the energy sector



Breakdown of GHG emissions within the industrial processes sector



Breakdown of GHG emissions within the agriculture sector

