



## Summary of GHG Emissions for United Kingdom of Great Britain and Northern Ireland

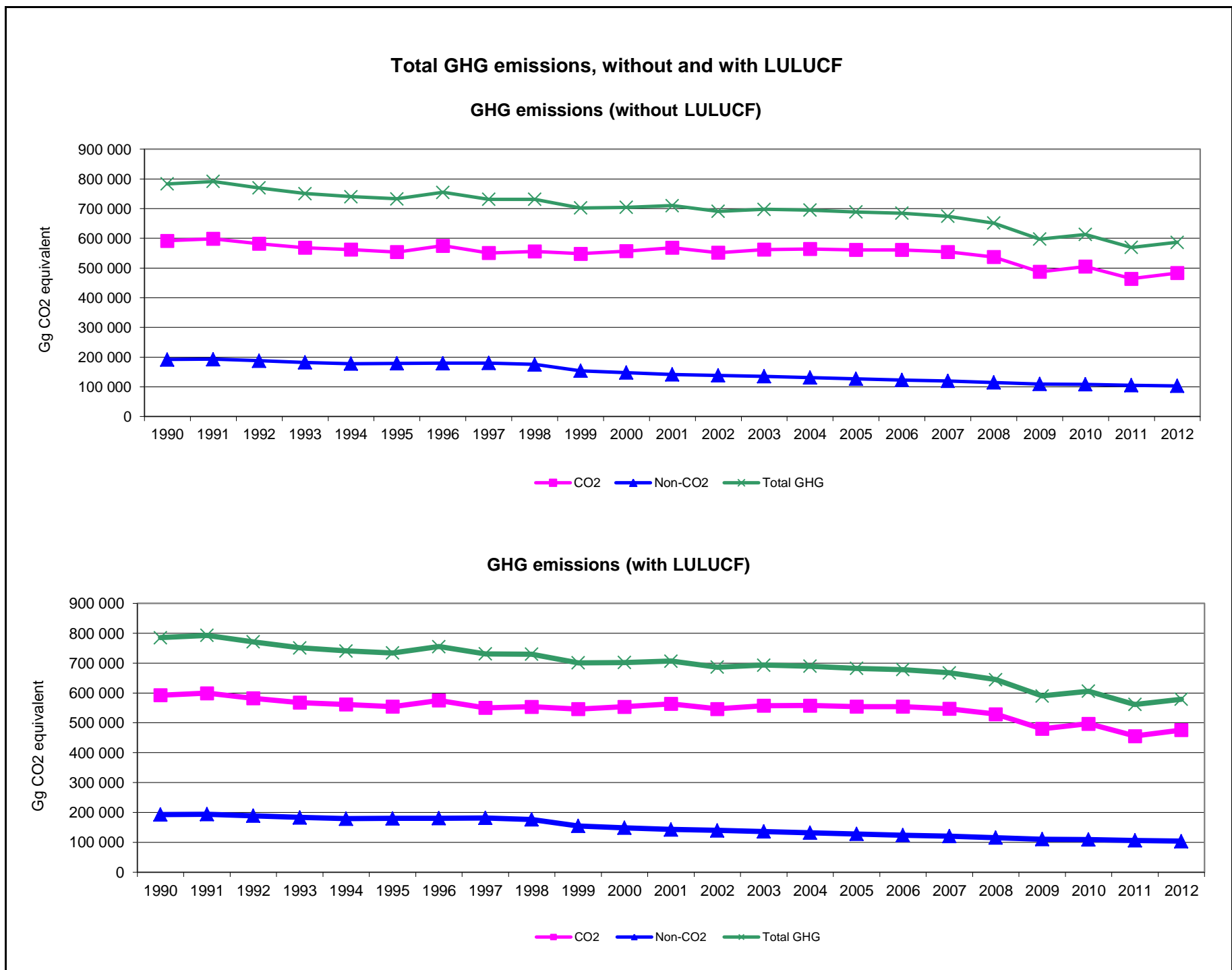
Base year (Convention) = 1990

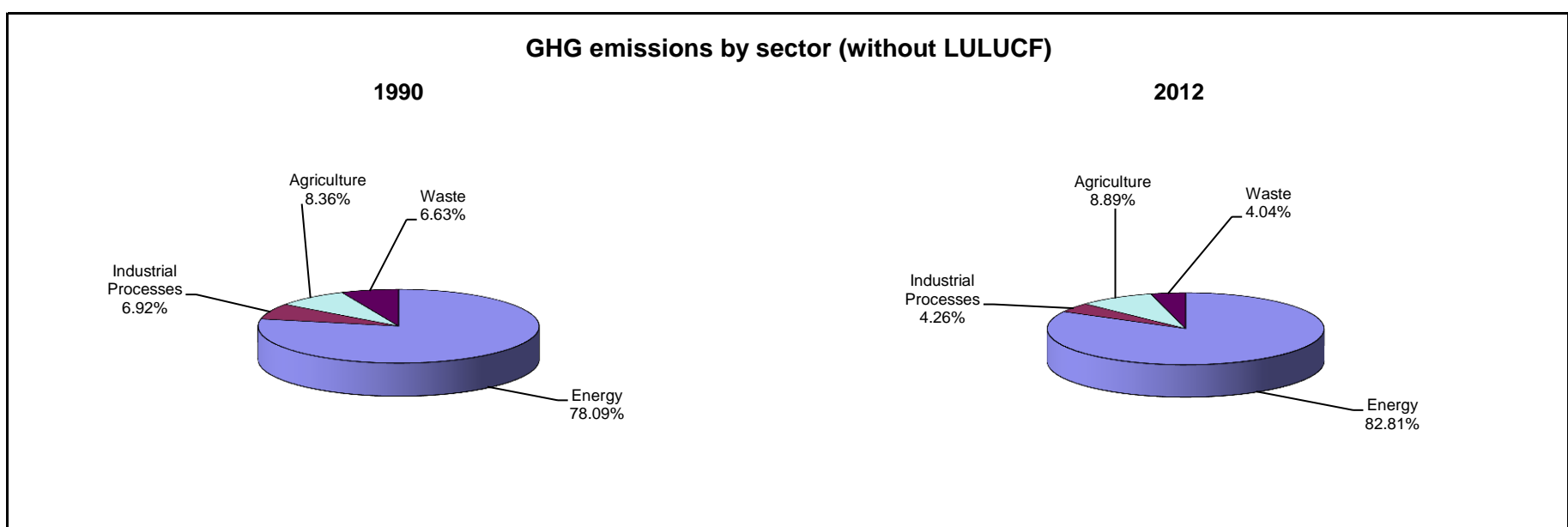
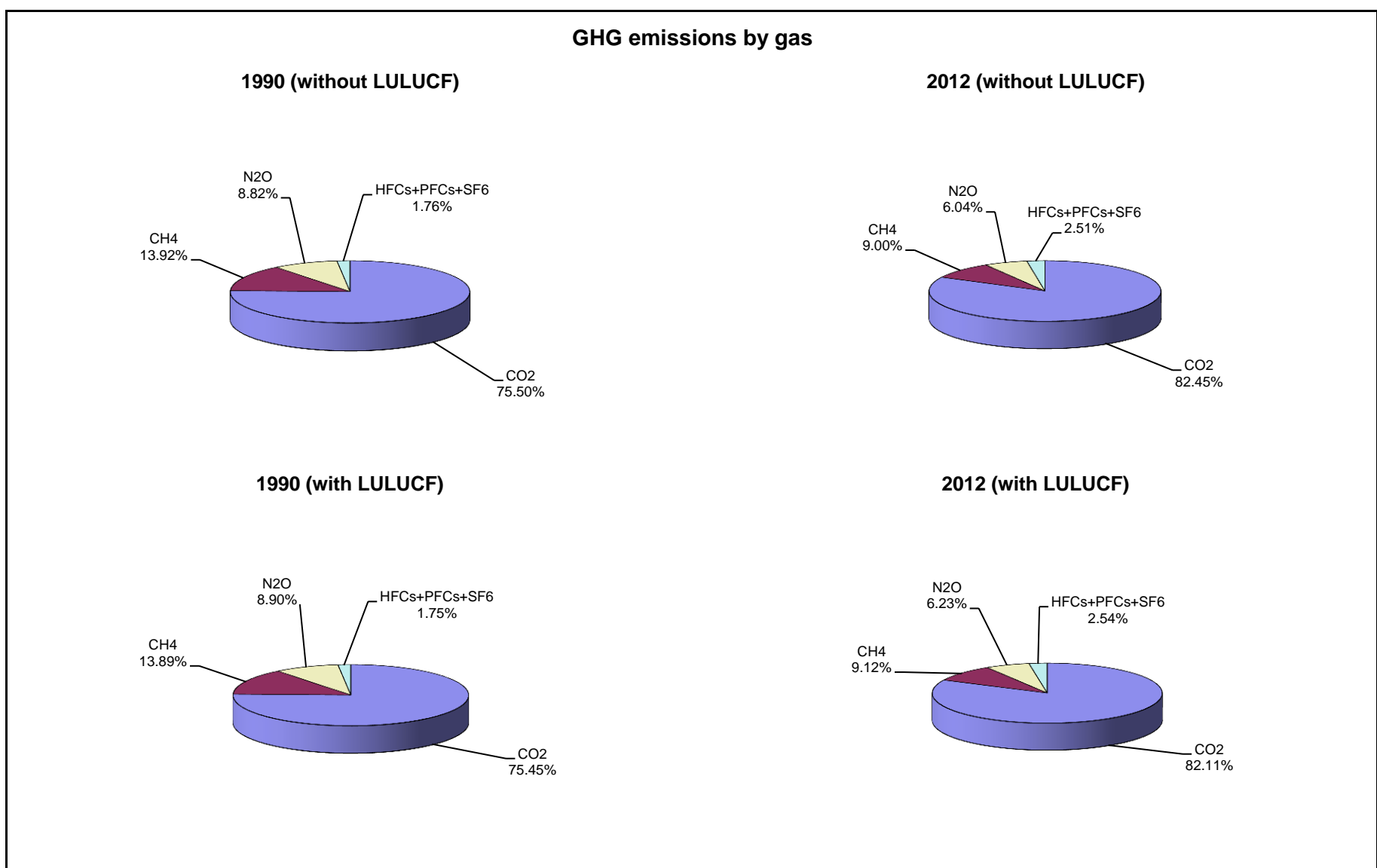
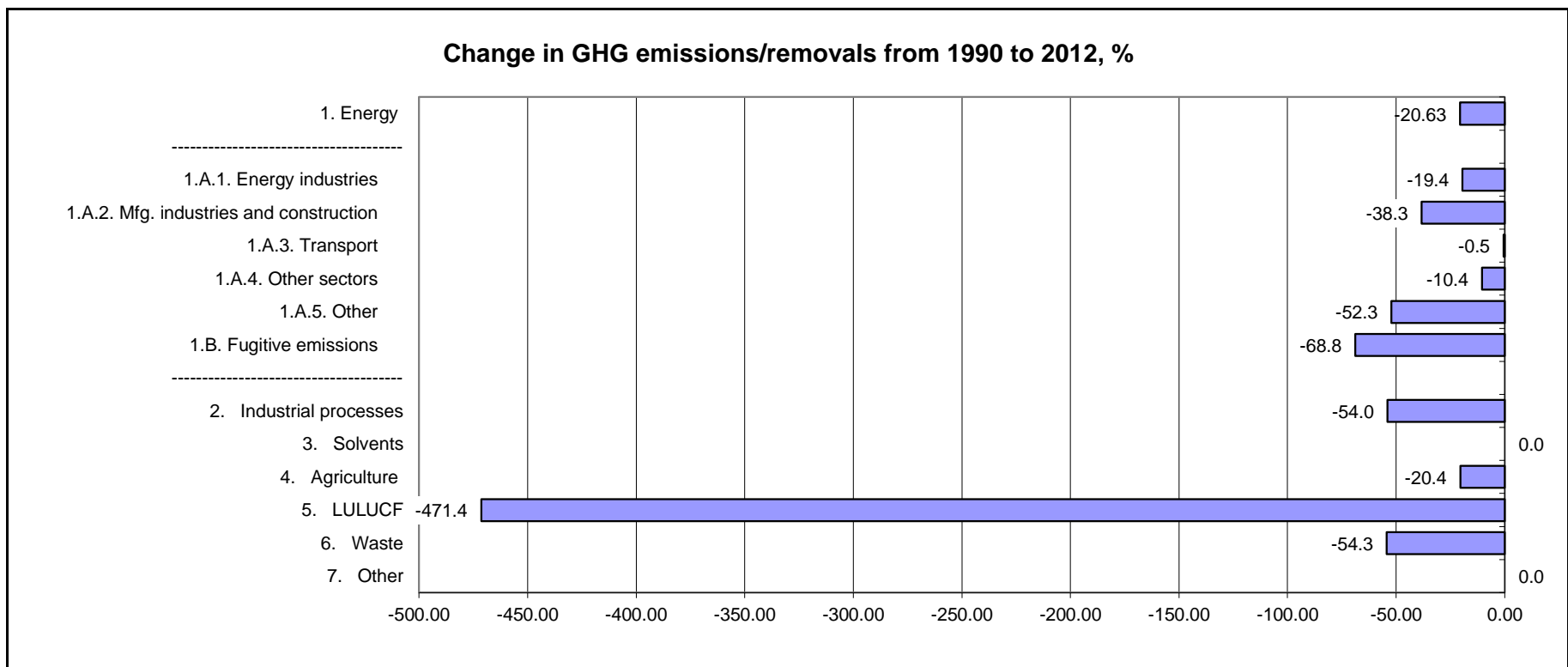
	Emissions, in Gg CO <sub>2</sub> equivalent		
	1990	2000	2012
CO <sub>2</sub> emissions without LULUCF	591 499.3	556 667.2	483 423.6
CO <sub>2</sub> net emissions/removals by LULUCF	1 015.4	-2 984.5	-7 712.0
CO <sub>2</sub> net emissions/removals with LULUCF	592 514.8	553 682.6	475 711.7
GHG emissions without LULUCF	783 412.3	704 435.3	586 357.1
GHG net emissions/removals by LULUCF	1 879.0	-2 092.7	-6 978.4
GHG net emissions/removals with LULUCF	785 291.3	702 342.7	579 378.7

	Changes in emissions, in per cent		
	From 1990 to 2000	From 2000 to 2012	From 1990 to 2012
CO <sub>2</sub> emissions without LULUCF	-5.9	-13.2	-18.3
CO <sub>2</sub> net emissions/removals by LULUCF	--	158.4	--
CO <sub>2</sub> net emissions/removals with LULUCF	-6.6	-14.1	-19.7
GHG emissions without LULUCF	-10.1	-16.8	-25.2
GHG net emissions/removals by LULUCF	--	233.5	--
GHG net emissions/removals with LULUCF	-10.6	-17.5	-26.2

	Average annual growth rates, in per cent per year		
	From 1990 to 2000	From 2000 to 2012	From 1990 to 2012
CO <sub>2</sub> emissions without LULUCF	-0.6	-1.2	-0.9
CO <sub>2</sub> net emissions/removals by LULUCF	--	8.2	--
CO <sub>2</sub> net emissions/removals with LULUCF	-0.7	-1.3	-1.0
GHG emissions without LULUCF	-1.1	-1.5	-1.3
GHG net emissions/removals by LULUCF	--	10.6	--
GHG net emissions/removals with LULUCF	-1.1	-1.6	-1.4

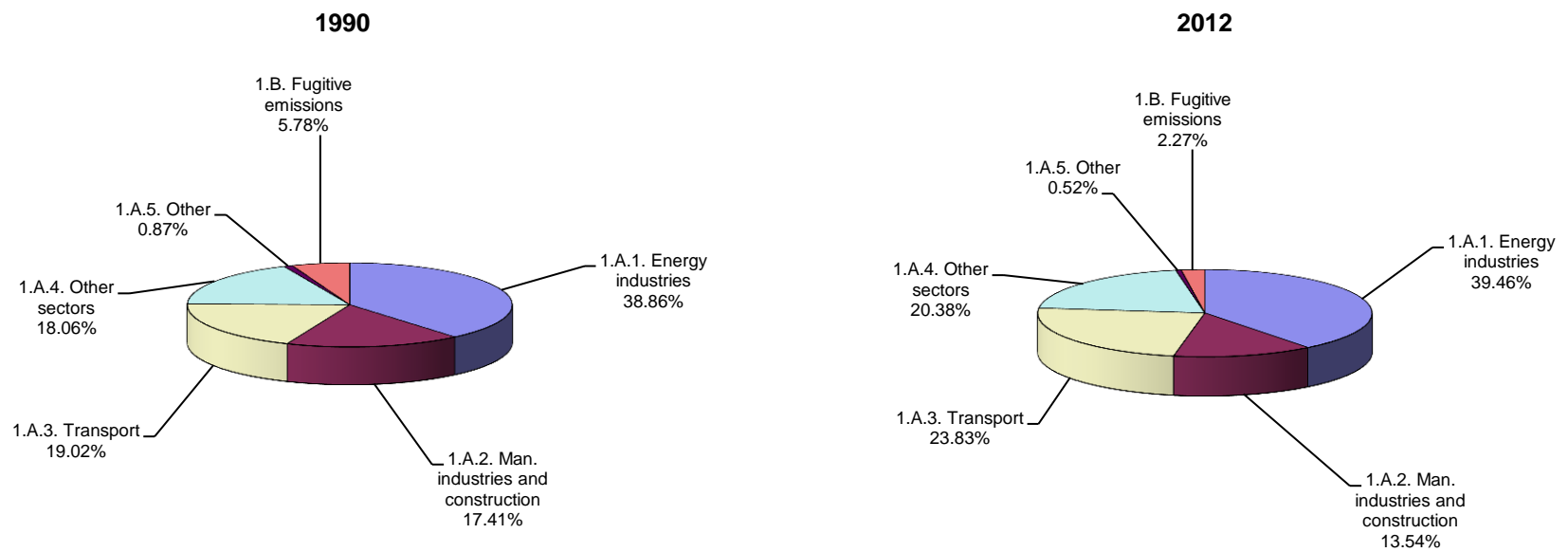
The base year under the Climate Change Convention is 1990 except for Bulgaria (1988), Hungary (average of 1985 to 1987), Poland (1988), Romania (1989) and Slovenia (1986), as defined by decisions 9/CP.2 and 11/CP.4.



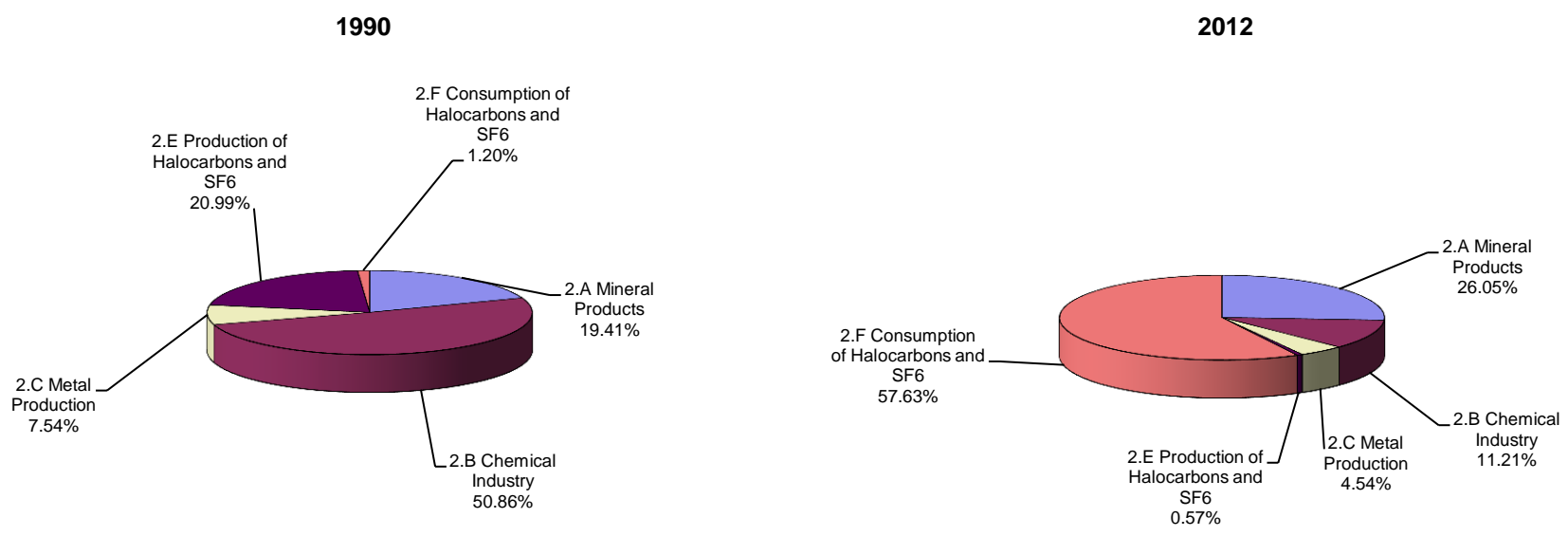




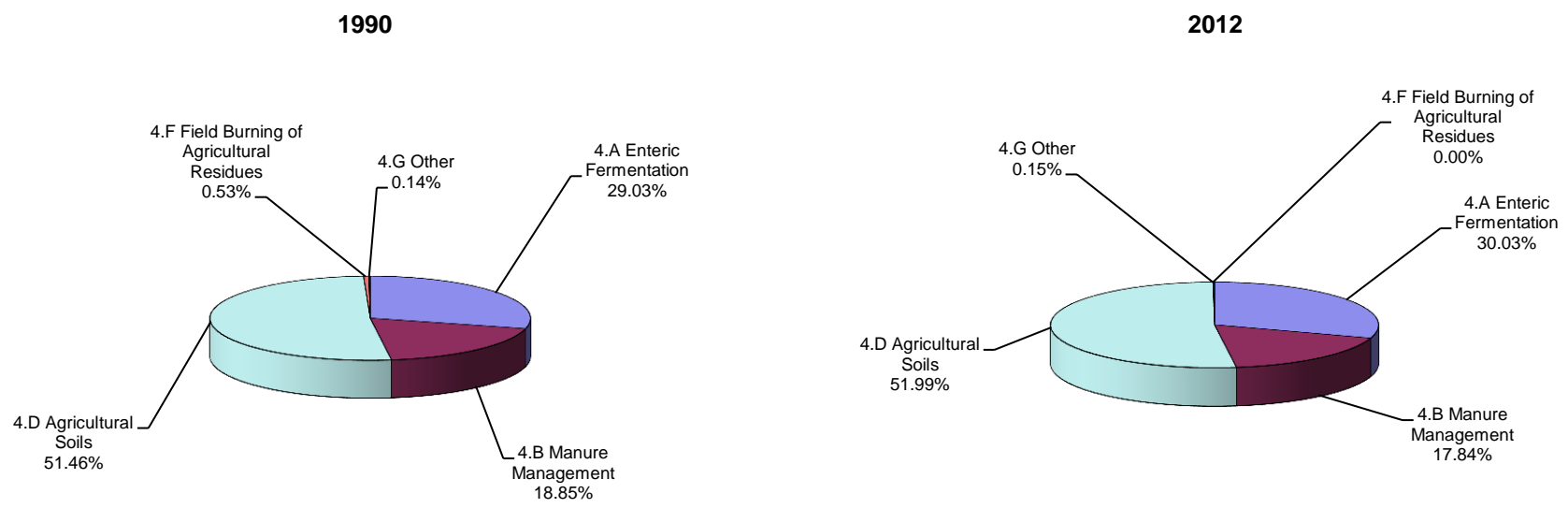
### Breakdown of GHG emissions within the energy sector



### Breakdown of GHG emissions within the industrial processes sector

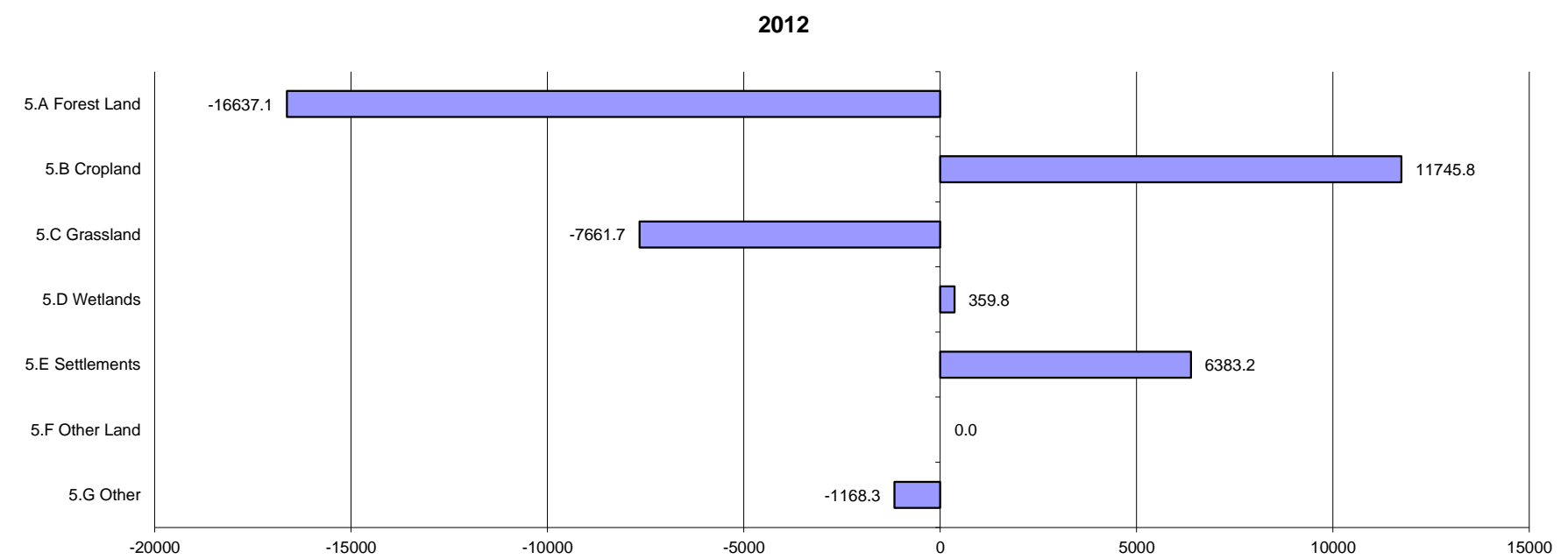
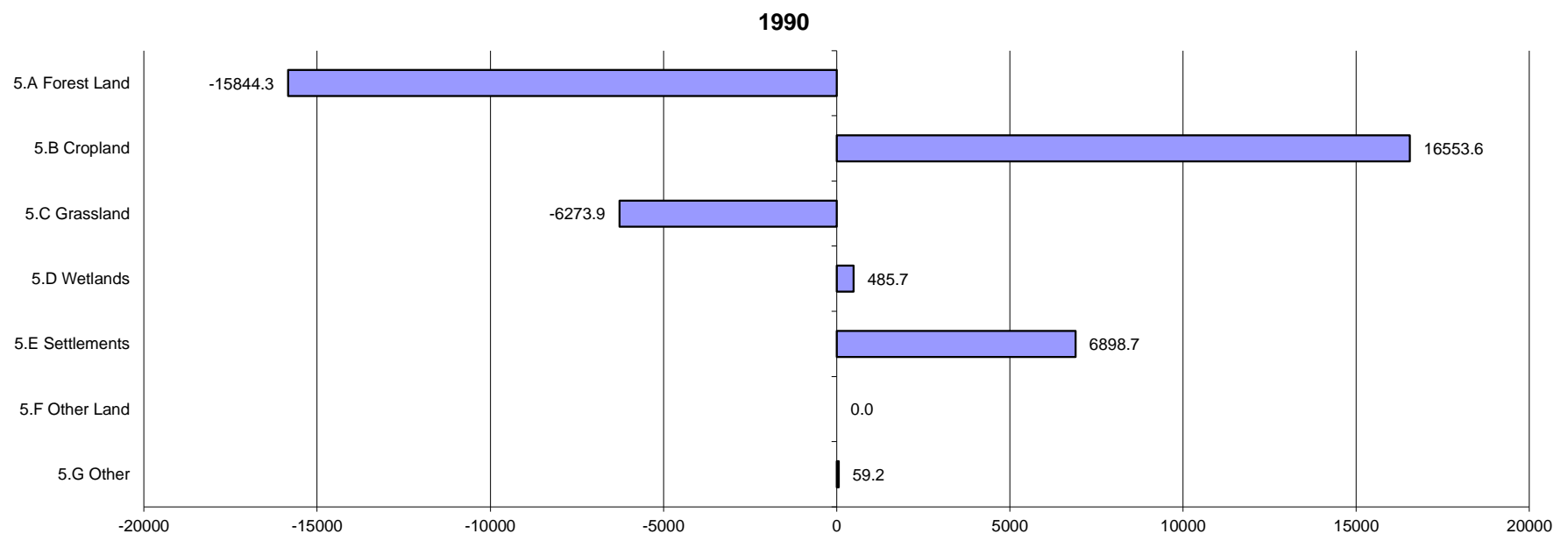


### Breakdown of GHG emissions within the agriculture sector





### Breakdown of GHG emissions/removals within the LULUCF sector, (Gg CO<sub>2</sub> equivalent)



### Breakdown of GHG emissions within the waste sector

