



## Summary of GHG Emissions for Czech Republic

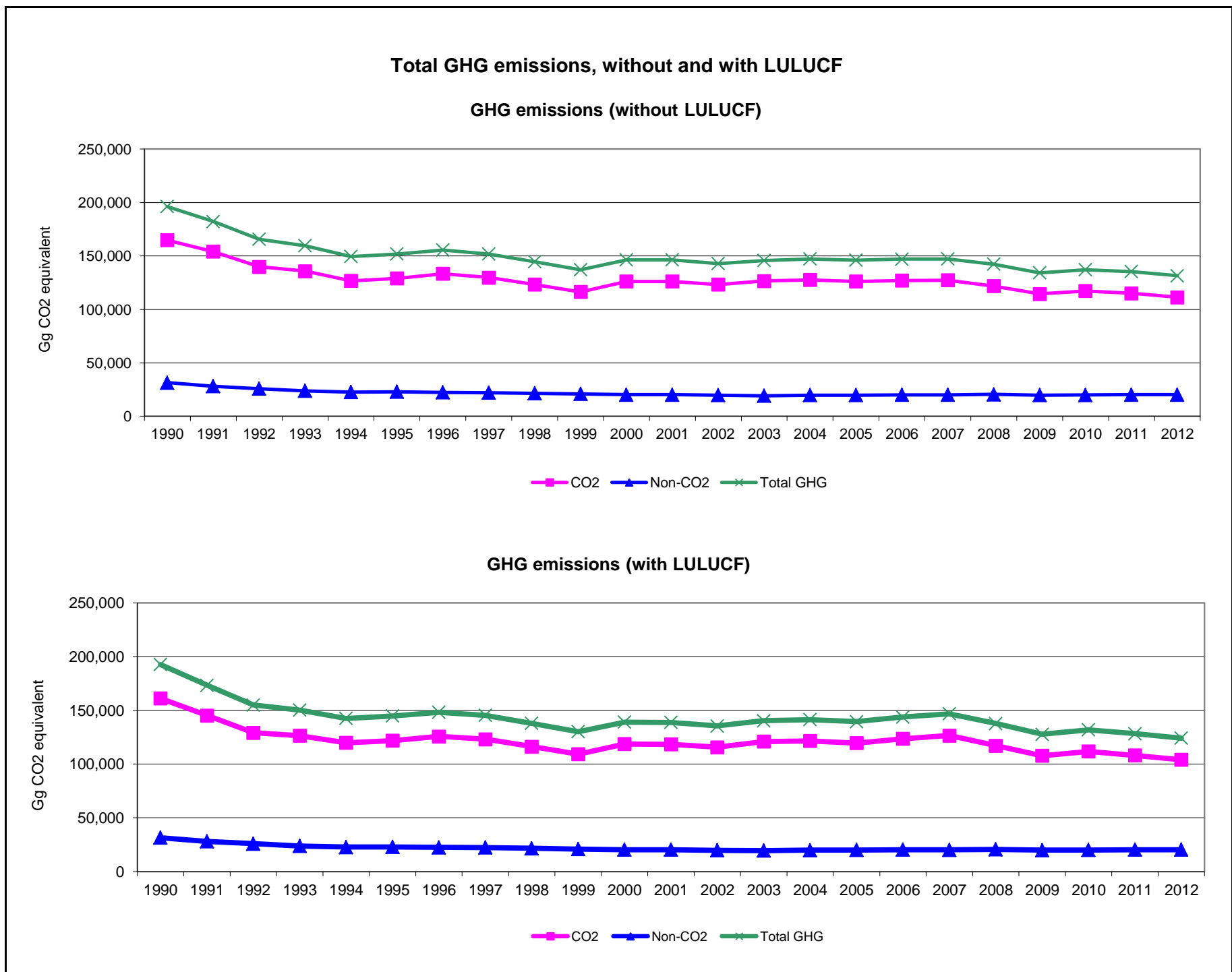
Base year (Convention) = 1990

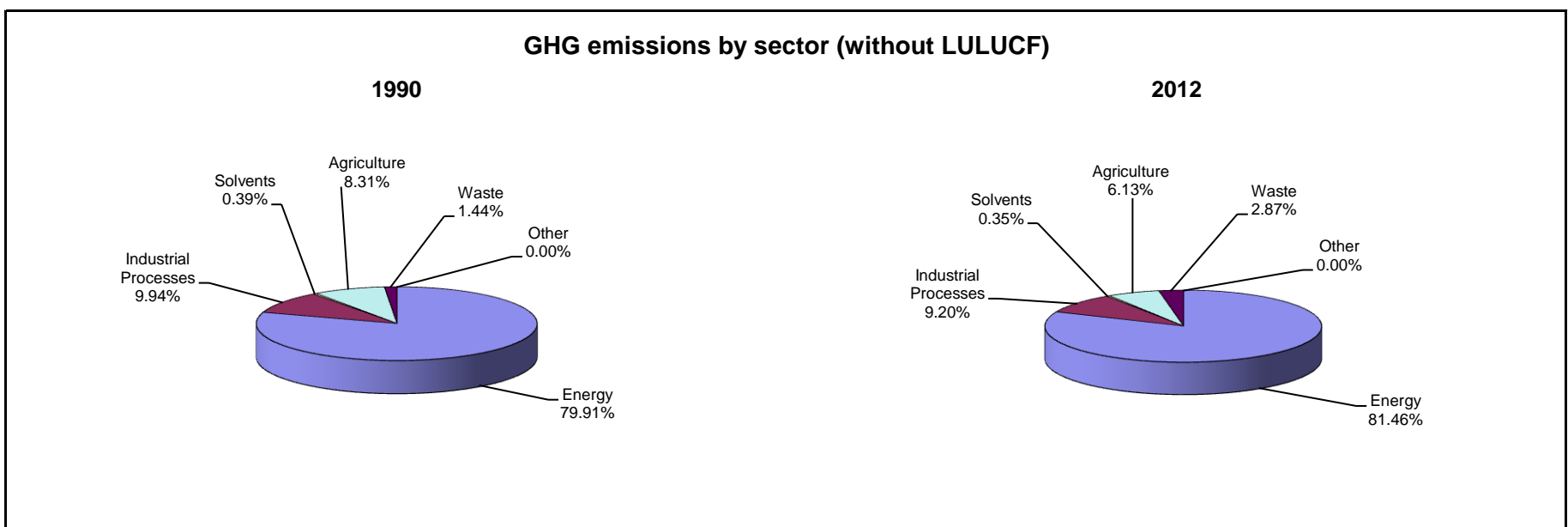
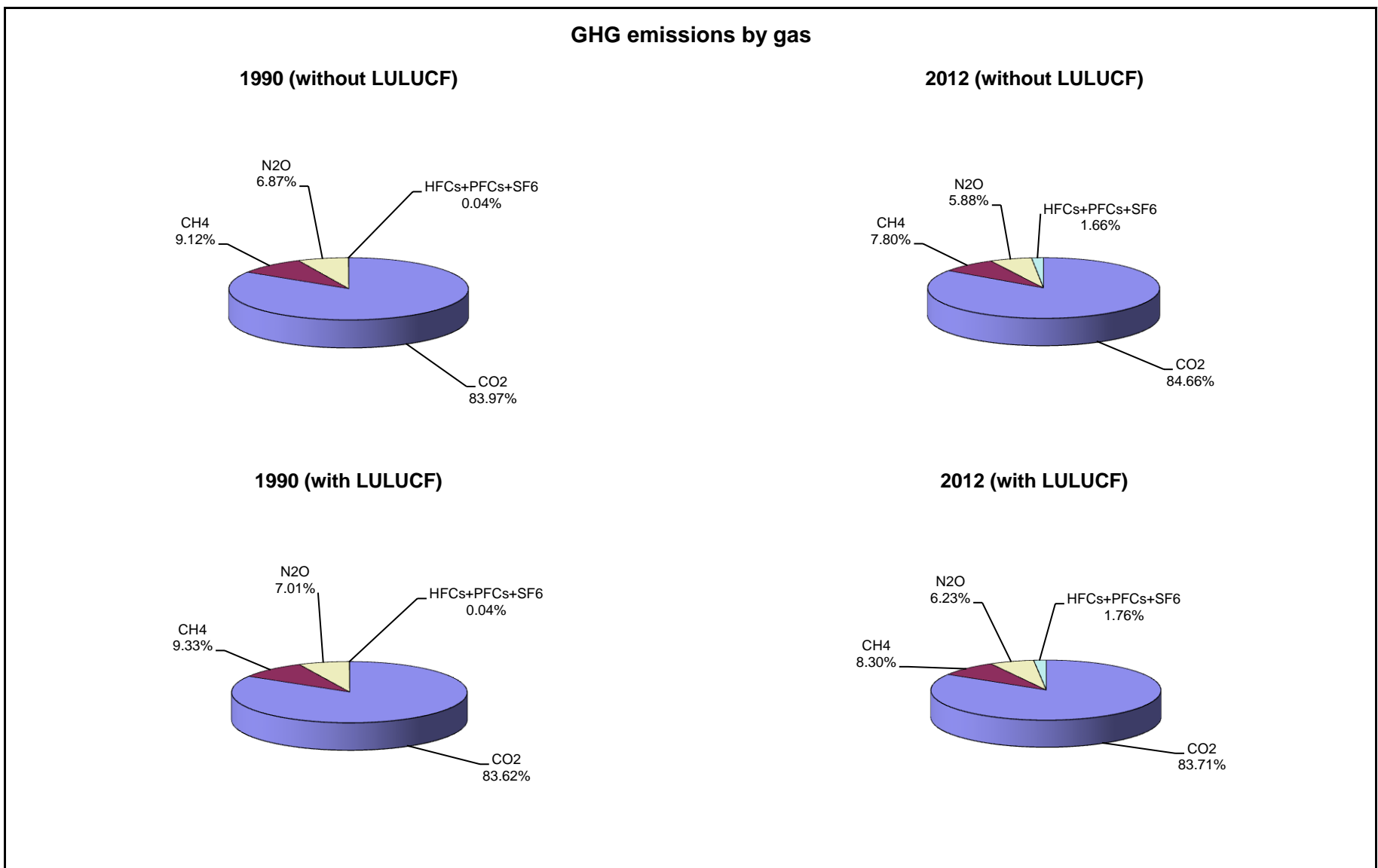
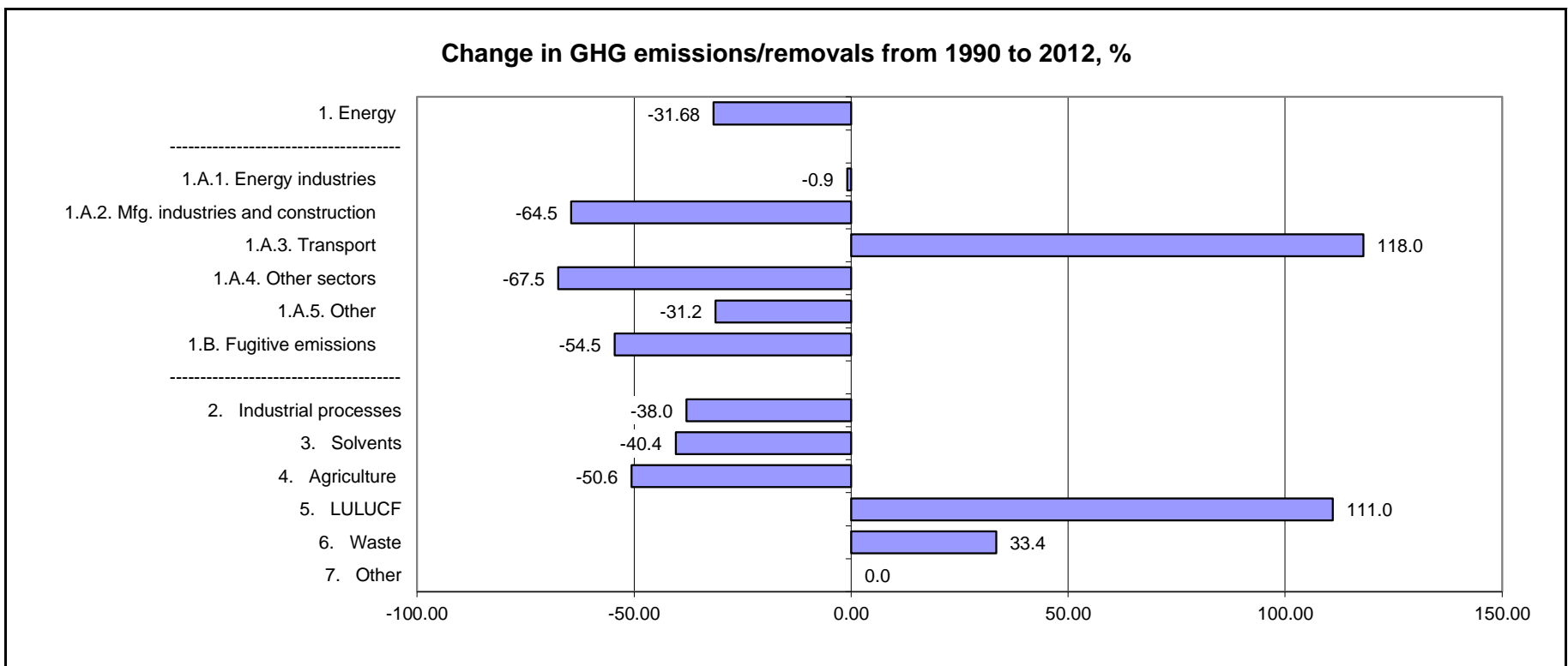
	Emissions, in Gg CO <sub>2</sub> equivalent		
	1990	2000	2012
CO <sub>2</sub> emissions without LULUCF	164,694.2	126,129.8	111,301.9
CO <sub>2</sub> net emissions/removals by LULUCF	-3,554.7	-7,384.6	-7,322.9
CO <sub>2</sub> net emissions/removals with LULUCF	161,139.5	118,745.2	103,979.0
GHG emissions without LULUCF	196,145.7	146,330.2	131,466.0
GHG net emissions/removals by LULUCF	-3,437.5	-7,279.9	-7,252.0
GHG net emissions/removals with LULUCF	192,708.2	139,050.2	124,214.1

	Changes in emissions, in per cent		
	From 1990 to 2000	From 2000 to 2012	From 1990 to 2012
CO <sub>2</sub> emissions without LULUCF	-23.4	-11.8	-32.4
CO <sub>2</sub> net emissions/removals by LULUCF	107.7	-0.8	106.0
CO <sub>2</sub> net emissions/removals with LULUCF	-26.3	-12.4	-35.5
GHG emissions without LULUCF	-25.4	-10.2	-33.0
GHG net emissions/removals by LULUCF	111.8	-0.4	111.0
GHG net emissions/removals with LULUCF	-27.8	-10.7	-35.5

	Average annual growth rates, in per cent per year		
	From 1990 to 2000	From 2000 to 2012	From 1990 to 2012
CO <sub>2</sub> emissions without LULUCF	-2.6	-1.0	-1.8
CO <sub>2</sub> net emissions/removals by LULUCF	7.6	-0.1	3.3
CO <sub>2</sub> net emissions/removals with LULUCF	-3.0	-1.1	-2.0
GHG emissions without LULUCF	-2.9	-0.9	-1.8
GHG net emissions/removals by LULUCF	7.8	0.0	3.5
GHG net emissions/removals with LULUCF	-3.2	-0.9	-2.0

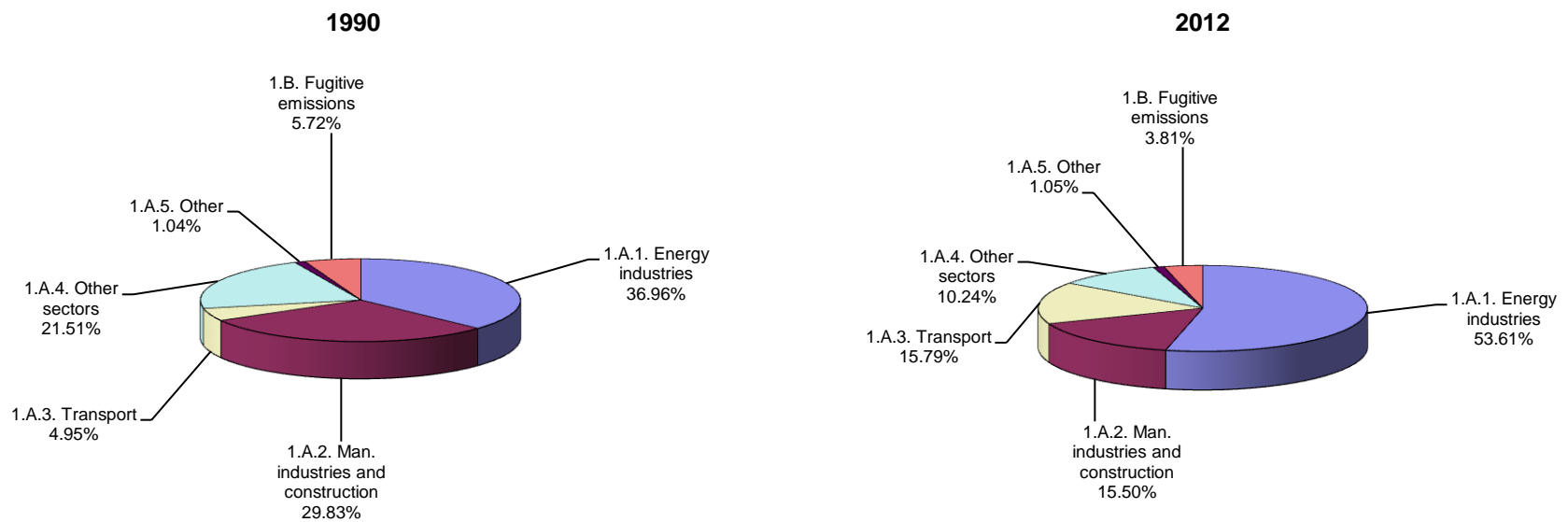
The base year under the Climate Change Convention is 1990 except for Bulgaria (1988), Hungary (average of 1985 to 1987), Poland (1988), Romania (1989) and Slovenia (1986), as defined by decisions 9/CP.2 and 11/CP.4.



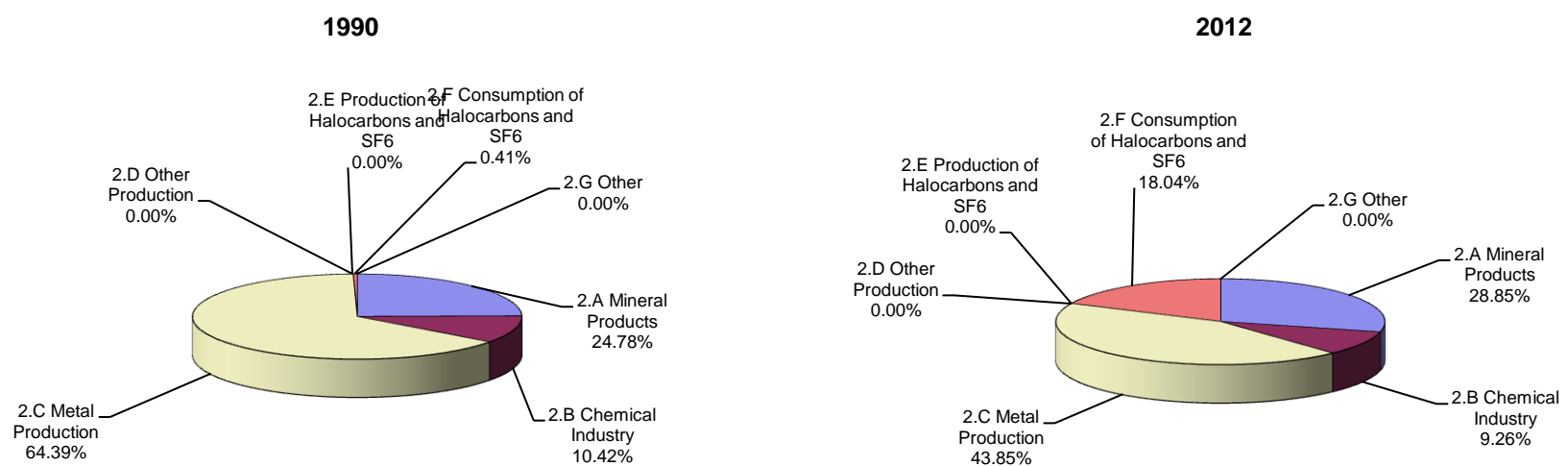




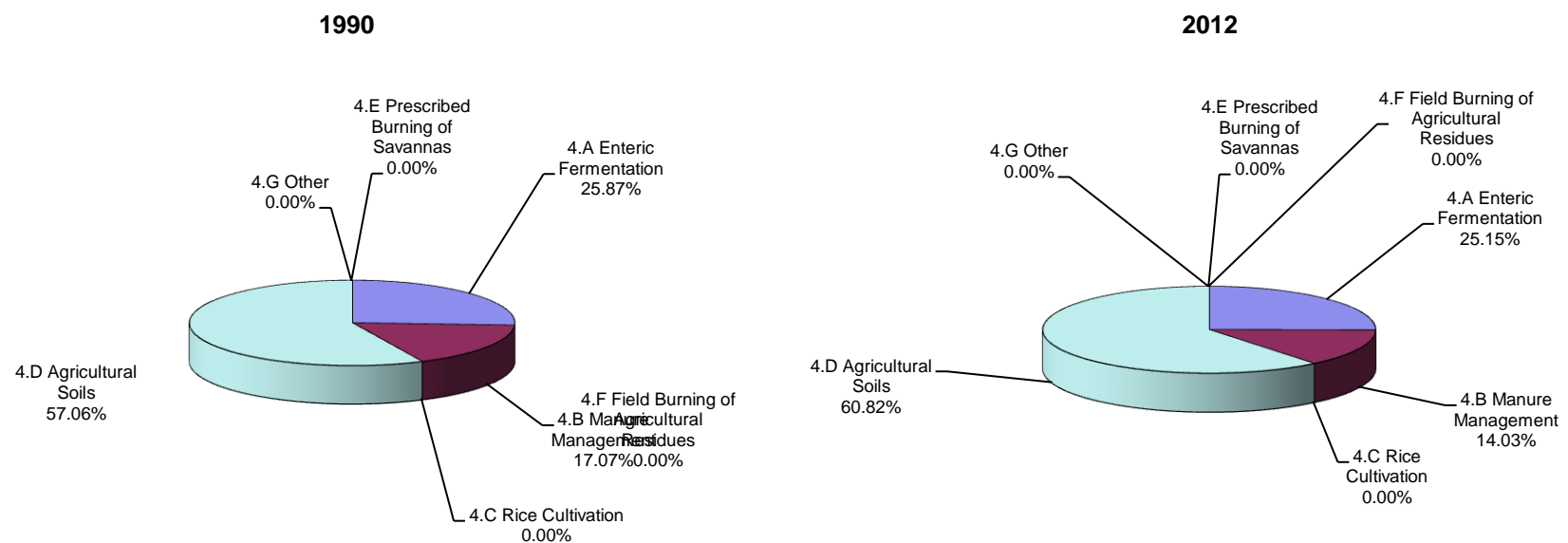
### Breakdown of GHG emissions within the energy sector



### Breakdown of GHG emissions within the industrial processes sector

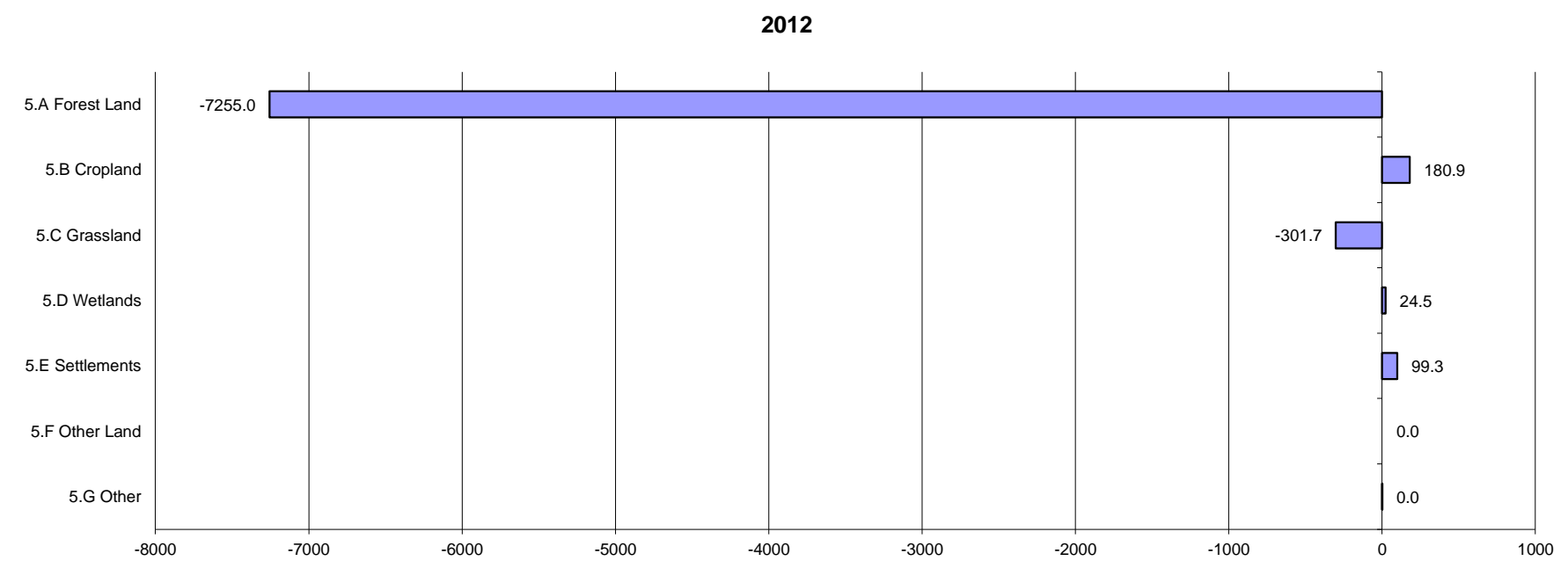
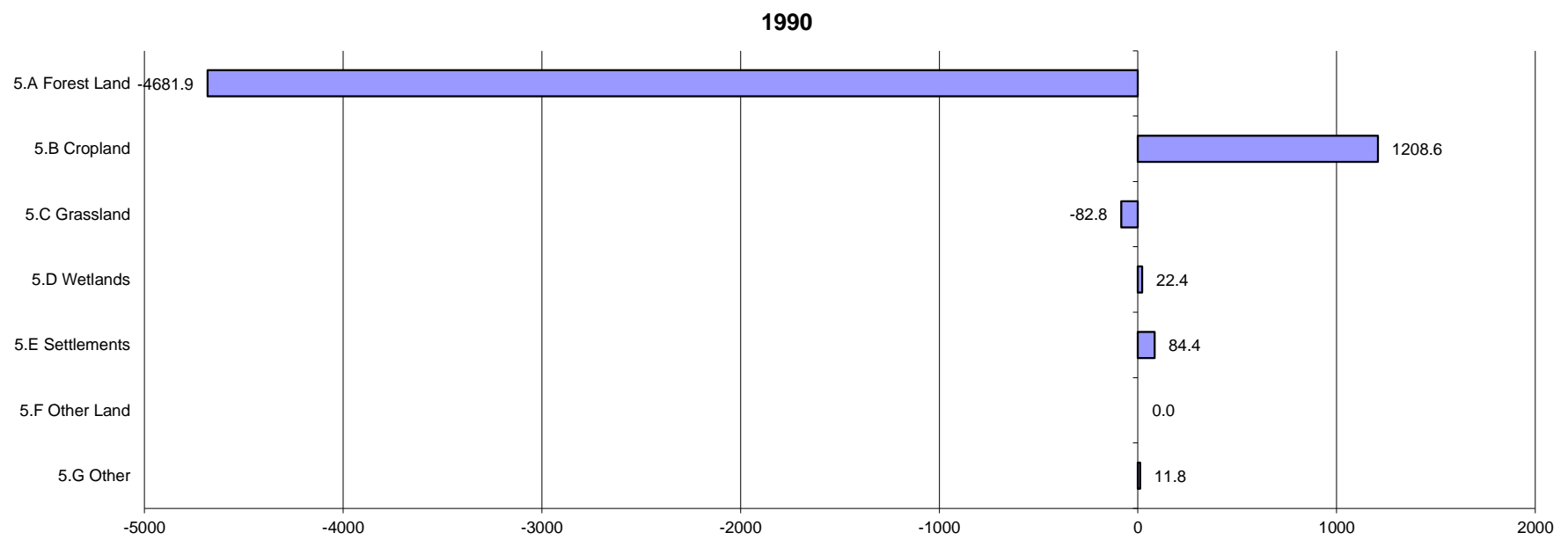


### Breakdown of GHG emissions within the agriculture sector





### Breakdown of GHG emissions/removals within the LULUCF sector, (Gg CO<sub>2</sub> equivalent)



### Breakdown of GHG emissions within the waste sector

