



## Summary of GHG Emissions for Bulgaria

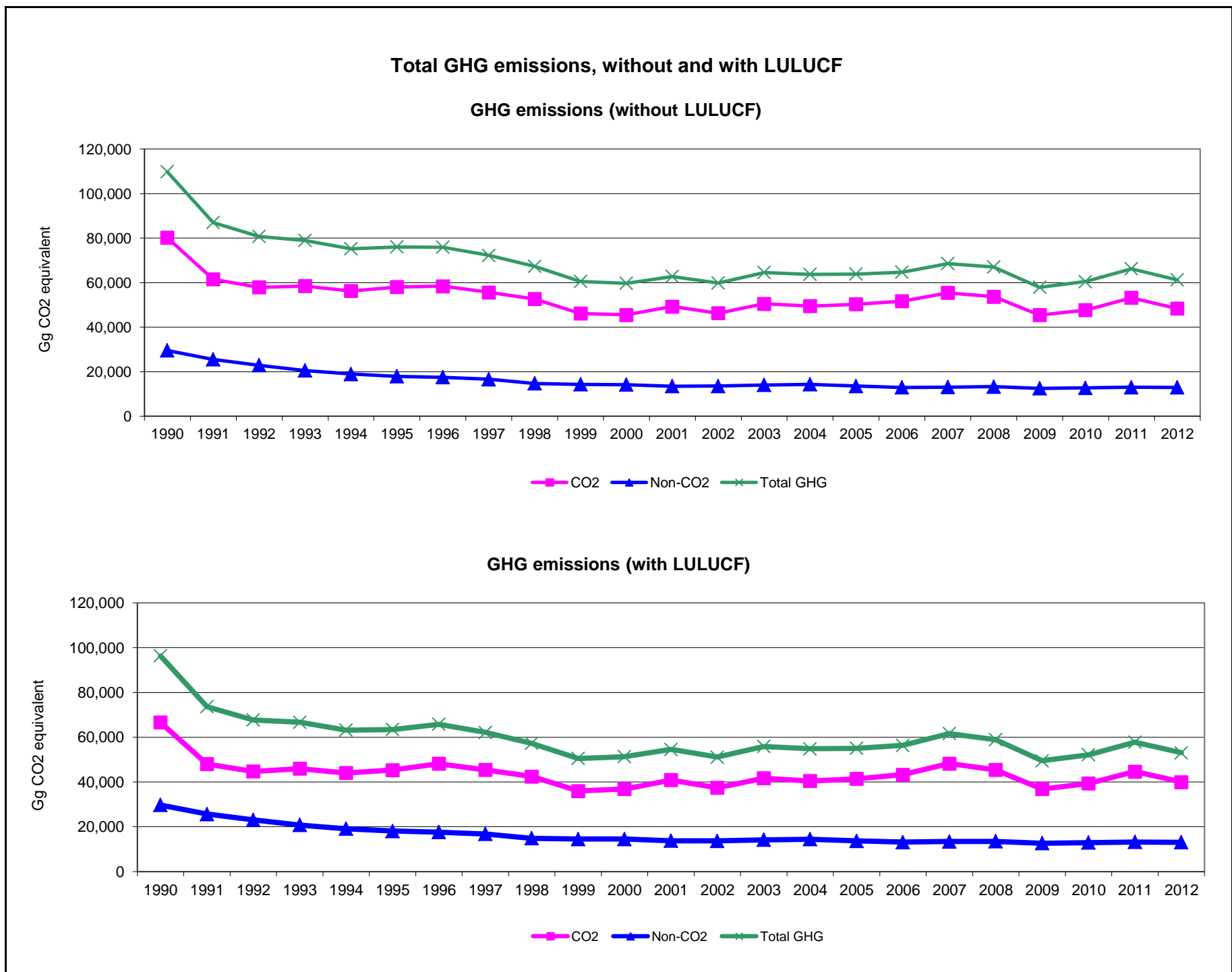
Base year (Convention) = 1988

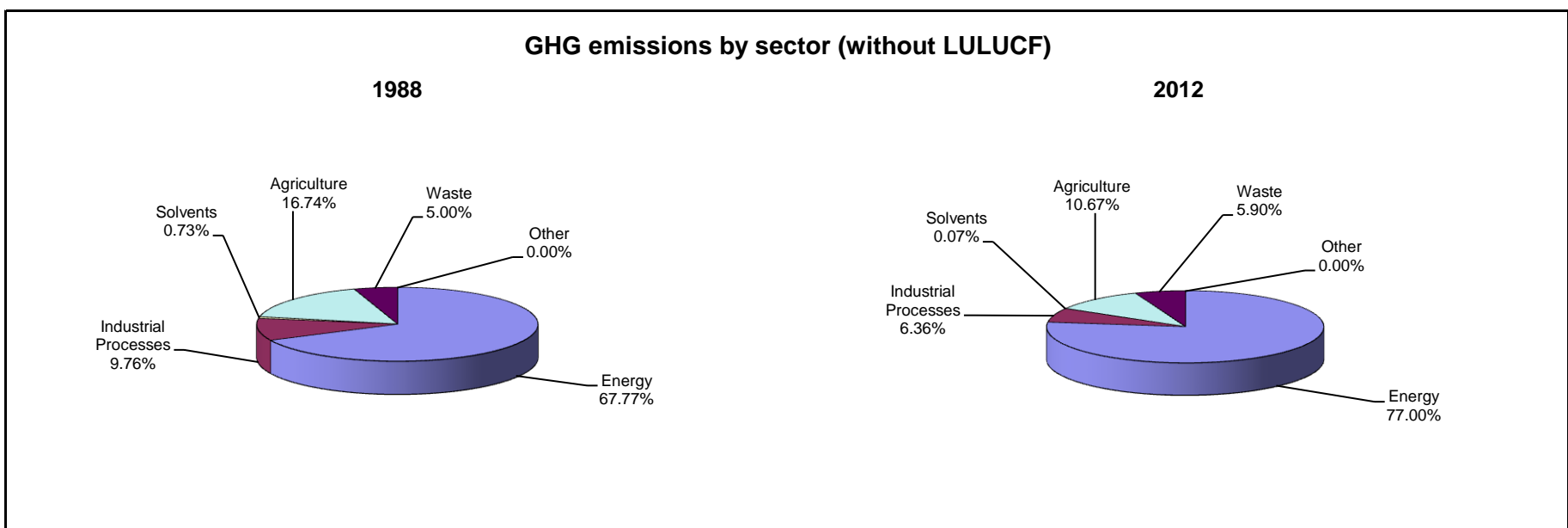
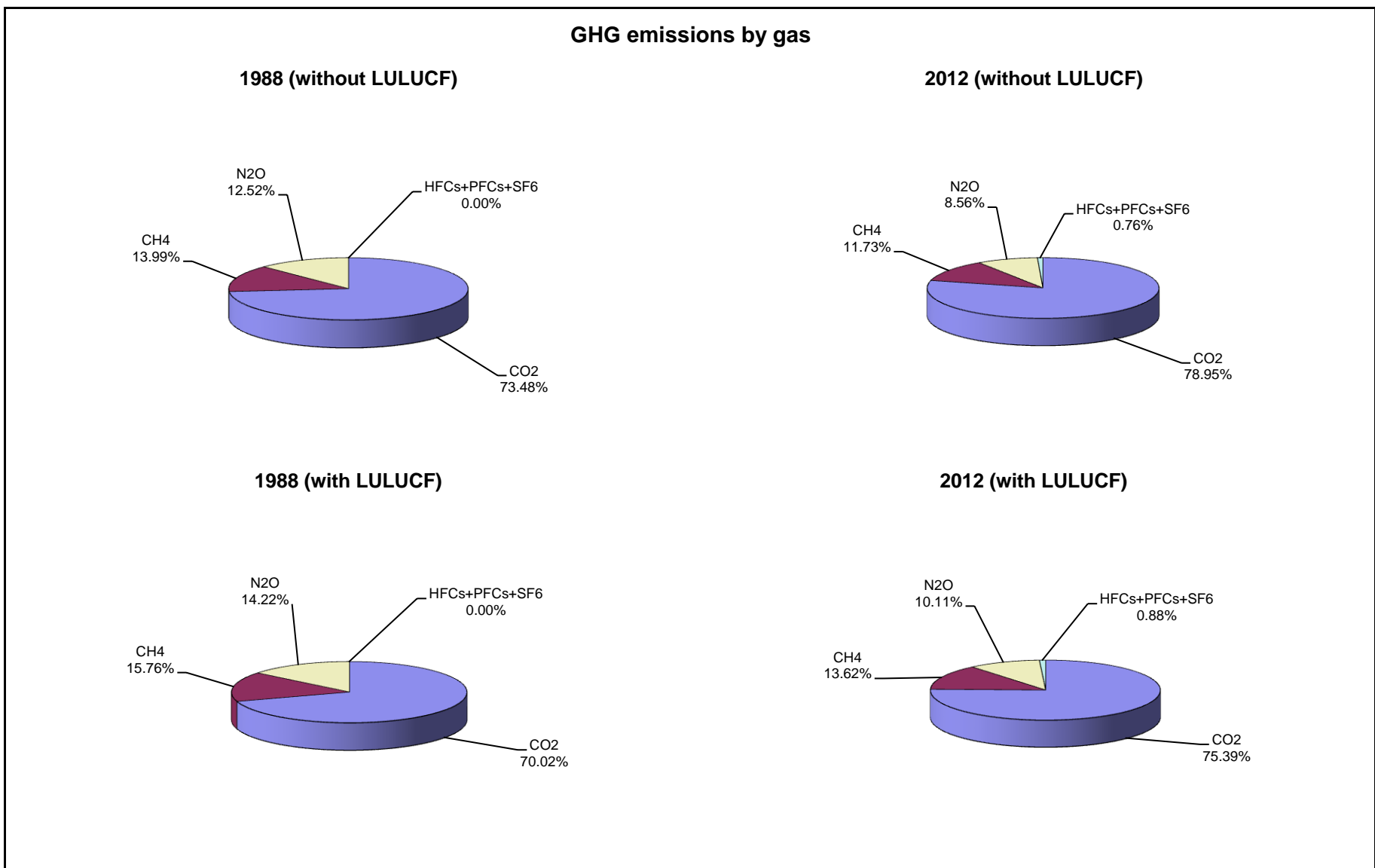
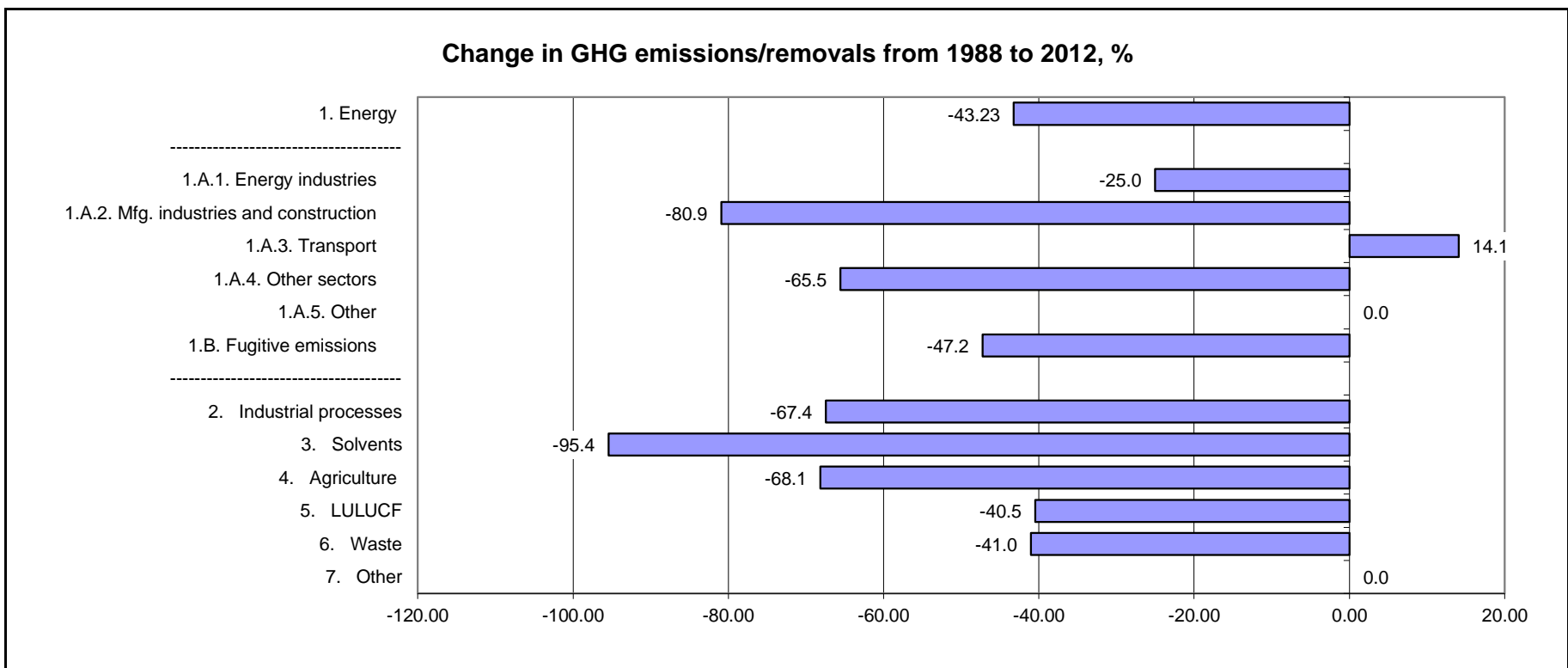
	Emissions, in Gg CO <sub>2</sub> equivalent		
	1988	2000	2012
CO <sub>2</sub> emissions without LULUCF	90,092.3	45,522.8	48,363.9
CO <sub>2</sub> net emissions/removals by LULUCF	-13,905.3	-8,663.2	-8,370.8
CO <sub>2</sub> net emissions/removals with LULUCF	76,186.9	36,859.6	39,993.2
GHG emissions without LULUCF	122,601.6	59,666.9	61,259.1
GHG net emissions/removals by LULUCF	-13,787.7	-8,337.2	-8,207.5
GHG net emissions/removals with LULUCF	108,813.9	51,329.7	53,051.6

	Changes in emissions, in per cent		
	From 1988 to 2000	From 2000 to 2012	From 1988 to 2012
CO <sub>2</sub> emissions without LULUCF	-49.5	6.2	-46.3
CO <sub>2</sub> net emissions/removals by LULUCF	-37.7	-3.4	-39.8
CO <sub>2</sub> net emissions/removals with LULUCF	-51.6	8.5	-47.5
GHG emissions without LULUCF	-51.3	2.7	-50.0
GHG net emissions/removals by LULUCF	-39.5	-1.6	-40.5
GHG net emissions/removals with LULUCF	-52.8	3.4	-51.2

	Average annual growth rates, in per cent per year		
	From 1988 to 2000	From 2000 to 2012	From 1988 to 2012
CO <sub>2</sub> emissions without LULUCF	-5.5	0.5	-2.6
CO <sub>2</sub> net emissions/removals by LULUCF	-3.9	-0.3	-2.1
CO <sub>2</sub> net emissions/removals with LULUCF	-5.9	0.7	-2.6
GHG emissions without LULUCF	-5.8	0.2	-2.8
GHG net emissions/removals by LULUCF	-4.1	-0.1	-2.1
GHG net emissions/removals with LULUCF	-6.1	0.3	-2.9

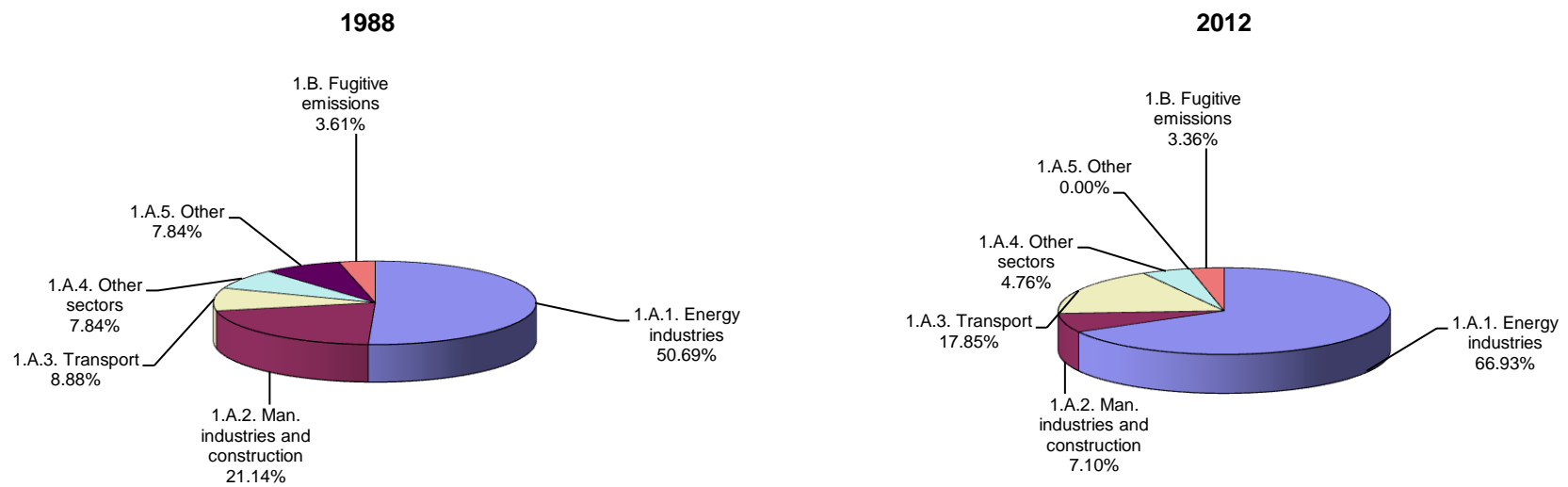
The base year under the Climate Change Convention is 1990 except for Bulgaria (1988), Hungary (average of 1985 to 1987), Poland (1988), Romania (1989) and Slovenia (1986), as defined by decisions 9/CP.2 and 11/CP.4.



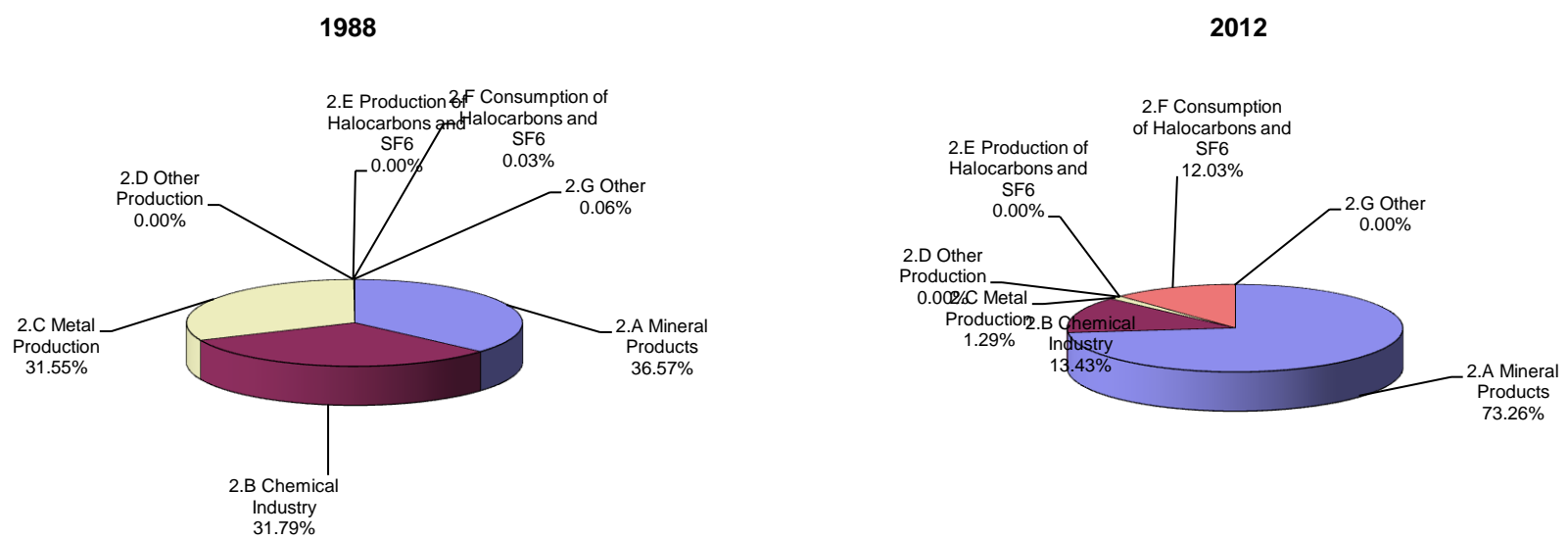




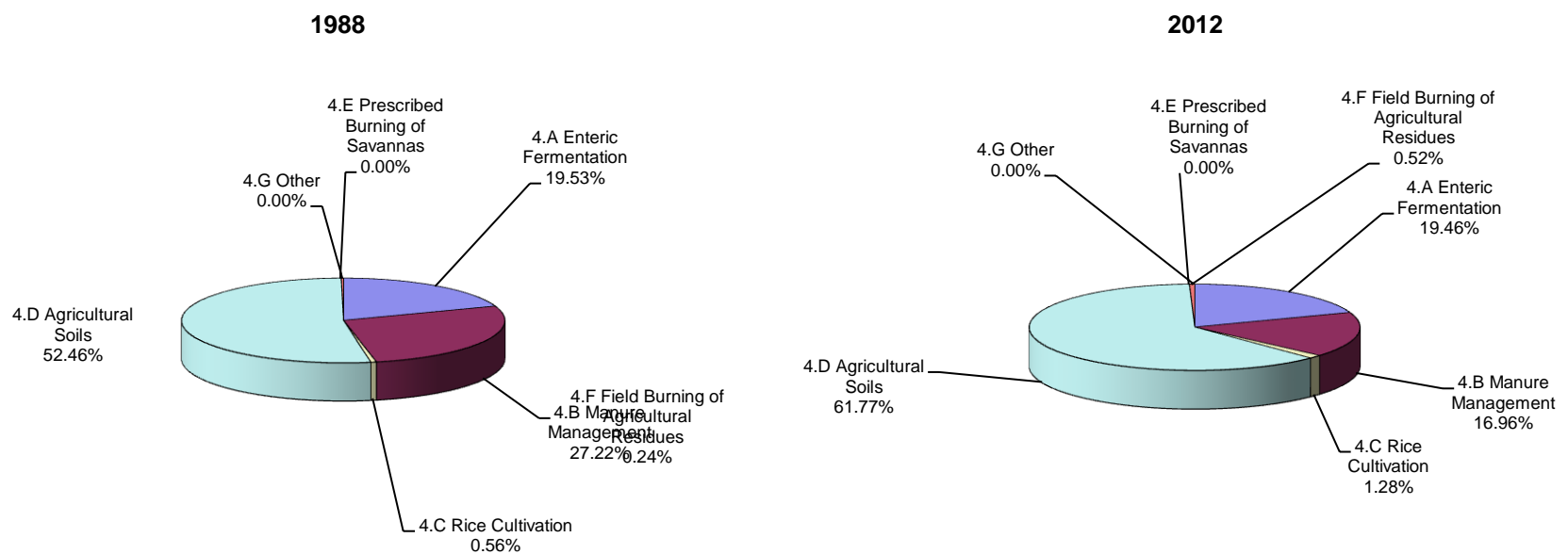
### Breakdown of GHG emissions within the energy sector



### Breakdown of GHG emissions within the industrial processes sector

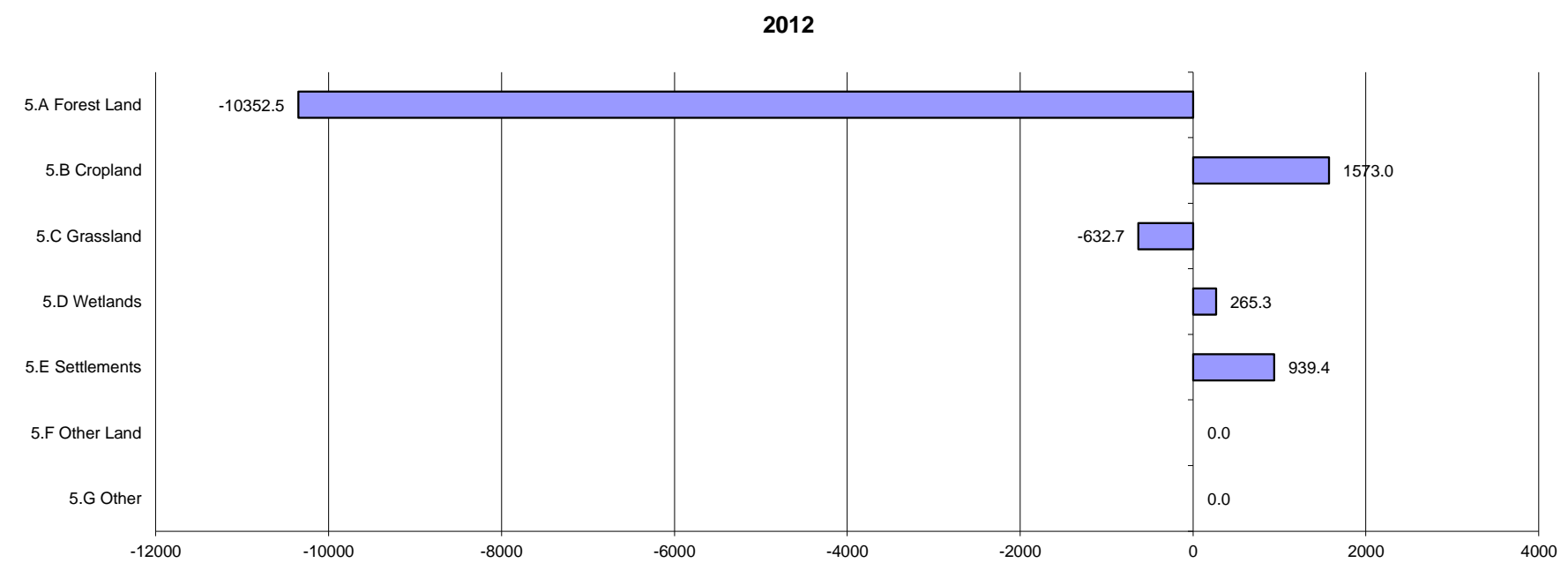
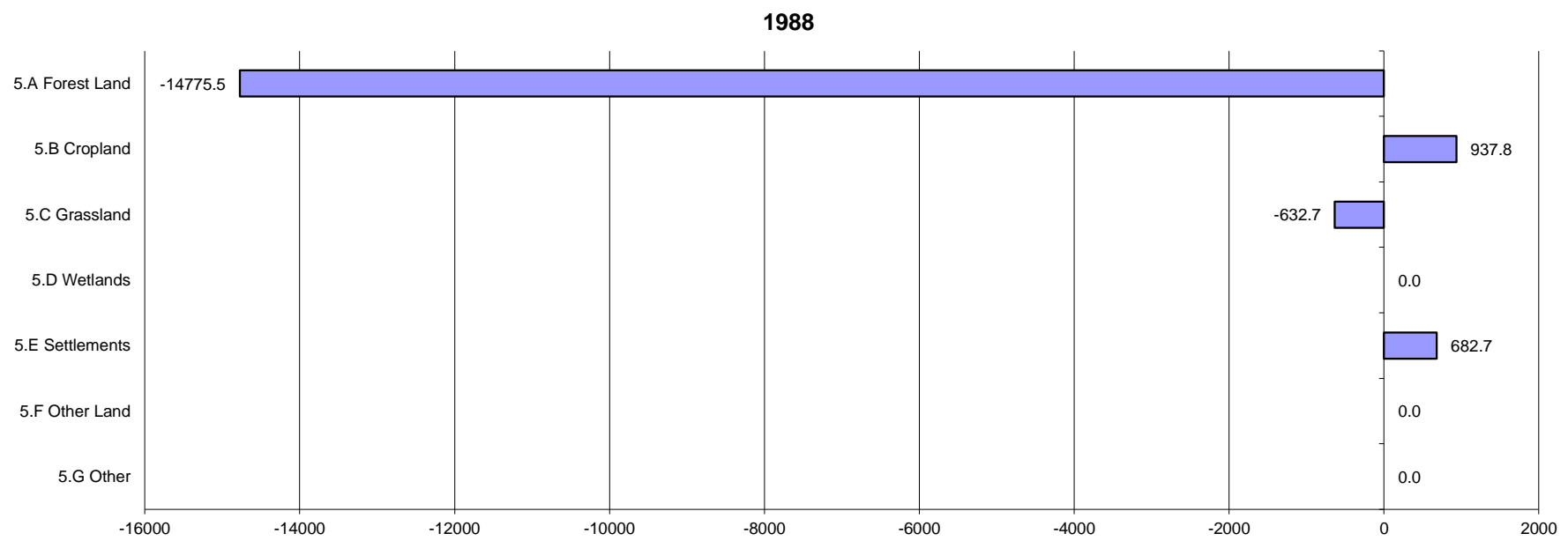


### Breakdown of GHG emissions within the agriculture sector





### Breakdown of GHG emissions/removals within the LULUCF sector, (Gg CO<sub>2</sub> equivalent)



### Breakdown of GHG emissions within the waste sector

