

Photo © Seoul Metropolitan Government



Vertical integration and the Transformative Actions Program (TAP)

Joint UN Environment – UNFCCC Workshop
Mitigation in the building sector, *1 August 2017*

*Maryke van Staden, ICLEI - Local Governments for Sustainability,
World Secretariat, Bonn – maryke.van.staden@iclei.org*

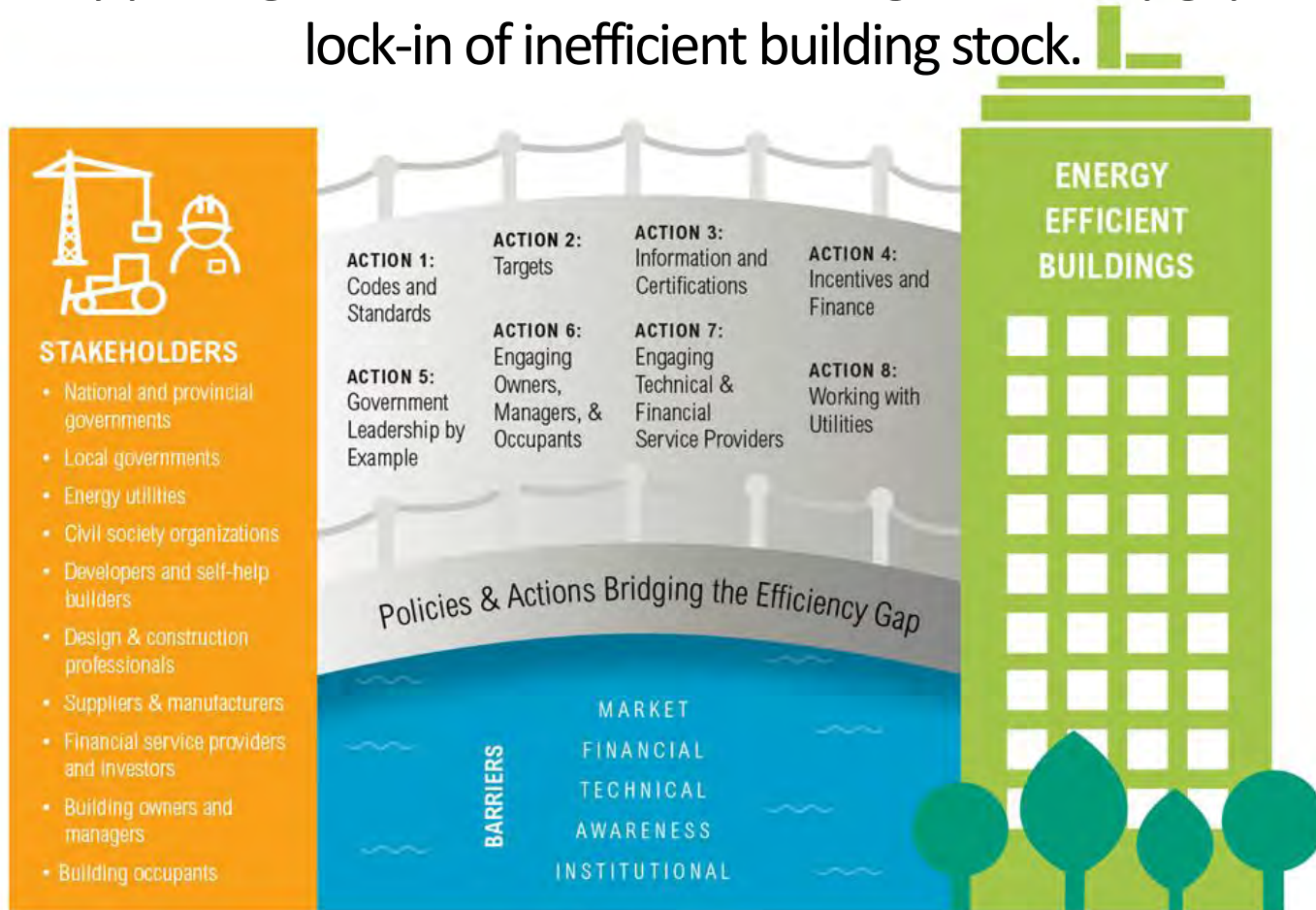
Contents

- Brief introduction of the Building Efficiency Accelerator (BEA) – a sectoral approach
- Vertical integration of climate and energy – an in-country coordination and synergy function
- Transformative Actions Program (TAP) – a global program to access finance for projects identified as priority by local and subnational governments



Acceleration of building efficiency policy efforts

New partnerships enable implementation of ambitious projects and policy packages to address barriers, bridge efficiency gap, and avoid lock-in of inefficient building stock.



Source: World Resources Institute (2016)



Building Efficiency Accelerator (BEA) partnership

Coordinating partner:



WORLD RESOURCES INSTITUTE

WRI ROSS CENTER FOR SUSTAINABLE CITIES

NGOs / Associations / Multilaterals:



WORLD GREEN BUILDING COUNCIL



World Business Council for Sustainable Development



International Energy Agency



International Finance Corporation WORLD BANK GROUP



Service Providers / Companies:



What do local governments sign up to?

Overarching commitment:

double the rate of building energy efficiency by 2030 in targeted sector within the jurisdiction

Implement one
enabling **policy**

Policy

Implement one
demonstration **project**

Project

Create a baseline, **track and report** annual progress, and **share experiences** with other governments

Tracking & communication

What does the BEA provide?

**Local action
prioritization process**



Collaborative, multi-stakeholder assessments and workshops to define and prioritize policies and projects

**Tools, expertise and
solutions**



Technical support through trainings, tools. Access to network of subject matter experts and service providers.

Funding opportunities



Connect projects in need to financial partners who can provide funding to efficiency actions

**International
recognition and
collaboration**



Recognition of efficiency actions at international events. Knowledge sharing through network of peers.

Solutions Gateway

Low Carbon Solutions for Urban Development Challenges



Online platform for Local Governments

www.solutions-gateway.org

Managed by ICLEI

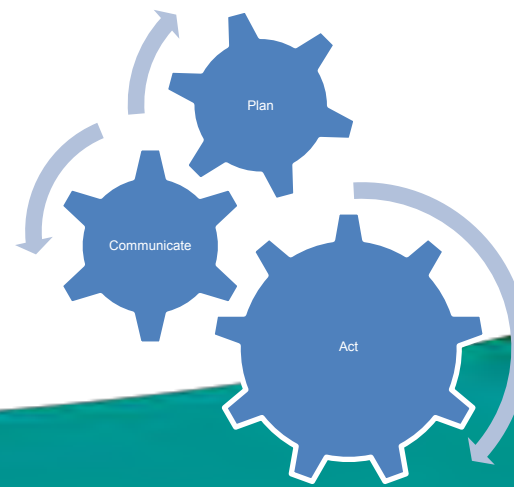
Potential for scale

- **4 November 2016 the Paris Agreement entered into force** with clear objectives, focus on scaling up to meet our global climate and development challenges
 - To date 156 Parties have ratified (out of 197 Parties to the UNFCCC Convention) - global-national-local relevance
- **Nationally Determined Contributions (NDCs)** have an in-country focus, but the local level has mostly not yet explicitly connected to the national commitments – could this help to raise the level of ambition?
- **Explore local contribution** via sectoral initiatives such as the BEA or strategic comprehensive initiatives such as the Global Covenant of Mayors for Climate and Energy

Vertical integration (i)

WHAT?

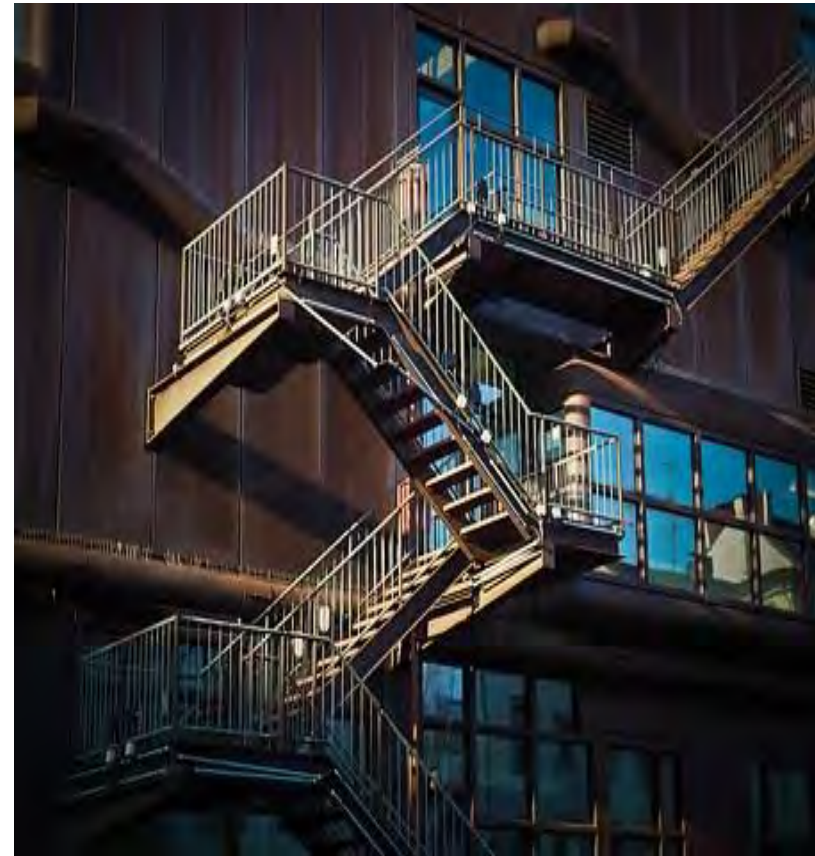
- Establishing effective Vertical Integration to address Climate and Energy Challenges in-country:
 - A process and a common approach of multi-level governance (all levels of government)
 - A platform for fruitful interaction and coordination
 - A system of regular exchange between peers (government) dealing with joint planning, implementation, communication, monitoring and reporting



Vertical integration (ii)

Vertical Integration between different levels of government – national, sub-national and local – is essential to **mutually reinforce approaches** for addressing climate change, sustainable energy **planning, implementation and reporting.**

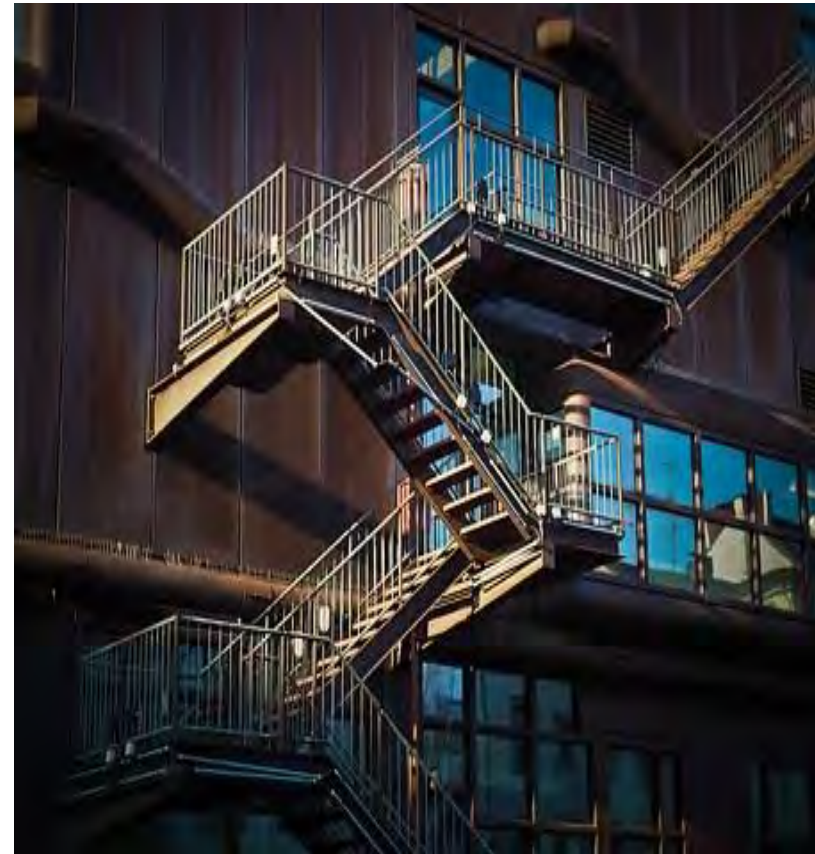
(ICLEI 2015)



Vertical integration (iii)

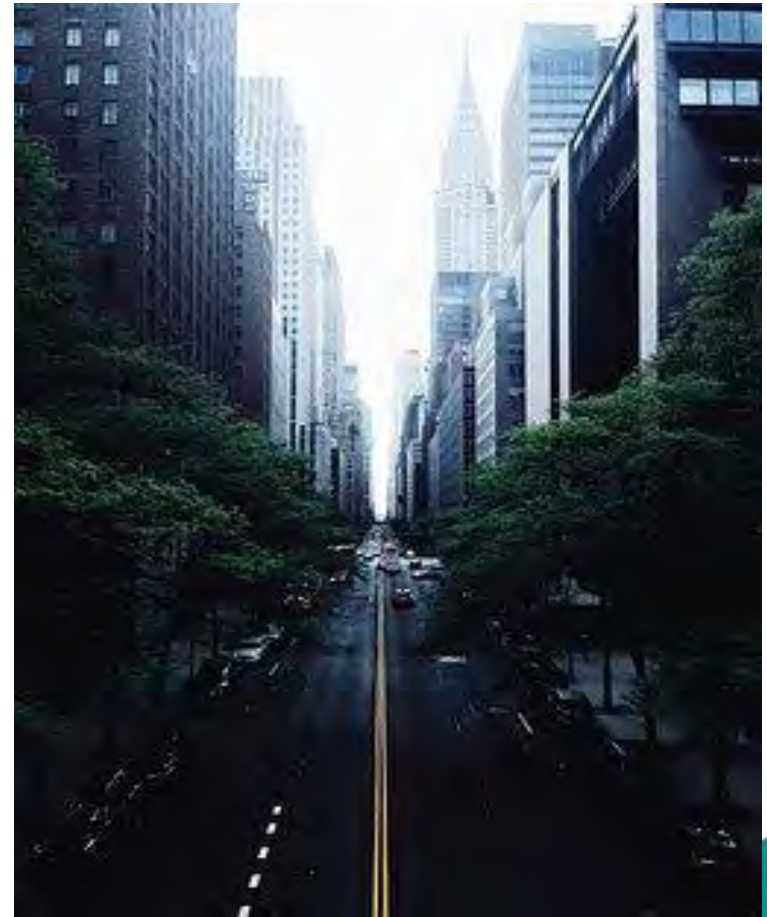
Necessary, because:

- Need to optimize governmental resources and capacities
- Increasing challenges require governmental leadership
- Trend in GHG emissions and increasing climate impacts - business as usual (BAU) not acceptable and this is a complex area
- Focus on differentiated yet coordinated mandates and roles of levels of government:
 - National level role and mandate, establishing enabling and supportive framework is critical
 - Local level is implementation level - urban planning, buildings, transport, energy, water and waste sectors



Benefits

- Global and national climate goals are effectively implemented through appropriate enabling of all levels of government
- Comprehensive mobilization and involving key governmental stakeholders – multi-sectoral, multi-disciplinary
- Inclusiveness and co-ownership of tackling challenges and solution development
- Improve policy coherence and implementation impact
- Mainstream successful policies embedded in a national framework



Implementing

Vertical integration process is:

- Unique to the country context – develop own system
- An iterative approach
- A long-term approach

Can address:

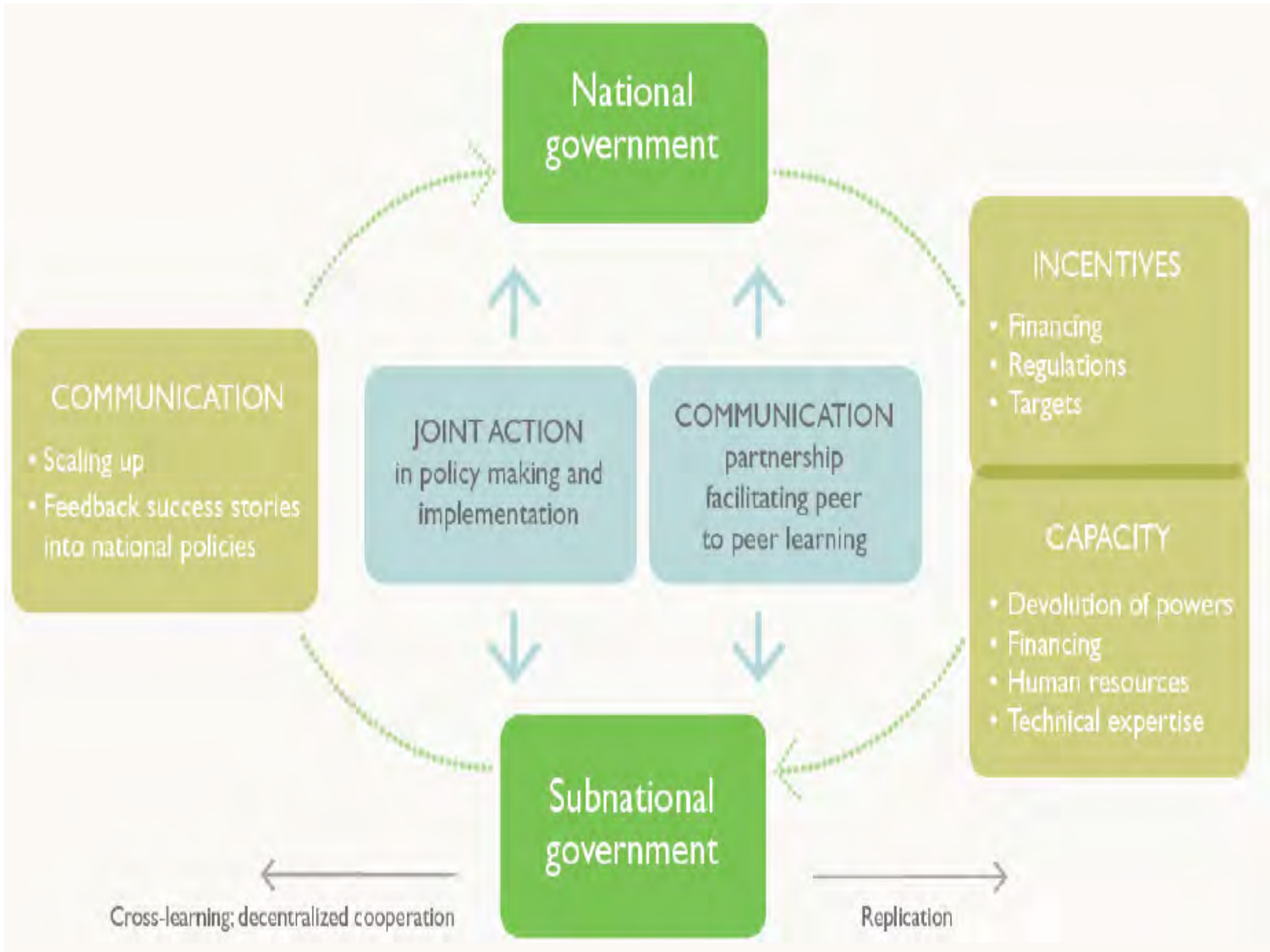
- Institutionalizing climate and energy (understanding) in all governmental structures
- Optimizing institutional structures and processes
- (Re)define mandates and roles
- Understanding required capacity at all levels

Action areas:

- Climate commitments / contributions (NDCs): joint defining of targets and mapping opportunities
- Greenhouse gas emissions: accounting, align processes, systems and standards
- Strategies and action plans and Strategies: co-design low emission resilient development, NDCs, NAPs, NAMAs, sectoral
- Finance: needs and access, incl. policy mechanisms

Examples of roles & responsibilities

National government	Sub-national and local govt
Define enabling and supportive framework, focus on country-wide strategy, appropriate policies	Engage with key stakeholders at all levels, including local community – co-design and implement local plans
Lead on vertical integration process creation, recognise role of every level of govt and empower these	Inspire and request national-level policy making, identify gaps and needs requiring national response
Ensure availability of resources, capacity and growing knowledge base, manage MRV process	Accelerate climate response and improve MRV of local climate action, tracking co-benefits
Provide greater regulatory autonomy to enable scaled action	Strategic and operational focus, pilot innovative approaches, implement



carbonn[®] Climate Registry

The global reporting platform for cities, towns and regions tackling climate change
- created to support transparency, accountability and credibility



721

10% of the world
population
represented



953

Number of entities
registered to the
cCR



82

Countries



1429

Climate Targets



6284

Mitigation and
Adaptation
actions

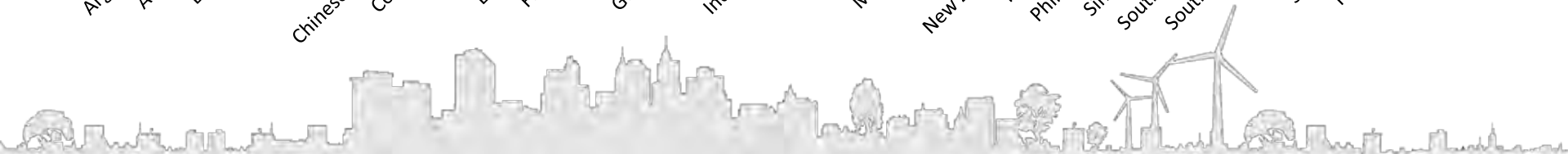
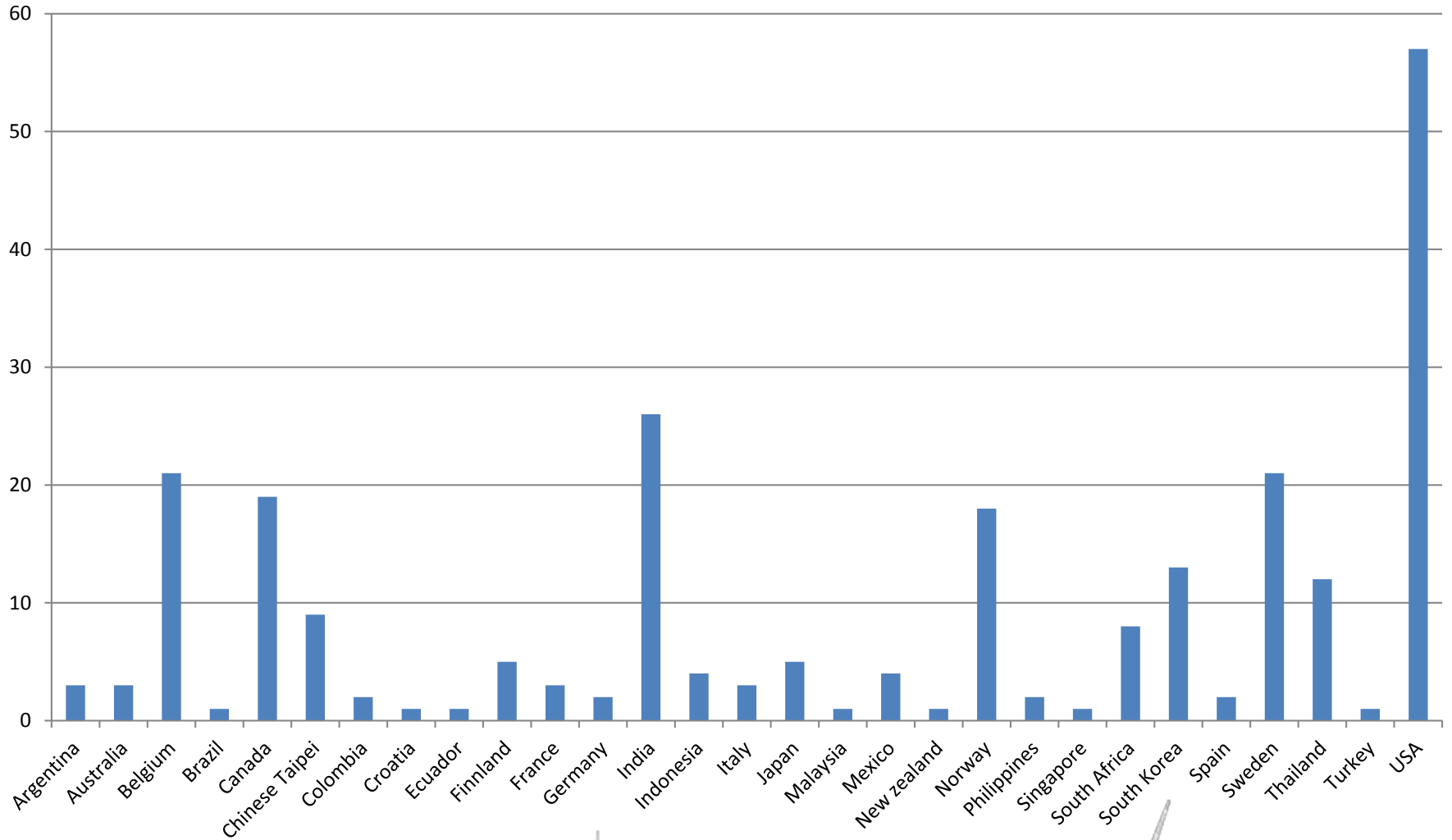


1.1

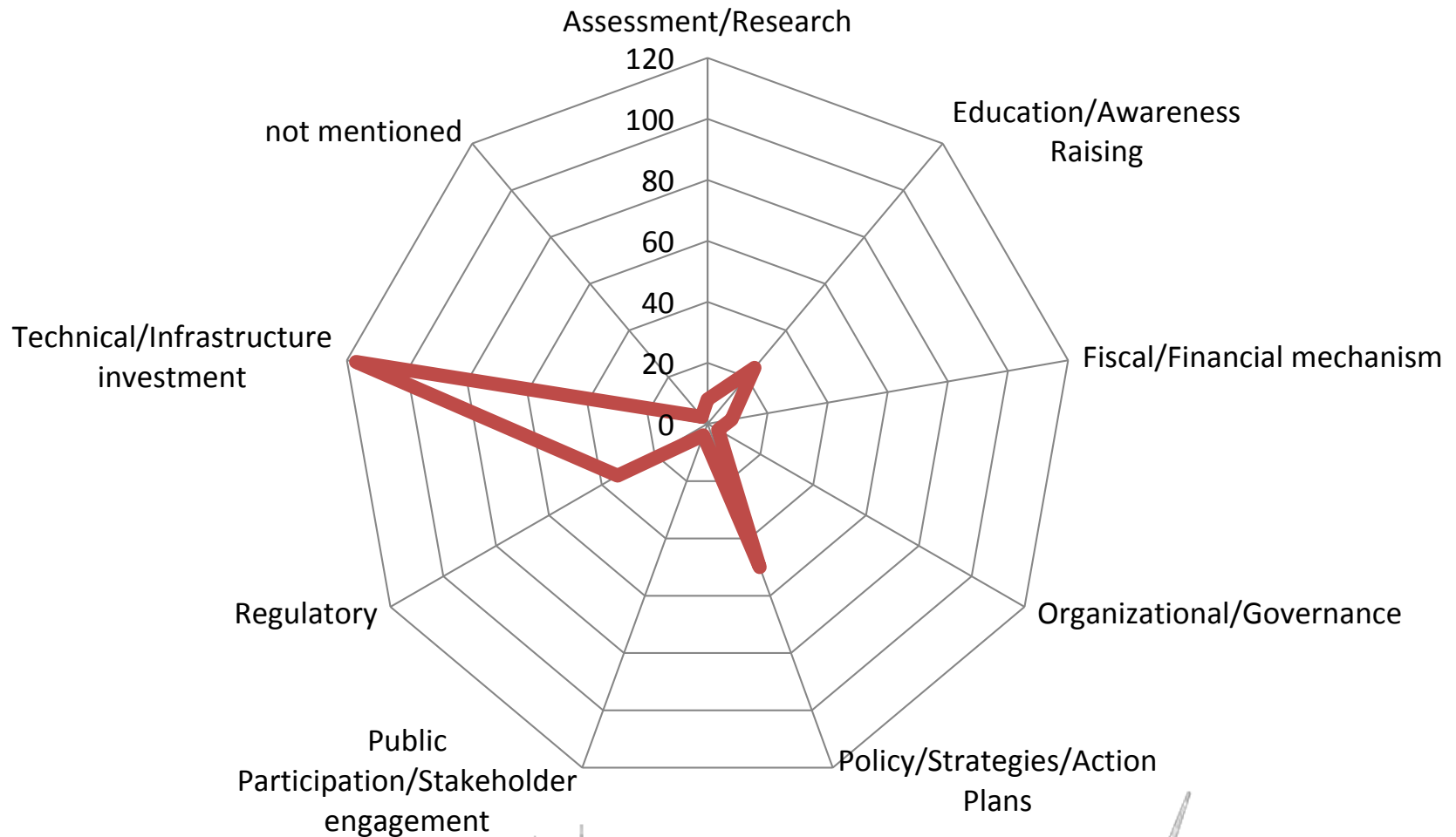
Committed GHG
emission
reductions by
2020

Data on Buildings: 312 mitigation targets relating activities in the building sector, by 148 reporting entities. Targets include: 126 GHG reduction targets, 139 energy efficiency targets and 47 renewable energy targets.

Building related targets clustered by country



Building sector – types of actions reported



Partnerships at multiple levels, multiple processes



TAP | **Transformative Actions Program**

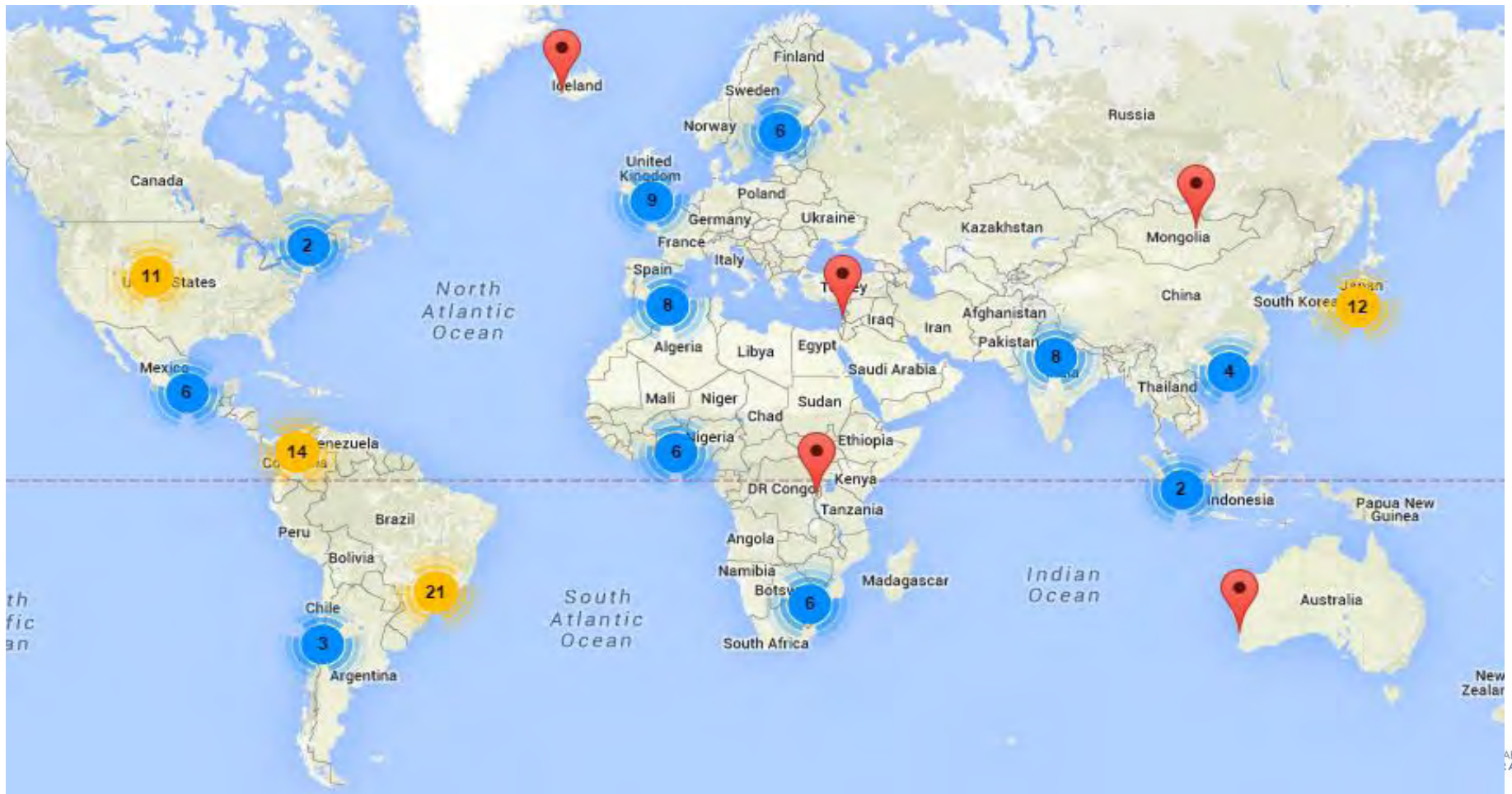
Transformative Actions Program – scaling up local climate action

The TAP was launched in 2015 to send a strong message to COP21: demand exists, project pipeline with a combined investment need of US\$ 9 billion

It is managed by ICLEI, and supported by a growing partnership, to explore access to finance.

Local and subnational governments need capacity development support to develop financeable project concepts – TAP partners seek grant funds to support them.

Global North and South seeking finance: in 2015 we received 120+ applications from 87 cities & regions in 41 countries



Four TAP Pillars

Pipeline:

- Collection of TAPplications – demand by local and subnational governments
- (Pre-) Project Preparation Facility, providing basic evaluation, feedback and quality check
- Ready to go to Support Services

Services:

- Project Support Services with TAP partners, including:
 - ✓ Capacity development
 - ✓ Technical support
 - ✓ Pre-feasibility check
 - ✓ Knowledge exchange
 - ✓ Relationship building

Platform:

- Visibility and promotion of TAP Projects
- Information structured for investors and funders
- Promotion of TAP partners
- Uniform display and searchable format (by country, by theme, etc.)

Advocacy:

- Call for effective financing mechanisms (with CCFLA)
- Global visibility for TAP Projects
- Call for support to help achieve Paris Agreement and Nationally Determined Contributions (NDCs)

TAP projects in BEA cities

ADAPTATION STRATEGY INCLUDING A RESILIENCE LENS	Infrastructure improvement measures to address vulnerability to earthquakes;	http://tap-potential.org/projects/adaptation-strategy-including-a-resilience-lens/	Mexico City, Mexico
EE & RE IN HOSPITALS	Program on energy efficiency in public buildings: Mexico City has developed the Integral Program for Energy Efficiency and Solar Water Heating in 19 hospitals of the Federal District.	http://tap-potential.org/projects/e-e-re-in-hospitals/	Mexico City, Mexico
LOW COST HOUSING WITH NEXUS APPROACH	Santa Rosa is working on two low-cost housing projects, to be showcases of green building, innovative waste water management, public-private partnership and social equality	http://tap-potential.org/projects/low-cost-housing-with-nexus-approach/	Santa Rosa, Philippines
THERMO-TECHNICAL REHABILITATION OF PRECAST PANEL BUILDINGS IN ULAANBAATAR CITY	Building renovation and energy efficiency improvement in existing apartment buildings in extreme climate zone	http://tap-potential.org/projects/thermo-technical-rehabilitation-of-precast-panel-buildings-in-ulaanbaatar-city/	Ulaanbaatar, Mongolia

Contact

Maryke van Staden

Manager, ICLEI's Low Carbon City Program

Director of the Bonn Center for Local Climate Action and
Reporting (carbonn Center)

ICLEI – Local Governments for Sustainability

World Secretariat

Bonn, Germany

Web: www.iclei.org

E-mail: maryke.van.staden@iclei.org