



South African
National Implementing Entity
of the Adaptation Fund

Scaling up for enhanced adaptation action: Experiences from South Africa's NIE to the Adaptation Fund:

Dr. Mandy Barnett, NIE Director, SANBI
Workshop on Long-term Climate Finance
4 and 5 June, 2015, Bonn, Germany

SANBI 
Biodiversity for Life
South African National Biodiversity Institute



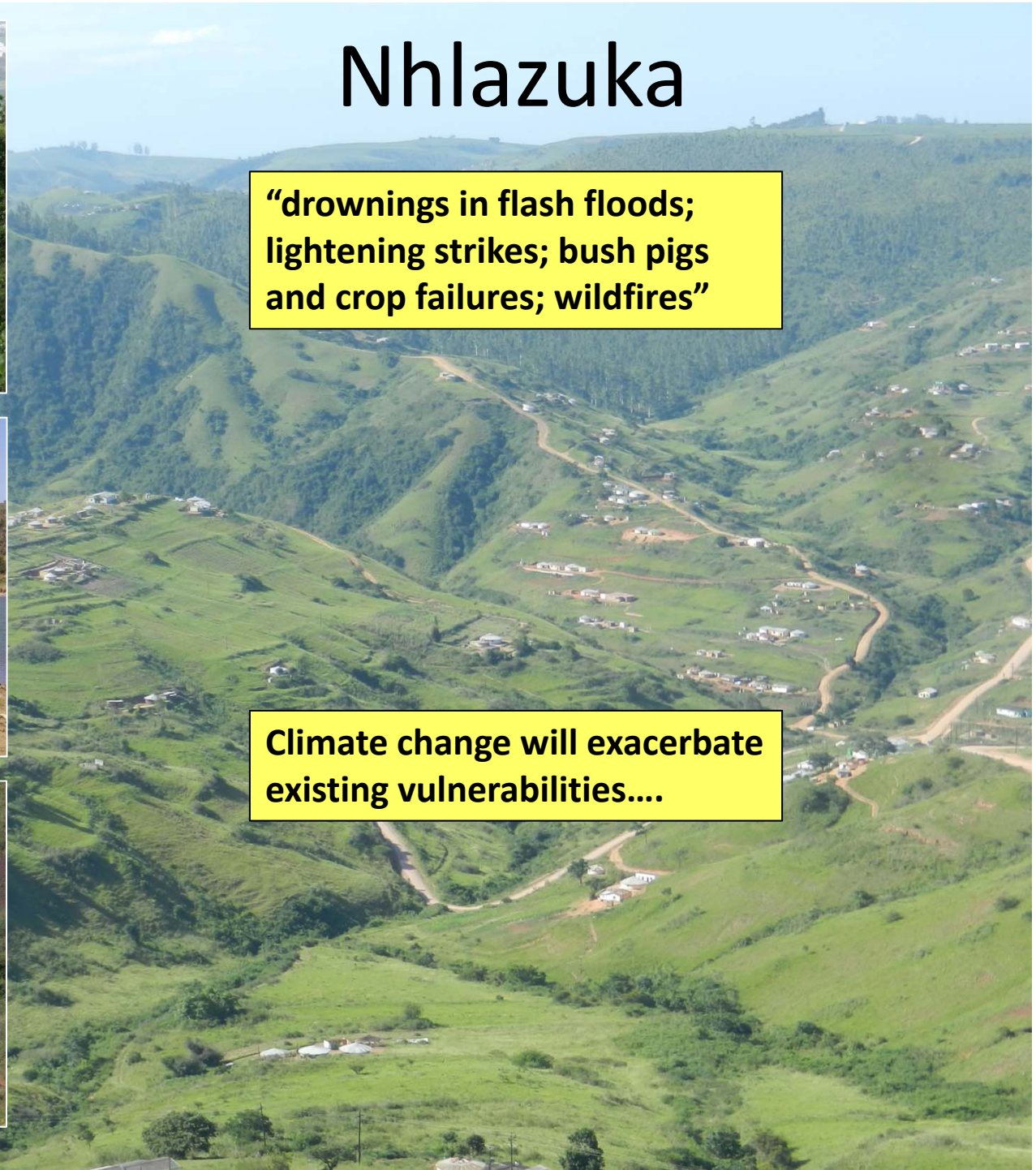
Nhlazuka



**“drownings in flash floods;
lightening strikes; bush pigs
and crop failures; wildfires”**



**Climate change will exacerbate
existing vulnerabilities....**



The Project Development Process...

1. Sept 2011: Accreditation
2. Sept 2012: Operationalisation
3. August 2012: **NIE Steering Committee**
4. Oct 2012: **Stakeholder Consultation**
5. Nov 2012: **Investment Framework**
6. Nov 2012: Call for Proposals
7. Jan 2013: **Proposal selection and development**
8. June 2013: Concept submission
9. July 2013: Concept approval 😊
- 10. Detailed design – 12 months**
11. July 2014: Submission for October 2014 board meeting
12. October 2014: Approval of both projects
- 13. November 2014 – July 2015: Pre-inception**
14. July 2015: Planned inception



South African
National Implementing Entity
of the Adaptation Fund

Continuous:

- National Governance and oversight
- Local level consultation and alignment
- Intense participatory processes
- Integration of local and indigenous knowledge
- Capacity building and institutional support



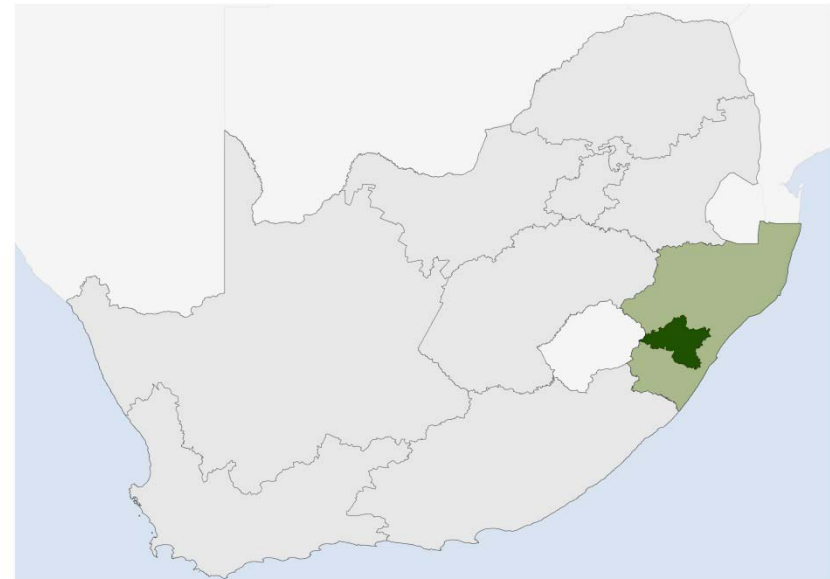
Project 1:

Building resilience in the Greater uMngeni Catchment, South Africa

(USD 7.5 million)



- Early warning systems that support local communities and small scale farmers
- Climate-proof settlements (built and ecological infrastructure) and informing settlement planning
- Climate resilient agriculture
- Lessons learnt



Nhlazuka



**“drownings in flash floods;
lightening strikes; bush pigs
and crop failures; wildfires”**

**Climate change will exacerbate
existing vulnerabilities....**

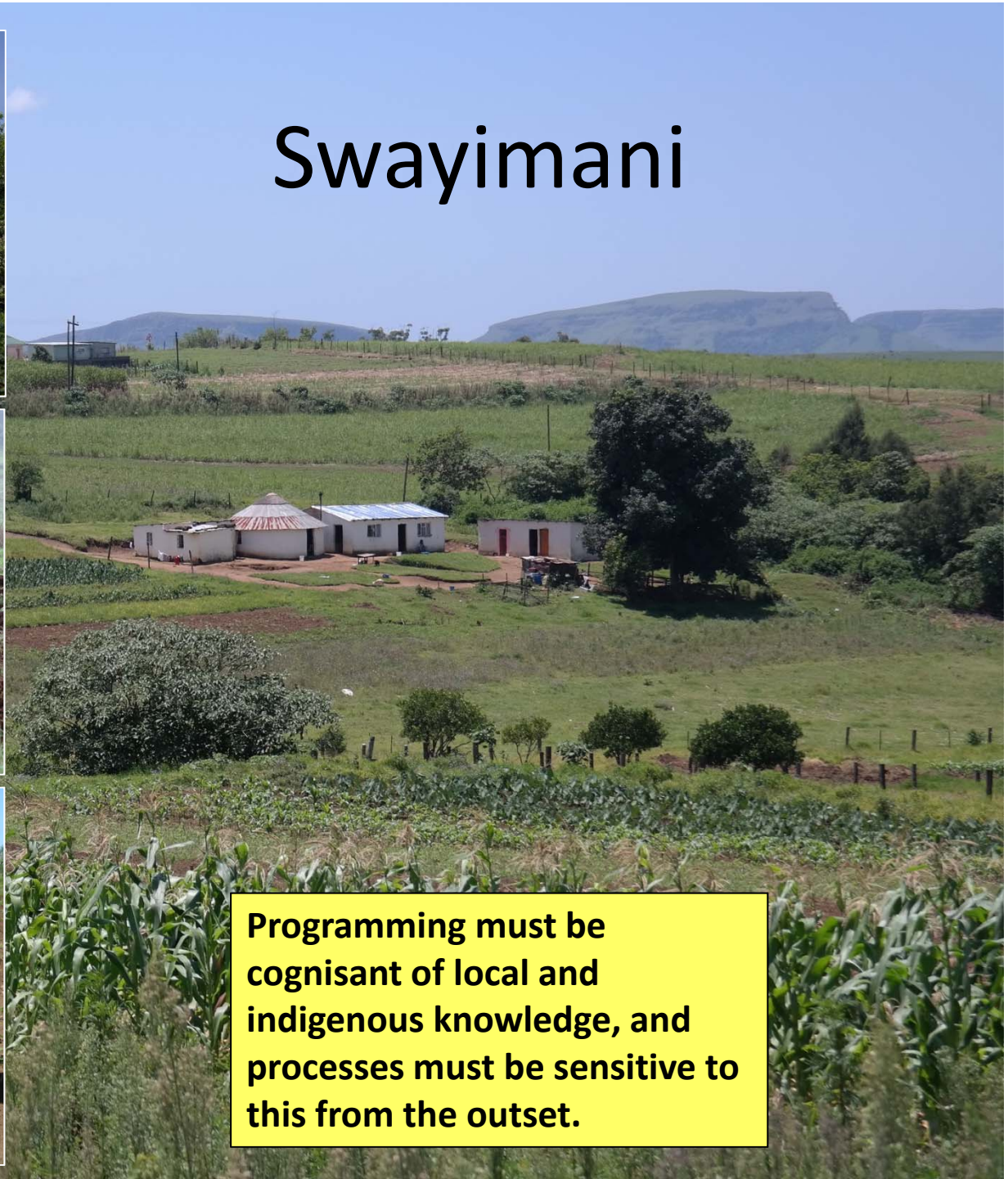
**Integrated EWS, infrastructure
improvements (bridges;
lightening conductors),
agriculture and ecological
infrastructure investments....**

Vulindlela



Integrated and cross sectoral investments at the local level enhance local level adaptation responses

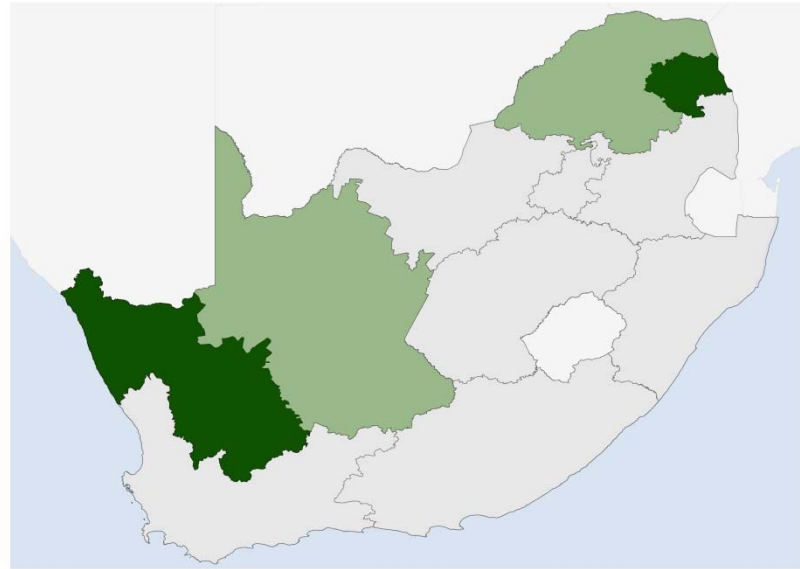
Swayimani



Programming must be cognisant of local and indigenous knowledge, and processes must be sensitive to this from the outset.

Project 2: Taking Adaptation to the Ground: A Small Grants Facility for enabling local level responses to climate change (USD 2.5 million)

- Provide small grants (at least 12 of approx. USD100 000 each)
- Build local institutional capacity
- Gather lessons to inform scaling and replication of small grant-financing approaches



‘Facilitating Agencies’ – build capacity and support implementation so that new actors can benefit directly

Participatory processes enabled the identification of nuanced responses that are relevant to local communities

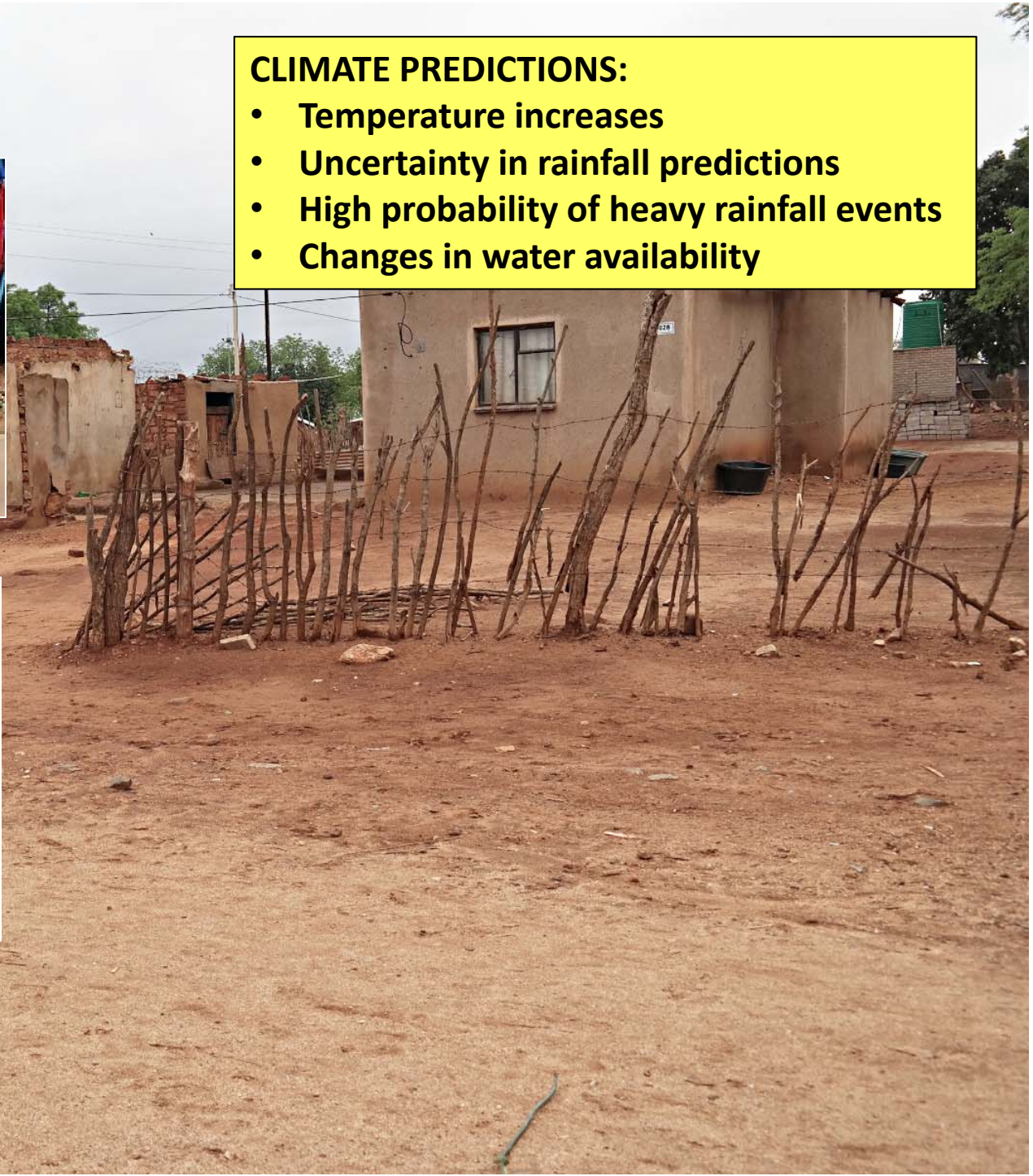


CLIMATE PREDICTIONS:

- Temperature increases
- Uncertainty in rainfall predictions
- High probability of heavy rainfall events
- Changes in water availability



Mopani





Mopani

CLIMATE PREDICTIONS:

- Temperature increases
- Uncertainty in rainfall predictions
- High probability of heavy rainfall events
- Changes in water availability



IMPACTS:

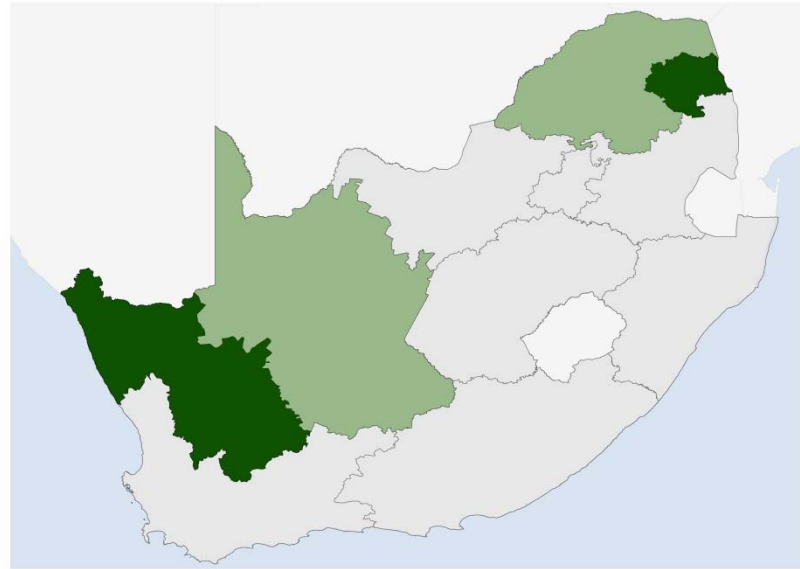
- Reduced agricultural viability
- Storm damage to infrastructure
- Increased reliance on DRR services
- Degradation of Ecological Infrastructure



RESPONSES:

- Shade structures
- Drought-resilient crops
- Micro/drip-irrigation systems
- Rainwater harvesting
- Insulation of houses
- Drought-resilient trees
- Small-scale early warning systems
- Wetland and catchment rehabilitation

Project 2:
Taking Adaptation to the Ground: A Small Grants Facility for enabling local level responses to climate change
(USD 2.5 million)



Adaptation actions through 3 Investment Windows



Climate-smart
Agriculture



Climate-resilient
Livelihoods



Climate-proof
Settlements

12 small grants in 2 target areas valued at US\$ 1.5 million



In summary...

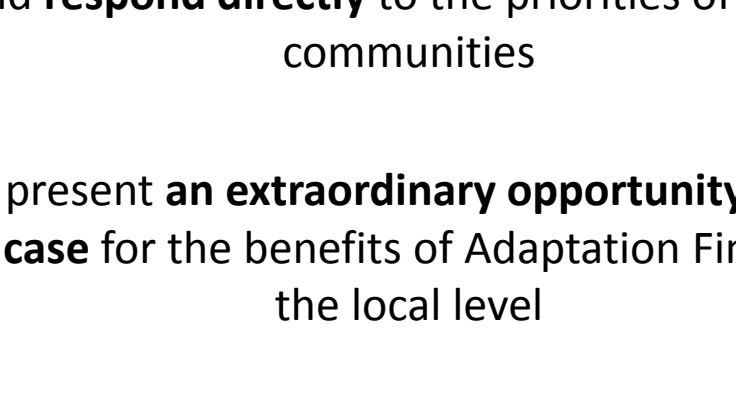
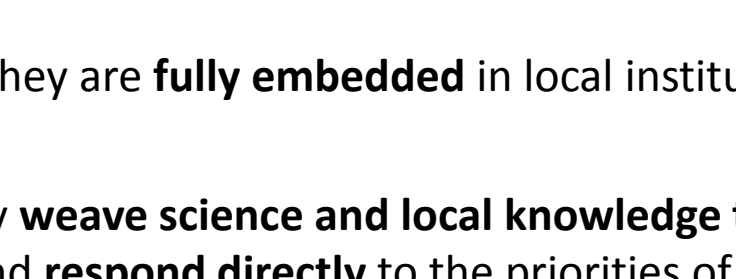
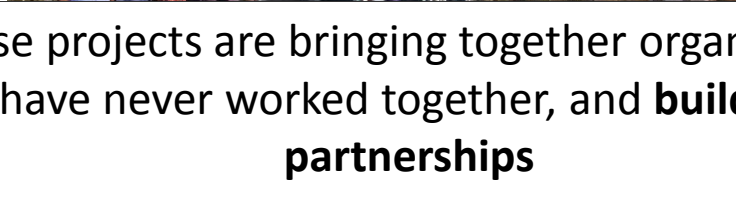
These projects are bringing together organisations that have never worked together, and **building new partnerships**

They are **fully embedded** in local institutions

They **weave science and local knowledge together** and **respond directly** to the priorities of target communities

They present **an extraordinary opportunity to make the case** for the benefits of Adaptation Finance at the local level

They are **teaching us lessons** that will guide future approaches to climate finance programming





Clues for scaling up:

Invest in Governance Structures that can elevate the profile of the work and support long term sustainability

Locate efforts within existing development interventions , **mainstream CCA into ongoing development programmes and unlock co-benefits**

Invest in bottom-up participatory programming and good process- recognise local and indigenous knowledge and support local level action

Recognise the importance of widening the implementation partnership and **support capacity development and 'readiness' at all levels**

Recognise the role of NIEs can transformative development....and especially in bringing new players into the implementation space



South African
National Implementing Entity
of the Adaptation Fund



Thank you

