

Accessing climate finance from multilateral climate funds: Experiences from the Pacific

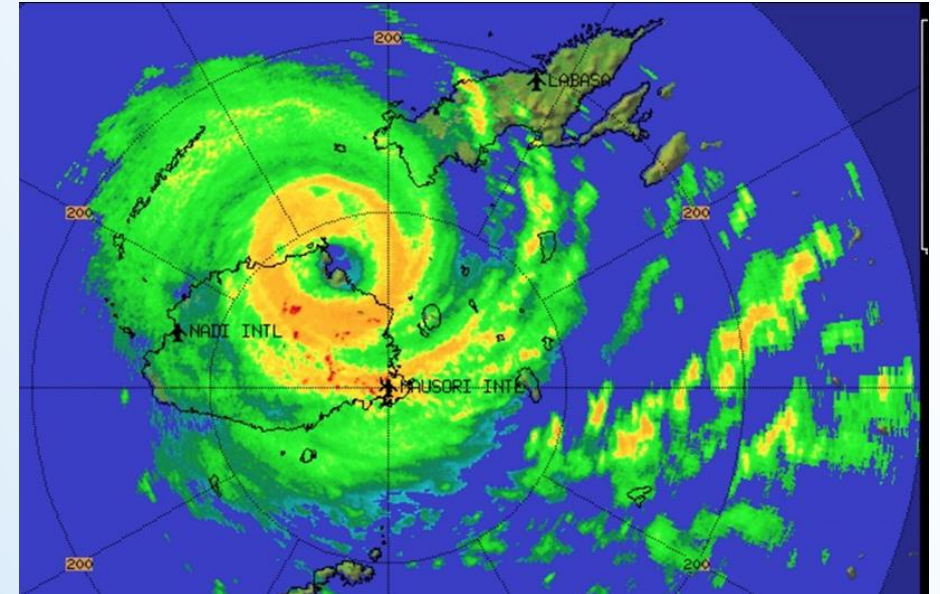
Espen Ronneberg
Climate Change Adviser
SPREP

Concrete steps to access funding

- SPREP was requested to become RIE to AF and GCF by Pacific SIDS, assisting region with projects, and assist with NIE accreditation
- Process documented and published for guidance for projects and NIE accreditation
- Many agencies supporting readiness and accreditation, but initial lack of coordination
- Regional Technical Support Mechanism (RTSM) highly successful in supporting Pacific, but funding at an end

Challenges faced in this process

- Lack of SIDS experience at AF/GCF initially – ongoing knowledge issue
- Enormous capacity challenges in Pacific – lack of understanding process, procedures, confidence in concepts
- RTSM was able to assist, but funding is ending, and lack of interest to pursue
- Other AEs lack of interest in region, as well as too high thresholds for accepting projects – USD 100 mill.
- Costs and time required to complete a proposal are still very high



Technical support received

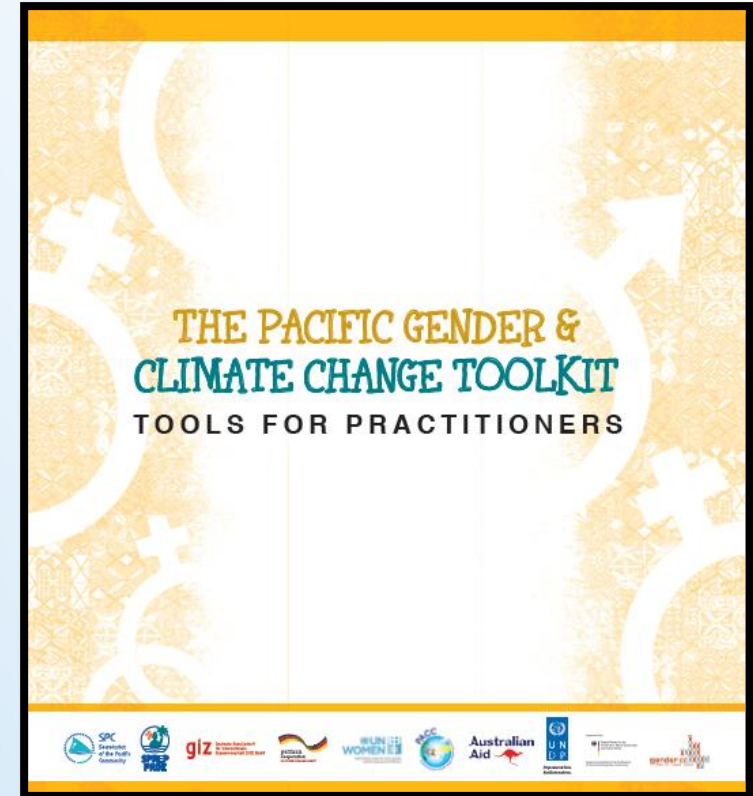


1. Most technical support offered is for countries not RIEs, but bilateral support was given to SPREP
2. On line tools for adaptation planning and finance decision making are being developed with Uni
3. GEF project to upgrade SPREP procedures, regulations and policies has assisted
4. Further documentation of process will be undertaken for sharing with region

There needs to be much more coordination and cooperation – the hard part

Experiences from SPREP

- Working with other agencies, SPREP developed Climate change and gender toolkit, to be used in development and implementation of projects in region – now operational for SPREP. Covers all groups.
- This has been combined with a Mainstreaming Guideline to ensure that all vulnerable groups have their concerns and needs addressed in climate change work.
- Requires continuous training and back-up support to be made effective



<https://www.pacificclimatechange.net/document/pacific-gender-climate-change-toolkit-module-1-introduction>

Challenges

- The RTSM, as a model, needs to be continued, enhanced and replenished
- Dialogue between AF/GCF and RIE/Pacific needs further enhancement beyond the structured dialogues workshops – inter-action needed
- Greater coordination of effort with other partners
- Partners need to understand who they need to work with, not just whom they choose to work with
- When working with SIDS, AEs should not set unreasonable thresholds for projects

Room for improvement

- Unfortunately, the MIEs processes provides few opportunities for Pacific to build capacity to prepare CCA projects
- Capacity building needs of national governments is not to be able to prepare bankable CCA projects, but to acquire the knowledge and technical skills to manage the process of project preparation. – A dedicated person / unit / NDA . This is urgent
- But no obvious project preparation facilities at national level and SPREP is now taking on more of this role
- With a few exceptions – SPREP, FSM/MCT, COOK ISLANDS/ MFEM, there are no regional and national institutions in the Pacific (incl. Asia) that have direct access to international climate financing.
- Even if more countries had direct access, they have limited capacity to prepare bankable CCA projects for international financing.
- NIEs and RIE in the Pacific have minimal capacity to prepare bankable CCA projects for financing.
- Therefore, the great majority of international financing for CCA projects is accessed through (MIEs) – principally, UNDP, ADB, WB.

Organisational Goals

1. SPREP has information, knowledge, and communications systems that get the right information to the right people at the right time and influence positive organisational, behavioural and environmental change.
2. SPREP has multi-disciplinary processes in programme delivery and in supporting Members to develop national and regional policies and strategies.
3. SPREP has a reliable and sustainable funding base to achieve environmental outcomes for the benefit of the Pacific islands region and manages its programmes and operations to stay within its agreed budget.
4. SPREP is leading and engaged in productive partnerships and collaborations.
5. SPREP has access to a pool of people with the attitudes, knowledge, and skills to enable it to deliver on its shared regional vision.

Thank you for your attention

espenr@sprep.org

www.sprep.org

www.pacificclimatechange.net