

weADAPT INFORMATION PACK FOR COP13

Welcome to weADAPT!

weADAPT is an ever expanding group of people collaboratively working on issues of climate adaptation. As climate change moves up the agenda, more and more people are including adaptation in their work. weADAPT provides guidance by pooling expertise from a wide range of organisations that contribute to adaptation science and practice.

The focus of this collaboration is the continuing development of the weADAPT platform, a suite of new and innovative tools and methods, datasets, experiences and guidance that is a resource for strengthening the capacity of those tasked with undertaking adaptation. We see adaptation as a process of social learning, relevant for specific contexts, and producing adaptation outcomes and processes that are robust against a wide range of future situations.

www.weADAPT.org is the portal page for the platform. Currently two sections are open: wikiADAPT and the prototype Climate Change Explorer Tool.

wikiADAPT is an interactive space for reading about, discussing and contributing to current thinking and experience on climate adaptation. The wiki contains core themes on Framing Adaptation, Risk Monitoring, Decision Screening, and Communication, as well as different tools and methods, worked examples and useful external links to aid adaptation. There are several user guides on wikiADAPT which have been designed by the team to guide you through the information that we think would be useful about a particular area. Examples include guides for NAPAs, Community Based Adaptation, and National Communications.

Climate Change Explorer Tool packages data access routines with guidance and customized analytical and visualisation procedures. The tool provides users with a sound analytical foundation from which to explore the climate variables relevant to their particular adaptation decisions. With an initial focus on Africa, the tool is designed to simplify the tasks associated with the extraction, query and analysis of climate information.

Browse through this info-pack, visit us on-line, join us at

www.weADAPT.org

How to get involved in weADAPT

www.weADAPT.org is a portal, with access to data, tools and guidance. This is the best place for getting to get started. [wikiADAPT](#) describes various aspects of climate adaptation and documents the data sets, tools and worked examples. At the [weADAPT](#) portal page, you will see links to [wikiADAPT](#), as well as links to the Climate Change Explorer tool and the consortium that overseeing [weADAPT](#), the Centres for Climate Adaptation. Clicking on the [wikiADAPT](#) link will take you through to the wiki pages. [wikiADAPT](#) also can be accessed directly via **www.wikiADAPT.org**.

Everybody can use the wiki. However, in order to add or edit material you must register your details using the on-line form. This is simply so that we know who has made what contributions, so we can monitor the quality of the content.

The wiki is collaborative! Please take time to learn how you can get involved in editing and improving it, and feel free to contribute!

- Go to **www.weADAPT.org**
- Click on the link to [wikiADAPT](#)
- Browse the areas you want, see where you can get involved!
- Register to contribute and edit the wiki, using the on-line form

If you have any problems using the site please contact us at info@wikiADAPT.org, or email our technical support at ndaisley@gmail.com

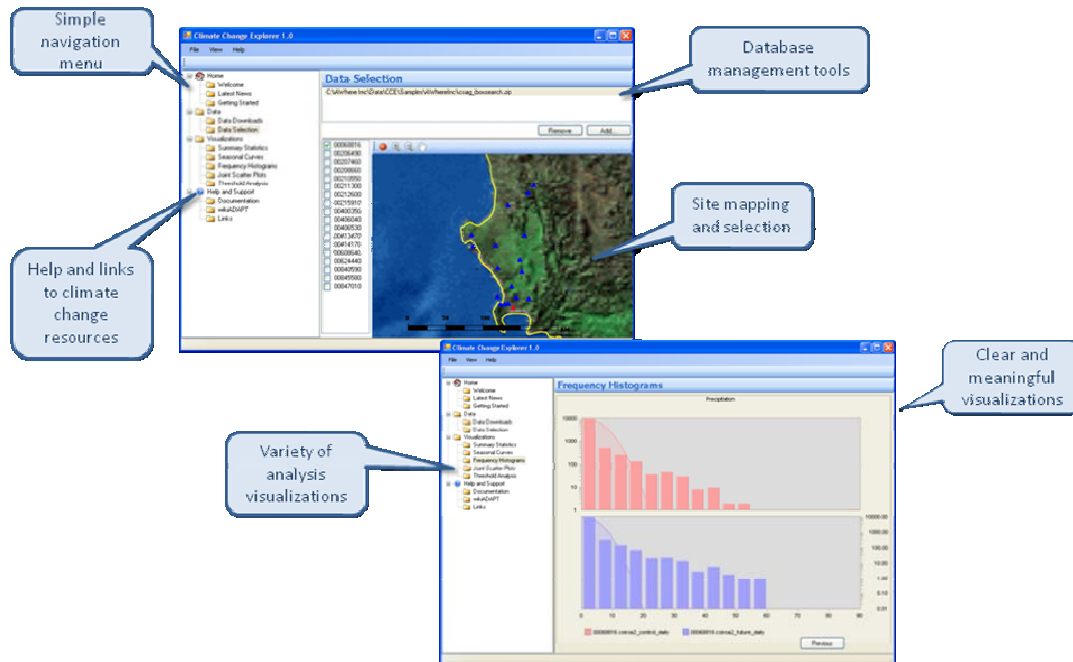
Data, tools, methods, and approaches

Available and planned elements for the platform Contributors welcome!

Adaptation targets	Discrete choice analysis	National communications (guide)*
African climate station data*	Discussion pages for each topic*	National Programmes of Action (guide)*
African downscaled climate scenarios*	Downscaling climate scenarios & regional climate models	Participatory approaches
AWhere spatial visualisation software (GIS)*	Ecological Monitoring Networks	Participatory videos
Actor-network mapping	Elimination by aspect and rule based decision making*	Policy Decision Framework
Adaptation decision making*	Ethnographic approaches	Policy/Stakeholder scenarios.
Adaptation risk screening	Global climate station data	Project baseline to incremental action (guide)*
Agent-based modelling	Global vulnerability data*	Prototypes & worked examples
Bayesian network	Glossary (annotated)	Qualitative comparative analysis (QCA)
Checklists and inventories of things to consider	Hot spots	Resilience
Climate adaptation database	Institutional policy matrix*	Roadmap exercise
Climate change explorer tool (CCE)*	Institutional surveys	Robust decision making
Climate scenarios for developing countries	Interviews with experts & users	Role playing exercises
Climate scenarios for developed countries	Java Expert System Shell (Jess)*	Spatial planning
Communication tools	Knowledge base platforms for evaluation criteria and adaptation options	Stakeholder analysis and engagement*
Communication as a cycle*	Knowledge elicitation tools (KnETs)*	Stated-preference analysis
Community participation and monitoring	Learning by example	Storyboards
Community-based approaches (guide)*	Livelihood vulnerability matrix*	Triangle of information
Community-based disaster risk management	Meteorological data archives and automated retrieval, over 2000 stations worldwide*	Understanding climate trends and forecasts*
Community-based videos	Micro-finance and insurance	User oriented approaches
Conservation & biodiversity	Multi-Criteria Analysis (MCA)"Meteorological data archives and automated retrieval (2000+ stations worldwide)"	Voting and ranking exercises*
Data envelope decision analysis		Vulnerability assessment manual
Decision climate envelopes		Vulnerability mapping
* operational		Water Evaluation and Planning System (WEAP)*

Climate Change Explorer Tool

The Climate Change Explorer (CCE) Tool is a desktop client that can be run on its own or as an extension to the AWhere spatial information system. The CCE tool provides an interface to download, manage and visualize climate models in a user friendly graphical user interface.



DESIGN OF THE CLIMATE CHANGE EXPLORER

A wizard style interface walks users through a step by step process to retrieve climate data for user-defined geographic coordinates. The climate data for Africa (other regions are being developed) is accessed through the University of Cape Town Climate Systems Analysis Group archive. The stations for which data are available are projected onto a map, where users select the desired stations for analysis. Routines explore and visualise historical and projected climate trends. Visualizations and queries can be created, including summary statistics, seasonal curves, frequency histograms, joint scatterplots and threshold analyses.

The Climate Change Explorer Tool is a collaboration led by the University of Cape Town CSAG and AWhere Inc., with contributions from SEI and the University of Exeter. AWhere SIS™ is a desktop data mapping toolset. It provides easy-to-use tools that help decision-makers quickly summarize large and cumbersome data sets into information-rich, visually appealing maps, charts and tables. More information on the lead partners is available at www.AWhere.com and www.csag.uct.ac.za

FAQs

How can I be sure that the material on wikiADAPT is reliable?

In order to edit the wiki, users must register their details on the weADAPT portal page. This allows us to track who has made which contributions to the wiki, and ensure that they are from an authentic source. As on wikipedia, the editorial board will use banners to flag pages, which are opinion pieces, those, which are purely factual, and those, which need more, work and references. The editorial board also has the power to remove any offensive information.

How do I edit wikiADAPT?

In order to edit the wiki you will need to register your details by filling out the on-line registration form, so that we can track who makes which contributions. wikiADAPT uses the same software as wikipedia, so if you have ever edited wikipedia editing the process will be familiar. Editing is very simple, and there is guidance provided on the site about how to edit and create pages.

How do I navigate wikiADAPT?

There are several ways to navigate wikiADAPT. If you are looking for specific advice, there are several user guides to take you through the platform, for example a 'Community-Based adaptation' guide. There is a Categories function as part of the special pages, where you can browse wiki pages by area, for example 'Vulnerability mapping'. You can also browse the wiki through its core themes and see what information is useful to you, or use the 'Search' function.

There are lots of 'platforms', why should I use this one?

True, there are lots of web sites! We feel that what sets weADAPT apart is its focus on

- integrating different types of tools and methods, especially synergies between technical and participatory approaches
- diverse and open partnership with their collaborative focus and founding principles of joint ownership and co-creation of knowledge
- tailored approaches that respond to user needs and are context-specific
- evolving nature of ideas and sharing mechanisms to respond to changing science and adaptation needs

weADAPT emphasizes the importance of robust decision-making in the face of uncertainty, and the importance of adaptation as an ongoing process of social learning.

I'm confused! What is the difference between weADAPT and wikiADAPT?

weADAPT is the overall name of the platform. It comprises several different elements, including wikiADAPT, data, tools and methods for adaptation and the network of people working together..

wikiADAPT is the documentation element of the platform. It is the place for information about weADAPT, guidance on the process of adaptation, information about the tools and methods available through weADAPT, reporting about the platform and ideas on how to engage and continue collaboration.

Who is weADAPT? What are the funding sources?

weADAPT is a collaboration under the umbrella of the Centres for Climate Adaptation. The Centres are independent institutes, primarily in developing countries, who are developing practical advice, tools and training on climate adaptation. The Stockholm Environment Institute hosts the secretariat for the Centres (at this stage of development). We welcome interest from other organisations—see the Centres page in wikiADAPT.

Major resources for the development phase of weADAPT (through mid 2008) has come from SEI's Climate for Development project funded by Sida . This project provided matching funds for the ACCCA network (funded by the EC and Defra, coordinated by UNITAR and START, with UCT and ENDA as key partners) and three EC projects (NeWater, ADAM, and CIRCE). However, all of the founding organisations and our partners have contributed substantial resources to the collaboration, not least the time and advice of senior staff and pre-existing knowledge, tools and data sets.

Can I cite the information on wikiADAPT, and how do I do this?

Information on the wiki may change as new material is contributed. Be aware that some of the material is opinion rather than fact. Many pages are from trusted sources and approved by the editorial team.

You should cite the wiki material as:

Page Name. (Date last modified-you can find this in the history of the page). In wikiADAPT, the collaborative platform on climate adaptation. (Date information retrieved), from www.wikiADAPT.org/Pagename.

I'm having trouble uploading a file/inserting an image/creating a page

There is guidance available on wikiADAPT about all of the above under 'Getting Stated FAQ', however if you still have problems, email us at info@wikiadapt.org

List of partners and brief description

If you join us in this collaboration you will become part of a growing network of organizations working on climate change adaptation. The following organizations are already part of the network and would welcome the chance to work with more partners!

- **AWhere Inc.:** A spatial information and visualisation company that provides user-friendly software to use in exercises such as vulnerability mapping, www.awhere.com
- **ENDA Tiers-Monde:** An international organisation with diplomatic status based in Dakar, Senegal, with a network of decentralized nodes worldwide, www.enda.sn
- **FAO:** The UN Food and Agriculture Organisation (FAO) is world renowned for their work on agricultural development, www.fao.org
- **START:** The global change System for Analysis, Research and Training enables research on global environmental change through a network of collaborating centers and partners in Africa, Asia and Oceania, www.start.org
- **Stockholm Environment Institute (SEI):** An international environmental NGO with offices in seven countries, www.sei.se
- **UNITAR:** The UN Institute for Training and Research supports training in international affairs management and capacity building in economic and social development, including climate change, www.unitar.org
- **University of Cape Town (UCT):** A world class university working on all aspects of climate change, www.csag.uct.ac.za and www.erc.uct.ac.za
- **Barotseland.com:** Provides access to knowledge and information about Western Zambia and is actively involved in sustainable development projects, part of the Zambezi Valley Development Initiative (ZVDI) project, www.barotseland.com and www.zvdi.org