

## MAINSTREAMING CLIMATE CHANGE ADAPTATION INTO POVERTY ERADICATION PROCESSES. Tanzania's experience

**Richard Muyungi,**  
Assistant Director of Environment,  
Vice President's Office

Presented at a Workshop on  
Adaptation Planning and Practices  
under the Nairobi Framework,

Rome, Italy, September, 207

### Issues to consider



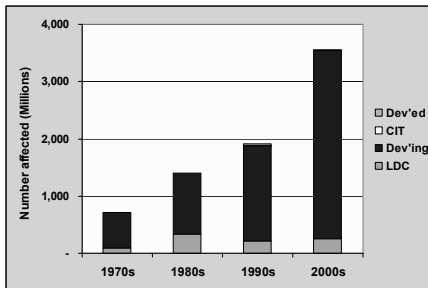
- Climate change – how does it impact upon poverty eradication efforts and Planning processes
- Making mainstreaming an effective approach to Climate Change adaptation
- Tanzania's approach and experience on mainstreaming climate change adaptation into planning and poverty eradication process
- Conclusion: Is Mainstreaming enough to address Climate Change impacts

### Why Climate Change is a Serious Development Issue

All countries are vulnerable to climate change but the poorest countries and the poorest people within them are most vulnerable. They are the most exposed and have the least means to adapt.

In this decade over 3 billion people in developing countries are likely to be affected by climate related disasters

People in developing countries are affected at 20 times the rate of those in developed countries



Source: World Bank analysis based on CREDA data.

### Poor countries face the greatest threats from climate change

- Many African countries and LDCs are in areas greatly affected by climate change- Basins prone to floods, arid and semi arid areas, low lying Islands etc.
- The poorest populations are often particularly exposed
- Many developing countries are highly dependent on climate sensitive sectors, e.g., for Tanzania's GDP agriculture (over 50%), tourism over 10%), fisheries and forestry (about 10%).
- Many developing countries lack the physical, financial and human resources to institute adaptive measures.

### Making Mainstreaming an effective approach to Climate Change adaptation

- All countries do recognize that Adaptation to climate change is part of the development process and not separated from it – thus need to be integrated into national economic planning and poverty eradication Strategies
- Existing capacities (and weaknesses) form the starting point for mainstreaming adaptation actions for each country
- The process of mainstreaming/integration should focus on national needs and priorities for Sustainable development. Must be premised in the national development vision

### Making mainstreaming effective

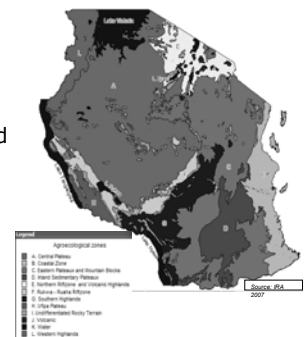
- Build capacity/ resilience into livelihoods to cope with the risks and vulnerabilities due to climate change .
- Coping and resilience are associated with levels of development and comprehensive plans– effective functioning economic plans; sound natural resource management; good infrastructure and functional institutional set up for environmental governance do facilitate coping and mainstreaming.
- Adaptation must be taken within the broader development processes.

### Tanzania’s Experience: Creating ground for mainstreaming

- Conceptualizing climate change mainstreaming within the poverty eradication framework- awareness at all lvls through e.g. EWG
- Providing the institutional and legal framework as well as tools for mainstreaming
- Prior to this it requires:
  - Vulnerability and Adaptation needs assessment
  - Capacity building Strategy/programme
  - Creation of Monitoring capacity
  - Creation of awareness at the highest political level

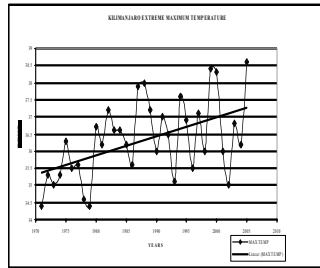
### Tanzania’s Experience: Steps undertaken-V&A

- Mapping of the ecological potential and vulnerability to climate change
- Analysis of the 30yrs climate change related data and information
- Linking Climate change to sector specific production/impact trend



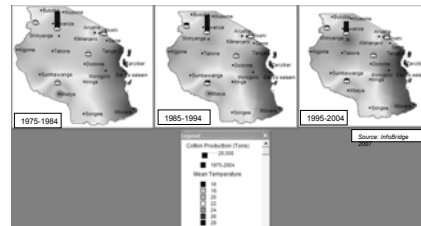
## Tanzania's Experience: Steps undertaken-Mapping the impacts

- Measurements from 21 MET stations have shown a steady increase in temp. of 0.2 °C for the past 30 years throughout the country and a clear decrease in rainfall. Southern highlands on the extreme end- for about 0.6 °C



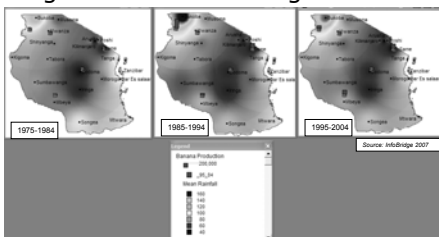
## Temperature rise impacts on Key crops: Cotton and Banana

- Reliability and availability of data notwithstanding, cotton production dropped significantly particularly in traditional areas

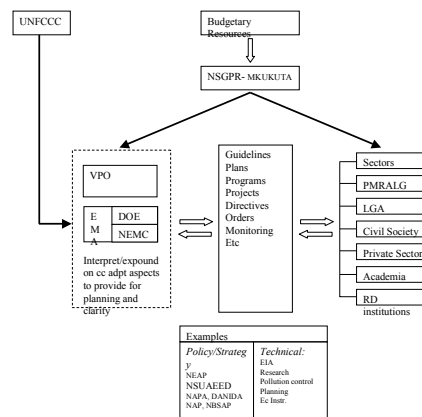


## Banana production is also dropping

- In areas around lake Victoria Basin which is the same Banana growing agro ecological zones within Uganda



## Conceptual Framework for Mainstreaming CC Adaptation in Poverty Eradication Process in Tanzania



## Steps towards mainstreaming: PEI

- Public awareness and Education
  - About the environment and the implications of climate change
  - Highlighting the identified impacts, opportunities, incentives and benefits from mainstreaming cc in the planning and budgeting at all levels.
  - Mainstreaming Programme phase II, 2007- Focus on Guidelines, and micro grant, EMA –ISP,2007
- Empowerment and Capacity Building
  - Local governments through Decentralization and devolution of powers on environmental management
  - Environmental committees in place by EMA,2004
- Involvement and participatory Planning
  - Participatory planning- emphasizing involvement of the public in identifying climate change concerns and natural resource issues and in integrating them into their local plans and budgets, including at local government level.

## Specific Steps

- EMA,2004 – Providing a Legal and Institutional Framework
- National Environmental working group (**EWG**), 2005- Recognizing the cross-sectoral nature of environment at central government level as per EMA,2004
  - Chair, DE, VPO: Members from all key sectors, NGOs, Donor Community, Research and academic institutions. Offshoot of the NEAC by EMA,2004. Sectors represented by Env. Sector Coordinators as per EMA,2004
  - Meets once a month on various issues including mainstreaming programmes, budget support, EMA Implementation support activities and mainstreaming approaches/guidelines

## Specific steps

- National **Strategy on urgent actions** on impacts of Ext. weather events – drought/env. Degradation,2006
  - Cabinet Committee to spearhead implementation- **Chair VP**, Members- Ministers responsible for Lands, Livestock, Agriculture, Natural Resources, Trade and Industries, Water, Community development, PM-Local Government, Treasury, Planning, Home Affairs, National Security, Education, Defense and National service, Higher Education and Infrastructure

## Specific Steps-NSUA EED

- Needs USD 30 million (1<sup>st</sup> 5years) - National budgetary allocation- USD9.4 million, 2006/2007 same 2007/2008
- Funding directly mainstreamed within the MTEF/annual budgets of the key sectors
- Focal officer within Sector Ministries and local government, VPO and a Cabinet Undersecretary to monitor implementation regularly and report on quarterly basis.

## EMA, ISP (USD 40m), 2007 and Mainstreaming Programme, 2007 Phase II (USD 3m)

- Both broadly aim at among others enhancing CC adaptation mainstreaming through:
  - Increasing collaboration among departments at the centre and between departments and the local government.
  - Strengthening the capacity in environmental management including the training of sector environmental coordinators as per EMA2004,
  - Developing a national capacity to:
    - Continue mainstreaming and enhance understanding climate change and its impacts ;
    - formulate environmental regulations necessary for CC adaptation and mainstreaming as per EMA,2004;
    - Formulate and execute appropriate interventions related to adaptation;
    - collect and analyze climate change related data; and
    - monitor and evaluate mainstreaming interventions .

## Lessons Learnt: Conclusion

- Mainstreaming is a continuous process important for the national development agenda. It is also a costly undertaking
- Clear guidelines for mainstreaming CC adaptation into national poverty eradication, budgetary allocation and planning frameworks must be premised within a given legal and institutional framework at a national and local level.

## Conclusion

- Mainstreaming increases the adaptive capacity of the long terms impacts of climate change, but short term adaptive capacity needs will need urgent actions and readily available resources
- International support to address climate change including support for mainstreaming will remain a necessity.
- A needs to put in place mechanisms, functional institutions and strategies for such assistance, e.g. the NSUAEED and NAPA.
- There should always be clear guidance for mainstreaming and continuous PEI. A clear legal and institutional framework is also a pre requisite.

## Conclusion

- Enhancement of the capacity of policy makers at the highest level to design and implement measures for sustainable development (such as NSUAEED) and scale-up CC adaptation interventions is important for poverty eradication.
- Mechanisms for Monitoring financial resources allocated for implementation of mainstreaming related activities and Adaptation interventions at both central and local government levels is extremely important.
- Public Awareness and education Empowerment and Capacity Building and Involvement and participatory planning (PEI) are a necessary and continuous process for mainstreaming CC adaptation.

## Conclusion

- Extreme and immediate impacts of CC can not be addressed by mainstreaming. Such adaptation needs can only be addressed by enhanced international support through the UNFCCC process and other global initiatives.
- It is important to link short term adaptive activities and long term interventions to deal with climate change through mainstreaming in poverty eradication processes and development planning at all levels. Immediate NAPA Implementation should be undertaken from this context