

Experiences from Bhutan on Early Warning Systems

Bhutan National Adaptation Programme of Action (NAPA)

August 20, 2013

Siem Reap, Cambodia



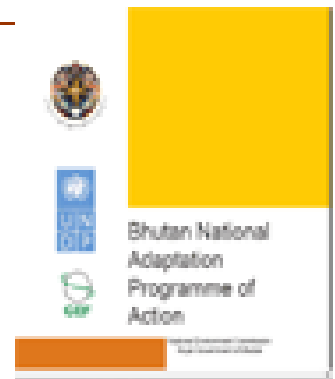
Sonam Lhaden Khandu
Climate Change Division
National Environment Commission
Royal Government of Bhutan



Bhutan's NAPA 2006

- Document prepared by NECS 2004-2006
- 9 Priority Projects

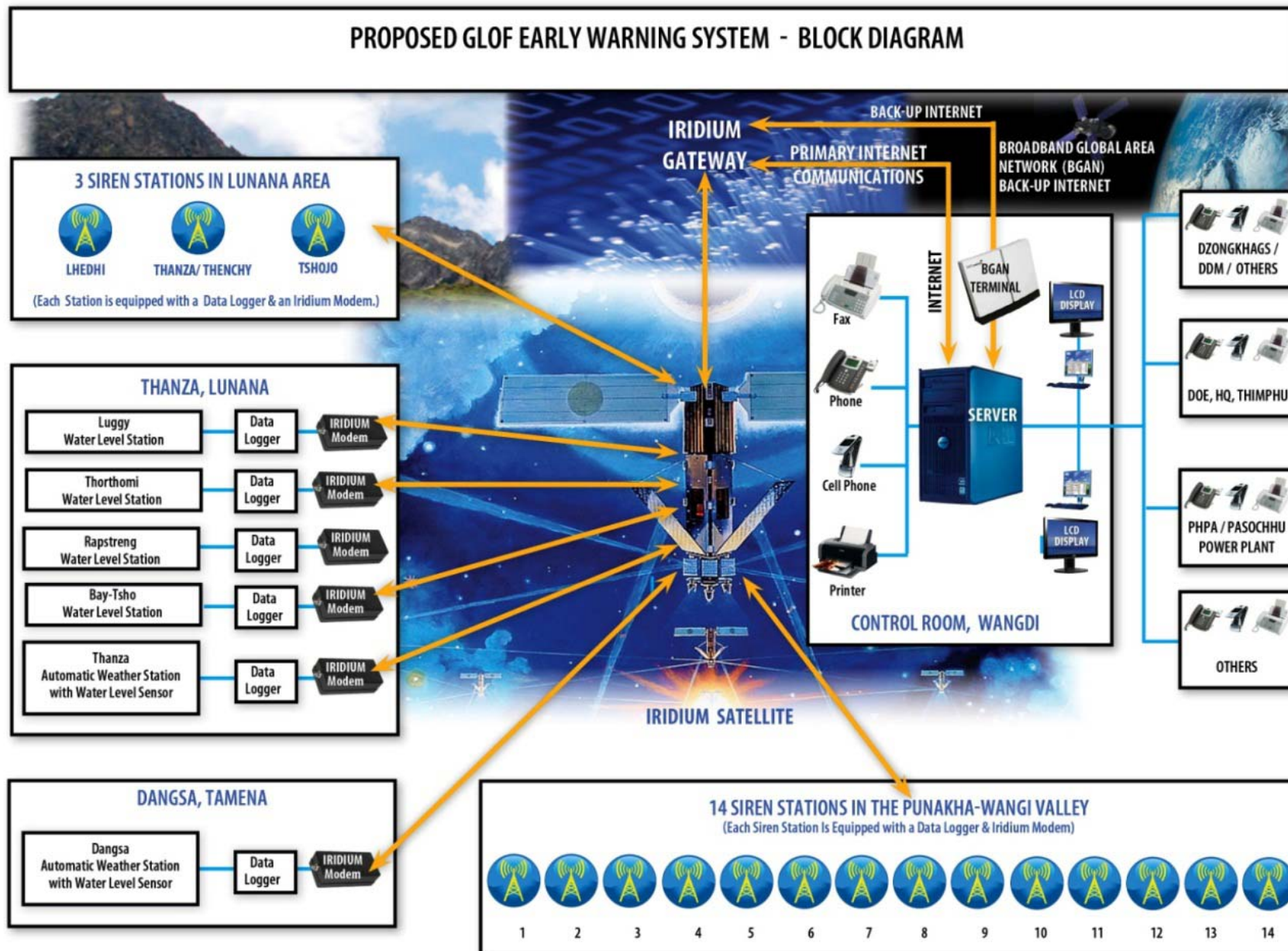
*Reducing Climate Change-induced Risks and Vulnerabilities
from Glacial Lake Outburst Floods
in the Punakha-Wangdi and Chamkhar Valleys*



Three Components

1. Artificial lowering of water level in Thorthormi Lake
 2. Increase capacity for disaster risk management in affected valleys
 3. Installing Technical Early Warning System for glacial lake outburst floods
- Funded by LDCF, RGOB, UNDP, Austrian Development Agency and the WWF-Bhutan (USD 8.273 million)
 - Project period: 5 yrs (commencing 2008)

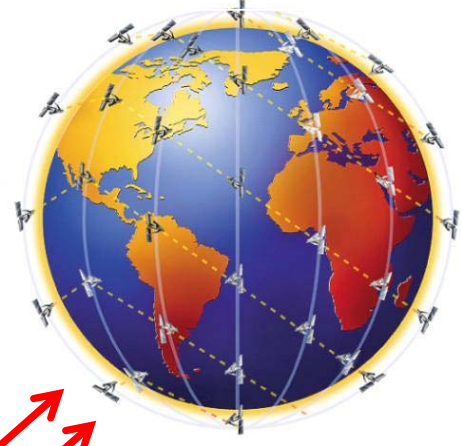
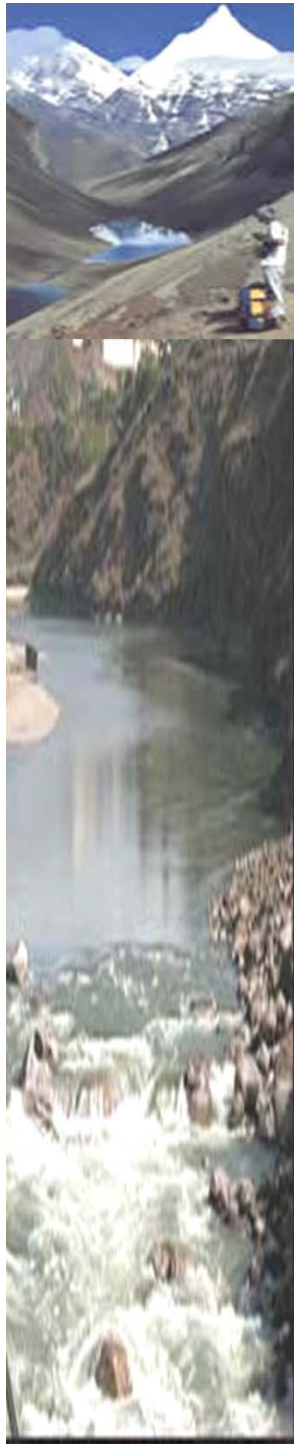
Punakha-Wangdi GLOF EWS, Bhutan



Components of GLOF EWS

Remote Monitoring Stations

Communication



Sirens

Control Room

Project funded by:



PHPA-I and PHPA-II

Austrian
Development Cooperation



NAPA II-PPG: Addressing the risk of climate-induced disasters through enhanced national and local capacity for effective actions

1. Risk reduction from climate-induced floods and landslides
2. Enhanced adaptive capacity at community level
- 3. Enhanced national capacity for managing climate risks**

3.1 Enhanced quality, availability, and transfer of real time climate data in all Dzongkhags

3.2 Increased effectiveness of National Weather Forecasting and Flood Warning Center (NWFFWC)



NAPA II: Component 3

Automatic Weather Stations (AWS)

- 34 existing “Class C” Manual stations will be up graded to AWS (with real-time data transfer capability);
- 26 new AWS will be installed at new locations (with real-time data transfer capability);
- 11 snow gauge measurement facilities will be added to AWS on selected locations.

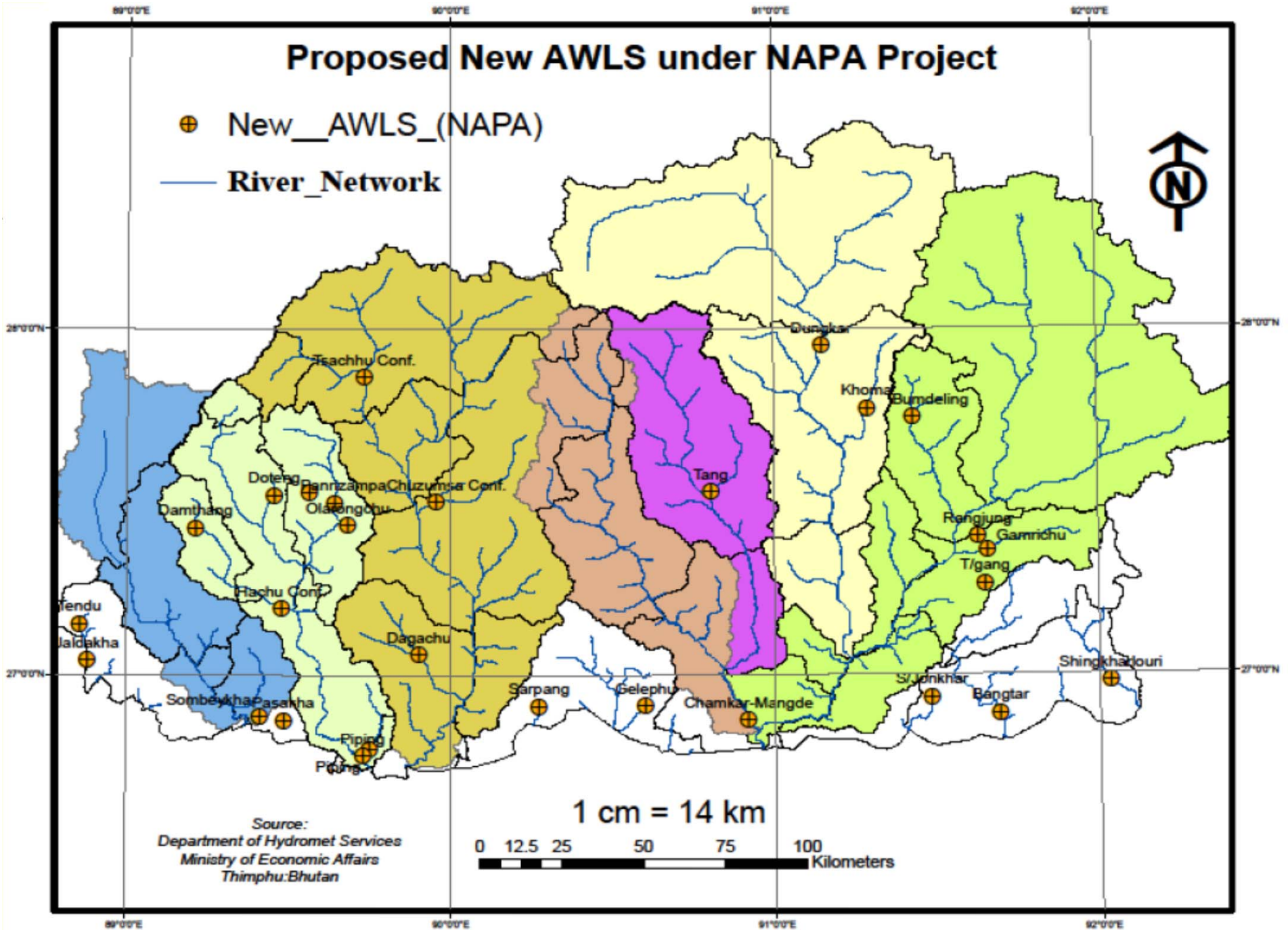
Automatic Water Level Monitoring Stations (AWLS)

- 11 existing manual water level monitoring stations (AWLS) will be up-graded to automatic AWLS;
- 28 automatic water level monitoring stations (AWLS) will be installed on selected locations;
- On six sites in critical sub-basin outlets a cable system for discharge measurement will be incorporated within the AWLS, to help flood forecasting and modeling works;

Proposed New AWLS under NAPA Project

⊕ New_AWLS_(NAPA)

— River_Network



Source:
Department of Hydromet Services
Ministry of Economic Affairs
Thimphu, Bhutan

1 cm = 14 km
0 12.5 25 50 75 100
Kilometers



Thank you